

FLOORING STANDARDS

# Even Hotels 2.0

ACCOUNT MANAGER

**Kari Lewis**

kari.lewis@shawcontract.com

770.468.6237

CUSTOMER SERVICE

**Courtnei Cartwright**

shaw.ihg@shawinc.com

706.217.3454

VP STRATEGIC ACCOUNTS

**Desiree Perkins**

desiree.perkins@shawcontract.com

404.452.3055



**ShawContract**<sup>®</sup>  
hospitality



## Our Sustainability Story

Everyone should have access to sustainable products for the places where we heal, learn, rest and work. Our brand vision, Smarter Impact, is our call to action to share insights and solutions that help you act on your power for positive change, especially when it comes to making sustainable choices.

Our view of sustainability encompasses not only the environmental health of our products and our operations, but also how our products impact human experience. For more than 20 years, Shaw Contract Hospitality has demonstrated our commitment to the Cradle to Cradle® design philosophy and the Cradle to Cradle Certified™ Products Program. More than 90% of the products we manufacture have achieved this prestigious multi-attribute certification, protecting humans and the environment.



Declare.

EPD®



## Attributes

- Guest comfort and experience
- High-traffic durability
- Housekeeping support and cleanliness
- Improved acoustics
- Reduced renovation downtime
- Welcoming, customized design

## Why Shaw Contract Hospitality?

- By selecting materials that are sustainably sourced, long-lasting and free of harmful chemicals, hotels can assure guests that their values matter. Shaw Contract Hospitality offers a portfolio of products that satisfy the most stringent sustainability certifications.
- An entire team dedicated to customizing your hospitality project, including design services, visualization, estimating, and install seaming diagrams
- Single point of contact for order entry/monitoring, shipment tracking and expediting, technical services, risk mitigation and problem resolution
- Tailored stocking program based on your forecasting to ensure availability of your standard products and rapid service/reduced lead times

## Product Breadth

- Area Rugs
- Broadloom
- Carpet Tile
- Hardwood
- LVT
- Sheet
- Bio-based Resilient
- COREtec® Resilient
- Accessories





## LVT at Guestroom | EVG-LVT01

Style	BS736
Color	56506
Construction	Commercial Luxury Vinyl Tile with Acoustic Backing
Wear Layer Thickness	20 mil   0.02 in   0.51 mm
Overall Thickness	0.197 in   5.0 mm
Nominal Dimensions	6 in x 48 in   15 cm x 122 cm
Actual Dimensions	6 in x 48 in   15.24 cm x 121.92 cm
Installation	Direct Glue
Approved Install Method	Stagger
Area Per Box	20 sq ft   10 pcs
Warranty	15 Year Commercial Limited

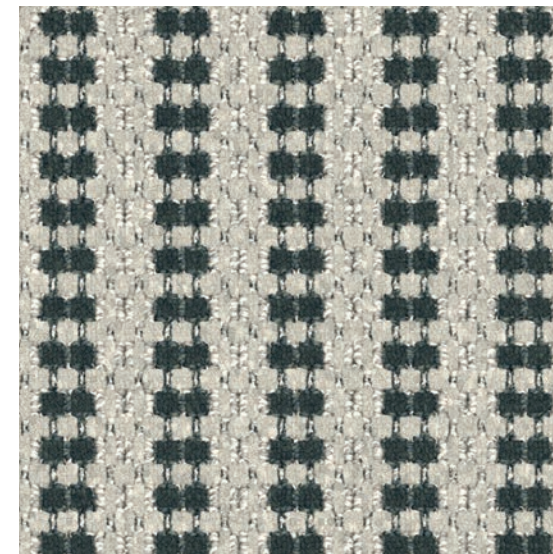


For sample, order BS736 color 56506.



## Carpet at Guestroom | EVG-CPT01

Style	BS696
Color	D6066
Product Type	Broadloom
Fiber	Eco Solution Q® Nylon
Dye Method	100% Solution Dyed
Construction	Multituft Full Repeat Tip Shear
Tufted Weight	32 oz/yd <sup>2</sup>   1085.01 g/m <sup>2</sup>
Gauge	1/10 in   39.37 per 10 cm
Stitches	11.17 per in   43.98 per 10 cm
Size	12 ft   3.66 m
Pattern Repeat	24 in x 6 in   60.96 cm x 15.24 cm
Backing	Classicbac®
Installation*	Direct Glue
Warranty	10 Year Commercial Limited



For sample, order BS696 color D6066.

\*Use LokSeam for transitionless LVT to broadloom applications.  
\*Fiber Select 132FS carpet cushion required when using LokSeam.



### Corridor Carpet | EVP-CPT01

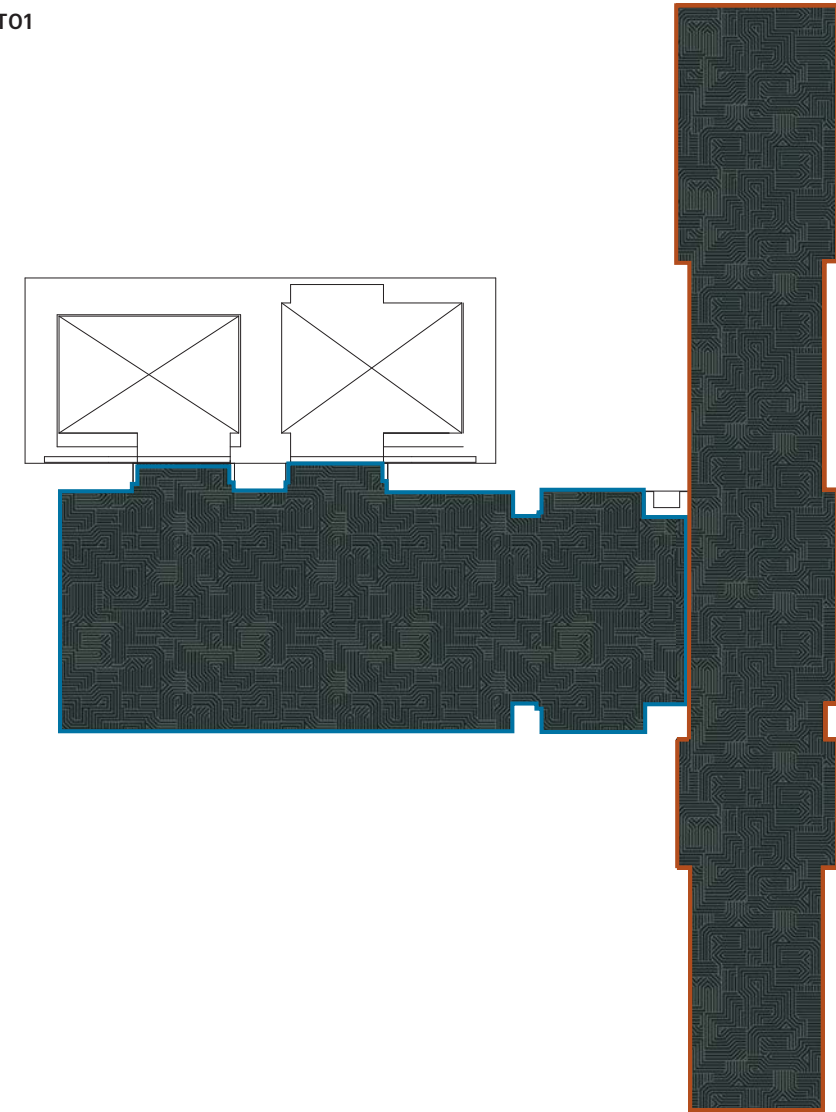
<b>Style</b>	BS697
<b>Color</b>	D5761
<b>Product Type</b>	Broadloom
<b>Fiber</b>	Eco Solution Q® Nylon
<b>Dye Method</b>	100% Solution Dyed
<b>Construction</b>	Multituft Full Repeat Tip Shear
<b>Tufted Weight</b>	36 oz/yd²   1220.64 g/m²
<b>Gauge</b>	1/10 in   39.37 per 10 cm
<b>Stitches</b>	12.33 per in   48.54 per 10 cm
<b>Size</b>	12 ft   3.66 m
<b>Pattern Repeat</b>	72 in x 72 in   182.88 cm x 182.88 cm
<b>Backing</b>	Classicbac®
<b>Installation*</b>	Direct Glue
<b>Warranty</b>	10 Year Commercial Limited



For sample, order BS697 color D5761.

\*Must use DoubleStick 134FS.

### Corridor Carpet | EVP-CPT01



- Elevator Lobby
- Corridor

### Corridor Fill Carpet | EVP-CPT02

<b>Style</b>	BS744
<b>Color</b>	E4209
<b>Product Type</b>	Broadloom
<b>Fiber</b>	Eco Solution Q® Nylon
<b>Dye Method</b>	100% Solution Dyed
<b>Construction</b>	Cut Pile
<b>Tufted Weight</b>	36 oz/yd²   1220.64 g/m²
<b>Gauge</b>	1/10 in   39.37 per 10 cm
<b>Stitches</b>	11 per in   43.31 per 10 cm
<b>Size</b>	12 ft   3.66 m
<b>Backing</b>	Classicbac®
<b>Installation</b>	Direct Glue
<b>Warranty</b>	10 Year Commercial Limited





**Inset Carpet at Lobby Lounge & Restaurant | EVP-CPT03**

Style	BS738
Color	D7843
Product Type	Broadloom
Fiber	Eco Solution Q® Nylon
Dye Method	100% Solution Dyed
Construction	Multi-Level Loop Tip Shear
Tufted Weight	36 oz/yd²   1220.64 g/m²
Gauge	1/10 in   39.37 per 10 cm
Stitches	10 per in   39.37 per 10 cm
Size	12 ft   3.66 m
Pattern Repeat	72 in x 70.4 in   182.88 cm x 178.82 cm
Backing	ClassicBac®
Installation	Direct Glue
Warranty	10 Year Commercial Limited

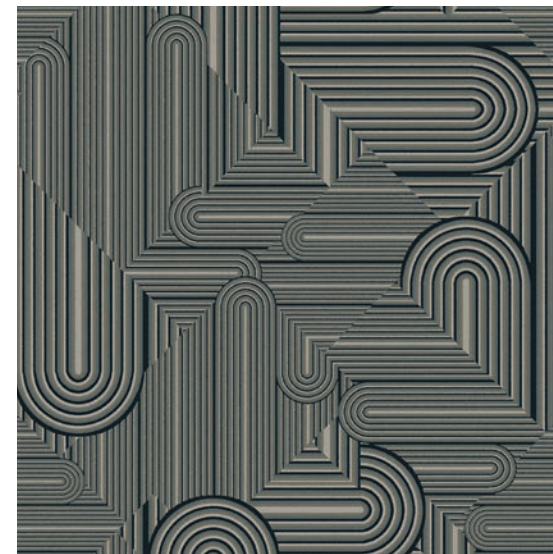


For sample, order BS738 color D7843.



**Carpet at Mezzanine | EVP-CPT04**

Style	BS742
Color	E3447
Product Type	Broadloom
Fiber	Eco Solution Q® Nylon
Dye Method	100% Solution Dyed
Construction	Multi-Level Loop Tip Shear
Tufted Weight	36 oz/yd²   1220.64 g/m²
Gauge	1/10 in   39.37 per 10 cm
Stitches	10 per in   39.37 per 10 cm
Size	12 ft   3.66 m
Pattern Repeat	144 in x 144 in   365.76 cm x 365.76 cm
Backing	Ultraloc®
Installation	Direct Glue
Warranty	Lifetime Commercial Limited

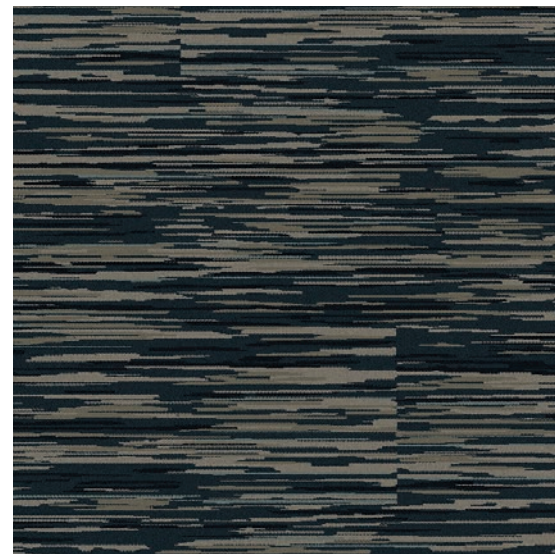


For sample, order BS742 color E3447.



## Carpet at Meeting Room | EVP-CPT05

Style	BS743
Color	E3446
Product Type	Broadloom
Fiber	Eco Solution Q® Nylon
Dye Method	100% Solution Dyed
Construction	Multi-Level Loop Tip Shear
Tufted Weight	36 oz/yd²   1220.64 g/m²
Gauge	1/10 in   39.37 per 10 cm
Stitches	10 per in   39.37 per 10 cm
Size	12 ft   3.66 m
Pattern Repeat	72 in x 95.4 in   182.88 cm x 242.32 cm
Backing	Ultraloc®
Installation	Direct Glue
Warranty	Lifetime Commercial Limited

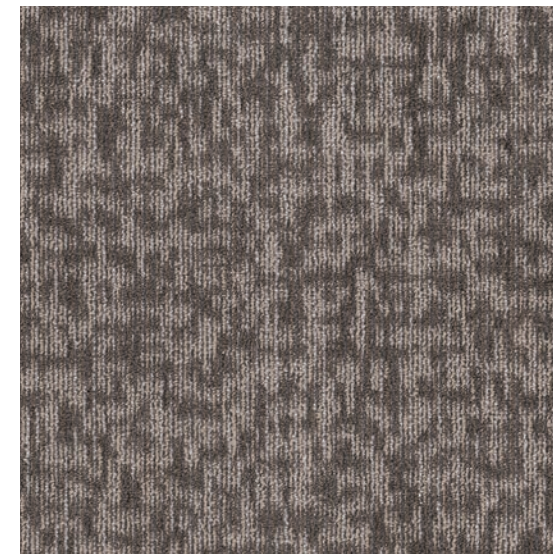


For sample, order BS743 color E3446.



## Carpet at Back of House | EVP-CPT06 Carpet at Stairs | EVP-CPT07

Style	BS735
Color	94515
Product Type	Broadloom
Fiber	Eco Solution Q® Nylon
Dye Method	100% Solution Dyed
Construction	Multi-Level Pattern Loop
Tufted Weight	16 oz/yd²   542.5 g/m²
Gauge	1/10 in   39.37 per 10 cm
Stitches	9.5 per in   38.0 per 10 cm
Size	12 ft   3.66 m
Pattern Repeat	24 in x 24 in   60.96 cm x 60.96 cm
Backing	Classicbac®
Installation	Direct Glue
Warranty	10 Year Commercial Limited



For sample, order BS735 color 94515.

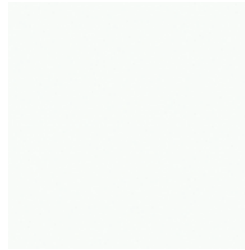
## Additional Product Options

---

### Guestroom Wall Base | EVG-B01

---

Style	BS746
Color Number	00067
Product Type	Wall Base 4.5" Angle
Construction	Thermoplastic Rubber
Actual Dimensions	96 in length x 4.5 in width
Linear ft per roll   Pieces per roll	48   6
Warranty	5 Year Commercial Limited



For sample, order BS746 color 00067.

### Guestroom Wall Base | EVG-B01

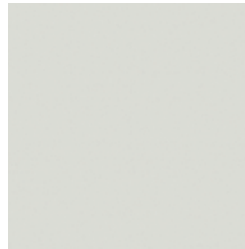
#### Wall Base at Athletic Studio | EVP-B03

#### Public Space Wall Base | EVP-B01

#### Stairwells Wall Base | EVP-B07

---

Style	BS750
Color Number	00032
Product Type	Wall Base 4.5" Angle
Construction	Thermoplastic Rubber
Actual Dimensions	96 in length x 4.5 in width
Linear ft per roll   Pieces per roll	48   6
Warranty	5 Year Commercial Limited



For sample, order BS750 color 00032.

### Corridor Wall Base | EVP-B06

---

Style	BS749
Color Number	00066
Product Type	Wall Base 4.5" Angle
Construction	Thermoplastic Rubber
Actual Dimensions	96 in length x 4.5 in width
Linear ft per roll   Pieces per roll	48   6
Warranty	5 Year Commercial Limited



For sample, order BS749 color 00066.

## Additional Product Options

---

### Guestroom Cushion

---

Style	132FS
Description	Fiber Select
Weight	32 oz   1,085 g/m <sup>2</sup>
Thickness	0.312 in   7.92 mm
Density	8.5 lb/ft <sup>3</sup>   136 kg/m <sup>3</sup>
Square yards per roll	40

### Corridor Cushion

---

Style	134FS
Description	DoubleStick
Weight	34 oz   1,153 g/m <sup>2</sup>
Thickness	0.3125 in   7.94 mm
Density	8.5 lb/ft <sup>3</sup>   136 kg/m <sup>3</sup>
Square yards per roll	40





