

FLOORING STANDARDS

LivSmart Studios

By Hilton

ACCOUNT MANAGER

David Burn

dburn1@mac.com

301.520.9360

CUSTOMER SERVICE

Courtney Angwin

courtney.angwin@shawinc.com

706.217.3474

VP STRATEGIC ACCOUNTS

Desiree Perkins

desiree.perkins@shawcontract.com

404.452.3055



ShawContract®
hospitality

Why Shaw Contract Hospitality?

- An entire team dedicated to customizing your hospitality project, including:
 - Design services
 - Visualization
 - Estimating
 - Install seaming diagrams
- Single point of contact for:
 - Order entry/monitoring
 - Shipment tracking/expediting
 - Technical services
 - Risk mitigation
 - Problem resolution
- Tailored stocking program to ensure:
 - Availability of your standard products
 - Rapid service/reduced lead times
- A portfolio of products that satisfy the most stringent sustainability certifications

Our Sustainability Story

At the heart of Shaw Contract we design products and solutions that positively impact people and the planet. Our brand vision, People Together Planet Forever, is our call to action to share insights and solutions that help you act on your power for positive change, especially when it comes to making sustainable choices.

Our view of sustainability encompasses not only the environmental health of our products and our operations, but also how our products impact human experience. By selecting materials that are sustainably sourced, long-lasting and free of harmful chemicals, hotels can assure guests that their values matter.

For more than 20 years, Shaw Contract Hospitality has demonstrated our commitment to the Cradle to Cradle® design philosophy and the Cradle to Cradle Certified™ Products Program. More than 90% of the products we manufacture have achieved this prestigious multi-attribute certification, protecting humans and the environment.



Learn More

Certifications





Overall Luxury Vinyl Tile @
Guestroom (Matcha Scheme) | RF-01

Style	BS931
Color	63703
Construction	Multilayer SPC with Acoustic Backing
Wear Layer Thickness	20 mil 0.02 in 0.51 mm
Overall Thickness	0.217 in 5.5 mm
Nominal Dimensions	7 in x 48 in 18 cm x 122 cm
Actual Dimensions	6.92 in x 48.03 in 17.58 cm x 122 cm
Installation	Floating or Direct Glue
Approved Install Method	Ashlar*, Stagger
Area Per Box	23.11 sq ft 10 pcs
Warranty	20 Year Commercial Limited

*Shown in Ashlar



For sample, order BS931 color 63703.



Overall Luxury Vinyl Tile @
Guestroom (Merlot Scheme) | RF-01

Style	BS930
Color	02720
Construction	Multilayer SPC with Acoustic Backing
Wear Layer Thickness	20 mil 0.02 in 0.51 mm
Overall Thickness	0.217 in 5.5 mm
Nominal Dimensions	7 in x 48 in 18 cm x 122 cm
Actual Dimensions	6.92 in x 48.03 in 17.58 cm x 122 cm
Installation	Floating or Direct Glue
Approved Install Method	Ashlar*, Stagger
Area Per Box	23.11 sq ft 10 pcs
Warranty	20 Year Commercial Limited

*Shown in Ashlar



For sample, order BS930 color 02720.



Overall Carpet Tile @ Guest Corridor & BOH Areas | C-10

Style	BS812
Color	50506
Product Type	Carpet Tile
Fiber	Eco Solution Q100™ Nylon
Dye Method	100% Solution Dyed
Construction	Multi-Level Pattern Loop
Tufted Weight	17 oz/yd² 576.4 g/m²
Gauge	1/12 in 47.2 per 10 cm
Stitches	8.5 per in 34.5 per 10 cm
Size	9 in x 36 in 23 cm x 91 cm
Backing	Ecologix® Tile
Installation	Direct Glue
Approved Install Method	Ashlar
Warranty	Lifetime Commercial Limited

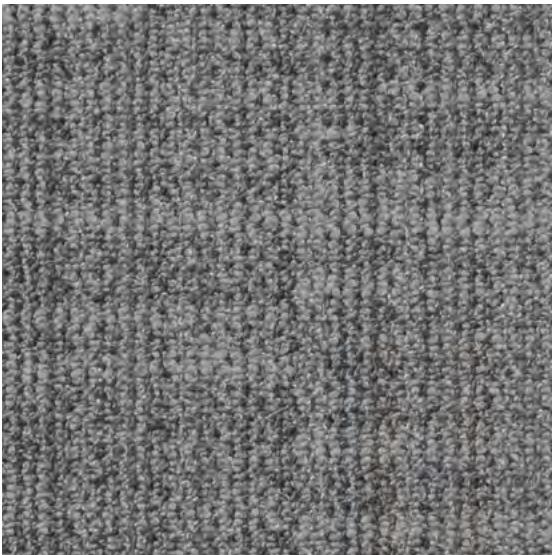


For sample, order BS812 color 50506.



Accent Carpet Tile (1) @ Guest Corridor | C-11

Style	BS813
Color	50580
Product Type	Carpet Tile
Fiber	Eco Solution Q100™ Nylon
Dye Method	100% Solution Dyed
Construction	Multi-Level Pattern Loop
Tufted Weight	17 oz/yd² 576.4 g/m²
Gauge	1/12 in 47.2 per 10 cm
Stitches	8.5 per in 34.5 per 10 cm
Size	9 in x 36 in 23 cm x 91 cm
Backing	Ecologix® Tile
Installation	Direct Glue
Approved Install Method	Ashlar
Warranty	Lifetime Commercial Limited



For sample, order BS813 color 50580.



Accent Carpet Tile (2) @ Guest Corridor | C-12

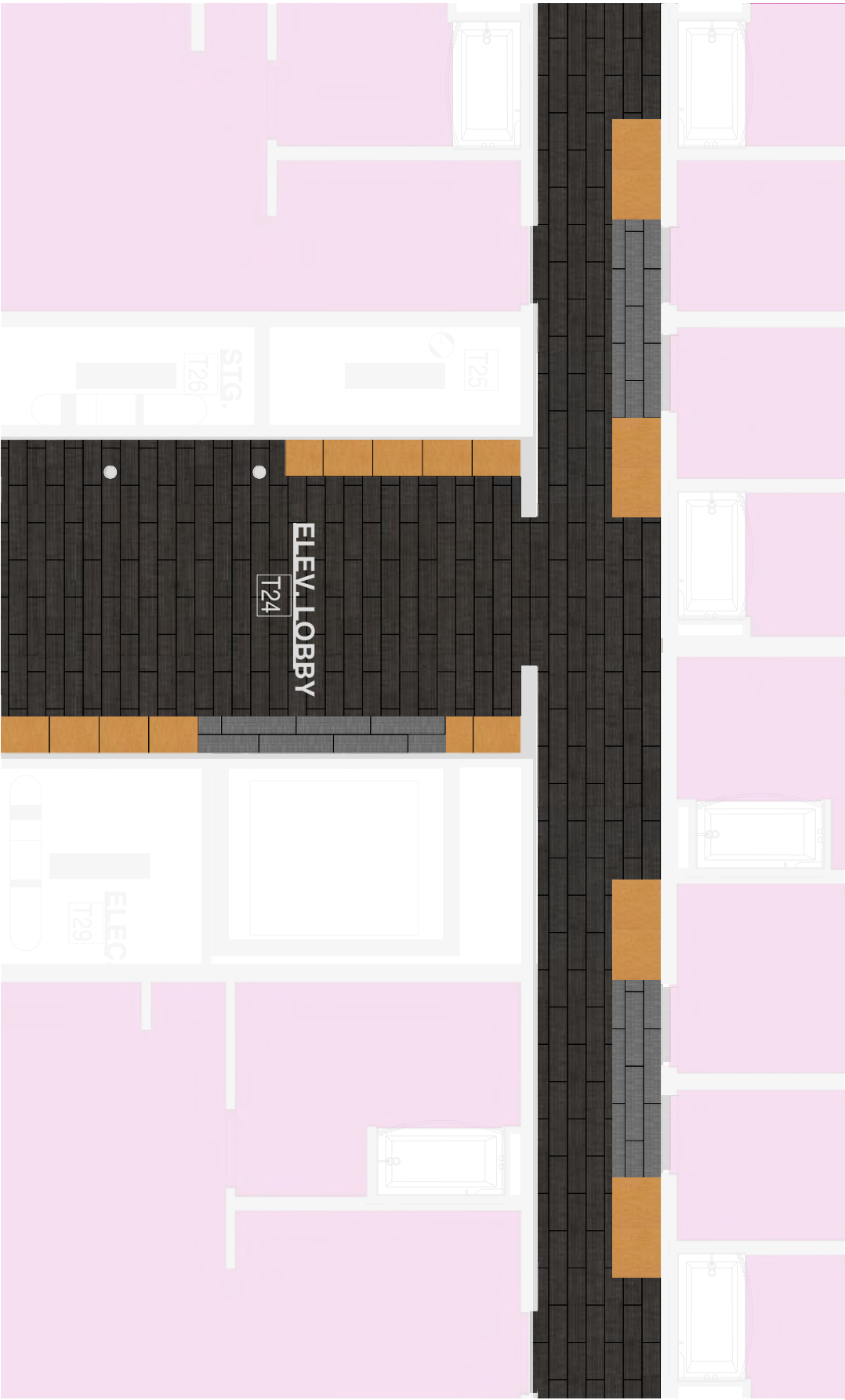
Style	BS814
Color	81675
Product Type	Carpet Tile
Fiber	Eco Solution Q100™ Nylon
Dye Method	100% Solution Dyed
Construction	Multi-Level Pattern Loop
Tufted Weight	18 oz/yd² 610.3 g/m²
Gauge	1/12 in 47.2 per 10 cm
Stitches	10.5 per in 41.0 per 10 cm
Size	24 in x 24 in 61 cm x 61 cm
Backing	Ecologix® Tile
Installation	Direct Glue
Approved Install Method	Monolithic
Warranty	Lifetime Commercial Limited



For sample, order BS814 color 81675.

Corridor | C-10, C-11 & C-12

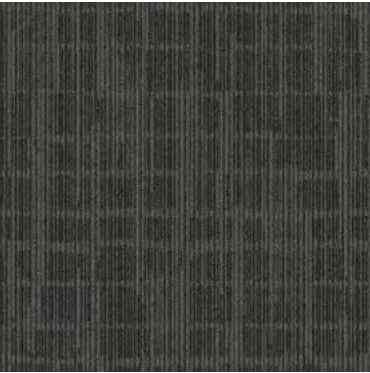
- Overall Carpet Tile
- Accent Carpet Tile 1
- Accent Carpet Tile 2



Additional Product Options

Broadloom Carpet @ Stairwells | C-13

Style	BS815
Color	H5507
Product Type	Broadloom
Fiber	Eco Solution Q® Nylon
Dye Method	44% Solution Dyed / 56% Yarn Dyed
Construction	Multi-Level Pattern Cut/Loop
Tufted Weight	32 oz/yd² 1085 g/m²
Gauge	1/12 in 47.2 per 10 cm
Stitches	8.67 per in 34.13 per 10 cm
Size	12 ft 3.66 m
Pattern Repeat	72 in x 48 in 1.83 m x 1.22 m
Backing	Ultraloc®
Installation	Direct Glue
Warranty	Lifetime Commercial Limited



For sample, order BS815 color H5507.

Carpet Base @ Guest Corridors | B-10

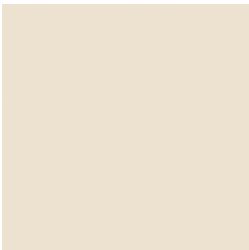
Style	BS942
Color Number	32583
Product Type	Carpet Base
Size	4 in
Warranty	5 Year Commercial Limited



For sample, order BS942 color 32583.

Resilient Base @ Guestroom & Bath | B-01

Style	BS932
Color Number	00074
Product Type	4.5” Detail Wall Base
Construction	Thermoplastic Rubber (TPR)
Actual Dimensions	96 in length x 4.5 in width
Linear ft per roll Pieces per roll	48 6
Warranty	5 Year Commercial Limited



For sample, order BS932 color 00074.

Resilient Base @ Guest Corridors | B-10 ALT

Style	BS933
Color Number	00033
Product Type	4.5” Detail Wall Base
Construction	Thermoplastic Rubber (TPR)
Actual Dimensions	96 in length x 4.5 in width
Linear ft per roll Pieces per roll	48 6
Warranty	5 Year Commercial Limited



For sample, order BS933 color 00033.

Additional Product Options

Resilient Base @ Public Areas & BOH | B-11

Style	BS934
Color Number	00035
Product Type	4.5” Detail Wall Base
Construction	Thermoplastic Rubber (TPR)
Actual Dimensions	96 in length x 4.5 in width
Linear ft per roll Pieces per roll	48 6
Warranty	5 Year Commercial Limited



For sample, order BS934 color 00035.

Broadloom Adhesive

Style	H1000
Description	LokWorx+ Broadloom Adhesive 4 gal
Spread Rate	75-100 sy per gal

Carpet Tile Adhesive

Style	N5000
Description	LokWorx+ Carpet Tile Adhesive 4 gal
Spread Rate	250-300 sy per gal

LVT Adhesive

Style	164CA
Description	LokWorx+ Resilient Tile Adhesive 4 gal
Spread Rate	175-225 sf per gal

Seam Sealer

Style	H4000
Description	Shaw 4000 1 qt
Spread Rate	550-600 lf per qt

Cove Base Adhesive

Style	166VS	141VS
Description	1 gal pail	12 30oz tubes per box
Spread Rate	240 lf per gallon	55-60 lf per tube

