

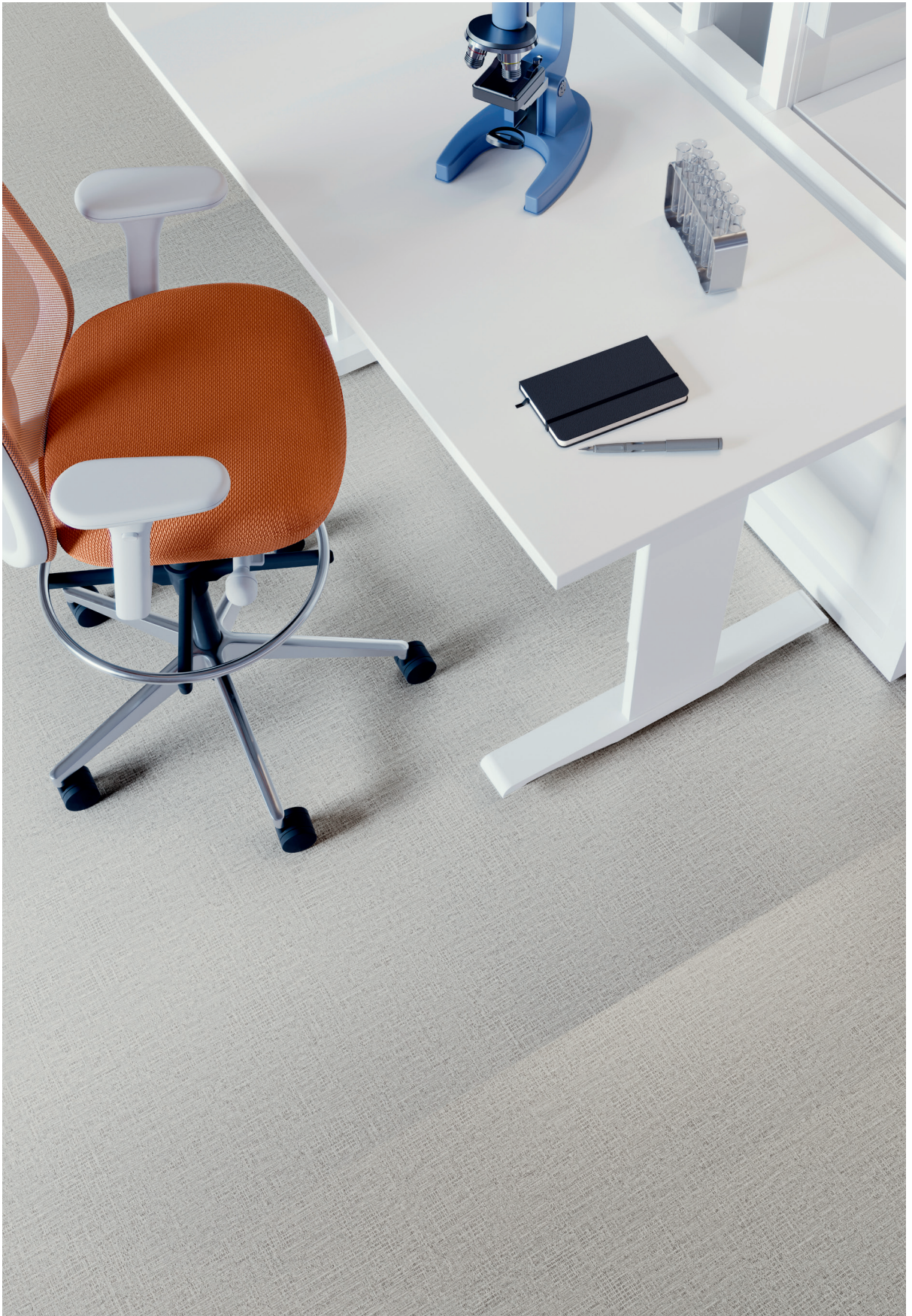
What if flooring  
could support  
the scientific  
innovation of  
tomorrow?

# Introduction

In Life Science, flooring provides support and performance for a wide range of specialized environments. Well-designed spaces provide flexibility, collaboration, and employee wellness. Shaw Contract serves the segment as a committed partner, with unrivaled expertise and a dedicated portfolio of sustainable, solution-driven product options.

We seek to continually advance our understanding of all that contributes to outcome-driven spaces, from product innovation and acoustics to installation and maintenance. We develop products that have a positive impact on the environment as well as the comfort and wellbeing of those that work in the spaces created.

2 At the heart of Shaw Contract, we design products and solutions with our customers in mind. Laboratories and their surrounding office spaces are places of discovery and must be designed with both focus and relaxation areas to provide scientists and support teams an opportunity to retreat, recharge, and collaborate. Sustainability and efficiency of space are priorities in this segment. We thoughtfully design product solutions that support the diverse needs of Life Science.



Ideas aren't limited to the same four walls.

# Insights

Life Science spaces are rapidly evolving to support the technical, social, and advancing roles of scientific discovery and innovation. At Shaw Contract, we constantly consider ways to answer the changing needs of workplace and laboratory environments. These insights reflect a few of the principle opportunities and challenges of the Life Science sector.

VITALITY TONES (HOMOGENEOUS SHEET 4375V) IN AMP UP (00485)



## **A HYBRID APPROACH TO INNOVATION**

During the pandemic, laboratory utilization increased. While people with more administrative functions in all sectors adopted a hybrid work life, the scientists who worked in laboratories never left. This change in workflow created a new way in which people work, balancing collaboration and individual work differently than before.

To support this approach, Life Science spaces are taking cues from hospitality design while maintaining the requirements of technical and expert scientific functions. Incorporating and connecting spaces to laboratories that stimulate conversations and provide a sense of well-being are critical design elements to foster innovation. Selecting the right flooring enhances the flow from collaboration areas to laboratories, creating flexible and meaningful spaces that connect people.

## **DIVERSE SOLUTIONS; ONE TRUSTED SOURCE**

Laboratories are places of innovation and discovery. Amenity spaces can be as vital to promote discovery as the labs themselves. These areas optimize the experience and wellness of those working in life sciences buildings and campuses. Flooring plays a key role in supporting recreational and leisure spaces making workplaces more appealing, while supporting holistic well-being.

Shaw Contract's diverse range of performance-driven products and comprehensive services offer a single resource for outfitting every part of a life science campus, helping to reinforce the culture and community of the working environment from laboratories to amenity spaces.

## **FLEXIBILITY AS A DESIGN PRINCIPLE**

Flexible and adaptable laboratories and workspaces are more critical than ever before. Space requirements are transforming. The lab-to-office space ratio is subject to change at any given time, and a one-size-fits-all approach no longer supports the shifts and potential growth in personnel or projects. When designed with a flexible and adaptable approach, labs and offices become interchangeable by increasing efficiency with minimal disruption.

Flooring selections for lab spaces, such as sustainable resilient products, can be changed more easily than traditional epoxy flooring, allowing the laboratory to flex with the needs of the scientists.

## **REFLECT BRAND VISION WITH CURATED OPTIONS**

As individual lab and office footprints adapt to change and more variation is desired from people in their work settings, flooring products can push the boundaries of innovative, adaptable spaces. Create a life science workspace and interior landscape to engage and enliven the human experience.

Explore the possibilities of visual branding through striking color, textures, and patterns- all while meeting the industry's requirements for durability, sustainability, and cleanability.

Our thoughtfully curated palettes combine color, texture, pattern and materials, all based on the most intriguing design trends. Discover product ideas to reflect your brand culture at [shawcontract.com](http://shawcontract.com).

# Life Science Solutions

## IMPROVE AIR QUALITY FROM THE GROUND UP

Entryway carpet can significantly reduce the amount of dirt, bacteria, pesticides and other toxins brought indoors from the outside. LEED-EB recommends using entryway systems as a way to improve indoor air quality.

Certification programs like LEED and Well offer instruction to include entry way systems as a part of the building design to help prevent occupants from tracking harmful contaminants indoors, including bacteria, heavy metals, and lawn and agricultural pesticides, among other toxins.

EcoWorx® carpet tile entryway systems are CRI Green Label Plus and Cradle to Cradle Certified®; they are designed and assessed for environmental and social performance across five critical sustainability categories: material health, product circularity, renewable energy and carbon management, water stewardship, and social fairness.

## CREATE THE RIGHT SOUNDSCAPE

At Shaw Contract, we extensively researched, tested, and patented the award-winning acoustics tool, Sound Advisor®, to provide customers with data and a sound file that lets them actually hear the difference between different flooring options.

By bringing science-based decision making to building design and product selection, we empower customers to make the right choice for their needs. Hear the difference: For a review of acoustical performance of flooring, visit [shawcontract.soundadvisor.com](http://shawcontract.soundadvisor.com)

## ADDRESS SLAB MOISTURE PROBLEMS

Excessive slab moisture is one of the top causes of flooring failures. By addressing moisture challenges early on, your floors can last longer and require less maintenance down the road.

Shaw Contract's robust moisture mitigation tools include slab preparation, adhesives, and carpet tile to work with your moisture issues, not against it.

## DYNAMIC SPACES NEED DIVERSE SOLUTIONS

When LVT and carpet tile are needed in a single space, choose from a variety of flooring solutions that install side-by-side with no transitions.

Shaw Contract offers a variety of EcoWorx®, EcoLogix® and StrataWorx® carpet tile to pair with 2.5 mm and 5 mm LVT products. Carpet tile and LVT install together with Shaw 4151 Universal Performance Adhesive, streamlining the installation and performance of multi-use spaces in commercial environments.

Transitionless surfaces reduce the risk of trip-and-fall hazards by decreasing floor elevation changes and ease foot and roller traffic across multiple surfaces. Removing transitions in commercial spaces ensures one less place for dirt and grime to gather, which ultimately eases maintenance and contributes to the overall longevity of your flooring investment.

# Product Solutions for Your Entire Space



Horizon Therapeutics Deerfield, Illinois, USA by Lamar Johnson Collaborative | Photography by Tom Harris Photography  
INLET (LVT 09267V) IN SPINDLE (26140)



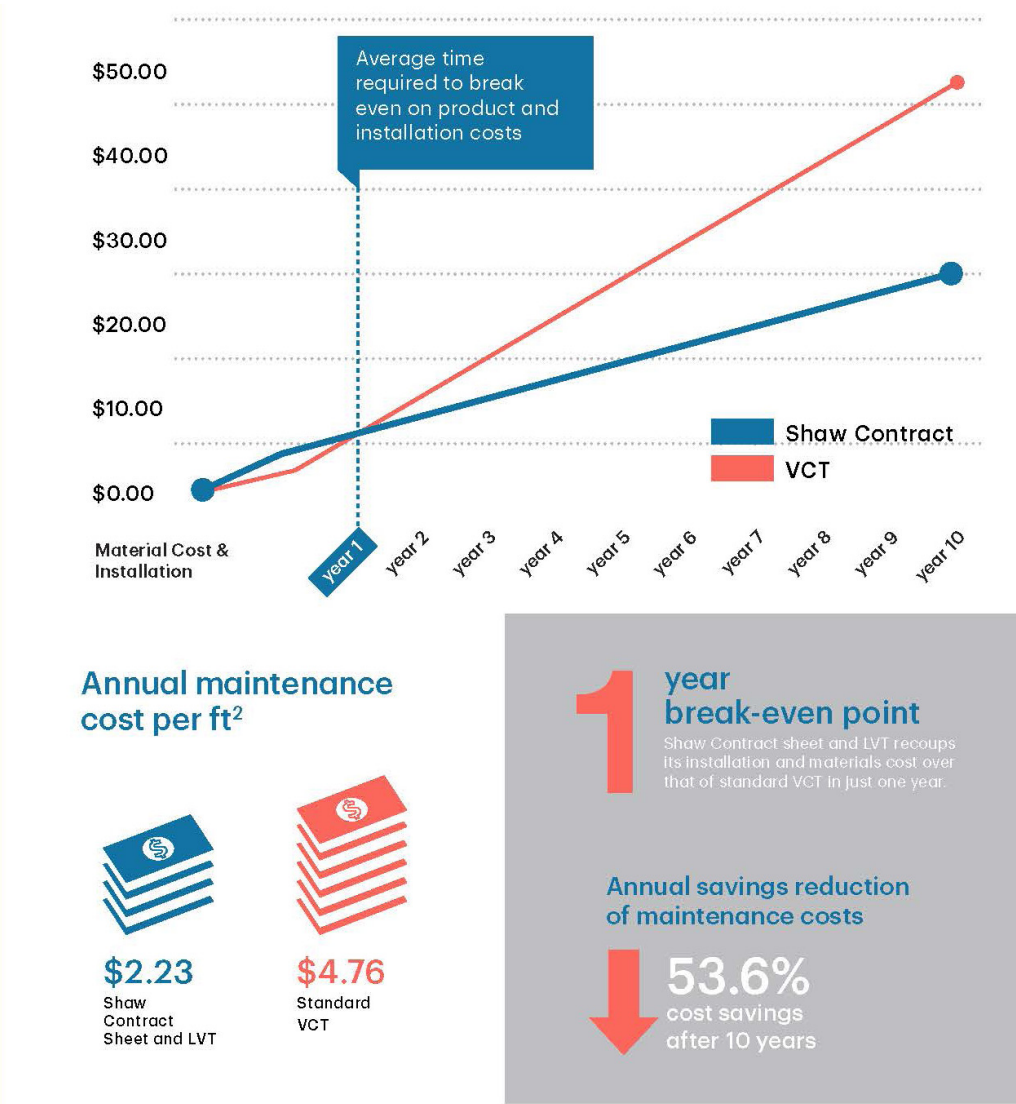
# Flooring options reduce operational and maintenance costs

Shaw Contract resilient sheet products offer high-performance, polish-optional solutions for demanding environments in laboratory spaces. Available in both heterogeneous and homogeneous constructions, durable, low-maintenance sheet offers high PSI resistance to both static and rolling loads. Shaw Contract proprietary Exoguard™ and Exoguard+™ resilient topcoat protects your investment by providing resistance to abrasions and staining.

Resilient products with Exoguard and Exoguard+ top coat positively impact operational budgets by reducing maintenance costs. Our sheet and LVT solutions in polish optional finishes are easy to maintain and offer a 53.6% cost savings over a 10 year period.

A polish optional floor also alleviates glare issues commonly associated with highly polished, shiny flooring surfaces. Glare can distract occupants and create eye fatigue, which compromises vision and disrupts balance.

## Shaw Contract sheet vs. VCT



### Annual maintenance cost per ft<sup>2</sup>



**\$2.23**

Shaw Contract Sheet and LVT



**\$4.76**

Standard VCT

### 1 year break-even point

Shaw Contract sheet and LVT recoups its installation and materials cost over that of standard VCT in just one year.

### Annual savings reduction of maintenance costs

**53.6%**  
cost savings after 10 years

Figures based on average annual maintenance, installation, and material costs in healthcare environments. Visit [ShawContract.com](http://ShawContract.com) for more information.





Horizon Therapeutics Deerfield, Illinois, USA by Lamar Johnson Collaborative | Photography by Tom Harris Photography  
FAULT (BROADLOOM 5A221) IN ONYX SILVER (20505)

## Extensive in stock, quick ship hard and soft surface options

Shaw Contract continually invests in maintaining a deep inventory position and offers the most extensive access to in-stock flooring in the commercial flooring industry.

SelectTWO, a series of curated Quick Ship carpet tile choices, offers four levels of market-ready selections for maximum design and budget flexibility. Choose quick ship products by color and price point; up to 2,500 square yards of carpet ships in two weeks of placing an order.

When renovation timelines are tight and expedited delivery is key for compressed construction schedules, utilize the In Stock Inventory filter on ShawContract.com to see live availability for carpet tile, resilient and broadloom flooring.





# At the heart of Shaw Contract we create products and solutions that positively impact people and the planet. We are Design Optimists.

Sustainability is what unites us. It is our foundation and our purpose: our equal rights, our shared experience, our hopeful future. It is the air we breathe and the earth we stand upon.

## Material Health

We design and manufacture products to optimize human environments.



### Cradle to Cradle Certified® Silver

Shaw Contract carpet tiles are third-party verified as being safe, circular, and responsibly made.



### Indoor Air Quality

People spend 90% of their time indoors, making these environments critical to our wellbeing. These products are Green Label Plus (GLP) Certified, meeting the California Department of Public Health (CDPH) indoor air quality standards for low-emitting products.



### Product Transparency

West Elm + Shaw Contract carpet tiles have an HPD, which is a transparent disclosure of product content and associated health information

### Declare.™ LBC Red List Approved

West Elm + Shaw Contract carpet tiles are LBC Red List Approved. Proprietary ingredients are not disclosed on the Declare label, but all raw materials have been third-party confirmed as being complaint with the RED LIST of the Living Building Challenge.

## Carbon Impact

We are a positive force in the global effort to collectively fight climate change.



### 50% Reduced Carbon Footprint

As a result of Shaw's investments to help reduce our energy and greenhouse gas impact, we have cut our Scope 1 & 2 emissions by more than half since our 2010 baseline.



### Carbon Neutral

This collection of carpet tile is carbon neutral and is manufactured in a carbon neutral manufacturing location.



### Low Embodied Carbon

West Elm + Shaw Contract carpet tiles have a 3rd party verified EPD.



### EcoSolution Q100™ Reduces Carbon

EcoSolution Q100™ is a high-performance nylon fiber with 100% recycled content, optimized for low embodied carbon. Every square yard reduces the carbon impact by 42%, versus traditional carpet tile.

## Circular Economy

We practice a regenerative, closed-loop approach to sustainability.

### re[TURN]™ We Want it Back

At the end of its useful life, we'll reclaim and recycle carpet to make more carpet products. Since 2006, Shaw has reclaimed and recycled nearly 1 billion pounds of post consumer carpet reducing landfill waste.

## Diversity, Equity & Inclusion

We nurture an environment where every voice and perspective can be heard, with equal value placed on seen and unseen experiences.



### Supplier Diversity Program

More than 42% of Shaw Industries' spend\* is with small and diverse suppliers. We want to promote supplier participation that is reflective of Shaw's diverse customer base and local communities, bringing more innovation and opening new markets for growth.

\*Based on spend categories where we have domestic (US) small or diverse suppliers who are capable of meeting our needs.

# People Together, Planet Forever

We are living in times of urgent social and environmental change. As individuals, the design community and societies at large, we are questioning how we can create a better, fairer future. At Shaw Contract, we are a human-centric, people-powered organization with an ambition for progress in every fiber of our beings. We put people at the heart of our sustainability efforts.

We keenly focus on the ingredients that go into products as well as the impacts of sound, moisture, cleanability, and other design considerations because we know the spaces where we innovate, work, learn, heal, create, and gather to solve our greatest challenges impact our wellbeing.

We're addressing environmental health and human experience at the same time.

At the heart of Shaw Contract we design products and solutions with our customers in mind. Everybody counts; people and planet are fundamentally connected. Our social and environmental initiatives are inextricably linked. Shaw Contract sustainability practices center on: Material Health; Circular Economy; Diversity, Equity & Inclusion; and Carbon Impact.

Sustainability is what unites us. It is our foundation and our purpose: our equal rights, our shared experience, our hopeful future. It is the air we breathe and the earth we stand upon.

Almost 90% of the products Shaw Contract manufacturers are Cradle to Cradle Certified<sup>®</sup>, having been assessed for material health, product circularity, renewable energy and carbon management, water stewardship, and social fairness.

Innovation happens where diverging paths meet.

SHAWCONTRACT.COM



INNATE (RESILIENT TILE 0895V) IN MINERAL (95760)