

# ShawContract®

**IN STOCK CATALOGUE**  
JUNE 2021

# ShawContract®

3	Who is Shaw Contract?
4	Why Shaw Contract?
5-11	Resilient options for reception and break out areas
12-27	High Design for impact with new collection releases
28-29	Add some colour and interest for way finding and branding
30-34	Charcoals and greys ideal for a neutral scheme or base build
35	Protect your investment with entrance tiles
36-39	Material Health
40	Contacts Page

# WHO IS SHAW CONTRACT?

Shaw Contract designs and manufactures modular carpet, broadloom and resilient products that give foundation to space and support people within it. Our human-centered approach to service combines mind, hand and heart with the goal to make a Smarter Impact for our clients in all that we do. Ours is an optimistic agenda that places power for positive change at scale in all our hands for people and planet. We're headquartered in Cartersville, Georgia with associates and operations all over the world.

## BE KNOWLEDGE LED

Being a knowledge-led brand means that when we approach our clients and end-users, we come asking questions so that we can create

## BE HUMAN-CENTRIC

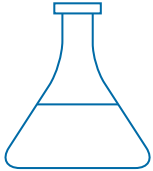
Floors give foundation to space and support people within it. We have a human-centred approach that combines mind, hand and heart. This approach applies to all areas of our culture, business and operation, and from person to product to planet. We are bigger than who we are and what we make.

## BE OPTIMISTIC

A Smarter Impact mindset recognises that everything is connected. As a global organisation, we have the power to make positive change for people and planet. Design is inherently optimistic. Designers dream of a future that doesn't yet exist, and work to bring that future to life. They see a path of opportunity, one where problems can be solved, constraints moved, policies evolved, and behavior changed.

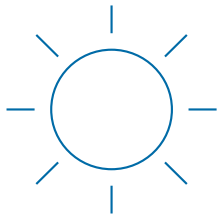


# WHY SHAW CONTRACT?



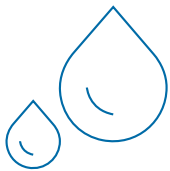
## CREATE HEALTHY WORKPLACES FOR YOUR CLIENTS

- Safe, healthy Cradle to Cradle® certified materials
- Maximum points on Greenstar & WELL certified projects
- Cost savings utilising global economies of scale
- LokDots reduce slab preparation costs for refurbishments
- LokDots allows installation on green slabs at 100% RH



## REDUCE LIFECYCLE OWNERSHIP COSTS

- Lifetime commercial warranty
- Guaranteed take back at end of product lifecycle at no cost
- LokDots allows simple tile replacement and immediate occupancy
- No Rules carpet collections with mergeable dye lots allow



## REDUCE PROJECT COSTS

- VITS system reduces installation costs in occupied spaces
- Guaranteed take back at end of product lifecycle at no cost



## REDUCE PROJECT RISK

- World's largest yarn manufacturer
- World's largest carpet recycler
- Significant In Stock product range available nationally
- Global supply chain to ensure continuity of supply
- Single source flooring provider - carpet tile, broadloom and

## REDUCE IMPACT

- 100% of Shaw Contract's facilities are carbon neutral
- Shaw Contract is a signatory to the United Nations Global Compact, guiding sustainable sourcing, protecting human rights, environment & anti-corruption standards



# COMPOSED LVT 098UV

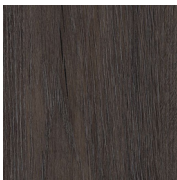


# CONCRETE + COMPOSED



**Stony Oak**  
098UV 0051A6

PRODUCT SPECIFICATIONS	
style/number	composed 098UV
collection	concrete & composed
dimensions	18.11 cm x 122.00 cm (7.13" x 48.03")
construction	COREtec with XRC
attached underlayment	cork
overall thickness	5.5 mm (0.216")
finish	ExoGuard™
wear layer thickness	20 mil or 0.020 (0.5 mm)
Installation	floating or glue down



**Bison**  
098UV 00751



**Cascade**  
098UV 00120



**Chalet**  
098UV 00755



**Grand Teton**  
098UV 00506



**Landscape**  
098UV 00760



**Orchard**  
098UV 00103



**Spice**  
098UV 00720

# CONCRETE LVT 094UV



# CONCRETE + COMPOSED



**Forged Concrete**  
094UV 03507



**Misty Quartz**  
094UV 03501



**Tempered Concrete**  
094UV 03502

PRODUCT SPECIFICATIONS	
style/number	concrete 094UV
collection	concrete & composed
dimensions	46.99 cm x 61.01 cm (18.5" x 24.02")
construction	COREtec with XRC
attached underlayment	cork
overall thickness	5.5 mm (0.216")
finish	ExoGuard™
wear layer thickness	20 mil or 0.020 (0.5 mm)
Installation	floating or glue down



# SOLITUDE LVT 0648V

# SOLITUDE



**Cocoa**  
0648V 48103



**Smoke**  
0648V 48506



**Umber**  
0648V 48761



**Natural**  
0648V 48250



**Cottonwood**  
0648V 48120

## PRODUCT SPECIFICATIONS

style/number  
solitude 0648V

collection  
solitude

dimensions  
15.24 cm x 121.92 cm

construction  
luxury vinyl tile with fibreglass

class/ASTM 1700  
class III, type B

overall thickness  
5.0 mm

finish  
ExoGuard™

wear layer thickness  
20 mil or 0.020 (0.51 mm)

Installation  
glue down



**Urban Ash**  
0648V 48540



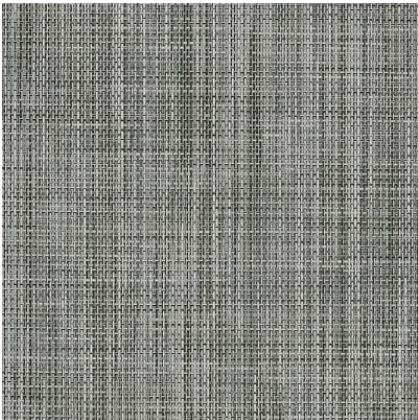
**Woodland**  
0648V 48760



**Char**  
0648V 48549

# RETHINK LVT 0733V

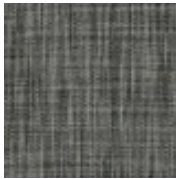
# RETHINK



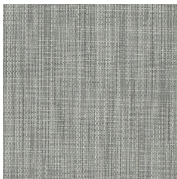
**Hybrid**  
0733V 33100



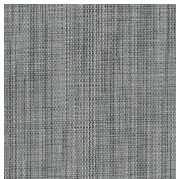
**Minimal**  
0733V 33155



**Carbon**  
0733V 33505



**Core**  
0733V 33515



**Metal**  
0733V 33530

PRODUCT SPECIFICATIONS	
style/number	rethink 0733V
collection	rethink
dimensions	22.86 cm x 91.44 cm
construction	woven luxury vinyl tile
class/ASTM 1700	class III surface decorated vinyl tile
overall thickness	3.0 mm
finish	ExoGuard™ Quartz Enhanced Urethane
Installation	glue down



# ABIDE LVT 4107V



**Conch Shell Oak**  
07140

## PRODUCT SPECIFICATIONS

style/number
Abide 4107V
collection
Abide & Inhabit
dimensions
18 cm x 122 cm
construction
commercial luxury vinyl tile
class/ASTM 1700
class III, type B
overall thickness
2.5 mm
finish
ExoGuard+™
wear layer thickness
20 mil or 0.020 (0.51 mm)
Installation
glue down



**Heirloom Oak**  
07150



**Maize Wenge**  
07210



**Wheat Oak**  
07220



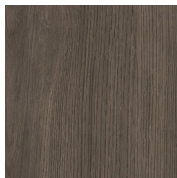
**Tahini Oak**  
07240



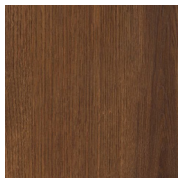
**Caramel Wenge**  
07250



**Cadmium Oak**  
07515



**Anise Oak**  
07570



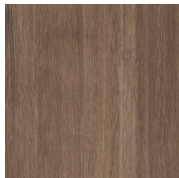
**Spiced Oak**  
07630

# ABIDE LVT 4107V

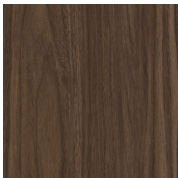


**Brushed Suede Oak**  
07700

PRODUCT SPECIFICATIONS	
style/number	Abide 4107V
collection	Abide & Inhabit
dimensions	18 cm x 122 cm
construction	commercial luxury vinyl tile
class/ASTM 1700	class III, type B
overall thickness	2.5 mm
finish	ExoGuard+™
wear layer thickness	20 mil or 0.020 (0.51 mm)
Installation	glue down



**Palomino Oak**  
07660



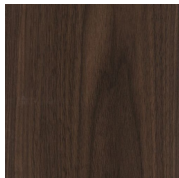
**Allspice Walnut**  
07710



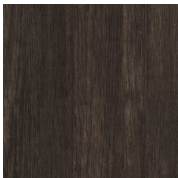
**Coriander Oak**  
07720



**Gabon Wenge**  
07730



**Chocolate Walnut**  
07760



**Raw Umber Oak**  
07780



# QUIET COVER LVT 0186V



Mink  
00720

PRODUCT SPECIFICATIONS	
style/number	quiet cover 0186V
collection	Quiet Cover
dimensions	18 cm x 122 cm
construction	commercial luxury vinyl tile
class/ASTM 1700	class III, type B
overall thickness	5 mm
finish	ExoGuard+™
wear layer thickness	20 mil or 0.020 (0.51 mm)
Installation	floating

# QUIET COVER

# HEDDLE 5T320

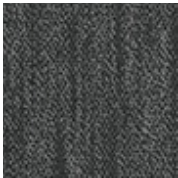
# COMMUNITY



**Argan**  
5T320 01100



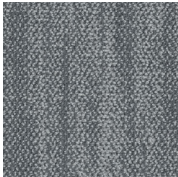
**Wool**  
5T320 01105



**Crafted**  
5T320 01580



**Medina**  
5T320 01505



**Silver**  
5T320 01535

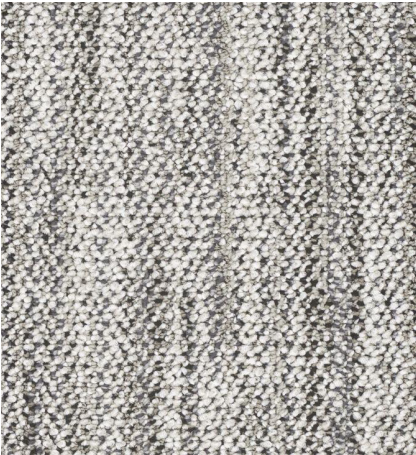
PRODUCT SPECIFICATIONS
style/number heddle 5T320
collection community
dimensions 22.86cm x 91.44cm (9" x 36")
product type tile
fibre product eco solution Q® nylon
backing ecoworx® tile
dye method 100% solution dyed
tufted weight 678.1 g/m² (20 oz)
recommended installation monolithic, herringbone, brick, ashlar, stagger
stitches 34/10cm
gauge 47.2/10cm

**ShawContract®**



# FLAT WEAVE 5T321

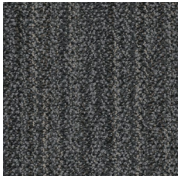
# COMMUNITY



**Argan**  
5T321 01100



**Argan Earth**  
5T321 01101



**Crafted**  
5T321 01580



**Medina**  
5T321 01505



**Silver**  
5T321 01535



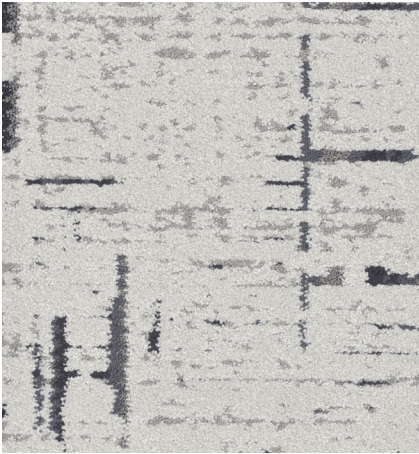
**Wool**  
5T321 01105

PRODUCT SPECIFICATIONS	
style/number	flat weave 5T321
collection	community
dimensions	22.86cm x 91.44cm (9" x 36")
product type	tile
fibre product	eco solution Q® nylon
backing	ecoworx® tile
dye method	100% solution dyed
tufted weight	678.1 g/m <sup>2</sup> (20 oz)
recommended installation	monolithic, herringbone, brick, ashlar, stagger
stitches	34/10cm
gauge	47.2/10cm

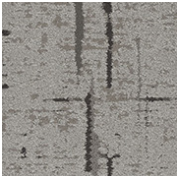


# EXCHANGE 5T304

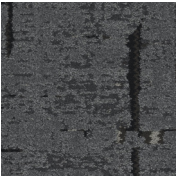
# COMMUNITY



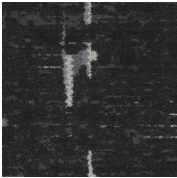
**Argan**  
5T304 01100



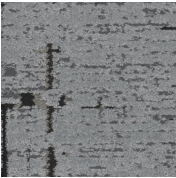
**Wool**  
5T304 01105



**Crafted**  
5T304 01580



**Medina**  
5T304 01505



**Silver**  
5T304 01535

PRODUCT SPECIFICATIONS
style/number
exchange 5T304
collection
community
dimensions
45.72cm x 91.44cm (18" x 36")
product type
tile
fibre product
eco solution Q® nylon
backing
ecoworx® tile
dye method
100% solution dyed
tufted weight
949.4 g/m <sup>2</sup> (28 oz)
recommended installation
monolithic, herringbone, brick, ashlar, stagger,
basketweave, half basketweave
stitches
38/10cm
gauge
39.4/10cm

**ShawContract®**



# BACK WEAVE 5T303

# COMMUNITY



**Argan**  
5T303 01100



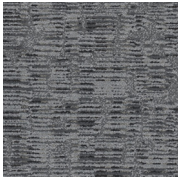
**Wool**  
5T303 01105



**Crafted**  
5T303 01580



**Medina**  
5T303 01505



**Silver**  
5T303 01535

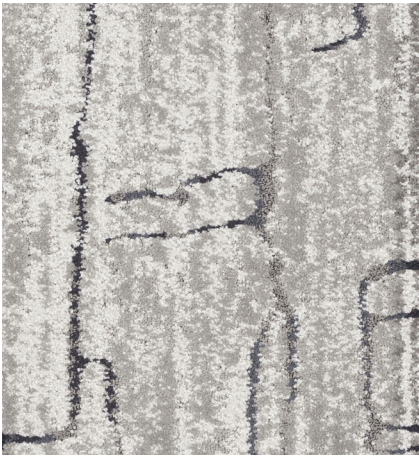
PRODUCT SPECIFICATIONS
style/number
back weave
5T303
collection
community
dimensions
45.72cm x 91.44cm (18" x 36")
product type
tile
fibre product
eco solution Q® nylon
backing
ecoworx® tile
dye method
100% solution dyed
tufted weight
949.4 g/m² (28 oz)
recommended installation
monolithic, herringbone, brick, ashlar, stagger,
basketweave, half basketweave
stitches
38/10cm
gauge
39.4/10cm

**ShawContract®**

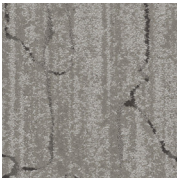


# PROCESS 5T302

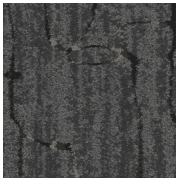
# COMMUNITY



**Argan**  
5T302 01100



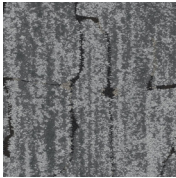
**Wool**  
5T302 01105



**Crafted**  
5T302 01580



**Medina**  
5T302 01505



**Silver**  
5T302 01535

PRODUCT SPECIFICATIONS	
style/number	process 5T302
collection	community
dimensions	45.72cm x 91.44cm (18" x 36")
product type	tile
fibre product	eco solution Q® nylon
backing	ecoworx® tile
dye method	100% solution dyed
tufted weight	949.4 g/m² (28 oz)
recommended installation	monolithic, herringbone, brick, ashlar, stagger,
	basketweave, half basketweave
stitches	
38/10cm	
gauge	
39.4/10cm	

**ShawContract®**



# KNOTTED 5T301

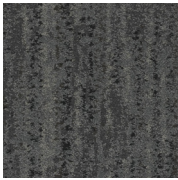
# COMMUNITY



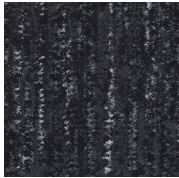
**Argan**  
5T301 01100



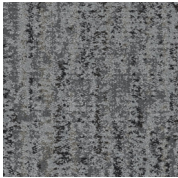
**Wool**  
5T301 01105



**Crafted**  
5T301 01580



**Medina**  
5T301 01505



**Silver**  
5T301 01535

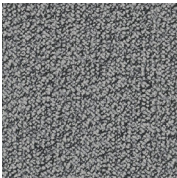
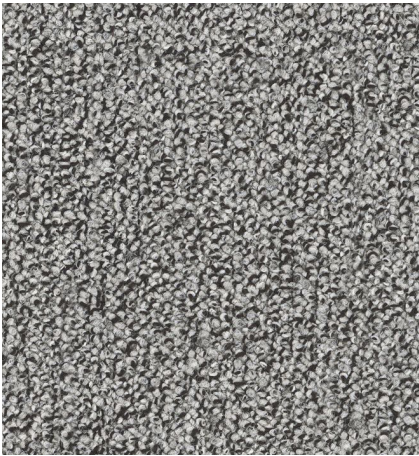
PRODUCT SPECIFICATIONS	
style/number	knotted 5T301
collection	community
dimensions	45.72cm x 91.44cm (18" x 36")
product type	tile
fibre product	eco solution Q® nylon
backing	ecoworx® tile
dye method	100% solution dyed
tufted weight	949.4 g/m <sup>2</sup> (28 oz)
recommended installation	monolithic, herringbone, brick, ashlar, stagger,
	basketweave, half basketweave
stitches	
38/10cm	
gauge	
39.4/10cm	

**ShawContract®**



# NEST 5T238

# HAVEN



**Rainstorm**  
5T238 35535

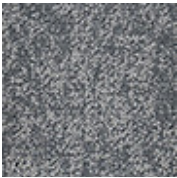
**Greige**  
5T238 35516

PRODUCT SPECIFICATIONS	
style/number	nest 5T238
collection	haven
dimensions	22.86cm x 91.44cm (9" x 36")
product type	tile
fibre product	eco solution Q® nylon
backing	ecoworx® tile
dye method	100% solution dyed
tufted weight	813.8 g/m² (24 oz)
recommended installation	monolithic, herringbone, brick, ashlar, stagger
stitches	38.5/10cm
gauge	47.2/10cm



# SHELTER 5T240

# HAVEN



**Rainstorm**  
5T240 35535

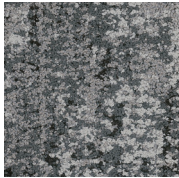
**Greige**  
5T240 35516

PRODUCT SPECIFICATIONS	
style/number	shelter 5T240
collection	haven
dimensions	22.86cm x 91.44cm (9" x 36")
product type	tile
fibre product	eco solution Q® nylon
backing	ecoworx® tile
dye method	100% solution dyed
tufted weight	746 g/m² (22 oz)
recommended installation	monolithic, herringbone, brick, ashlar, stagger
stitches	32/10cm
gauge	47.2/10cm



# FAMILIAR 5T235

# HAVEN



**Rainstorm**  
5T235 35535

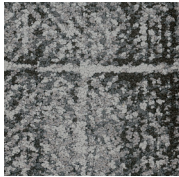
**Greige**  
5T235 35516

PRODUCT SPECIFICATIONS	
style/number	familiar 5T235
collection	haven
dimensions	22.86cm x 91.44cm (9" x 36")
product type	tile
fibre product	eco solution Q® nylon
backing	ecoworx® tile
dye method	100% solution dyed
tufted weight	949.4 g/m² (28 oz)
recommended installation	monolithic, herringbone, brick, ashlar, stagger
stitches	34/10cm
gauge	39.4/10cm



# HONEST 5T236

# HAVEN



**Rainstorm**  
5T236 35535

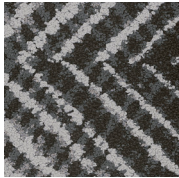
**Greige**  
5T236 35516

PRODUCT SPECIFICATIONS	
style/number	honest 5T236
collection	haven
dimensions	22.86cm x 91.44cm (9" x 36")
product type	tile
fibre product	eco solution Q® nylon
backing	ecoworx® tile
dye method	100% solution dyed
tufted weight	881.6 g/m² (22 oz)
recommended installation	monolithic, herringbone, brick, ashlar, stagger
stitches	32.5/10cm
gauge	39.4/10cm





**Greige**  
5T237 35516



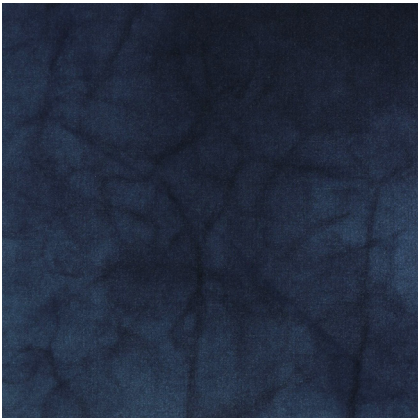
**Rainstorm**  
5T237 35535

PRODUCT SPECIFICATIONS	
style/number	identity 5T237
collection	haven
dimensions	22.86cm x 91.44cm (9" x 36")
product type	tile
fibre product	eco solution Q® nylon
backing	ecoworx® tile
dye method	100% solution dyed
tufted weight	881.6 g/m² (22 oz)
recommended installation	monolithic, herringbone, brick, ashlar, stagger
stitches	32.5/10cm
gauge	39.4/10cm



# DYE LAB 5T041

# DYE LAB

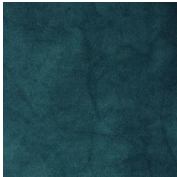


**Indigo**  
5T041 41496

PRODUCT SPECIFICATIONS	
style/number	dye lab 5T041
collection	dye lab
dimensions	60.9cm x 60.9cm (24" x 24")
product type	tile
fibre product	eco solution Q® nylon
backing	ecoworx® tile
dye method	100% piece dyed
tufted weight	1220.61 g/m² (36 oz)
recommended installation	monolithic, 1/4 turn, brick, ashlar,
stitches	43.31/10cm
gauge	39.37/10cm



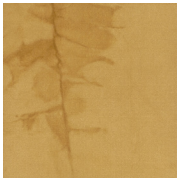
**Cornflower**  
5T041 41480



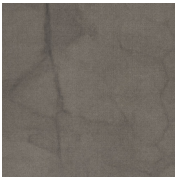
**Woad**  
5T041 41497



**Fustic Wood**  
5T041 41316



**Osage Orange**  
5T041 41202



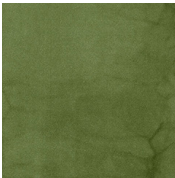
**Henna**  
5T041 41535



**Sumac**  
5T041 41504



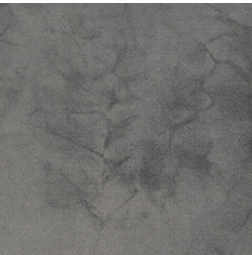
**Sandalwood**  
5T041 41665



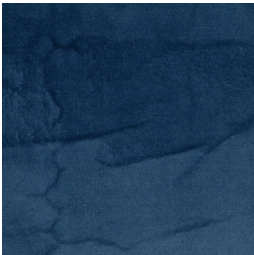
**Fustic Saxon**  
5T041 41396

# DYE LAB 5T041

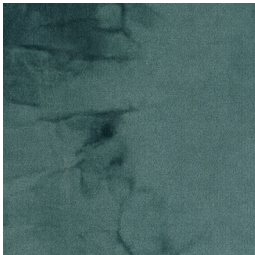
# DYE LAB



**Black Walnut**  
5T041 41402



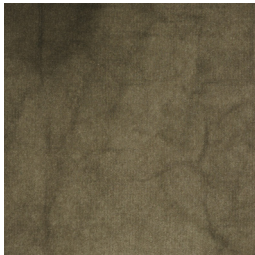
**Saxon**  
5T041 41462



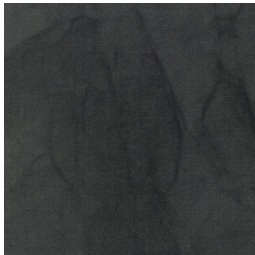
**Knotweed**  
5T041 41491



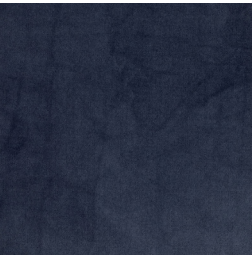
**Logwood**  
5T041 41505



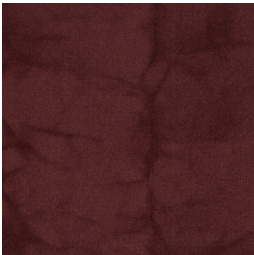
**Black Tea**  
5T041 41516



**Iron**  
5T041 41580



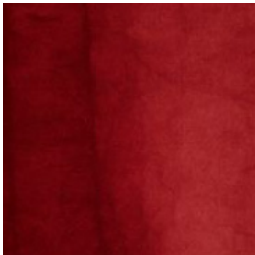
**Iris**  
5T041 41965



**Brazil Wood**  
5T041 41855



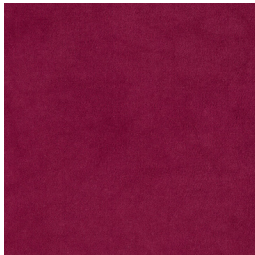
**Madder Root**  
5T041 41864



**Cochineal**  
5T041 41880



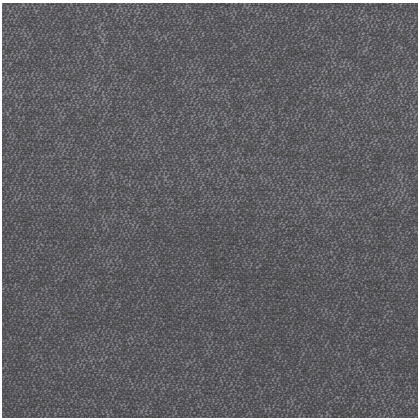
**Lac**  
5T041 41762



**Beet**  
5T041 41890



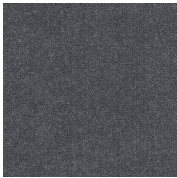
# POURED 5T206



**Mortar**  
5T206 06530

PRODUCT SPECIFICATIONS	
style/number	poured tile 5T206
collection	floor architecture
dimensions	60.96 cm x 60.96 cm (24" x 24")
product type	tile
fibre product	eco solution Q® nylon
backing	ecoworx® tile
dye method	100% solution dyed
tufted weight	542.5 g/m² (16 oz.)
recommended installation	monolithic, quarter turn, ashlar, brick, random
stitches	33/10cm
gauge	47.2/10cm

# FLOOR ARCHITECTURE



**River Rock**  
5T206 06481



**Granite**  
5T206 06500



**Aquamarine**  
5T206 06327



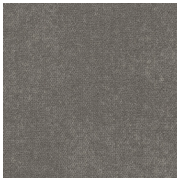
**Mineral**  
5T206 06595



**Shale**  
5T206 06557



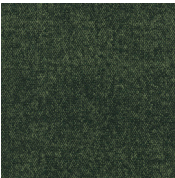
**Lapis**  
5T206 06486



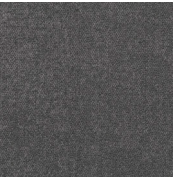
**Concrete**  
5T206 06761



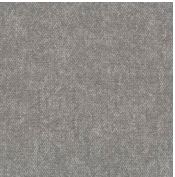
**Aggregate**  
5T206 06501



**Emerald**  
5T206 06335



**Mix**  
5T206 06597



**Gypsum**  
5T206 06515



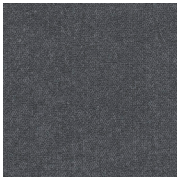
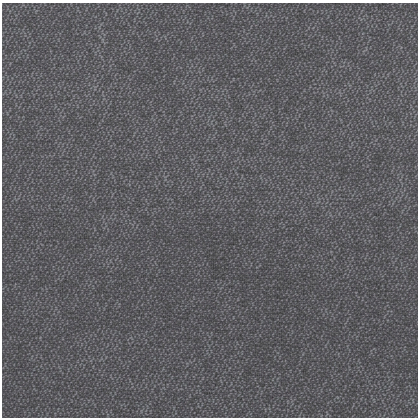
**Limestone**  
5T206 06535



# POURED GX206



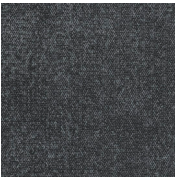
# FLOOR ARCHITECTURE



**River Rock**  
GX206 06481



**Granite**  
GX206 06500



**Aggregate**  
GX206 06501

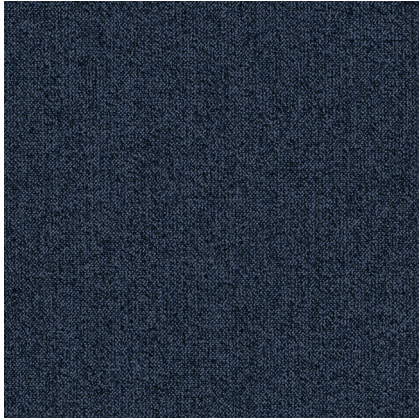
**Mortar**  
GX206 06530

PRODUCT SPECIFICATIONS	
style/number	poured tile GX206
collection	floor architecture
dimensions	60.96 cm x 60.96 cm (24" x 24")
product type	tile
fibre product	eco solution Q® nylon
backing	ecologix® tile
dye method	100% solution dyed
recommended installation	monolithic, quarter turn, ashlar, brick, random

# BELONG 5T261



# KINDRED



**Solace**  
5T261 48485

PRODUCT SPECIFICATIONS	
style/number	belong 5T261
collection	kindred
dimensions	60.96 cm x 60.96 cm (24" x 24")
product type	tile
fibre product	eco solution Q® nylon
backing	ecoworx® tile
dye method	100% solution dyed
tufted weight	610.3 g/m² (18 oz)
recommended installation	monolithic, quarter turn, ashlar, brick, random
stitches	35.0 per 10 cm
gauge	39.4/10cm



# COLOR FRAME 5T081

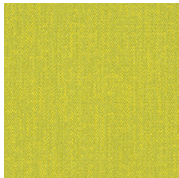


# COLOR FRAME | COLOR FORM

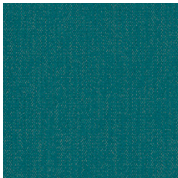


**Glowing**  
5T081 81211

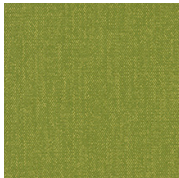
PRODUCT SPECIFICATIONS
style/number
color frame tile 5T081
collection
color frame   color form
dimensions
60.96 cm x 60.96 cm (24" x 24")
product type
tile
fibre product
eco solution Q® nylon
backing
ecoworx® tile
dye method
100% solution dyed
tufted weight
610.30 g/m² (18 oz)
recommended installation
monolithic, 1/4 turn, ashlar, brick, random
stitches
39.37/10cm
gauge
47.24/10cm



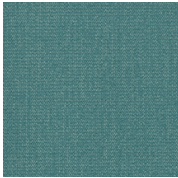
**Frolic**  
5T081 81284



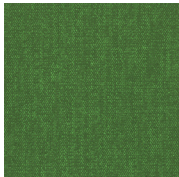
**Tricky**  
5T081 81323



**Hyper Green**  
5T081 81326



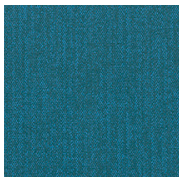
**Quirky**  
5T081 81327



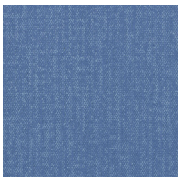
**Imagine**  
5T081 81375



**Enchanted**  
5T081 81370



**Inspire**  
5T081 81405

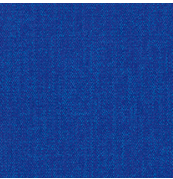


**Day Dream**  
5T081 81415

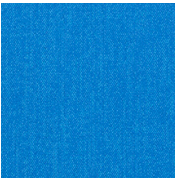


# COLOR FRAME 5T081

# COLOR FRAME | COLOR FORM



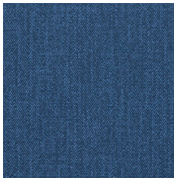
**Charming**  
5T081 81429



**Hyper Blue**  
5T081 81436



**Imply**  
5T081 81485



**Figment**  
5T081 81486



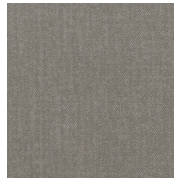
**Magic**  
5T081 81505



**Duplicity**  
5T081 81506



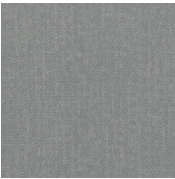
**Mask**  
5T081 81507



**Mystic Grey**  
5T081 81515



**Mystery**  
5T081 81516



**Crystal**  
5T081 81535



**Coax**  
5T081 81549



**Disappear**  
5T081 81557



**Clouded**  
5T081 81595



**Blaze**  
5T081 81668



**Mojo**  
5T081 81675



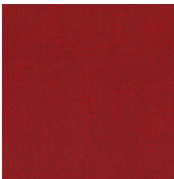
**Utopia**  
5T081 81755



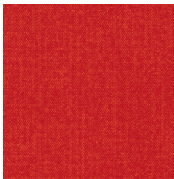
**Observe**  
5T081 81760



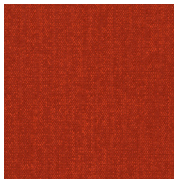
**Appearance**  
5T081 81761



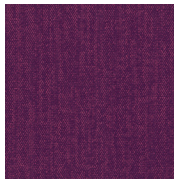
**Aurora**  
5T081 81855



**Stunt**  
5T081 81856



**Ember**  
5T081 81870



**Puzzle**  
5T081 81991

# PRIMARY 5T119



# SPACE WORX



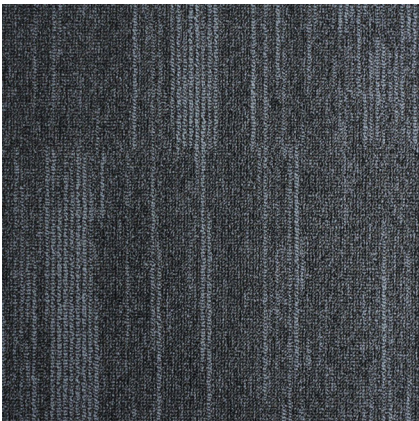
**Raven**  
5T119 17505

PRODUCT SPECIFICATIONS	
style/number	primary 5T119
collection	space worx
dimensions	60.96 cm x 60.96 cm (24" x 24")
product type	tile
fibre product	eco solution Q® nylon
backing	ecoworx® tile
dye method	100% solution dyed
tufted weight	440.77 g/m² (13 oz)
recommended installation	monolithic, ¼ turn, ashlar, brick
stitches	35.43/10cm
gauge	39.37/10cm



# PETO INTRINSIC 42BRX

# PACIFIC



**Tarmac**  
42BRX N577L

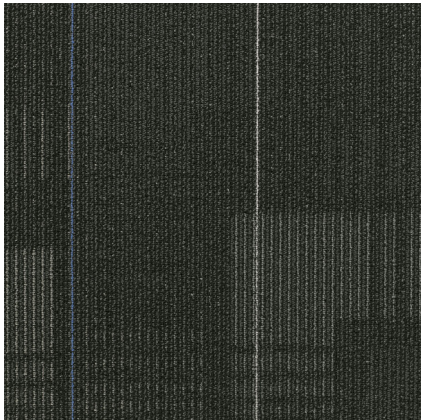
PRODUCT SPECIFICATIONS	
style/number	peto intrinsic 42BRX
collection	pacific
dimensions	60.96 cm x 60.96 cm (24" x 24")
product type	tile
fibre product	eco solution Q® nylon
backing	ecoworx® tile
dye method	100% solution dyed
tufted weight	745.93 g/m² (22 oz)
recommended installation	quarter turn
stitches	31.5/10cm
gauge	47.2/10cm

# DIFFUSE 59575



# DIFFUSE + DISPERSE

səɪnə ɒn



**Magnetic Fields**  
59575 75505

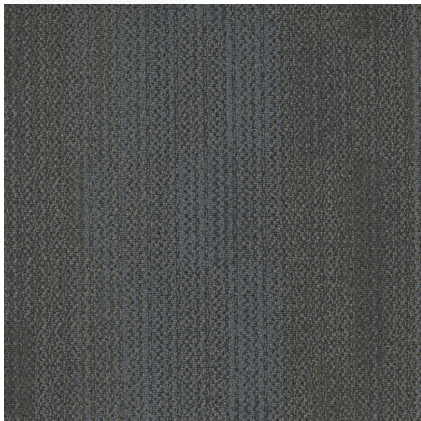
PRODUCT SPECIFICATIONS	
style/number	diffuse 59575
collection	diffuse + disperse
dimensions	60.96 cm x 60.96 cm (24" x 24")
product type	tile
fibre product	eco solution Q® nylon
backing	ecoworx® tile
dye method	100% solution dyed
tufted weight	542.49 g/m² (16 oz)
recommended installation	monolithic, ¼ turn, ashlar, brick, random
stitches	35.4/10cm
gauge	47.2/10cm



# CAPTIVATE 59554



no rules



**Silver Streak**  
59554 54530

PRODUCT SPECIFICATIONS	
style/number	captivate 59554
collection	no rules
dimensions	60.96 cm x 60.96 cm (24" x 24")
product type	tile
fibre product	eco solution Q® nylon
backing	ecoworx® tile
dye method	100% solution dyed
tufted weight	644.2 g/m² (19 oz)
recommended installation	monolithic, ¼ turn, ashlar, brick, random
stitches	36/10cm
gauge	47.2/10cm

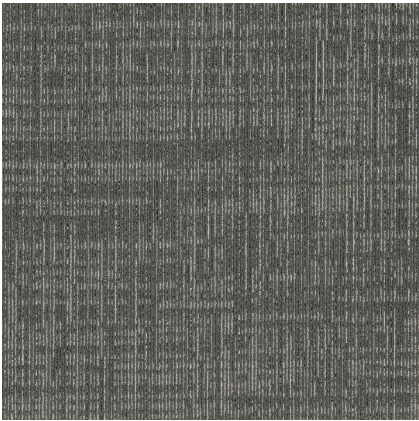
# NO RULES



# DELICATE 5T154



# BRUSH WORKS



**Inkwash**  
5T154 53549

PRODUCT SPECIFICATIONS	
style/number	delicate 5T154
collection	brush works
dimensions	60.96 cm x 60.96 cm (24" x 24")
product type	tile
fibre product	eco solution Q® nylon
backing	ecoworx® tile
dye method	100% solution dyed
tufted weight	542.5 g/m² (16 oz)
recommended installation	monolithic, ¼ turn, ashlar, brick, random
stitches	43.5/10cm
gauge	39.4/10cm



# WELCOME II 5T031

# ENTRANCE MAT

# STEPPIN OUT

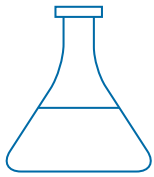


**Charcoal**  
5T031 31549

PRODUCT SPECIFICATIONS	
style/number	welcome II 5T031
collection	steppin out
dimensions	60.96 cm x 60.96 cm (24" x 24")
product type	tile
fibre product	pet polyester
backing	ecoworx® tile
dye method	100% solution dyed
tufted weight	1661.4 g/m² (49 oz)
recommended installation	¼ turn
stitches	36/10cm
gauge	47.2/10cm

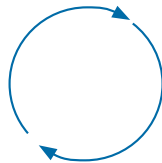
# CRADLE TO CRADLE® DESIGN

SHAW CONTRACT ECOWORX® CARPET TILES UTILISE THE CRADLE TO CRADLE DESIGN PHILOSOPHY™ TO MAXIMISE MATERIAL VALUE WHILE ELIMINATING WASTE



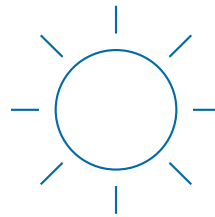
## Material Health

The framework and assessment process to ensure that a product is made from ingredients that are safe and healthy to humans and the environment



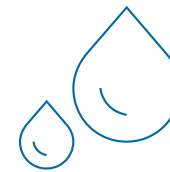
## Material Reutilisation (Product Circularity)

The component that requires a product to use recycled content and be designed to be recycled



## Renewable Energy & Carbon Management

The expectation to use sources of clean, renewable energy to manufacture products and to reduce energy use overall



## Water Stewardship

The principle that water is a precious global resource that must be protected



## Social Fairness

The pillar that ensures business operations are designed to honour and respect all people and nature



# INNOVATIVE PRODUCTS

## LokDots™



**LokDots vs. Glue**

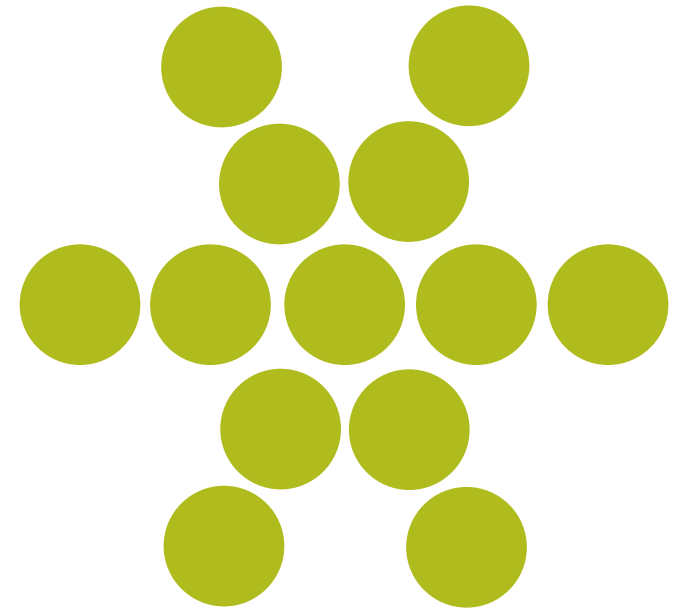


**97%** weight difference

## DRY ADHESIVE DOTS APPLIED TO ECOWORX TILE BACKING

LokDots is a pressure sensitive adhesive for the installation of EcoWorx<sup>®</sup> carpet tile. This odorless system provides an alternative to wet adhesive, virtually eliminating the issue of Volatile Organic Compounds (VOCs), and providing ease and versatility of installation.

- Odorless, moisture tolerant and easy to install
- LokDots allows installation on green slabs at 100% RH
- Ideal for installation in occupied space
- Shaw Contract carpet tile installed with LokDots are moveable, 100% recyclable, and offer guaranteed reclamation and recycling



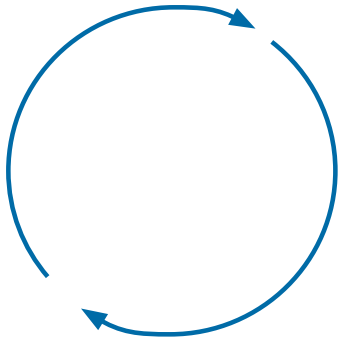
**ShawContract<sup>®</sup>**

# THIRD PARTY CERTIFICATIONS





# ECOWORX® & ECOLOGIX® ENVIRONMENTAL GUARANTEE



GUARANTEED RECLAMATION & RECYCLING.

**WE WANT IT BACK**

## Australia & New Zealand Guarantee:

At the end of its useful life, we will pick up any EcoWorx® & Ecologix® carpet tile and recycle it into new product. Shaw Contract will take back EcoWorx® & Ecologix® material from your flooring contractors warehouse at no cost to you. Shaw will then collate the orders into a full container, and will assume the cost to transport the product to our recycling facilities.

That's our Environmental Guarantee.

# CONTACT:

BUILDING 3A. 650 CHURCH STREET  
RICHMOND VIC 3121

CUSTOMER SERVICE  
P: 1800 556 302

SUITE 48, 26-32 PIRRAMA ROAD  
PYRMONT NSW 2009

shawcontract.com

MAX EKINS  
MARKETING DIRECTOR  
M: 0438 498 297  
E: MAX.EKINS@SHAWCONTRACT.COM

JANIS LO  
ACCOUNT MANAGER - NSW  
M: 0427 737 080  
E: JANIS.LO@SHAWCONTRACT.COM

TERRIE BROWN  
ACCOUNT MANAGER - VIC & TAS  
M: 0488 766 507  
E: TERRIE.BROWN@SHAWCONTRACT.COM

ANTON ARATHOON  
REGIONAL VICE PRESIDENT -  
NORTHERN REGION  
M: 0411 306 711  
E: ANTON.ARATHOON@SHAWCONTRACT.COM

CHELSEA PIRRECA  
ACCOUNT MANAGER - ACT  
M: 0475 757 574  
E: CHELSEA.PIRRECA@SHAWCONTRACT.COM

JOANNA SMITH  
ACCOUNT MANAGER - VIC  
M: 0435 734 142  
E: JOANNA.SMITH@SHAWCONTRACT.COM

DAVE MOOLMAN  
REGIONAL VICE PRESIDENT -  
SOUTHERN REGION  
M: 0418 253 849  
E: DAVE.MOOLMAN@SHAWCONTRACT.COM

KRISTY AUSTINE  
ACCOUNT MANAGER - QLD  
M: 0435 766 356  
E: KRISTY.AUSTINE@SHAWCONTRACT.COM

BORIS STEFANOVIC  
ACCOUNT MANAGER - SA & NT  
M: 0435 766 337  
E: BORIS.STEFANOVIC@SHAWCONTRACT.COM

ALEXANDRA MARCEL  
ACCOUNT MANAGER - NSW  
M: 0438 255 408  
E: ALEXANDRA.MARCEL@SHAWCONTRACT.COM

MICHELLE ROSSI  
ACCOUNT MANAGER - QLD  
M: 0498 002 777  
E: MICHELLE.ROSSI@SHAWCONTRACT.COM

MELANIE JACKSON  
ACCOUNT MANAGER - WA  
M: 0408 746 429  
E: MELANIE.JACKSON@SHAWCONTRACT.COM

CHRIS HODSON  
ACCOUNT MANAGER - NSW  
M: 0437 956 613  
E: CHRIS.HODSON@SHAWCONTRACT.COM

ALLISON TREBILCOCK  
SENIOR ACCOUNT MANAGER - VIC  
M: 0413 717 099  
E: ALLISON.TREBILCOCK@SHAWCONTRACT.COM

TIM STACEY  
ACCOUNT MANAGER - WA  
M: 0418 914 794  
E: TIM.STACEY@SHAWCONTRACT.COM

AMANDA HALAKA  
ACCOUNT MANAGER - NSW  
M: 0458 855 525  
E: AMANDA.HALAKA@SHAWCONTRACT.COM

KARLA HENDY  
ACCOUNT MANAGER - VIC  
M: 0438 202 679  
E: KARLA.HENDY@SHAWCONTRACT.COM

# ShawContract®