



Oct 2023

Lowered Embodied Carbon
APAC Collections

ShawContract®

**Neutral
is not
enough.
Neutral
is not
enough.
Neutral
is not
enough.**



**Lowered
Embodied Carbon**
APAC Collections

Our Pledge

We are living in times of urgent social and environmental change. As individuals, the design community and societies at large, we are questioning how we can create a better, fairer future.

08 collections

52 styles

577 colourways

OUR COLLECTIONS

Canopy	17
Collective	23
Color At Work II	29
Community	32
Haven	36
Living Systems	40
Teamwork	46
West Elm	50



LOW EMBODIED CARBON | CARBON NEUTRAL **CARPET TILE**

HAND WOVEN IN COLOR VIBRANT AGAVE | ECOSOLUTION Q100™ FIBER



ECOWORX® PVC-FREE CARPET TILE BACKING

Neutral is not enough.

EcoSolution Q100™ is a high performance 100% recycled content nylon fiber*. EcoWorx carpet tile products with EcoSolution Q100™ are carbon neutral and have a low carbon footprint as reflected in the EC3 tool.

* Allocated from pre-consumer sources

For more than 20 years, we have invested in material health with our **EcoWorx®** PVC-free carpet tile backing, the first flooring product to be Cradle to Cradle Certified®.

This is more than flooring.

While carbon offsets are a step in the right direction, they are not enough on their own to combat the effects of climate change.

We need to take a holistic approach and focus on embodied carbon and carbon emissions.

By addressing both, we're not just offsetting our impact — we're actively working to reduce it. Being neutral is not enough.

It is more than a product or process or specification or a company buying carbon credits.

It is more than designing things that are good for the earth — what we're taking away from it and what we're giving back.

It is more than material health or circular economy or diversity or carbon impact.

And it is more than being carbon neutral.

We will work with you to reduce our carbon footprint once and for all.

Because neutral is not enough.

**People Together,
Planet Forever is our promise.**

**Neutral is not enough
is our call to action.**

We are one planet.
We cannot afford to be neutral.
**We must make changes and
take action together.**



EcoSolution Q100™ Nylon

Fiber

Shaw Industries Group, Inc., the parent company of Shaw Contract is the largest carpet manufacturer in the world. It is our brand vision to ensure with each decision, we let knowledge lead the way; we put people first; and we are optimistic about our connected power for positive change. To do this, we take responsibility for every step of the process including a key factor in carpet performance - fiber.

One Piece of the Puzzle

As part of a vertically integrated company, Shaw Contract takes responsibility for the impact our finished product has on the occupants of a space - from the raw materials we source for fiber pellets, to fiber extrusion, to designing and manufacturing carpet. We understand the impact fiber has on the overall performance of carpet. Our goal is to deliver high performance flooring without compromising design or health of the people and planet.

In addition to our environmental responsibility, Shaw Contract offers the most comprehensive warranties in the industry, maintaining accountability for the entire flooring system—from the engineering of the backing and fiber to the actual construction.

Shaw Industries Group, Inc. extrudes Nylon 6 fiber for our products and as a supplier for other manufacturers – making the company the largest producer, in the flooring industry.



Ingredients Matter

We believe in creating sustainable products for people and planet. Following the Cradle to Cradle Certified® Products Program, our products are made from ingredients that have been third party verified as safe for the health and wellbeing of people and the planet.

EcoSolution Q100™ fiber is constructed with 100% recycled content, allocated from waste minimization and collection efforts. Additionally EcoSolution Q100™ fiber, a Nylon 6 fiber, requires less energy to produce during the extrusion process of manufacturing due to a lower melting point than Nylon 6,6.

EcoSolution Q100™ is a high performance 100% recycled content nylon fiber. Products with EcoSolution Q100™ are optimized for low embodied carbon as reflected in the EC3 tool and are carbon neutral. Every square yard of Shaw Contract EcoWorx® flooring with EcoSolution Q100™ fiber reduces the carbon impact by 42%, versus traditional carpet tile.

EcoSolution Q100™ fiber is engineered to reduce the visibility of dirt and soil while retaining color and appearance - meaning as long as a maintenance routine is implemented on a regular basis, the yarn will not change in color due to exposure of light or atmospheric elements. With more than 200 color options from vibrant hues to subtle neutrals, EcoSolution Q100™ fiber is our foundation, expanding across multiple market sectors due to durability and ease of maintenance.



Built to Perform

Our EcoSolution Q100™ fibers is 100% solution-dyed, recyclable nylon engineered to reduce soiling while retaining color and appearance.



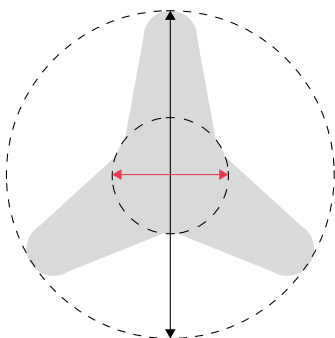
Proven Fiber Performance

Shaw Contract's decades of experience in the flooring industry led us to develop our own fiber technology. EcoSolution Q100™ fibers are 100% recyclable nylon engineered to reduce soiling while retaining color and appearance.



Lifetime Stain and Color Protection

EcoSolution Q100™ is backed by a Lifetime Commercial Warranty covering fiber abrasive wear, static protection, staining and colorfastness to light and atmospheric contaminants.

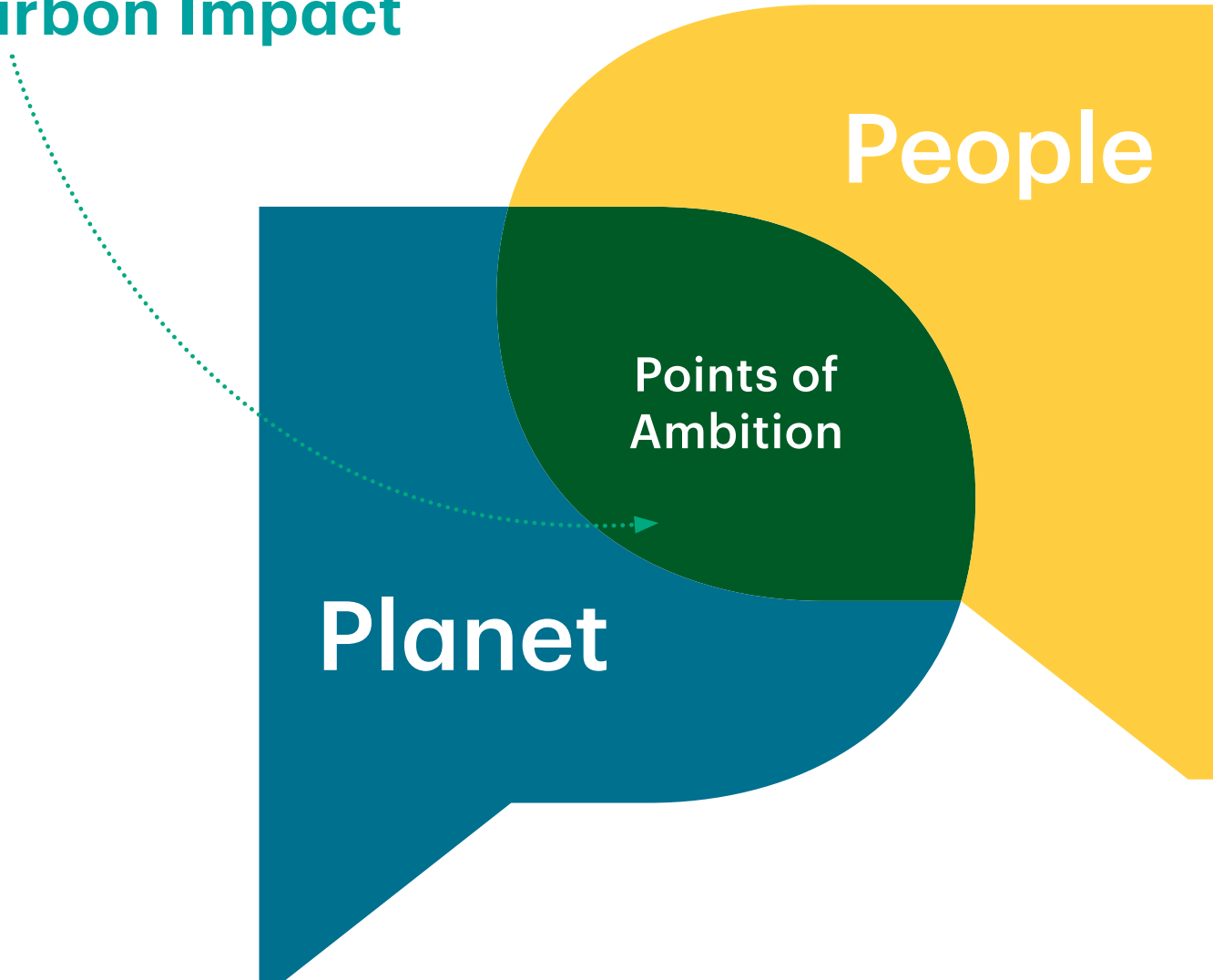


EcoSolution Q100™ fiber is produced in the trilobal shape and has an average modification ratio of 2.8.

Points of Ambition

People and planet are fundamentally connected. Our social and environmental initiatives are inextricably linked.

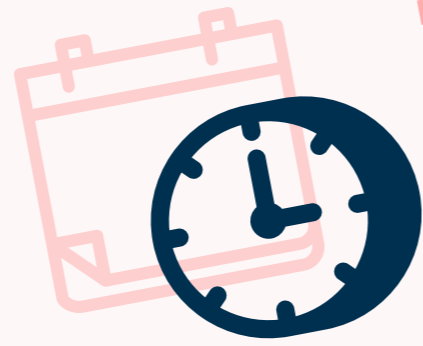
1. **Material Health**
2. **Circular Economy**
3. **Diversity, Equity & Inclusion**
4. **Carbon Impact**



Material Health



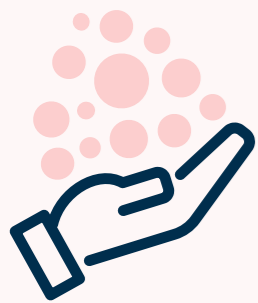
nearly **90%**
products we manufacture
are Cradle to Cradle Certified®



more than
20 yrs

invested in material health

For more than 20 years, we have invested in material health with our EcoWorx® PVC-free carpet tile backing, the first flooring product to be Cradle to Cradle Certified®.

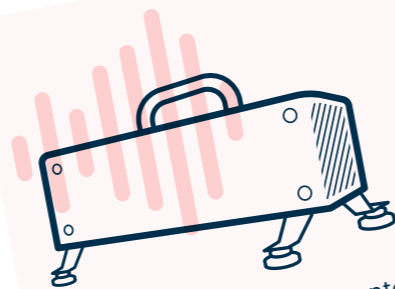


approx. **800 million**
kgs of materials assessed for
material health in 2020



**Presidential
Green Chemistry
Award**

awarded to EcoWorx®
by the US Environmental
Protection Agency



**Sound
Advisor®**
patented tool

Sound Advisor® is a patented tool developed by Shaw Industries to analyse and select the best product for clients' environments based on acoustics. Good sound levels are essential for the health & wellbeing of people in the space.



**Ortho-Phthalate
Free**
resilient products

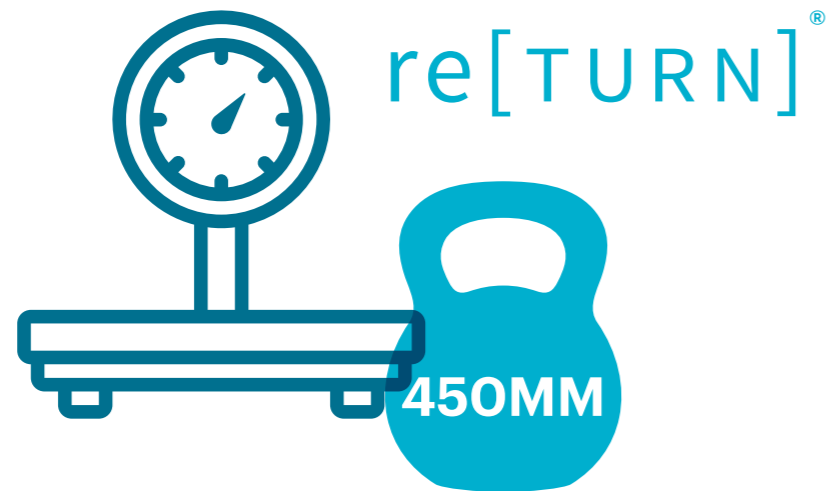
All of our resilient LVT products are ortho-phthalate-free and FloorScore® certified. We continue to invest in PVC-free resilient and hybrid flooring products and innovate new materials including bio-based and other PVC-free materials.

By specifying **Cradle to Cradle Certified®** products, you can be assured that they have **met rigorous material health standards.**

We proudly align with:



Circular Economy



approx.
450MM kgs

**of carpet
recycled**

SINCE 2006

Through the re[TURN]® Reclamation Program, we can make our buildings our future source of raw materials.

Shaw will pick up EcoWorx® products at any international port, and turn them into the next generation of EcoWorx® carpet tile.



over
2 billion
plastic bottles
recycled annually

That bottle that you recycled yesterday could be in our EcoLogix® backing tomorrow.



EcoLogix® contains
67 bottles
per m²

EcoLogix® is Cradle to Cradle Certified® Bronze and offers high post-consumer recycled content — from the green polyester needled pad, improved acoustics, and cushion underfoot.

And we are dedicated to improving recycled content:

PET Resilient is a new, innovative concept made from 40% post-consumer polyethylene terephthalate (PET) with no plasticisers, chlorine, or PVC.

It contains 172 bottles per m² and 64 bottles per plank.



40%
post-consumer PET
IN PET HYBRID

PET Hybrid is a new flooring material, made from 40% post-consumer PET.

This highly durable product is 4 mm thick and can be installed side-by-side with most EcoWorx® carpet tiles with no need for transitions.

Diversity, Equity & Inclusion

UN Global Compact

Shaw is a signatory of the UN Global Compact, and our sustainable sourcing policy and related terms and conditions for all suppliers cover its principles focused on upholding and protecting human rights, labor, environment and anti-corruption standards.



30% spend

with small & diverse businesses

At Shaw we want to promote supplier participation that is reflective of Shaw's diverse customer base and local community. We believe having a strong Supplier Diversity Program is strategic for bringing more innovation to our business and opening new markets for growth.

USD 6.9MM contributed

Shaw and its associates contributed over \$6.9 million to nonprofit and philanthropic organisations in 2020.

Associate Resource Groups

An Associate Resource Group is a support network built amongst coworkers with a shared identity characteristic and fosters inclusivity through dialogue within the larger Shaw values.



The company we keep:

Shaw Contract Partnerships

- Center for Green Schools
- DIFFA
- Chicago Food Depository
- MASS Partnership

Global Efforts

- World Green Building Council
- Health & Wellbeing Framework Supporter
- Global Day for People+Planet

Hyperlocal Efforts

- Surge (UAE)
- Centro Espirita Paulo de Tarso (Brasil)
- Habitat for Humanity (Canada)
- Amity Foundation (China)
- Art Outreach (Singapore)
- Samarthanam Trust (India)
- 15 Trees (Australia)

Shaw Enterprise Community Support & Philanthropic Giving

- St. Jude's Children's Research Hospital®, United Way, Homes for Our Troops®, Junior Achievement®, Floor Covering Industry Foundation, Habitat for Humanity®, Camp D.E.M. (Design, Engineering & Manufacturing), FIRST® Robotics Competition, FIRST® Tech Challenge

Carbon Impact

Our carbon neutral solutions:

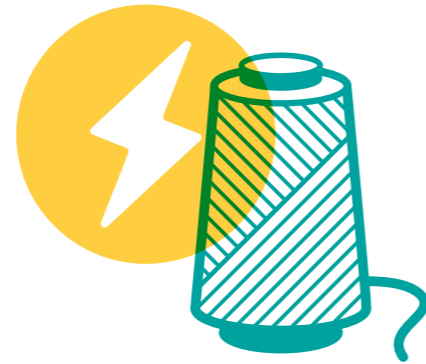
Offering a broad portfolio of carbon neutral products.

We optimise products for lower embodied carbon.

How do we do this?

1. We measure the embodied carbon.
2. We utilise 100% recycled-content nylon fibre* — our new EcoSolution Q100™ yarn system.
3. Our re[TURN]® Reclamation Program provides post-consumer recycled content for our backing.

* Allocated from pre-consumer sources.



100%

Recycled Content EcoSolution Q100™

EcoSolution Q100™ is a high performance nylon fibre with 100% pre-consumer content.* Products with EcoSolution Q100™ have low embodied carbon as reflected in the EC3 tool and are carbon neutral.



40% less

GHG Intensity compared to 2010

We also have reduced our greenhouse gas (GHG) intensity by 40% compared to 2010 (per kg of finished product).



over 50% reduced

operational carbon footprint compared to 2010

As a result of Shaw's investments to help reduce our energy and GHG impact, we have cut our Scope 1 & 2 emissions by more than half since our 2010 baseline.



100%

carbon neutral commercial carpet operations globally

Shaw has achieved carbon neutrality in our commercial carpet operations (since 2018).

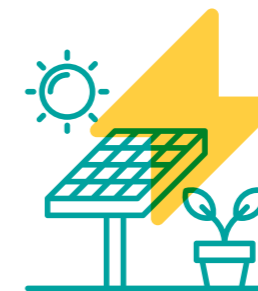


net zero

carbon buildings commitment

World Green Building Council

Shaw Contract joined as a charter signatory this momentous effort in September 2018, and we report our progress annually.



1MW

solar array

powered carpet tile manufacturing facility

In 2013, Shaw installed a 1 megawatt solar array atop its carpet tile manufacturing facility in Cartersville, USA (Plant X), which generates enough clean energy to power 100 homes in Georgia, USA, annually.

**Lowered Embodied Carbon
APAC Collections**

Canopy

Just like the natural world, Canopy is designed for your most organic installation ideas. A No Rules collection, it can be installed in any configuration you desire. Design details like color patterning, layered textures and smart gradations mimic nature as they make it easy to install, mix dye lots and replace as needed.

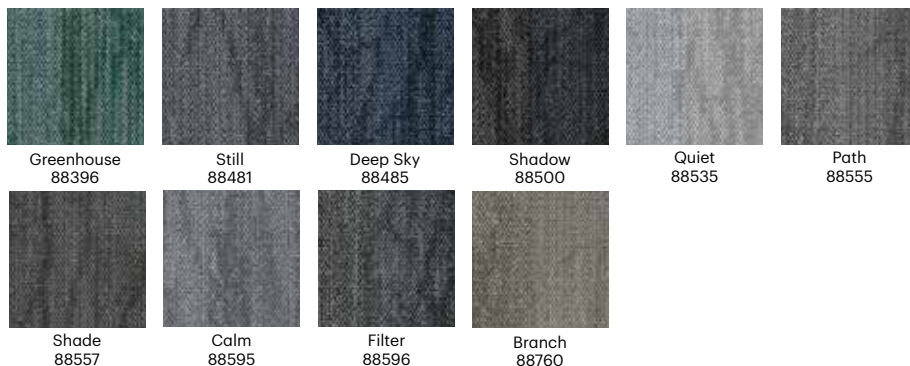




88481 Still

Product Specifications

Style Number	5T392	
Fibre	Eco Solution Q100™ Nylon	
Dye Method	100% Solution Dyed	
Tufted Weight	19 oz.	644.2 g/m ²
Gauge	1/12	47.2/10 cm
Average Density	6333 ozs./yd ³	0.234 g/cm ³
Product Size	9 in x 36 in	22.9 cm x 91.4 cm
Secondary Backing	EcoWorx®	
Recommended Installation	Monolithic, Ashlar, Brick, Herringbone, Stagger	



Coordinating Products

Elevate Tile, Balcony Tile, Habitat Tile, Suspend Tile, Preserve Tile, Weathered Tile, Wildwood Tile, Weathered Color Tile

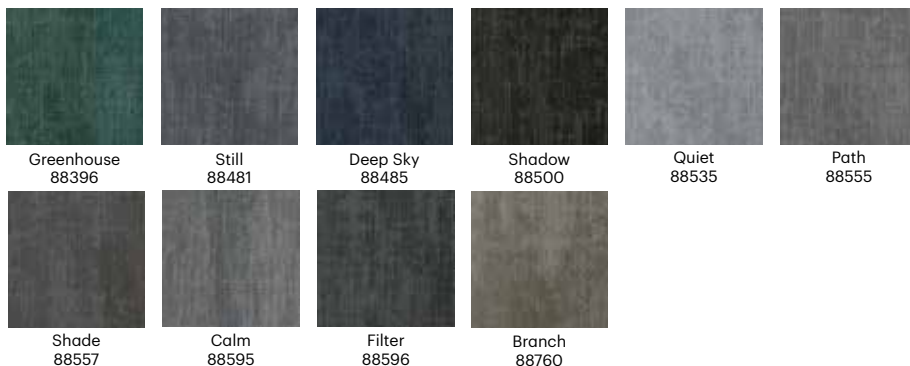
Balcony Tile | Canopy



88760 Branch

Product Specifications

Style Number	5T389	
Fibre	Eco Solution Q100™ Nylon	
Dye Method	100% Solution Dyed	
Tufted Weight	17 oz.	576.4 g/m ²
Gauge	1/12	47.2/10 cm
Average Density	5942 ozs./yd ³	0.22 g/cm ³
Product Size	24 in x 24 in	61 cm x 61 cm
Secondary Backing	EcoWorx®	
Recommended Installation	Quarter Turn, Random, Monolithic, Brick, Ashlar	



Coordinating Products

Elevate Tile, Habitat Tile, Suspend Tile, Above Tile, Preserve Tile, Weathered Tile, Wildwood Tile, Weathered Color Tile



88760 Branch

Coordinating Products

Balcony Tile, Habitat Tile, Suspend Tile, Above Tile, Preserve Tile, Weathered Tile, Wildwood Tile, Weathered Color Tile

Product Specifications

Style Number	5T388	
Fibre	Eco Solution Q100™ Nylon	
Dye Method	100% Solution Dyed	
Tufted Weight	17 oz.	576.4 g/m ²
Gauge	1/12	47.2/10 cm
Average Density	6581 ozs./yd ³	0.243 g/cm ³
Product Size	24 in x 24 in	61 cm x 61 cm
Secondary Backing	EcoWorx®	
Recommended Installation	Quarter Turn, Random, Monolithic, Brick, Ashlar	



Carpet Tile | Collection: Canopy



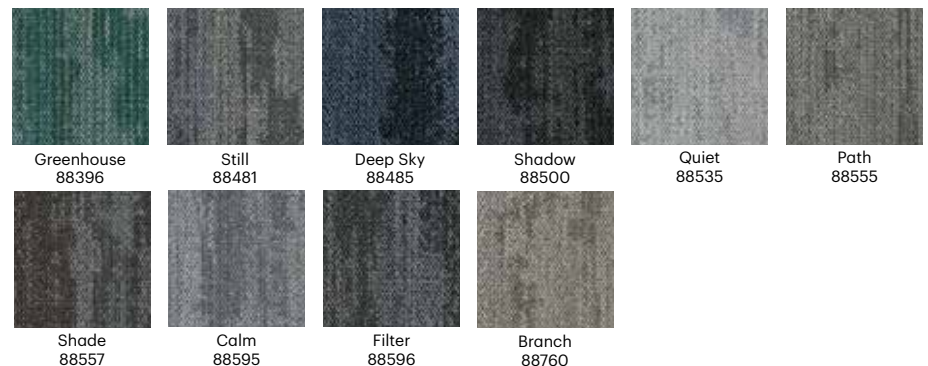
88481 Still

Coordinating Products

Elevate Tile, Balcony Tile, Suspend Tile, Above Tile, Preserve Tile, Weathered Tile, Wildwood Tile, Weathered Color Tile

Product Specifications

Style Number	5T390	
Fibre	Eco Solution Q100™ Nylon	
Dye Method	100% Solution Dyed	
Tufted Weight	19 oz.	644.2 g/m ²
Gauge	1/12	47.2/10 cm
Average Density	6333 ozs./yd ³	0.234 g/cm ³
Product Size	9 in x 36 in	22.9 cm x 91.4 cm
Secondary Backing	EcoWorx®	
Recommended Installation	Monolithic, Ashlar, Brick, Herringbone, Stagger	





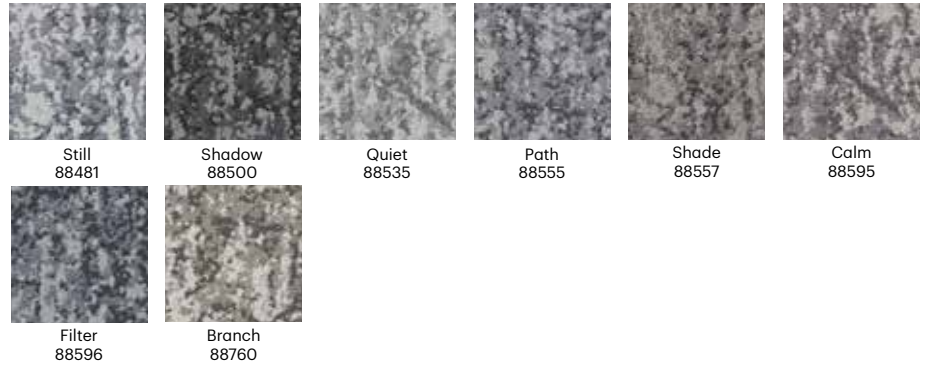
88760 Branch

Coordinating Products

Elevate Tile, Balcony Tile, Habitat Tile, Suspend Tile, Above Tile, Weathered Tile, Wildwood Tile, Weathered Color Tile

Product Specifications

Style Number	5T423	
Fibre	Eco Solution Q100™ Nylon	
Dye Method	100% Solution Dyed	
Tufted Weight	24 oz.	813.7 g/m ²
Gauge	1/10	39.4/10 cm
Average Density	7927 ozs./yd ³	0.293 g/cm ³
Product Size	9 in x 36 in	22.9 cm x 91.4 cm
Secondary Backing	EcoWorx®	
Recommended Installation	Monolithic, Ashlar, Brick, Herringbone, Stagger	



Carpet Tile | Collection: Canopy

Suspend Tile | Canopy



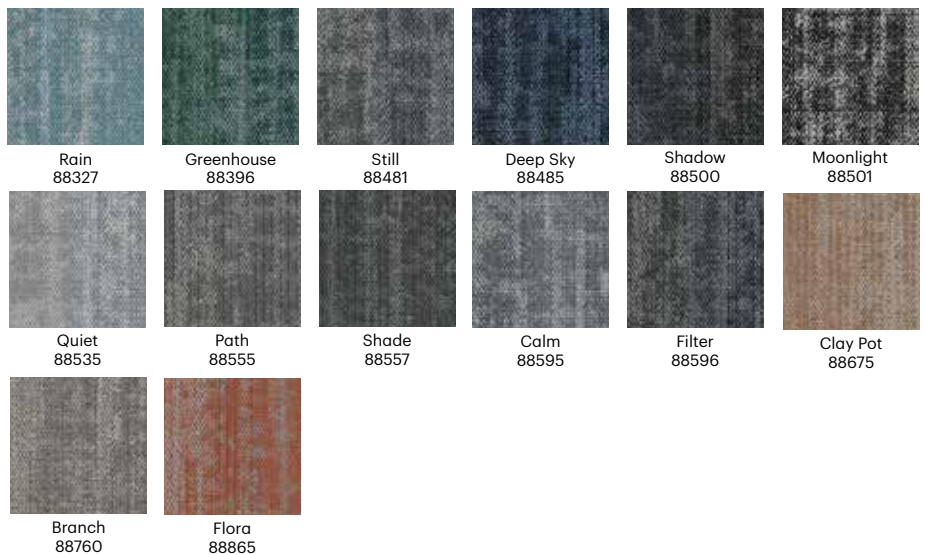
88481 Still

Coordinating Products

Elevate Tile, Balcony Tile, Habitat Tile, Above Tile, Preserve Tile, Weathered Tile, Wildwood Tile, Weathered Color Tile

Product Specifications

Style Number	5T391	
Fibre	Eco Solution Q100™ Nylon	
Dye Method	100% Solution Dyed	
Tufted Weight	19 oz.	644.2 g/m ²
Gauge	1/12	47.2/10 cm
Average Density	5700 ozs./yd ³	0.211 g/cm ³
Product Size	9 in x 36 in	22.9 cm x 91.4 cm
Secondary Backing	EcoWorx®	
Recommended Installation	Monolithic, Ashlar, Brick, Herringbone, Stagger	





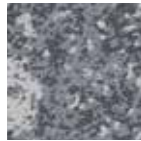
88596 Filter

Coordinating Products

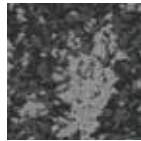
Elevate Tile, Balcony Tile, Habitat Tile, Suspend Tile, Above Tile, Preserve Tile, Wildwood Tile, Weathered Color Tile

Product Specifications

Style Number	5T424	
Fibre	Eco Solution Q100™ Nylon	
Dye Method	100% Solution Dyed	
Tufted Weight	24 oz.	813.7 g/m ²
Gauge	1/10	39.4/10 cm
Average Density	7448 ozs./yd ³	0.276 g/cm ³
Product Size	9 in x 36 in	22.9 cm x 91.4 cm
Secondary Backing	EcoWorx®	
Recommended Installation	Monolithic, Ashlar, Brick, Herringbone, Stagger	



Still
88481



Shadow
88500



Quiet
88535



Path
88555



Shade
88557



Calm
88595



Filter
88596



Branch
88760



88674 Coral Branch

Coordinating Products

Elevate Tile, Balcony Tile, Habitat Tile, Suspend Tile, Above Tile, Preserve Tile, Weathered Tile, Wildwood Tile

Product Specifications

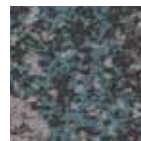
Style Number	5T426	
Fibre	Eco Solution Q100™ Nylon	
Dye Method	100% Solution Dyed	
Tufted Weight	24 oz.	813.7 g/m ²
Gauge	1/10	39.4/10 cm
Average Density	7385 ozs./yd ³	0.273 g/cm ³
Product Size	9 in x 36 in	22.9 cm x 91.4 cm
Secondary Backing	EcoWorx®	
Recommended Installation	Monolithic, Ashlar, Brick, Herringbone, Stagger	



Golden Calm
88210



Nature Quiet
88326



Rain Shade
88327



Greenhouse Filter
88396



Lake Still
88411



Deep Sky Shadow
88485



Coral Branch
88674



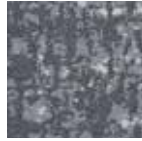
Flora Path
88865



88557 Shade

Product Specifications

Style Number	5T425	
Fibre	Eco Solution Q100™ Nylon	
Dye Method	100% Solution Dyed	
Tufted Weight	24 oz.	813.7 g/m ²
Gauge	1/10	39.4/10 cm
Average Density	7322 ozs./yd ³	0.271 g/cm ³
Product Size	9 in x 36 in	22.9 cm x 91.4 cm
Secondary Backing	EcoWorx®	
Recommended Installation	Monolithic, Ashlar, Brick, Herringbone, Stagger	



Still
88481



Shadow
88500



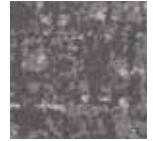
Quiet
88535



Path
88555



Shade
88557



Calm
88595



Filter
88596



Branch
88760

Coordinating Products

Elevate Tile, Balcony Tile, Habitat Tile, Suspend Tile, Above Tile, Preserve Tile, Weathered Tile, Weathered Color Tile

Collective

Individually we are unique, together we are whole. Collective includes 9 distinctive styles that work effectively across all segments where teamwork is essential to success. All styles in Collective are Low Embodied Carbon+ Carbon Neutral along with being Cradle to Cradle Certified® Silver. Putting people and planet together as they need to be.

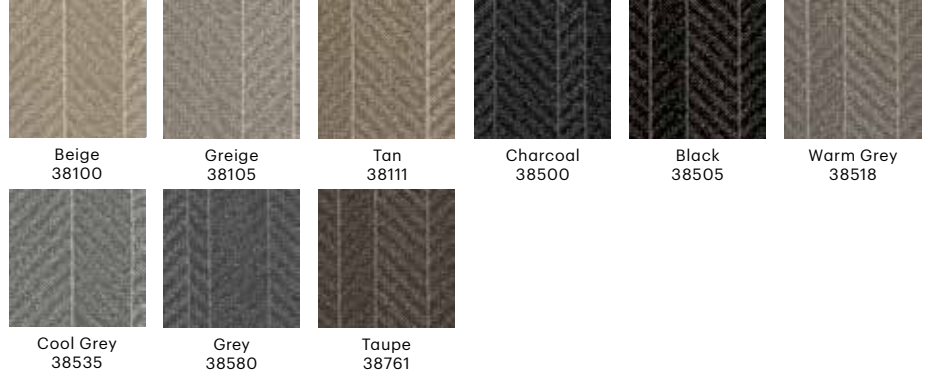




38105 Greige

Product Specifications

Style Number	5T438	
Fibre	Eco Solution Q100™ Nylon	
Dye Method	100% Solution Dyed	
Tufted Weight	19 oz.	644.2 g/m2
Gauge	1/12	47.2/10 cm
Average Density	7862 ozs./yd³	9.34 kilotex
Product Size	9 in x 36 in	22.9 cm x 91.4 cm
Secondary Backing	EcoWorx® Tile	
Recommended Installation	Monolithic, Brick, Ashlar, Herringbone, Stagger	



Coordinating Products

Collective II Tile, Collective III Tile, Collective IV Tile, Collective V Tile, Hand in Hand Tile, Side by Side Tile, In Common Tile

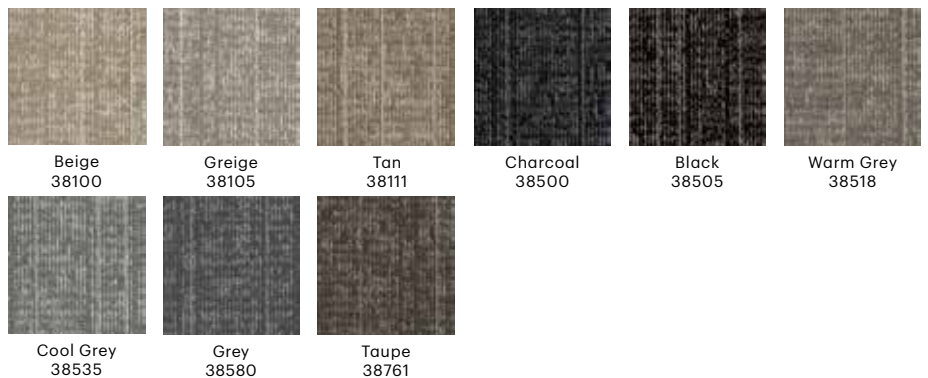
Carpet Tile | Collection: Collective



38105 Greige

Product Specifications

Style Number	5T439	
Fibre	Eco Solution Q100™ Nylon	
Dye Method	100% Solution Dyed	
Tufted Weight	19 oz.	644.2 g/m2
Gauge	1/12	47.2/10 cm
Average Density	7862 ozs./yd³	9.34 kilotex
Product Size	9 in x 36 in	22.9 cm x 91.4 cm
Secondary Backing	EcoWorx® Tile	
Recommended Installation	Monolithic, Brick, Ashlar, Herringbone, Stagger	



Coordinating Products

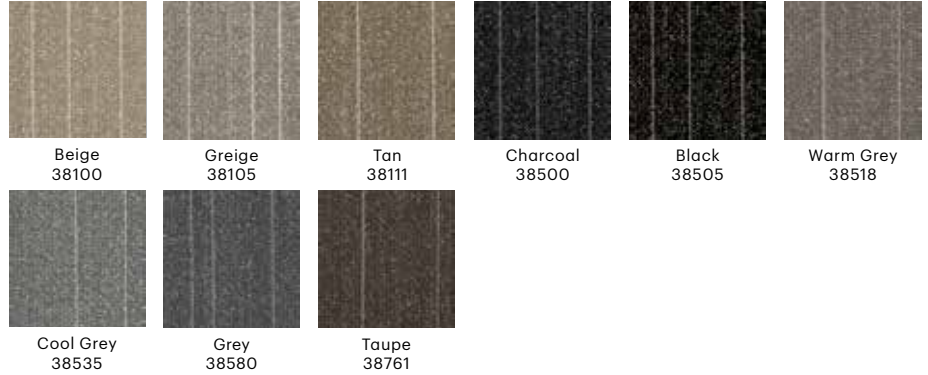
Collective I Tile, Collective III Tile, Collective IV Tile, Collective V Tile, Hand in Hand Tile, Side by Side Tile, In Common Tile



38105 Greige

Product Specifications

Style Number	5T440	
Fibre	Eco Solution Q100™ Nylon	
Dye Method	100% Solution Dyed	
Tufted Weight	19 oz.	644.2 g/m2
Gauge	1/12	47.2/10 cm
Average Density	7862 ozs./yd³	9.34 kilotex
Product Size	9 in x 36 in	22.9 cm x 91.4 cm
Secondary Backing	EcoWorx® Tile	
Recommended Installation	Monolithic, Brick, Ashlar, Herringbone, Stagger	



Coordinating Products

Collective I Tile, Collective II Tile, Collective IV Tile, Collective V Tile, Hand in Hand Tile, Side by Side Tile, In Common Tile

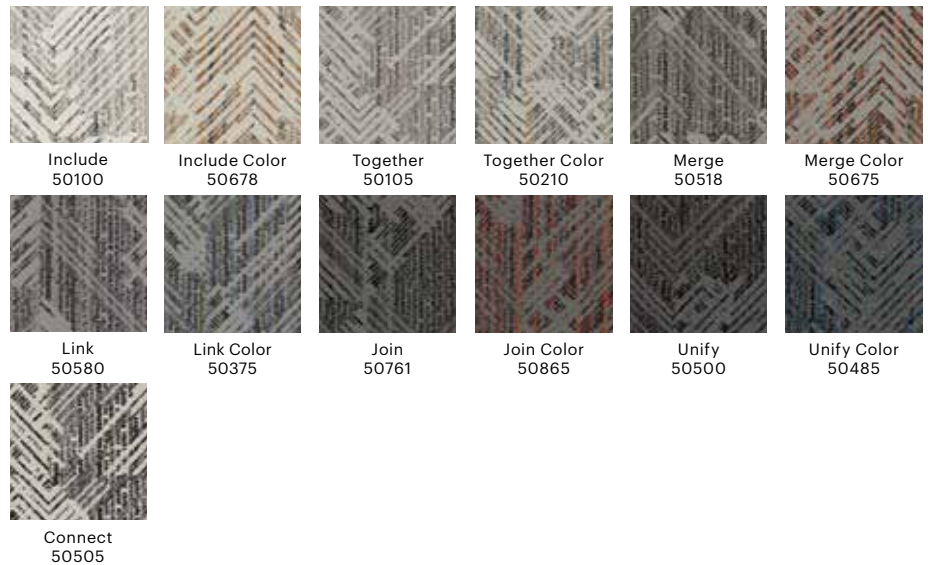
Hand In Hand Tile | Collective Phase 2



50100 Include

Product Specifications

Style Number	5T450	
Fibre	Eco Solution Q® Nylon	
Dye Method	100% Solution Dyed	
Tufted Weight	24 oz.	813.7 g/m2
Gauge	1/10	39.4/10 cm
Average Density	7448 ozs./yd³	8.65 kilotex
Product Size	18 in x 36 in	46 cm x 91 cm
Secondary Backing	EcoWorx® Tile	
Recommended Installation	Monolithic, Brick, Ashlar, Herringbone, Stagger	



Coordinating Products

Collective I Tile, Collective II Tile, Collective III Tile, Collective V Tile



50100 Include

Product Specifications

Style Number	5T451	
Fibre	Eco Solution Q® Nylon	
Dye Method	100% Solution Dyed	
Tufted Weight	22 oz.	745.9 g/m2
Gauge	1/10	39.4/10 cm
Average Density	8000 ozs./yd³	8.18 kilotex
Product Size	9 in x 36 in	22.9 cm x 91.4 cm
Secondary Backing	EcoWorx® Tile	
Recommended Installation	Monolithic, Brick, Ashlar, Herringbone, Stagger	



Coordinating Products

Collective I Tile, Collective II Tile, Collective III Tile, Collective IV Tile, Collective V Tile, Hand in Hand Tile, Side by Side Tile

Carpet Tile | Collection: Collective

Side By Side Tile | Collective Phase 2



50100 Include

Product Specifications

Style Number	5T452	
Fibre	Eco Solution Q® Nylon	
Dye Method	100% Solution Dyed	
Tufted Weight	24 oz.	813.7 g/m2
Gauge	1/10	39.4/10 cm
Average Density	6912 ozs./yd³	8.95 kilotex
Product Size	18 in x 36 in	46 cm x 91 cm
Secondary Backing	EcoWorx® Tile	
Recommended Installation	Monolithic, Brick, Ashlar, Herringbone, Stagger	



Coordinating Products

Collective I Tile, Collective II Tile, Collective III Tile, Collective IV Tile, Collective V Tile, Hand in Hand Tile, In Common Tile



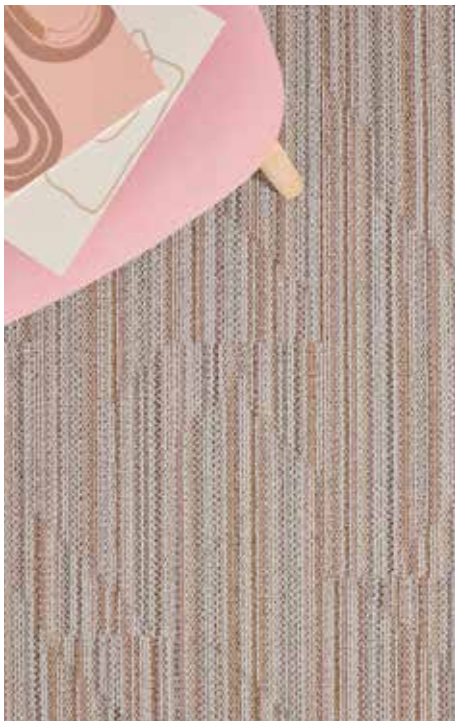
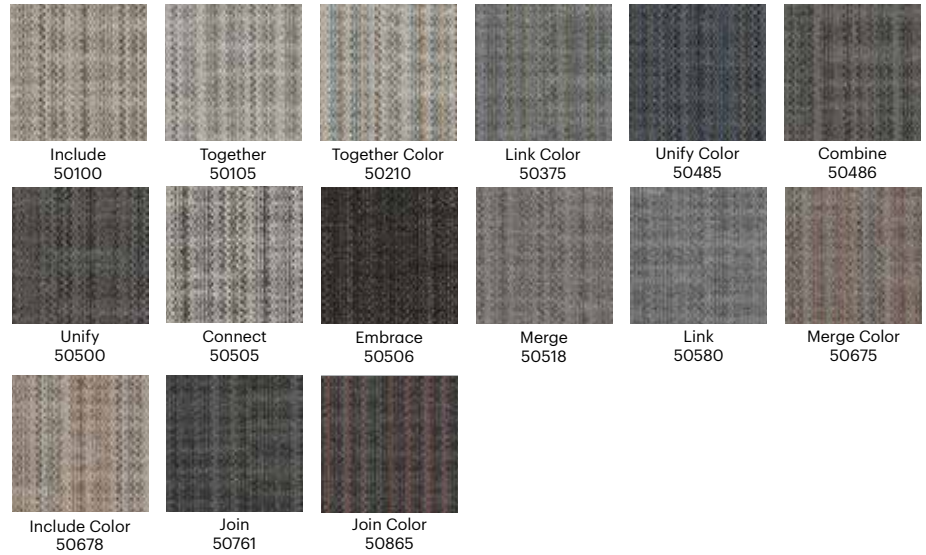
50678 Include Colour

Coordinating Products

Collective I Tile, Collective II Tile, Collective III Tile, Hand In Hand Tile, In Common Tile, Side By Side Tile, Alongside Tile, In Tune Tile

Product Specifications

Style Number	5T494	
Fibre	Eco Solution Q100™ Nylon	
Dye Method	100% Solution Dyed	
Tufted Weight	17 oz.	576.4 g/m ²
Gauge	1/12	47.2/10 cm
Average Density	6120 ozs./yd ³	0.226 g/cm ³
Product Size	9 in x 36 in	22.9 cm x 91.4 cm
Secondary Backing	EcoWorx®	
Recommended Installation	Monolithic, Ashlar, Brick, Herringbone, Stagger	



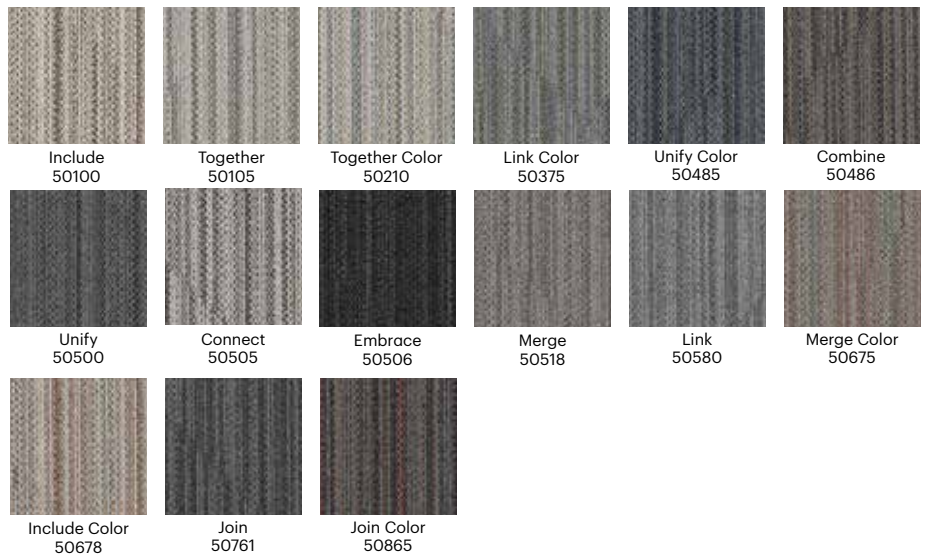
50678 Include Colour

Coordinating Products

Collective I Tile, Collective II Tile, Collective III Tile, Hand In Hand Tile, In Common Tile, Side By Side Tile, All Together Tile, In Tune Tile

Product Specifications

Style Number	5T494	
Fibre	Eco Solution Q100™ Nylon	
Dye Method	100% Solution Dyed	
Tufted Weight	17 oz.	576.4 g/m ²
Gauge	1/12	47.2/10 cm
Average Density	6120 ozs./yd ³	0.226 g/cm ³
Product Size	9 in x 36 in	22.9 cm x 91.4 cm
Secondary Backing	EcoWorx®	
Recommended Installation	Monolithic, Ashlar, Brick, Herringbone, Stagger	

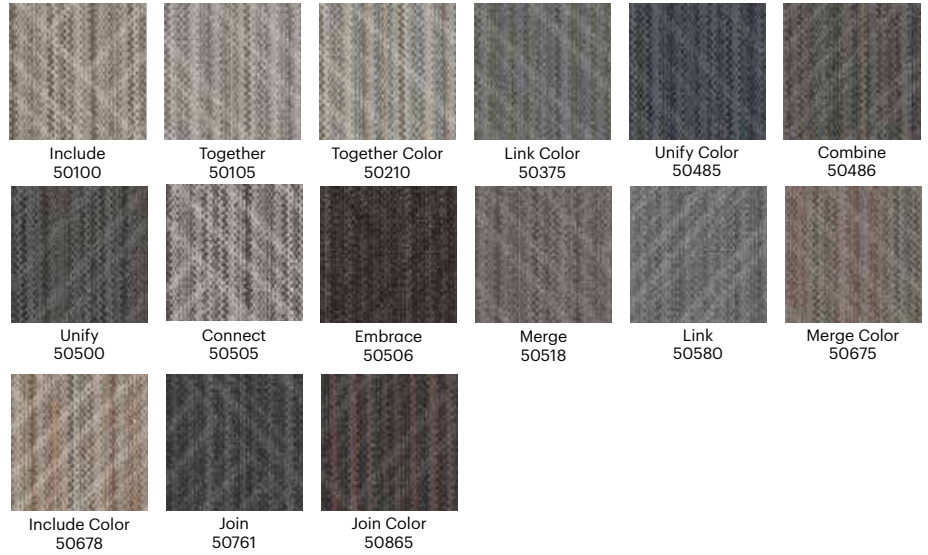




50678 Include Color

Product Specifications

Style Number	5T496	
Fibre	Eco Solution Q100™ Nylon	
Dye Method	100% Solution Dyed	
Tufted Weight	17 oz.	576.4 g/m ²
Gauge	1/12	47.2/10 cm
Average Density	6120 ozs./yd ³	0.226 g/cm ³
Product Size	9 in x 36 in	23 cm x 91 cm
Secondary Backing	EcoWorx® Tile	
Recommended Installation	Monolithic, Brick, Ashlar, Herringbone, Stagger	

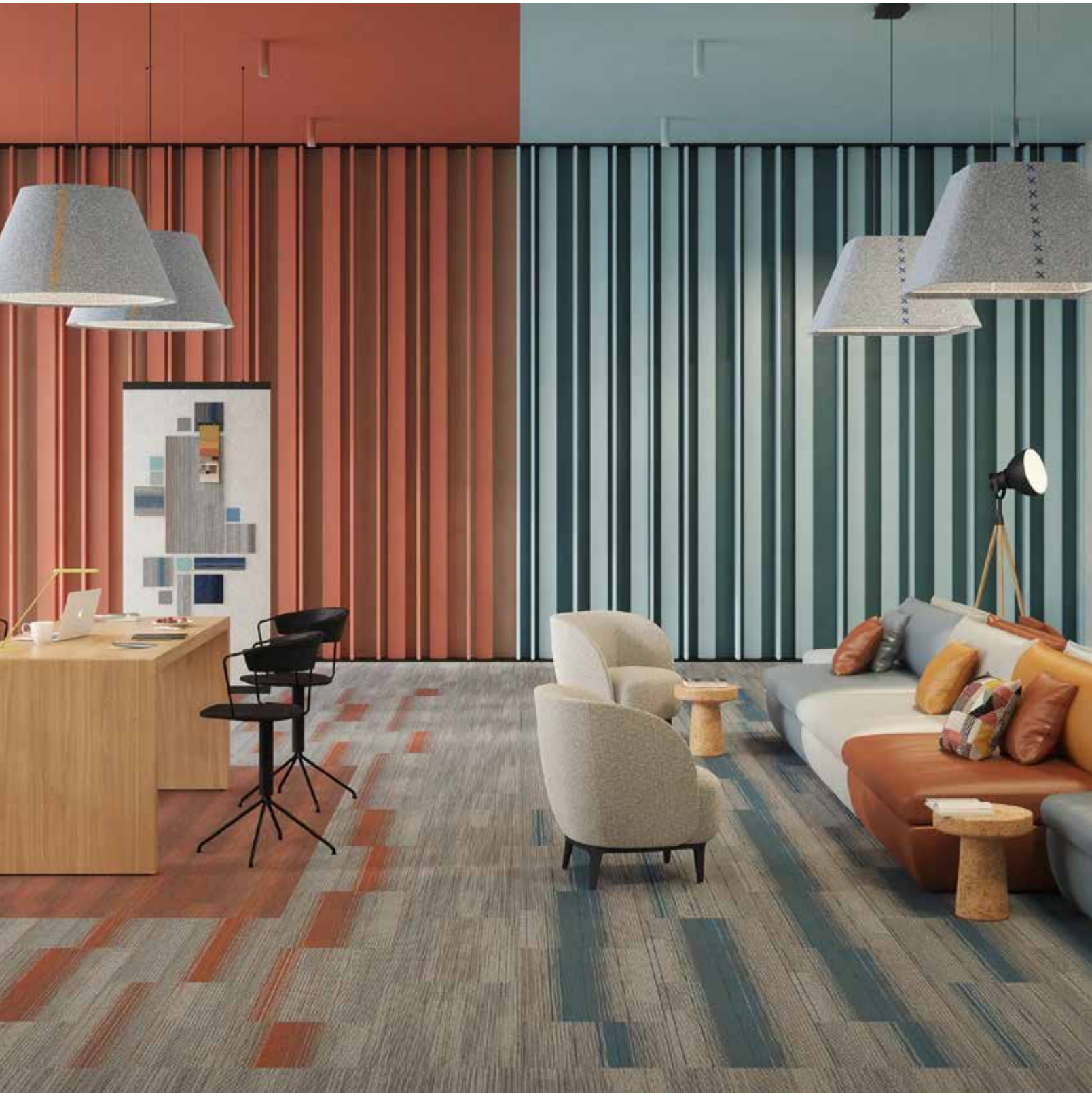


Coordinating Products

Collective I Tile, Collective II Tile, Collective III Tile, Collective V Tile

Color At Work II

Color at Work II is a system of colors and visuals designed to create collaborative zones within the spaces where we work, learn, heal and play. A flexible system of colors maintain a neutral base enhanced by multiple accent colors that work individually or built together in unison.





07518 Silver

Coordinating Products

Saturate Tile, Chromatone Tile

Product Specifications

Style Number	5T107	
Fibre	Eco Solution Q100™ Nylon	
Dye Method	100% Solution Dyed	
Tufted Weight	18 oz.	610.3 g/m ²
Gauge	1/12	47.2/10 cm
Average Density	6480 ozs./yd ³	11.09 kilotex
Product Size	18 in x 36 in	46 cm x 91 cm
Secondary Backing	EcoWorx® Tile	
Recommended Installation	Ashlar, Brick, Herringbone, Monolithic, Stagger, Basketweave, Half Basketweave, Boxed In	



Taupe
07515



Silver
07518



Charcoal
07555

Chromatone Tile | Color At Work II



07411 Cornflower Silver

Coordinating Products

Achromatic Tile, Saturate Tile

Product Specifications

Style Number	5T444	
Fibre	Eco Solution Q100™ Nylon	
Dye Method	100% Solution Dyed	
Tufted Weight	18 oz.	610.3 g/m ²
Gauge	1/12	47.2/10 cm
Average Density	6171 ozs./yd ³	0.228 g/cm ³
Product Size	18 in x 36 in	46 cm x 91 cm
Secondary Backing	EcoWorx® Tile	
Recommended Installation	Ashlar, Brick, Herringbone, Monolithic, Stagger, Basketweave, Half Basketweave	



Citron Taupe
07225



Chartreuse Silver
07325



Lime Taupe
07326



Aqua Silver
07327



Viridian Charcoal
07396



Cornflower Silver
07411



Cyan Charcoal
07436



Indigo Charcoal
07485



Orange Taupe
07669



Clay Silver
07675



Crimson Taupe
07850



Scarlet Charcoal
07854



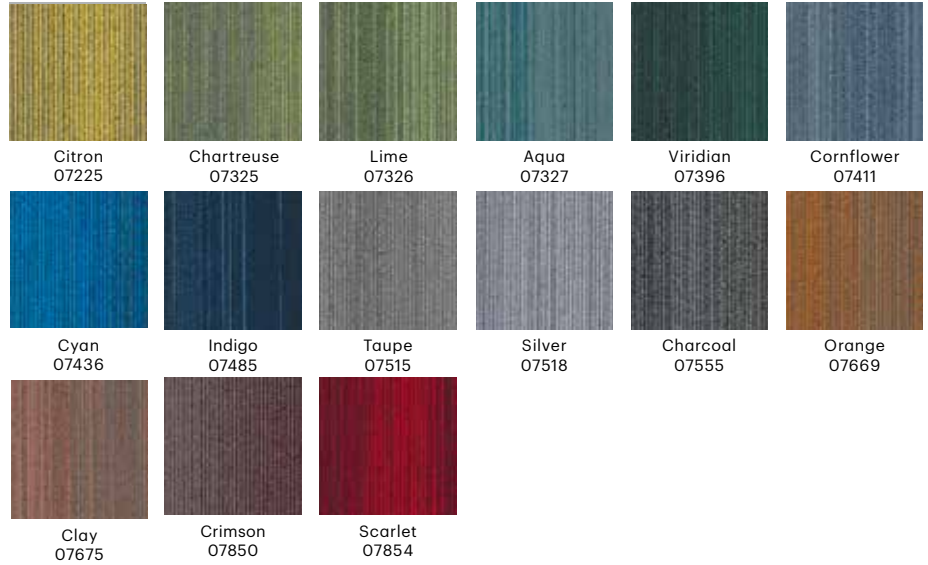
07518 Silver

Coordinating Products

Achromatic Tile, Chromatone Tile

Product Specifications

Style Number	5T109	
Fibre	Eco Solution Q100™ Nylon	
Dye Method	100% Solution Dyed	
Tufted Weight	18 oz.	610.3 g/m2
Gauge	1/12	47.2/10 cm
Average Density	6968 ozs./yd³	11.26 kilotex
Product Size	9 in x 36 in	23 cm x 91 cm
Secondary Backing	EcoWorx® Tile	
Recommended Installation	Ashlar, Brick, Herringbone, Monolithic, Stagger	



community

The Community collection was created to work together in harmony. Each of its four core products complements the others—with textured and plush carpet tile, broadloom available as rugs, and hard surface—giving designers unlimited choices to meet the demands of a new workplace.



Exchange



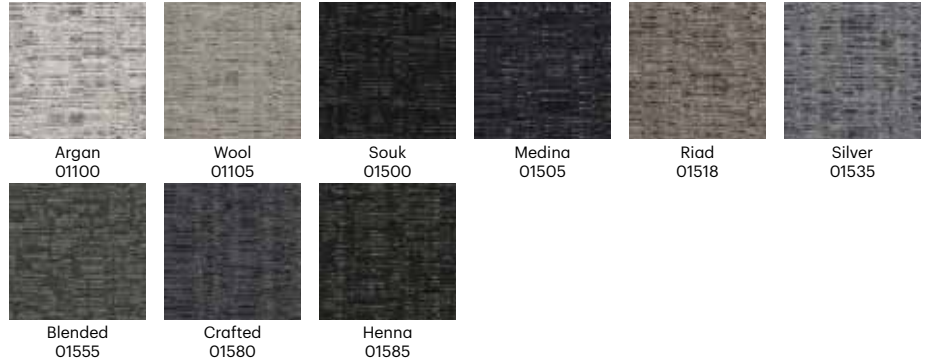
01100 Argan

Coordinating Products

Exchange Tile, Flat Weave Tile, Heddle Tile, Knotted Tile, Process Tile

Product Specifications

Style Number	5T303	
Fibre	Eco Solution Q100™ Nylon	
Dye Method	100% Solution Dyed	
Tufted Weight	28 oz.	949.4 g/m ²
Gauge	1/10	39.4/10 cm
Average Density	7099 ozs./yd ³	8.82 kilotex
Product Size	18 in x 36 in	45.7 cm x 91.4 cm
Secondary Backing	EcoWorx®	
Recommended Installation	Basketweave, Brick, Half Basketweave, Monolithic, Ashlar, Stagger, Herringbone	



Carpet Tile | Collection: Community

Exchange Tile | Community

Carpet Tile



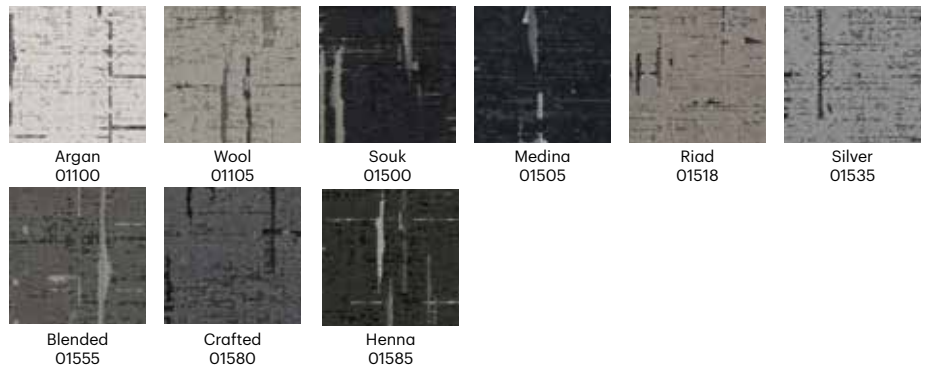
01100 Argan

Coordinating Products

Back Weave Tile, Flat Weave Tile, Heddle Tile, Knotted Tile, Process Tile

Product Specifications

Style Number	5T304	
Fibre	Eco Solution Q100™ Nylon	
Dye Method	100% Solution Dyed	
Tufted Weight	28 oz.	949.4 g/m ²
Gauge	1/10	39.4/10 cm
Average Density	7000 ozs./yd ³	0.26 kilotex
Product Size	18 in x 36 in	45.7 cm x 91.4 cm
Secondary Backing	EcoWorx®	
Recommended Installation	Basketweave, Boxed In, Brick, Half Basketweave, Monolithic, Ashlar, Stagger	





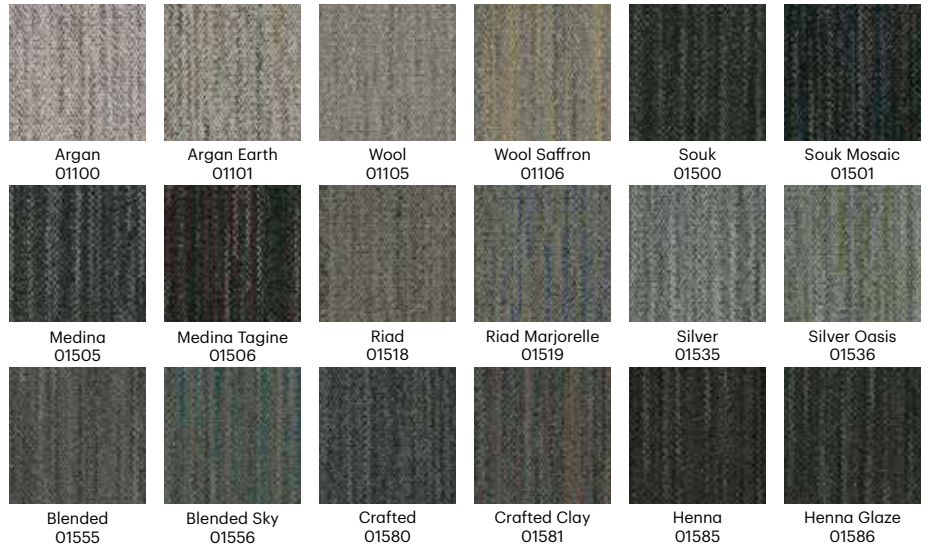
01100 Argan

Coordinating Products

Back Weave Tile, Exchange Tile, Heddle Tile, Knotted Tile, Process Tile

Product Specifications

Style Number	5T321	
Fibre	Eco Solution Q100™ Nylon	
Dye Method	100% Solution Dyed	
Tufted Weight	20 oz.	678.1 g/m ²
Gauge	1/12	47.2/10 cm
Average Density	6792 ozs./yd ³	9.54 kilotex
Product Size	9 in x 36 in	22.9 cm x 91.4 cm
Secondary Backing	EcoWorx®	
Recommended Installation	Monolithic, Brick, Ashlar, Herringbone, Stagger	



Heddle Tile | Community



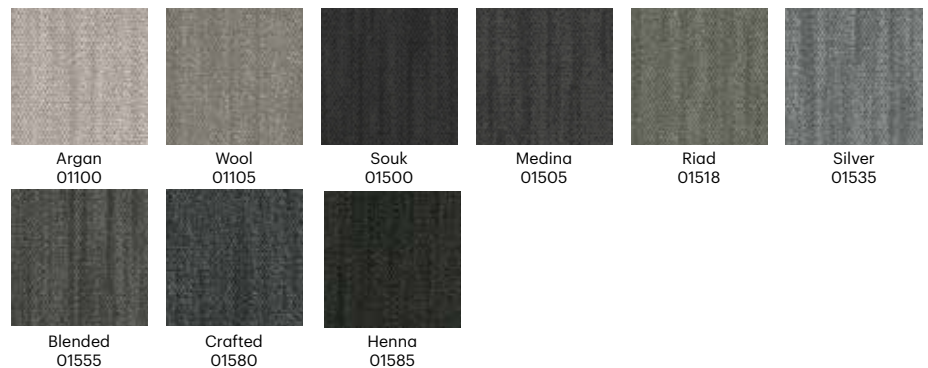
01105 Wool

Coordinating Products

Back Weave Tile, Exchange Tile, Flat Weave Tile, Knotted Tile, Process Tile

Product Specifications

Style Number	5T320	
Fibre	Eco Solution Q100™ Nylon	
Dye Method	100% Solution Dyed	
Tufted Weight	20 oz.	678.1 g/m ²
Gauge	1/12	47.2/10 cm
Average Density	6792 ozs./yd ³	9.49 kilotex
Product Size	9 in x 36 in	22.9 cm x 91.4 cm
Secondary Backing	EcoWorx®	
Recommended Installation	Monolithic, Brick, Ashlar, Herringbone, Stagger	





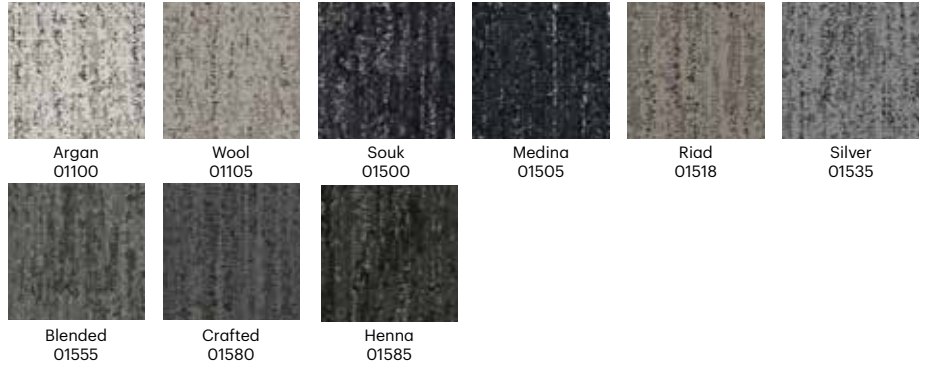
01100 Argan

Coordinating Products

Back Weave Tile, Exchange Tile, Flat Weave Tile, Heddle Tile, Process Tile

Product Specifications

Style Number	5T301	
Fibre	Eco Solution Q100™ Nylon	
Dye Method	100% Solution Dyed	
Tufted Weight	28 oz.	949.4 g/m ²
Gauge	1/10	39.4/10 cm
Average Density	7695 ozs./yd ³	8.81 kilotex
Product Size	18 in x 36 in	45.7 cm x 91.4 cm
Secondary Backing	EcoWorx®	
Recommended Installation	Basketweave, Boxed In, Brick, Half Basketweave, Monolithic, Ashlar, Stagger	



Carpet Tile | Collection: Community



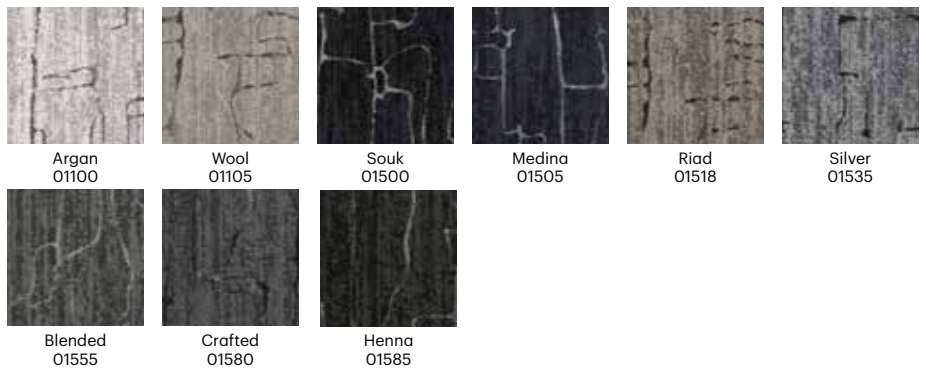
01100 Argan

Coordinating Products

Back Weave Tile, Exchange Tile, Flat Weave Tile, Heddle Tile, Knotted Tile

Product Specifications

Style Number	5T302	
Fibre	Eco Solution Q100™ Nylon	
Dye Method	100% Solution Dyed	
Tufted Weight	28 oz.	949.4 g/m ²
Gauge	1/10	39.4/10 cm
Average Density	7754 ozs./yd ³	8.85 kilotex
Product Size	18 in x 36 in	45.7 cm x 91.4 cm
Secondary Backing	EcoWorx®	
Recommended Installation	Basketweave, Boxed In, Brick, Half Basketweave, Monolithic, Ashlar, Stagger	



Haven

Traditional wisdom tells us there's no place like home. It's a universal truth. But what if home was not simply a place but a state of mind? The Haven collection reimagines home as a mood, an idea, a quality of comfort and familiarity that feeds our instinctual desire to feel grounded in the world.





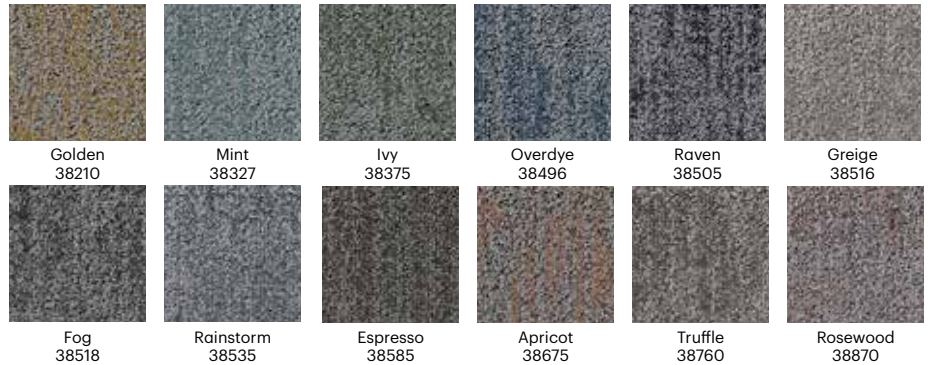
38518 Fog + 38675 Apricot

Coordinating Products

Familiar Tile, Honest Tile, Identity Tile, Nest Tile, Shelter Tile

Product Specifications

Style Number	5T239	
Fibre	Eco Solution Q100™ Nylon	
Dye Method	100% Solution Dyed	
Tufted Weight	22 oz.	746.0 g/m ²
Gauge	1/12	47.2/10 cm
Average Density	6492 ozs./yd ³	11.54 kilotex
Product Size	9 in x 36 in	22.9 cm x 91.4 cm
Secondary Backing	EcoWorx®	
Recommended Installation	Monolithic, Brick, Ashlar, Stagger, Herringbone	



Carpet Tile | Collection: Haven

Familiar Tile | Haven



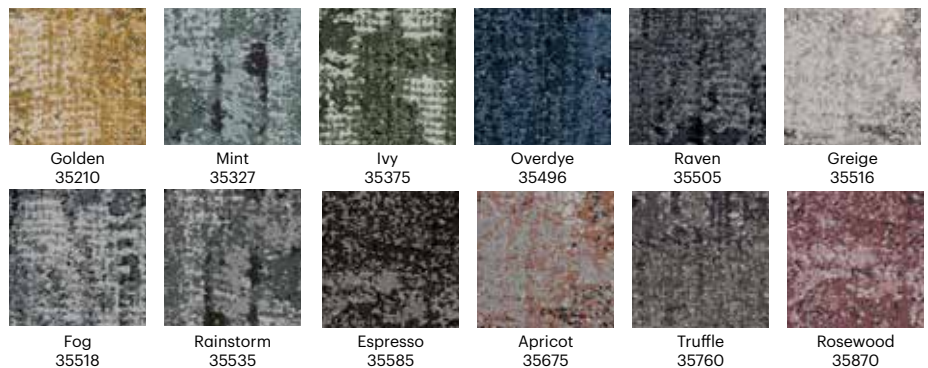
35516 Greige

Coordinating Products

Dwelling Tile, Honest Tile, Identity Tile, Nest Tile, Shelter Tile

Product Specifications

Style Number	5T235	
Fibre	Eco Solution Q100™ Nylon	
Dye Method	100% Solution Dyed	
Tufted Weight	28 oz.	949.4 g/m ²
Gauge	1/10	39.4/10 cm
Average Density	8195 ozs./yd ³	8.00 kilotex
Product Size	9 in x 36 in	22.9 cm x 91.4 cm
Secondary Backing	EcoWorx®	
Recommended Installation	Monolithic, Ashlar, Brick, Stagger, Herringbone	





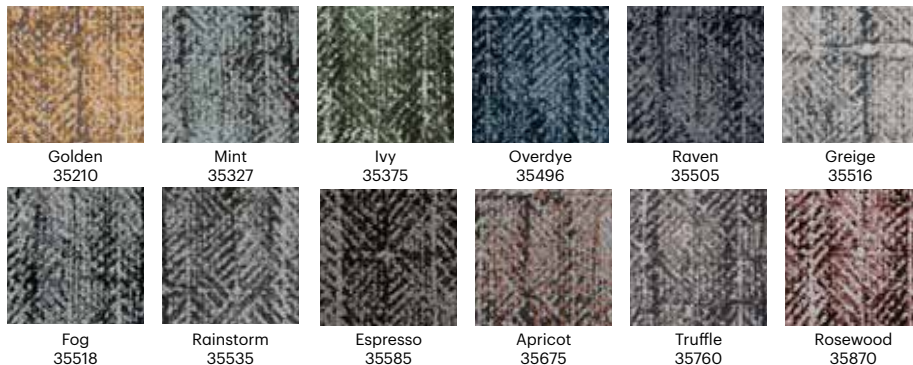
35870 Rosewood

Coordinating Products

Dwelling Tile, Familiar Tile, Identity Tile, Nest Tile, Shelter Tile

Product Specifications

Style Number	5T236	
Fibre	Eco Solution Q100™ Nylon	
Dye Method	100% Solution Dyed	
Tufted Weight	28 oz.	949.4 g/m ²
Gauge	1/10	39.4/10 cm
Average Density	10,500 ozs./yd ³	7.67 kilotex
Product Size	9 in x 36 in	22.9 cm x 91.4 cm
Secondary Backing	EcoWorx®	
Recommended Installation	Monolithic, Brick, Ashlar, Herringbone, Stagger	



35496 Overdye

Coordinating Products

Dwelling Tile, Familiar Tile, Honest Tile, Nest Tile, Shelter Tile

Product Specifications

Style Number	5T237	
Fibre	Eco Solution Q100™ Nylon	
Dye Method	100% Solution Dyed	
Tufted Weight	26 oz.	881.6 g/m ²
Gauge	1/10	39.4/10 cm
Average Density	6933 ozs./yd ³	7.67 kilotex
Product Size	9 in x 36 in	22.9 cm x 91.4 cm
Secondary Backing	EcoWorx®	
Recommended Installation	Monolithic, Brick, Ashlar, Herringbone, Stagger	





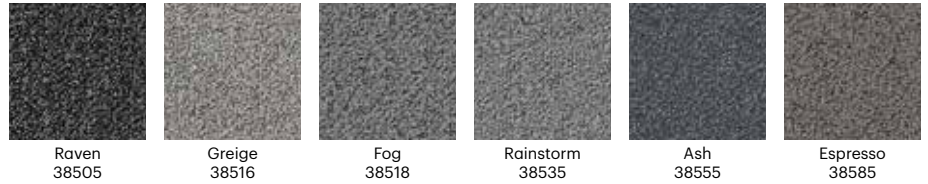
38518 Fog

Coordinating Products

Dwelling Tile, Familiar Tile, Honest Tile, Identity Tile, Shelter Tile

Product Specifications

Style Number	5T238	
Fibre	Eco Solution Q100™ Nylon	
Dye Method	100% Solution Dyed	
Tufted Weight	24 oz.	813.8 g/m ²
Gauge	1/12	47.2/10 cm
Average Density	6803 ozs./yd ³	13.91 kilotex
Product Size	9 in x 36 in	22.9 cm x 91.4 cm
Secondary Backing	EcoWorx®	
Recommended Installation	Monolithic, Ashlar, Brick, Stagger, Herringbone	



Carpet Tile | Collection: Haven

Shelter Tile | Haven



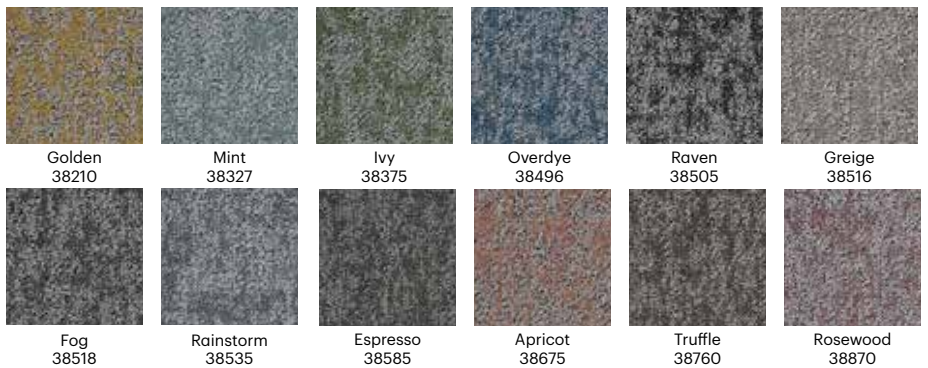
38870 Rosewood

Coordinating Products

Dwelling Tile, Familiar Tile, Honest Tile, Identity Tile, Nest Tile

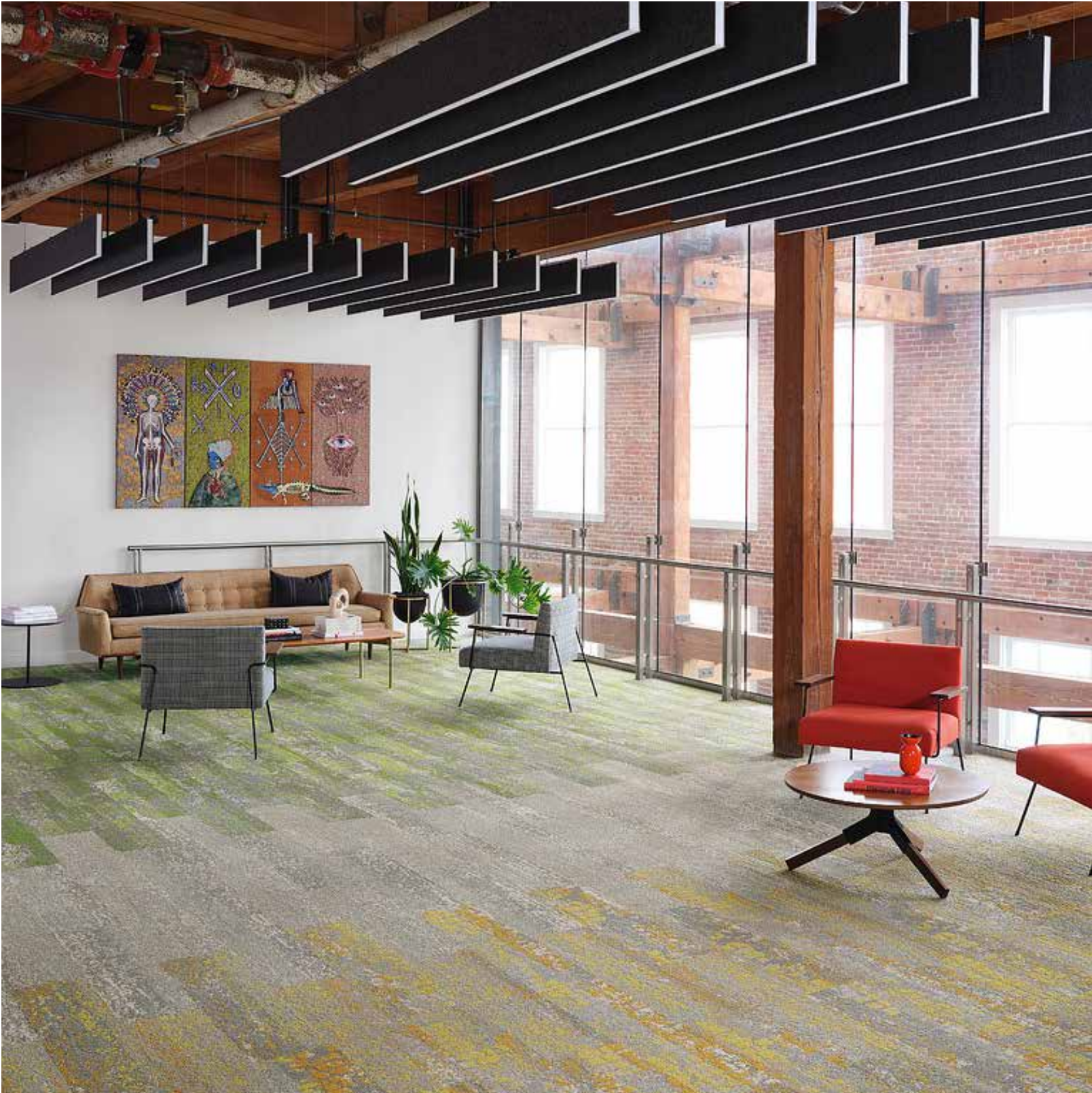
Product Specifications

Style Number	5T240	
Fibre	Eco Solution Q100™ Nylon	
Dye Method	100% Solution Dyed	
Tufted Weight	22 oz.	746.0 g/m ²
Gauge	1/12	47.2/10 cm
Average Density	6092 ozs./yd ³	11.37 kilotex
Product Size	9 in x 36 in	22.9 cm x 91.4 cm
Secondary Backing	EcoWorx®	
Recommended Installation	Monolithic, Brick, Ashlar, Herringbone, Stagger	



Living Systems

Step into a space designed to engage, evolve, and revitalise the senses. Regenerative design influences this system-led collection with organic and textural aesthetics. Living Systems mirrors nature, responds to be adaptive, transforms outlooks, and co-creates a living system for all interior spaces.



Transform Colour + Observe Colour + Observe



05105 Optimistic + 05761 Mountain

Coordinating Products

Endless Tile, Observe Tile, Observe Color Tile, Respond Tile, Respond Color Tile, Source Tile, Transform Color Tile, Transform Tile

Product Specifications

Style Number	5T314	
Fibre	Eco Solution Q100™ Nylon	
Dye Method	100% Solution Dyed	
Tufted Weight	17 oz.	567.4 g/m ²
Gauge	1/10	39.4/10 cm
Average Density	7373 ozs./yd ³	8.47 kilotex
Product Size	9 in x 36 in	22.9 cm x 91.4 cm
Secondary Backing	EcoWorx®	
Recommended Installation	Monolithic, Brick, Ashlar, Herringbone, Stagger	



Carpet Tile | Collection: Living Systems

Endless Tile | Living Systems

Carpet Tile



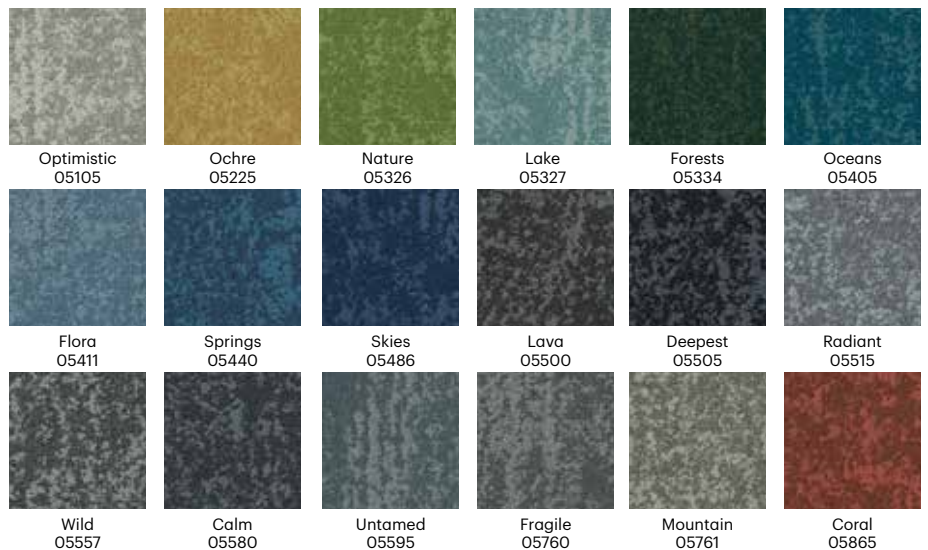
05515 Radiant

Coordinating Products

Boundless Tile, Observe Tile, Observe Color Tile, Respond Tile, Respond Color Tile, Source Tile, Transform Color Tile, Transform Tile

Product Specifications

Style Number	5T305	
Fibre	Eco Solution Q100™ Nylon	
Dye Method	100% Solution Dyed	
Tufted Weight	22 oz.	745.9 g/m ²
Gauge	1/10	39.4/10 cm
Average Density	8703 ozs./yd ³	7.17 kilotex
Product Size	9 in x 36 in	22.9 cm x 91.4 cm
Secondary Backing	EcoWorx®	
Recommended Installation	Monolithic, Brick, Ashlar, Herringbone, Stagger	

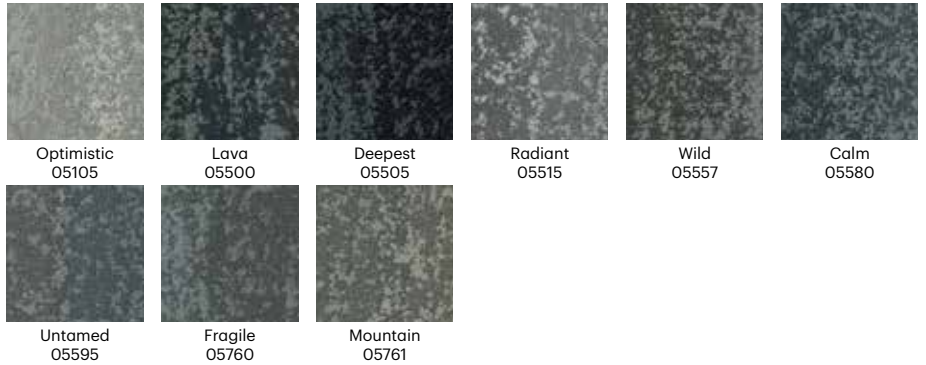




05515 Radiant

Product Specifications

Style Number	5T306	
Fibre	Eco Solution Q100™ Nylon	
Dye Method	100% Solution Dyed	
Tufted Weight	22 oz.	746.0 g/m ²
Gauge	1/10	39.4/10 cm
Average Density	9103 ozs./yd ³	7.25 kilotex
Product Size	9 in x 36 in	22.9 cm x 91.4 cm
Secondary Backing	EcoWorx®	
Recommended Installation	Monolithic, Brick, Ashlar, Herringbone, Stagger	



Coordinating Products

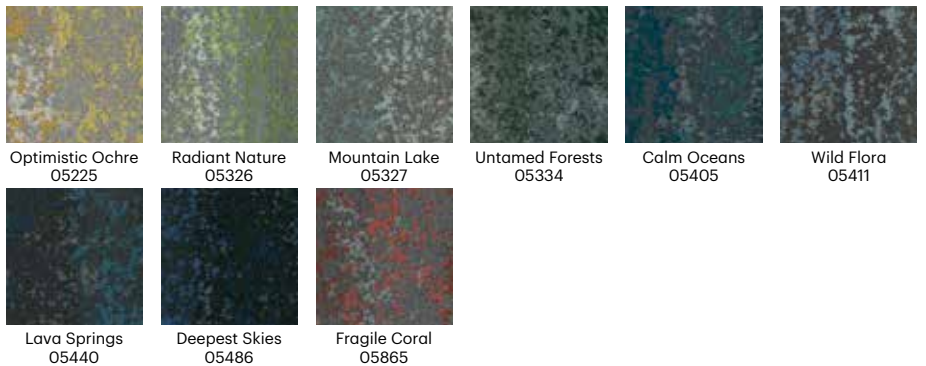
Boundless Tile, Endless Tile, Observe Color Tile, Respond Tile, Respond Color Tile, Source Tile, Transform Tile, Transform Color Tile



05326 Radiant Nature

Product Specifications

Style Number	5T309	
Fibre	Eco Solution Q100™ Nylon	
Dye Method	100% Solution Dyed	
Tufted Weight	24 oz.	813.8 g/m ²
Gauge	1/10	39.4/10 cm
Average Density	8907 ozs./yd ³	7.33 kilotex
Product Size	9 in x 36 in	22.9 cm x 91.4 cm
Secondary Backing	EcoWorx®	
Recommended Installation	Random, Monolithic, Quarter Turn, Ashlar, Brick	



Coordinating Products

Boundless Tile, Endless Tile, Observe Color Tile, Respond Tile, Respond Color Tile, Source Tile, Transform Tile, Transform Color Tile



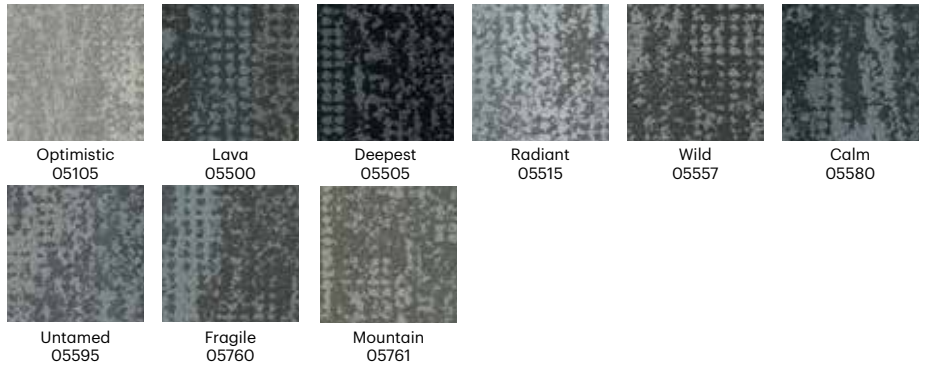
05761 Mountain

Coordinating Products

Boundless Tile, Endless Tile, Observe Tile, Observe Color Tile, Respond Color Tile, Source Tile, Transform Tile, Transform Color Tile

Product Specifications

Style Number	5T307	
Fibre	Eco Solution Q100™ Nylon	
Dye Method	100% Solution Dyed	
Tufted Weight	22 oz.	746.0 g/m ²
Gauge	1/10	39.4/10 cm
Average Density	7920 ozs./yd ³	7.26 kilotex
Product Size	9 in x 36 in	22.9 cm x 91.4 cm
Secondary Backing	EcoWorx®	
Recommended Installation	Monolithic, Brick, Ashlar, Herringbone, Stagger	



Carpet Tile | Collection: Living Systems

Respond Color Tile | District



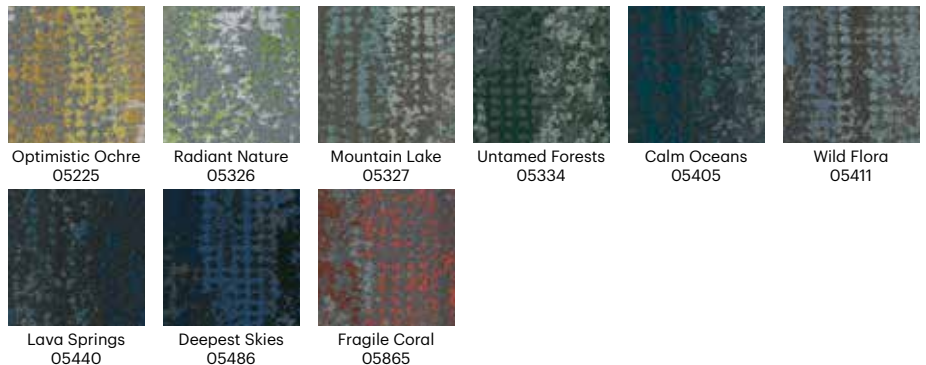
05865 Fragile Coral

Coordinating Products

Boundless Tile, Endless Tile, Observe Tile, Observe Color Tile, Respond Tile, Source Tile, Transform Tile, Transform Color Tile

Product Specifications

Style Number	5T310	
Fibre	Eco Solution Q100™ Nylon	
Dye Method	100% Solution Dyed	
Tufted Weight	24 oz.	813.8 g/m ²
Gauge	1/10	39.4/10 cm
Average Density	8151 ozs./yd ³	7.33 kilotex
Product Size	9 in x 36 in	22.9 cm x 91.4 cm
Secondary Backing	EcoWorx®	
Recommended Installation	Monolithic, Brick, Ashlar, Herringbone, Stagger	





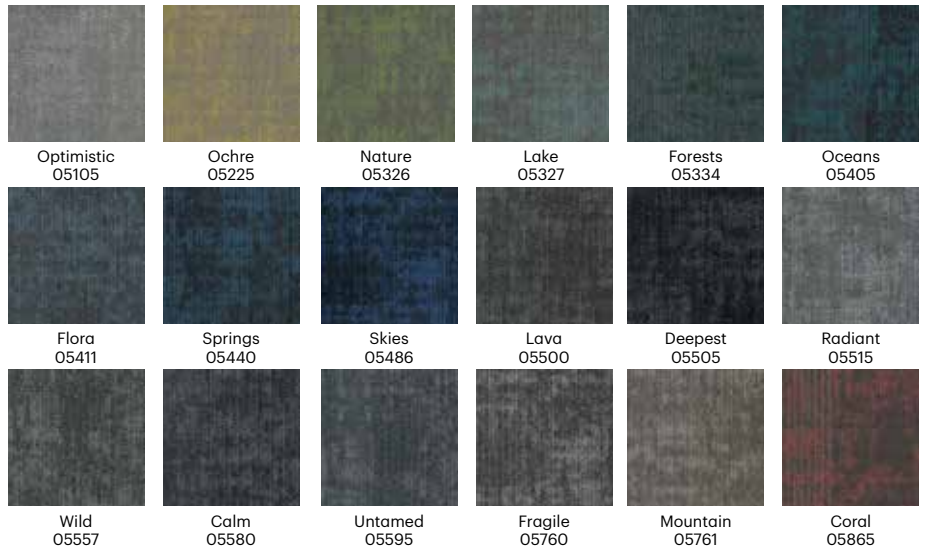
05105 Optimistic + 05761 Mountain

Coordinating Products

Boundless Tile, Observe Tile, Observe Color Tile, Respond Tile, Respond Color Tile, Source Tile, Transform Color Tile, Transform Tile

Product Specifications

Style Number	5T315	
Fibre	Eco Solution Q100™ Nylon	
Dye Method	100% Solution Dyed	
Tufted Weight	17 oz.	567.4 g/m ²
Gauge	1/10	39.4/10 cm
Average Density	9000 ozs./yd ³	7.33 kilotex
Product Size	9 in x 36 in	22.9 cm x 91.4 cm
Secondary Backing	EcoWorx®	
Recommended Installation	Monolithic, Brick, Ashlar, Herringbone, Stagger	



Transform Tile | Living Systems



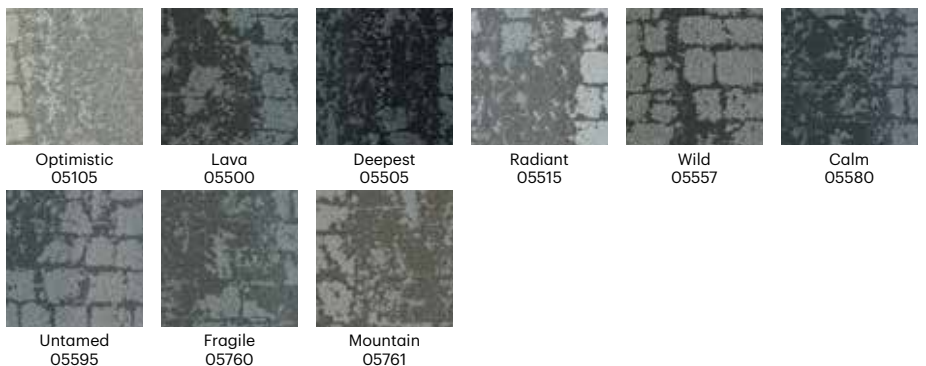
05515 Radiant

Coordinating Products

Boundless Tile, Endless Tile, Observe Tile, Observe Colour Tile, Respond Tile, Respond Color Tile, Source Tile, Transform Color Tile

Product Specifications

Style Number	5T308	
Fibre	Eco Solution Q100™ Nylon	
Dye Method	100% Solution Dyed	
Tufted Weight	22 oz.	745.9 g/m ²
Gauge	1/10	39.4/10 cm
Average Density	6439 ozs./yd ³	7.25 kilotex
Product Size	9 in x 36 in	22.9 cm x 91.4 cm
Secondary Backing	EcoWorx®	
Recommended Installation	Monolithic, Brick, Ashlar, Herringbone, Stagger	





05865 Fragile Coral

Product Specifications

Style Number	5T311	
Fibre	Eco Solution Q100™ Nylon	
Dye Method	100% Solution Dyed	
Tufted Weight	24 oz.	813.7 g/m ²
Gauge	1/10	39.4/10 cm
Average Density	9000 ozs./yd ³	7.33 kilotex
Product Size	9 in x 36 in	22.9 cm x 91.4 cm
Secondary Backing	EcoWorx®	
Recommended Installation	Monolithic, Brick, Ashlar, Herringbone, Stagger	



Optimistic Ochre
05225



Radiant Nature
05326



Mountain Lake
05327



Untamed Forests
05334



Calm Oceans
05405



Wild Flora
05411



Lava Springs
05440



Deepest Skies
05486



Fragile Coral
05865

Coordinating Products

Boundless Tile, Endless Tile, Observe Tile, Observe Colour Tile, Respond Tile, Respond Color Tile, Source Tile, Transform Tile

Teamwork

What makes teams work? When each person brings their unique talents, ideas and strengths to the team, that's when the real magic happens. With clarity and understanding, a team can move quickly with a united sense of purpose. The same can be said for the Teamwork collection. When the individual styles come together, the collective impact deeply resonates to connect, energize, and create a sense of movement and direction.





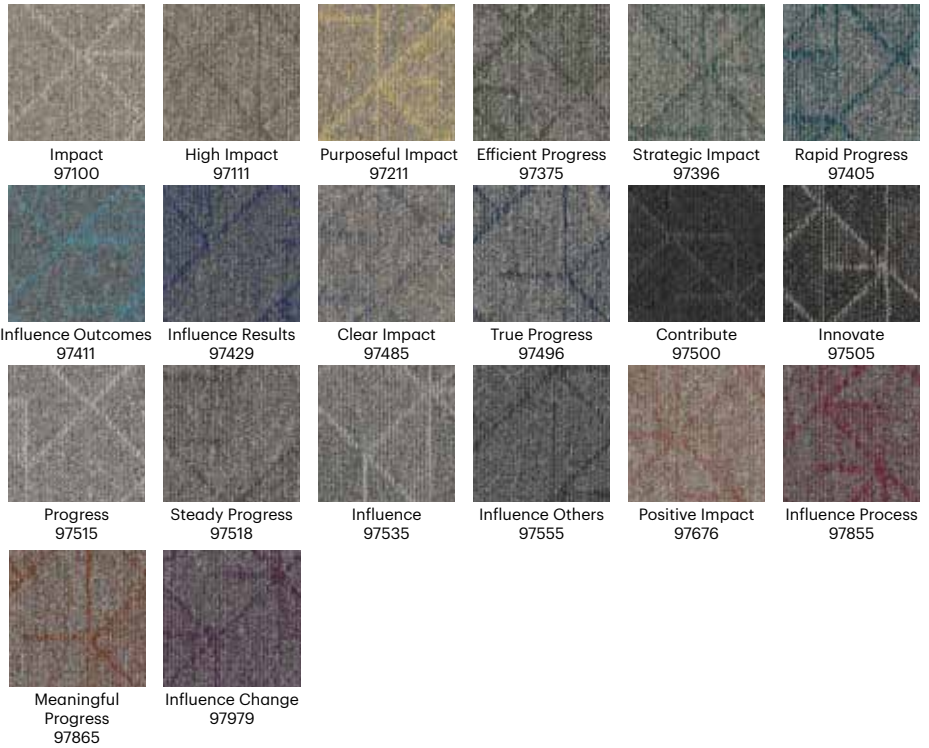
97518 Steady Progress

Coordinating Products

Huddle Tile, Kickoff Tile, Follow-Up Tile

Product Specifications

Style Number	5T497	
Fibre	Eco Solution Q100™ Nylon	
Dye Method	100% Solution Dyed	
Tufted Weight	18 oz.	610.3 g/m ²
Gauge	1/12	47.2/10 cm
Average Density	5735 ozs./yd ³	10.6 kilotex
Product Size	9 in x 36 in	23 cm x 91 cm
Secondary Backing	EcoWorx®	
Recommended Installation	Monolithic, Brick, Ashlar, Herringbone, Stagger	



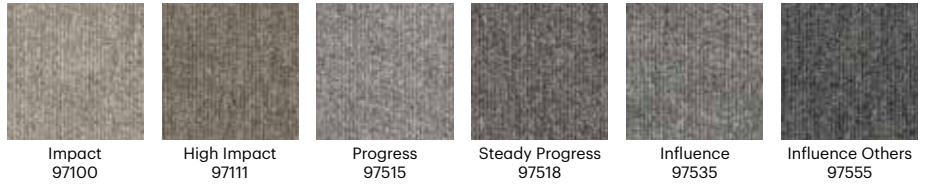


97518 Steady Progress

Coordinating Products
 Collaboration Tile, Huddle Tile, Kickoff Tile

Product Specifications

Style Number	5T500	
Fibre	Eco Solution Q100™ Nylon	
Dye Method	100% Solution Dyed	
Tufted Weight	18 oz.	610.3 g/m ²
Gauge	1/12	47.2/10 cm
Average Density	5735 ozs./yd ³	10.6 kilotex
Product Size	9 in x 36 in	23 cm x 91 cm
Secondary Backing	EcoWorx®	
Recommended Installation	Monolithic, Brick, Ashlar, Herringbone, Stagger	

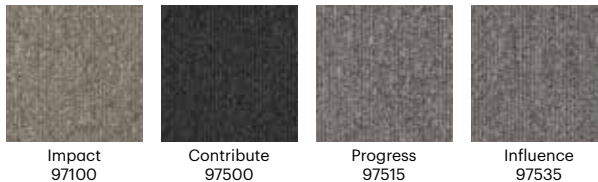


97515 Progress

Coordinating Products
 Collaboration Tile, Kickoff Tile, Follow-Up Tile

Product Specifications

Style Number	5T498	
Fibre	Eco Solution Q100™ Nylon	
Dye Method	100% Solution Dyed	
Tufted Weight	18 oz.	610.3 g/m ²
Gauge	1/12	47.2/10 cm
Average Density	6113 ozs./yd ³	11.16 kilotex
Product Size	9 in x 36 in	23 cm x 91 cm
Secondary Backing	EcoWorx®	
Recommended Installation	Monolithic, Brick, Ashlar, Herringbone, Stagger	





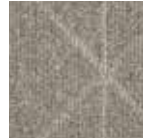
97518 Steady Progress

Coordinating Products

Collaboration Tile, Huddle Tile, Follow-Up Tile

Product Specifications

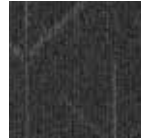
Style Number	5T499	
Fibre	Eco Solution Q100™ Nylon	
Dye Method	100% Solution Dyed	
Tufted Weight	18 oz.	610.3 g/m ²
Gauge	1/12	47.2/10 cm
Average Density	5735 ozs./yd ³	10.98 kilotex
Product Size	9 in x 36 in	23 cm x 91 cm
Secondary Backing	EcoWorx®	
Recommended Installation	Monolithic, Brick, Ashlar, Herringbone, Stagger	



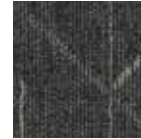
Impact
97100



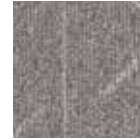
High Impact
97111



Contribute
97500



Innovate
97505



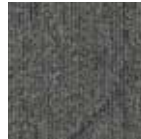
Progress
97515



Steady Progress
97518



Influence
97535



Influence Others
97555

West Elm + Shaw Contract

West Elm + Shaw Contract is a collection that embraces the warmth and comfort of home wherever you may be. It combines the handcrafted sensibility of natural materials and textiles with the utmost durability and sustainability that commercial environments demand. West Elm style meets Shaw Contract performance.

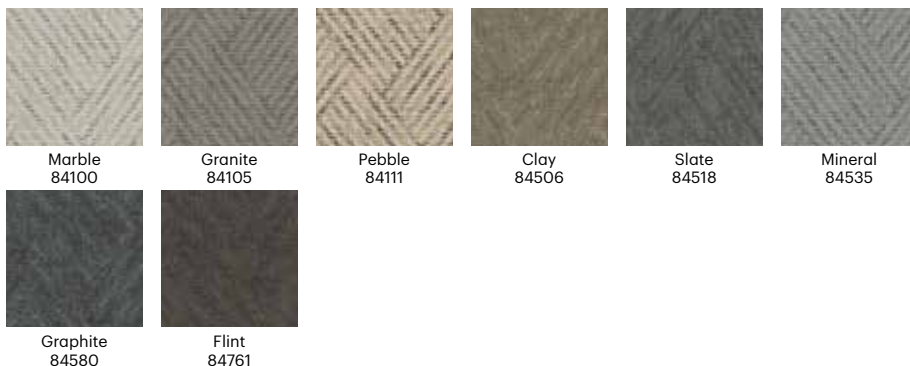




84111 Pebble

Product Specifications

Style Number	5T485	
Fibre	Eco Solution Q100™ Nylon	
Dye Method	100% Solution Dyed	
Tufted Weight	27 oz.	915.5 g/m ²
Gauge	1/10	39.4/10 cm
Average Density	5820 ozs./yd ³	0.215 g/cm ³
Product Size	24 in x 24 in	61.0 cm x 61.0 cm
Secondary Backing	EcoWorx®	
Recommended Installation	Monolithic, Quarter Turn, Brick, Ashlar, Random	



Coordinating Products

Stonework Tile, Grit Tile, Zest Tile, Zeal Tile, Spark Tile

Carpet Tile | Collection: West Elm

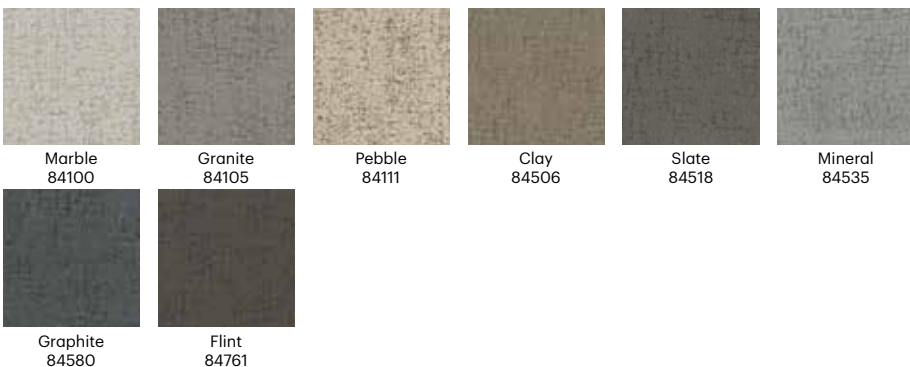
Grit Tile | West Elm



84111 Pebble

Product Specifications

Style Number	5T486	
Fibre	Eco Solution Q100™ Nylon	
Dye Method	100% Solution Dyed	
Tufted Weight	27 oz.	915.5 g/m ²
Gauge	1/10	39.4/10 cm
Average Density	5820 ozs./yd ³	0.215 g/cm ³
Product Size	24 in x 24 in	61.0 cm x 61.0 cm
Secondary Backing	EcoWorx®	
Recommended Installation	Monolithic, Quarter Turn, Brick, Ashlar, Random	



Coordinating Products

Stonework Tile, Chisel Tile, Zest Tile, Zeal Tile, Spark Tile



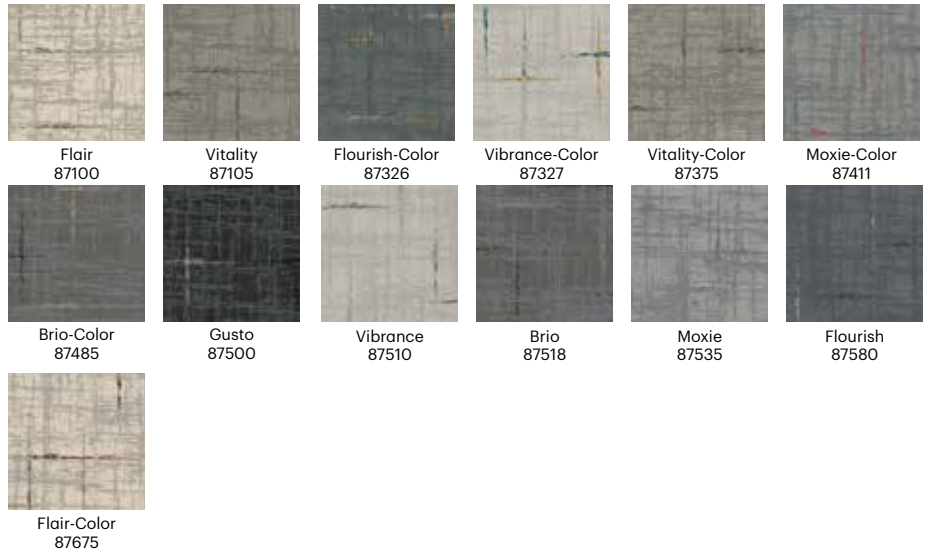
87327 Vibrance-Color

Coordinating Products

Stonework Tile, Chisel Tile, Grit Tile, Zest Tile, Zeal Tile

Product Specifications

Style Number	5T489	
Fibre	Eco Solution Q100™ Nylon	
Dye Method	100% Solution Dyed	
Tufted Weight	26 oz.	881.5 g/m ²
Gauge	1/10	39.4/10 cm
Average Density	6545 ozs./yd ³	0.242 g/cm ³
Product Size	24 in x 24 in	61.0 cm x 61.0 cm
Secondary Backing	EcoWorx®	
Recommended Installation	Monolithic, Quarter Turn, Brick, Ashlar, Random	



Stonework Tile | West Elm



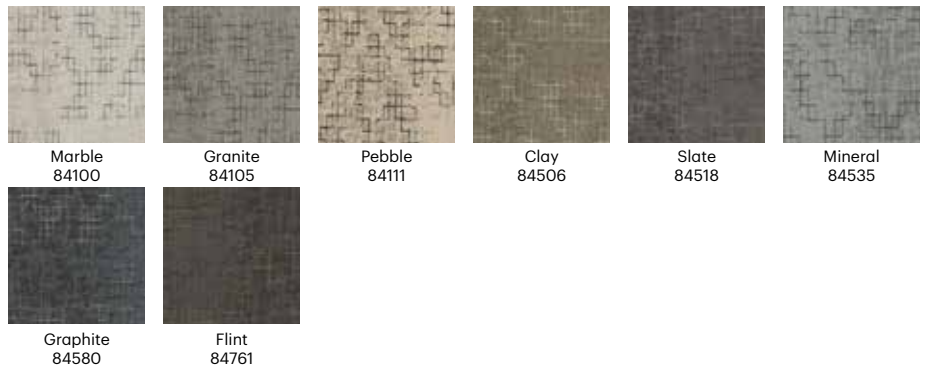
84111 Pebble

Coordinating Products

Chisel Tile, Grit Tile, Zest Tile, Zeal Tile, Spark Tile

Product Specifications

Style Number	5T484	
Fibre	Eco Solution Q100™ Nylon	
Dye Method	100% Solution Dyed	
Tufted Weight	27 oz.	915.5 g/m ²
Gauge	1/10	39.4/10 cm
Average Density	6395 ozs./yd ³	0.237 g/cm ³
Product Size	24 in x 24 in	61.0 cm x 61.0 cm
Secondary Backing	EcoWorx®	
Recommended Installation	Monolithic, Quarter Turn, Brick, Ashlar, Random	





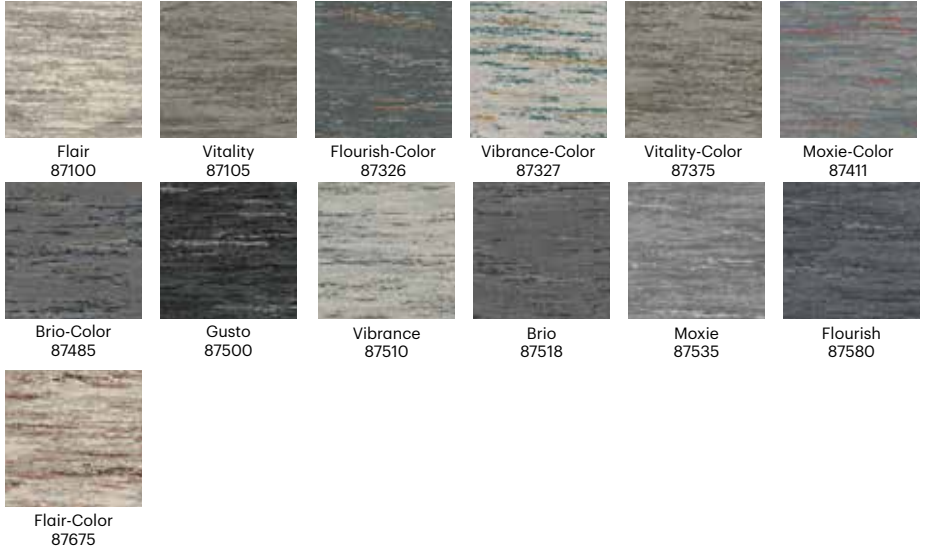
87327 Vibrance-Color

Coordinating Products

Stonework Tile, Chisel Tile, Grit Tile, Zest Tile, Spark Tile

Product Specifications

Style Number	5T488	
Fibre	Eco Solution Q100™ Nylon	
Dye Method	100% Solution Dyed	
Tufted Weight	26 oz.	881.5 g/m ²
Gauge	1/10	39.4/10 cm
Average Density	5442 ozs./yd ³	0.201 g/cm ³
Product Size	24 in x 24 in	61.0 cm x 61.0 cm
Secondary Backing	EcoWorx®	
Recommended Installation	Monolithic, Quarter Turn, Brick, Ashlar, Random	



Carpet Tile | Collection: West Elm



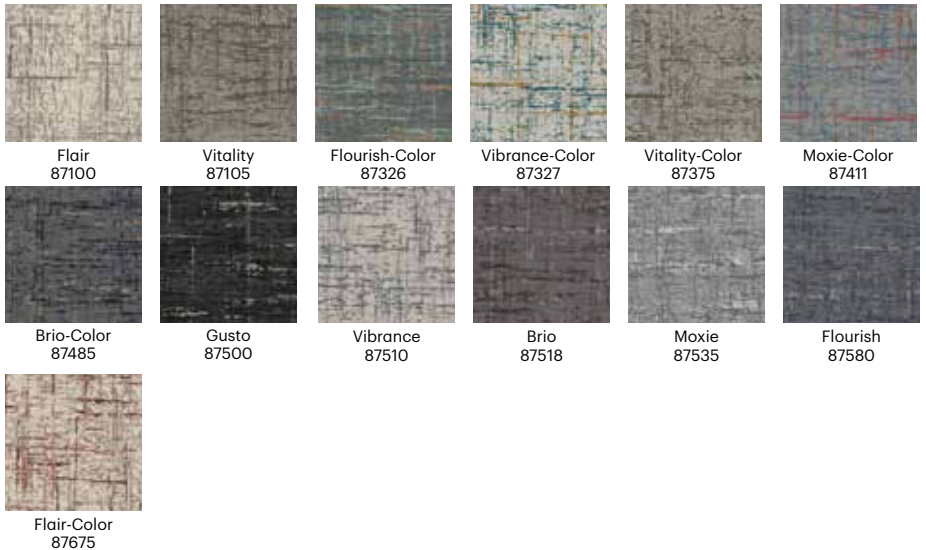
87327 Vibrance-Color

Coordinating Products

Stonework Tile, Chisel Tile, Grit Tile, Zeal Tile, Spark Tile

Product Specifications

Style Number	5T487	
Fibre	Eco Solution Q100™ Nylon	
Dye Method	100% Solution Dyed	
Tufted Weight	26 oz.	881.5 g/m ²
Gauge	1/10	39.4/10 cm
Average Density	5814 ozs./yd ³	0.215 g/cm ³
Product Size	24 in x 24 in	61.0 cm x 61.0 cm
Secondary Backing	EcoWorx®	
Recommended Installation	Monolithic, Quarter Turn, Brick, Ashlar, Random	





ShawContract®