

FLOORING STANDARDS

# Spark by Hilton Spring Scheme

ACCOUNT MANAGER

**David Burn**

[dburn1@mac.com](mailto:dburn1@mac.com)

301.520.9360

CUSTOMER SERVICE

**Jessica Beavers**

[jessica.beavers@shawinc.com](mailto:jessica.beavers@shawinc.com)

706.217.3441

VP STRATEGIC ACCOUNTS

**Desiree Perkins**

[desiree.perkins@shawcontract.com](mailto:desiree.perkins@shawcontract.com)

404.452.3055



**ShawContract**<sup>®</sup>  
hospitality



## Our Sustainability Story

Everyone should have access to sustainable products for the places where we heal, learn, rest and work. Our brand vision, Smarter Impact, is our call to action to share insights and solutions that help you act on your power for positive change, especially when it comes to making sustainable choices.

Our view of sustainability encompasses not only the environmental health of our products and our operations, but also how our products impact human experience. For more than 20 years, Shaw Contract Hospitality has demonstrated our commitment to the Cradle to Cradle® design philosophy and the Cradle to Cradle Certified™ Products Program. More than 90% of the products we manufacture have achieved this prestigious multi-attribute certification, protecting humans and the environment.



Declare.



## Attributes

- Guest comfort and experience
- High-traffic durability
- Housekeeping support and cleanliness
- Improved acoustics
- Reduced renovation downtime
- Welcoming, customized design

## Why Shaw Contract Hospitality?

- By selecting materials that are sustainably sourced, long-lasting and free of harmful chemicals, hotels can assure guests that their values matter. Shaw Contract Hospitality offers a portfolio of products that satisfy the most stringent sustainability certifications.
- An entire team dedicated to customizing your hospitality project, including design services, visualization, estimating, and install seaming diagrams
- Single point of contact for order entry/monitoring, shipment tracking and expediting, technical services, risk mitigation and problem resolution
- Tailored stocking program based on your forecasting to ensure availability of your standard products and rapid service/reduced lead times

## Product Breadth

- Area Rugs
- Broadloom
- Carpet Tile
- Hardwood
- LVT
- Sheet
- Bio-based Resilient
- COREtec® Resilient
- Accessories







**LVT Flooring @ Guestroom | RES-01**

<b>Style</b>	BS891
<b>Color</b>	56760
<b>Construction</b>	Multilayer SPC with Acoustic Backing
<b>Wear Layer Thickness</b>	12 mil   0.012 in   0.3 mm
<b>Overall Thickness</b>	0.173 in   4.4 mm
<b>Nominal Dimensions</b>	7 in x 48 in   18 cm x 122 cm
<b>Actual Dimensions</b>	6.92 in x 48.03 in   17.58 cm x 122 cm
<b>Installation</b>	Floating or Direct Glue
<b>Approved Install Method</b>	Ashlar or Stagger
<b>Area Per Box</b>	27.73 sq ft   12 pcs per box
<b>Warranty</b>	10 Year Commercial Limited

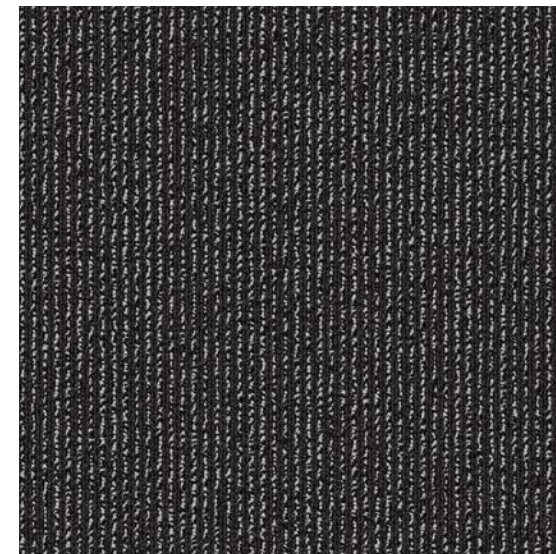


For sample, order BS891 color 56760.



**Carpet Tile @ Guestroom | CP-01**

<b>Style</b>	BS726
<b>Color</b>	D8514
<b>Product Type</b>	Carpet Tile
<b>Fiber</b>	Eco Solution Q® Nylon
<b>Dye Method</b>	100% Solution Dyed
<b>Construction</b>	1/12 Full Repeat Scroll
<b>Tufted Weight</b>	18 oz/yd²   610.32 g/m²
<b>Gauge</b>	1/12 in   47.24 per 10 cm
<b>Stitches</b>	9.33 per in   36.73 per 10 cm
<b>Size</b>	24 in x 24 in   60.96 cm x 60.96 cm
<b>Backing</b>	Ecworx® Tile
<b>Installation</b>	Direct Glue
<b>Installation Method</b>	Quarter Turn
<b>Warranty</b>	Lifetime Commercial Limited

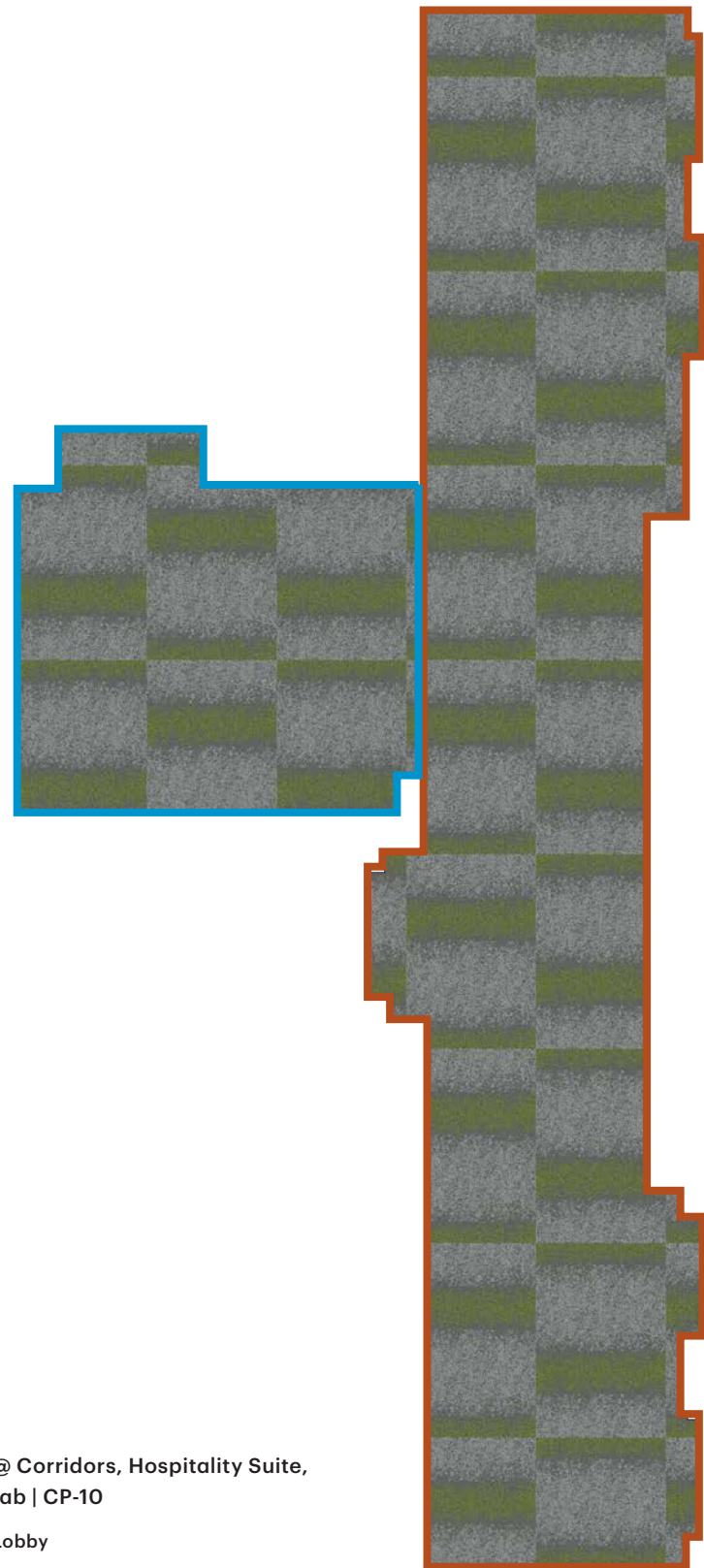


For sample, order BS726 color D8514.



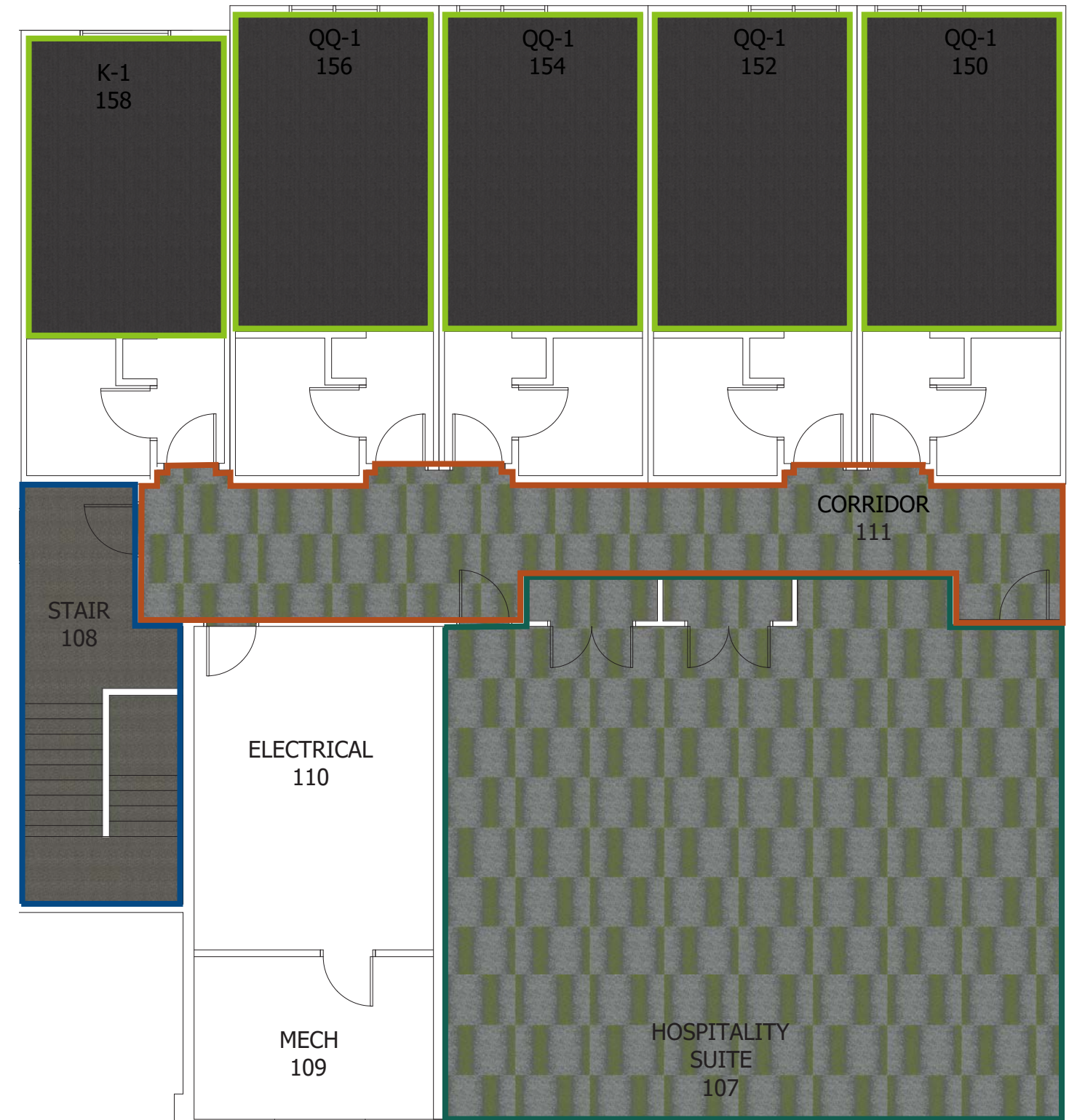






Carpet Tile @ Corridors, Hospitality Suite,  
& Elevator Cab | CP-10

- Elevator Lobby
- Corridor



First Floor

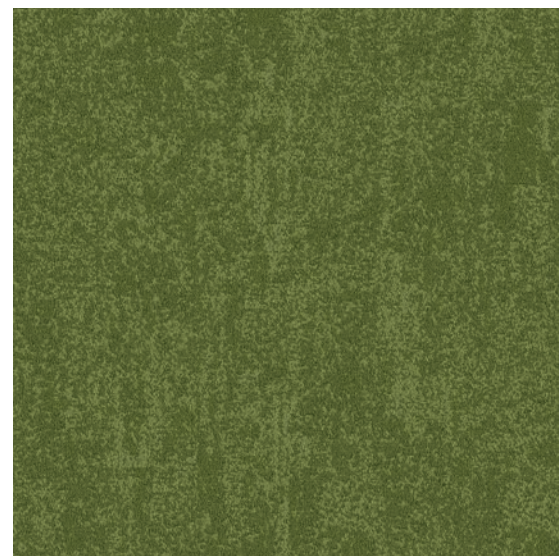
- Stairwell
- Hospitality Suite
- Guestroom
- Corridor





### Carpet Tile @ Lobby & Reception (Guest Side) | CP-11

<b>Style</b>	BS672
<b>Color</b>	D3193
<b>Product Type</b>	Carpet Tile
<b>Fiber</b>	Eco Solution Q® Nylon
<b>Dye Method</b>	100% Solution Dyed
<b>Construction</b>	Multi-Level Loop
<b>Tufted Weight</b>	22 oz/yd²   745.9 g/m²
<b>Gauge</b>	1/10 in   39.4 per 10 cm
<b>Stitches</b>	11.83 per in   46.57 per 10 cm
<b>Size</b>	9 in x 36 in   23 cm x 91 cm
<b>Backing</b>	Ecworx® Tile
<b>Installation</b>	Direct Glue
<b>Installation Method</b>	Ashlar
<b>Warranty</b>	Lifetime Commercial Limited



For sample, order BS672 color D3193.



### Area Rug @ Lobby & Reception (Guest Side) | CP-12 (4' x 12')

<b>Style</b>	BS674
<b>Color</b>	D3178
<b>Product Type</b>	Area Rug
<b>Fiber</b>	Eco Solution Q® Nylon
<b>Dye Method</b>	100% Solution Dyed
<b>Construction</b>	Multi-Level Loop Tip Shear
<b>Tufted Weight</b>	23 oz/yd²   779.85 g/m²
<b>Gauge</b>	1/10 in   39.4 per 10 cm
<b>Stitches</b>	8 per in   31.5 per 10 cm
<b>Size</b>	4 ft x 12 ft   1.22 m x 3.66 m
<b>Pattern Repeat</b>	72 in x 124 in   182.88 cm x 314.96 cm
<b>Backing</b>	Ultraloc®
<b>Installation</b>	Loose Lay
<b>Warranty</b>	Lifetime Commercial Limited



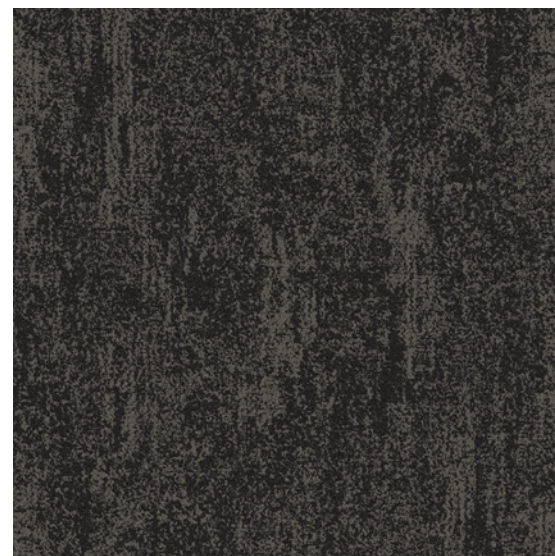
For sample, order BS674 color D3178.





## Carpet Tile @ Reception (Service Side), BOH (option), & Large Fully Carpeted Lobbies | CP-13

Style	BS676
Color	D3190
Product Type	Carpet Tile
Fiber	Eco Solution Q® Nylon
Dye Method	100% Solution Dyed
Construction	Multi-Level Loop
Tufted Weight	22 oz/yd²   745.9 g/m²
Gauge	1/10 in   39.4 per 10 cm
Stitches	11.83 per in   46.57 per 10 cm
Size	9 in x 36 in   23 cm x 91 cm
Backing	Ecoworx® Tile
Installation	Direct Glue
Installation Method	Ashlar
Warranty	Lifetime Commercial Limited



For sample, order BS676 color D3190.



## Broadloom Carpet @ Stairwell & BOH (option) | CP-14

Style	BS727
Color	11580
Product Type	Broadloom
Fiber	Eco Solution Q® Nylon
Dye Method	100% Solution Dyed
Construction	Multi-Level Pattern Cut/Loop
Tufted Weight	32 oz/yd²   1085 g/m²
Gauge	1/10 in   39.4 per 10 cm
Stitches	12 per in   47 per 10 cm
Size	12 ft   3.66 m
Pattern Repeat	12 in x 18 in   30.48 cm x 45.72 cm
Backing	Classicbac®
Installation	Direct Glue
Warranty	10 Year Commercial Limited



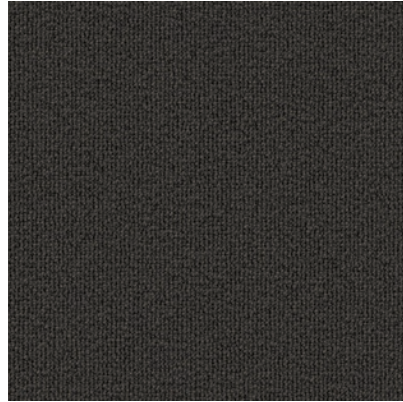
For sample, order BS727 color 11580.



## Additional Products

### Carpet Base @ Guestroom | CP-01.1

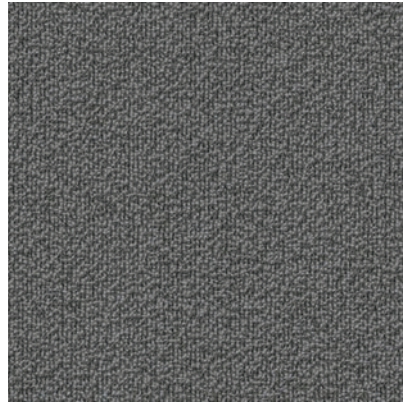
Style	BS741
Color	E3069
Product type	Carpet Base
Size	4 in
Warranty	1 Year Commercial Limited



For sample, order BS741 color E3069.

### Carpet Base @ Corridors | CP-10.1

Style	BS734
Color	E2705
Product type	Carpet Base
Size	4 in
Warranty	1 Year Commercial Limited

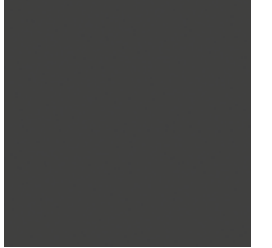


For sample, order BS734 color E2705.

## Additional Products

### Resilient Base @ Guestroom | RB-01

Style	BS761
Color	00580
Product Type	4.50 in Wall Base
Construction	Thermoplastic Rubber (TPR)
Actual Dimensions	96 in length x 4.50 in width
Linear ft per roll   Pieces per roll	48   6
Warranty	5 Year Commercial Limited



For sample, order BS761 color 00580.

### Resilient Base @ Fitness & BOH | RB-10

Style	BS739
Color	00035
Product Type	4.50 in Wall Base
Construction	Thermoplastic Rubber (TPR)
Actual Dimensions	96 in length x 4.50 in width
Linear ft per roll   Pieces per roll	48   6
Warranty	5 Year Commercial Limited



For sample, order BS739 color 00035.

### Resilient Base @ Lobby & Hospitality Suite | RB-11

Style	BS740
Color	00066
Product Type	6 in Wall Base
Construction	Thermoplastic Rubber (TPR)
Actual Dimensions	96 in length x 6 in width
Linear ft per roll   Pieces per roll	48   6
Warranty	5 Year Commercial Limited



For sample, order BS740 color 00066.



## Additional Products

---

### Guestroom & Public Space Carpet Tile Cushion

---

Style	CU034
Description	CushionWorx
Spread Rate	75-100 sf per gal
Weight	40 lbs/roll   18.14 kg/roll
Thickness	0.125 in   3.18 mm
Density	4.0 lb/ft <sup>3</sup>   64 kg/m <sup>3</sup>
Square Yards Per Roll	105.6

### Broadloom Adhesive

---

Style	H1000
Description	LokWorx+ Broadloom Adhesive   4 gal
Spread Rate	75-100 sf per gal

### Carpet Tile Adhesive

---

Style	N5000
Description	LokWorx+ Carpet Tile Adhesive   4 gal
Spread Rate	250-300 sf per gal

### Seam Sealer

---

Style	H4000
Description	Shaw 4000   1 qt
Spread Rate	550-600 lf per qt

### Cove Base Adhesive

---

Style	166VS	141VS
Description	Cove Base Adhesive   1 gallon pail	Cove Base Adhesive   12 30oz tubes per box
Spread Rate	240 lf per gallon	55-60 lf per tube

### LVT Adhesive

---

Style	109VS
Description	Shaw 200   4 gal
Spread Rate	175-225 sf per gal

Owners may select one of these Hilton approved procurement companies.

---

### Design Environments

Shaw Hospitality Sales Representative  
**Kari Lewis**  
 kari.lewis@shawcontract.com  
 770.468.6237

### Hersha Purchasing and Design

Shaw Hospitality Sales Representative  
**Sloane Houston**  
 sloane.houston@shawcontract.com  
 610.613.3229

### Hilton Supply Management

Shaw Hospitality Sales Representative  
**David Burn**  
 davidburn@earthlink.net  
 301.520.9360

### Populate Procurement (The Gettys Group)

Shaw Hospitality Sales Representative  
**Kristin Mayle Hasson**  
 kristin.mayle@shawcontract.com  
 312.519.9292

### Q&A Hospitality Services

Shaw Hospitality Sales Representative  
**Lauren Serra**  
 lauren.serra@shawcontract.com  
 312.350.3860



