

ShawContract®

IN STOCK CATALOGUE
MARCH 2021

ShawContract®

- 3 Who is Shaw Contract?
- 4 Why Shaw Contract?
- 5-10 Resilient options for reception and break out areas
- 11-24 High Design for impact with new collection releases
- 25 -26 Add some colour and interest for way finding and branding
- 27-33 Charcoals and greys ideal for a neutral scheme or base build
- 34 Protect your investment with entrance tiles
- 35-37 Material Health
- 38 Contacts Page

WHO IS SHAW CONTRACT?

Shaw Contract designs and manufactures modular carpet, broadloom and resilient products that give foundation to space and support people within it. Our human-centered approach to service combines mind, hand and heart with the goal to make a Smarter Impact for our clients in all that we do. Ours is an optimistic agenda that places power for positive change at scale in all our hands for people and planet. We're headquartered in Cartersville, Georgia with associates and operations all over the world.

BE KNOWLEDGE LED

Being a knowledge-led brand means that when we approach our clients and end-users, we come asking questions so that we can create products and solutions that matter to them.

BE HUMAN-CENTRIC

Floors give foundation to space and support people within it. We have a human-centred approach that combines mind, hand and heart. This approach applies to all areas of our culture, business and operation, and from person to product to planet. We are bigger than who we are and what we make.

BE OPTIMISTIC

A Smarter Impact mindset recognises that everything is connected. As a global organisation, we have the power to make positive change for people and planet. Design is inherently optimistic. Designers dream of a future that doesn't yet exist, and work to bring that future to life. They see a path of opportunity, one where problems can be solved, constraints moved, policies evolved, and behavior changed.

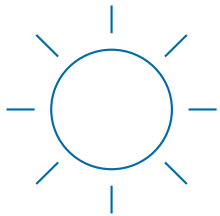


WHY SHAW CONTRACT?



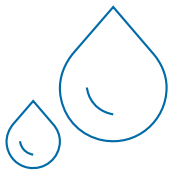
CREATE HEALTHY WORKPLACES FOR YOUR CLIENTS

- Safe, healthy Cradle to Cradle® certified materials
- Maximum points on Greenstar & WELL certified projects
- Cost savings utilising global economies of scale
- LokDots reduce slab preparation costs for refurbishments
- LokDots allows installation on green slabs at 100% RH



REDUCE LIFECYCLE OWNERSHIP COSTS

- Lifetime commercial warranty
- Guaranteed take back at end of product lifecycle at no cost
- LokDots allows simple tile replacement and immediate occupancy
- No Rules carpet collections with mergeable dye lots allow selective replacement



REDUCE PROJECT COSTS

- VITS system reduces installation costs in occupied spaces
- Guaranteed take back at end of product lifecycle at no cost



REDUCE PROJECT RISK

- World's largest yarn manufacturer
- World's largest carpet recycler
- Significant In Stock product range available nationally
- Global supply chain to ensure continuity of supply
- Single source flooring provider - carpet tile, broadloom and resilient

REDUCE IMPACT

- 100% of Shaw Contract's facilities are carbon neutral
- Shaw Contract is a signatory to the United Nations Global Compact, guiding sustainable sourcing, protecting human rights, environment & anti-corruption standards

COMPOSED LVT 098UV



Stony Oak
098UV 00516

PRODUCT SPECIFICATIONS

style/number	composed 098UV
collection	concrete & composed
dimensions	18.11 cm x 122.00 cm (7.13" x 48.03")
construction	COREtec with XRC
attached underlayment	cork
overall thickness	5.5 mm (0.216")
finish	ExoGuard™
wear layer thickness	20 mil or 0.020 (0.5 mm)
Installation	floating or glue down



Bison
098UV 00751



Cascade
098UV 00120



Chalet
098UV 00755



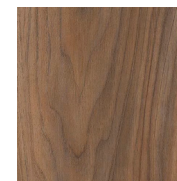
Grand Teton
098UV 00506



Landscape
098UV 00760



Orchard
098UV 00103



Spice
098UV 00720

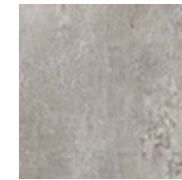
CONCRETE LVT 094UV



Forged Concrete
094UV 03507



Misty Quartz
094UV 03501



Tempered Concrete
094UV 03502

PRODUCT SPECIFICATIONS

style/number
concrete 094UV

collection
concrete & composed

dimensions
46.99 cm x 61.01 cm (18.5" x 24.02")

construction
COREtec with XRC

attached underlayment
cork

overall thickness
5.5 mm (0.216")

finish
ExoGuard™

wear layer thickness
20 mil or 0.020 (0.5 mm)

Installation
floating or glue down

SOLITUDE LVT 0648V



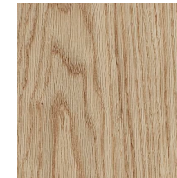
Cocoa
0648V 48103



Smoke
0648V 48506



Umber
0648V 48761



Natural
0648V 48250



Cottonwood
0648V 48120

PRODUCT SPECIFICATIONS

style/number
solitude 0648V

collection
solitude

dimensions
15.24 cm x 121.92 cm

construction
luxury vinyl tile with fibreglass

class/ASTM 1700
class III, type B

overall thickness
5.0 mm

finish
ExoGuard™

wear layer thickness
20 mil or 0.020 (0,51 mm)

Installation
glue down



Urban Ash
0648V 48540

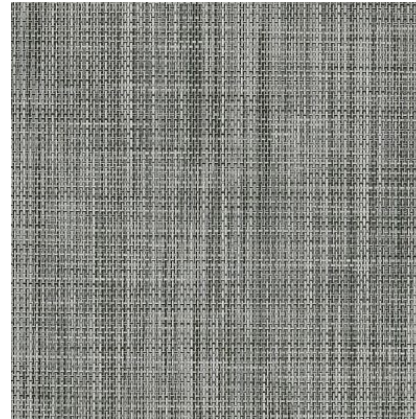


Woodland
0648V 48760



Char
0648V 48549

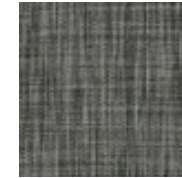
RETHINK LVT 0733V



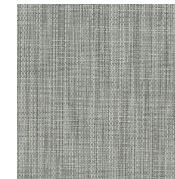
Hybrid
0733V 33100



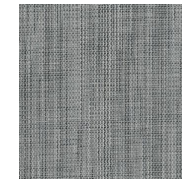
Minimal
0733V 33155



Carbon
0733V 33505



Core
0733V 33515



Metal
0733V 33530

PRODUCT SPECIFICATIONS

style/number
rethink 0733V

collection
rethink

dimensions
22.86 cm x 91.44 cm

construction
woven luxury vinyl tile

class/ASTM 1700
class III surface decorated vinyl tile

overall thickness
3.0 mm

finish
ExoGuard™ Quartz Enhanced Urethane

Installation
glue down

ABIDE LVT 4107V



Conch Shell Oak
07140



Heirloom Oak
07150



Maize Wenge
07210



Wheat Oak
07220



Tahini Oak
07240

PRODUCT SPECIFICATIONS

style/number
Abide 4107V

collection
Abide & Inhabit

dimensions
18 cm x 122 cm

construction
commercial luxury vinyl tile

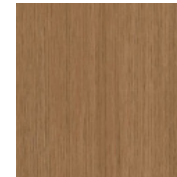
class/ASTM 1700
class III, type B

overall thickness
2.5 mm

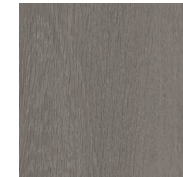
finish
ExoGuard+™

wear layer thickness
20 mil or 0.020 (0.51 mm)

Installation
glue down



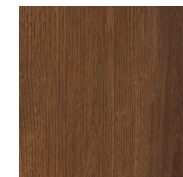
Caramel Wenge
07250



Cadmium Oak
07515



Anise Oak
07570



Spiced Oak
07630

ABIDE LVT 4107V



Brushed Suede Oak
07700



Palomino Oak
07660



Allspice Walnut
07710



Coriander Oak
07720



Gabon Wenge
07730

PRODUCT SPECIFICATIONS

style/number
Abide 4107V

collection
Abide & Inhabit

dimensions
18 cm x 122 cm

construction
commercial luxury vinyl tile

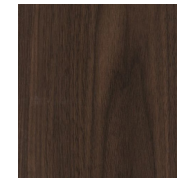
class/ASTM 1700
class III, type B

overall thickness
2.5 mm

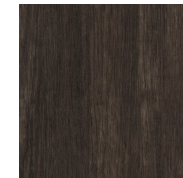
finish
ExoGuard+™

wear layer thickness
20 mil or 0.020 (0.51 mm)

Installation
glue down



Chocolate Walnut
07760



Raw Umber Oak
07780

QUIET COVER LVT 0186V



Mink
00720

PRODUCT SPECIFICATIONS

style/number

quiet cover 0186V

collection

Quiet Cover

dimensions

18 cm x 122 cm

construction

commercial luxury vinyl tile

class/ASTM 1700

class III, type B

overall thickness

5 mm

finish

ExoGuard+™

wear layer thickness

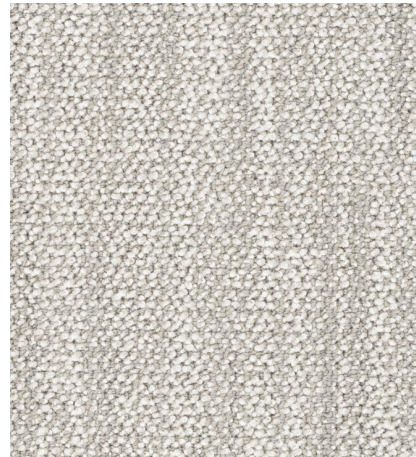
20 mil or 0.020 (0.51 mm)

Installation

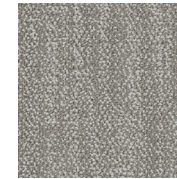
floating

HEDDLE 5T320

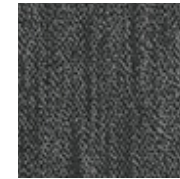
COMMUNITY



Argan
5T320 01100



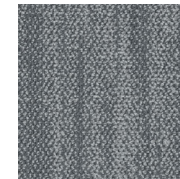
Wool
5T320 01105



Crafted
5T320 01580



Medina
5T320 01505



Silver
5T320 01535

PRODUCT SPECIFICATIONS

style/number
heddle 5T320

collection
community

dimensions
22.86cm x 91.44cm (9" x 36")

product type
tile

fibre product
eco solution Q® nylon

backing
ecoworx® tile

dye method
100% solution dyed

tufted weight
678.1 g/m² (20 oz)

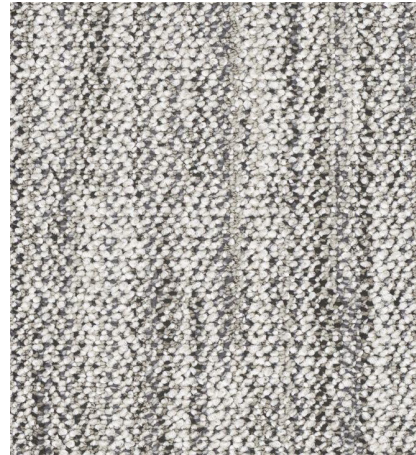
recommended installation
monolithic, herringbone, brick, ashlar, stagger

stitches
34/10cm

gauge
47.2/10cm

FLAT WEAVE 5T321

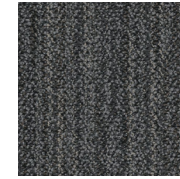
COMMUNITY



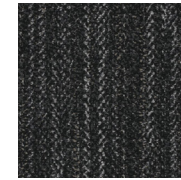
Argan
5T321 01100



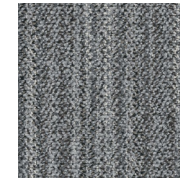
Argan Earth
5T321 01101



Crafted
5T321 01580



Medina
5T321 01505



Silver
5T321 01535



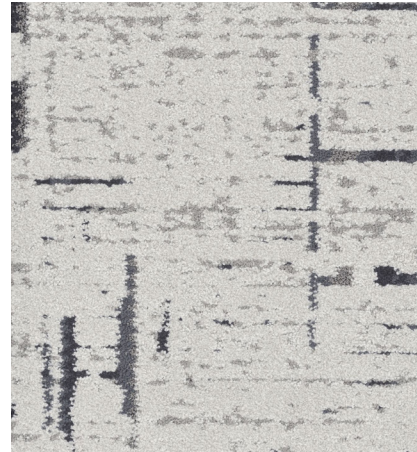
Wool
5T321 01105

PRODUCT SPECIFICATIONS

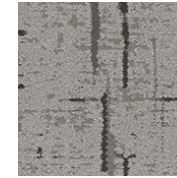
style/number	flat weave 5T321
collection	community
dimensions	22.86cm x 91.44cm (9" x 36")
product type	tile
fibre product	eco solution Q® nylon
backing	ecoworx® tile
dye method	100% solution dyed
tufted weight	678.1 g/m ² (20 oz)
recommended installation	monolithic, herringbone, brick, ashlar, stagger
stitches	34/10cm
gauge	47.2/10cm

EXCHANGE 5T304

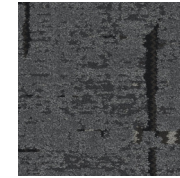
COMMUNITY



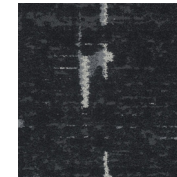
Argan
5T304 01100



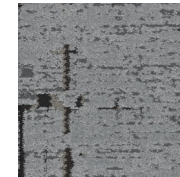
Wool
5T304 01105



Crafted
5T304 01580



Medina
5T304 01505



Silver
5T304 01535

PRODUCT SPECIFICATIONS	
style/number	exchange 5T304
collection	community
dimensions	45.72cm x 91.44cm (18" x 36")
product type	tile
fibre product	eco solution Q® nylon
backing	ecoworx® tile
dye method	100% solution dyed
tufted weight	949.4 g/m ² (28 oz)
recommended installation	monolithic, herringbone, brick, ashlar, stagger, basketweave, half basketweave
stitches	38/10cm
gauge	39.4/10cm

ShawContract®

BACK WEAVE 5T303

COMMUNITY



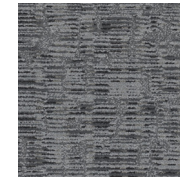
Wool
5T303 01105



Crafted
5T303 01580



Medina
5T303 01505



Silver
5T303 01535

Argan
5T303 01100

PRODUCT SPECIFICATIONS

style/number

back weave 5T303

collection

community

dimensions

45.72cm x 91.44cm (18" x 36")

product type

tile

fibre product

eco solution Q® nylon

backing

ecoworx® tile

dye method

100% solution dyed

tufted weight

949.4 g/m² (28 oz)

recommended installation

monolithic, herringbone, brick, ashlar, stagger,

basketweave, half basketweave

stitches

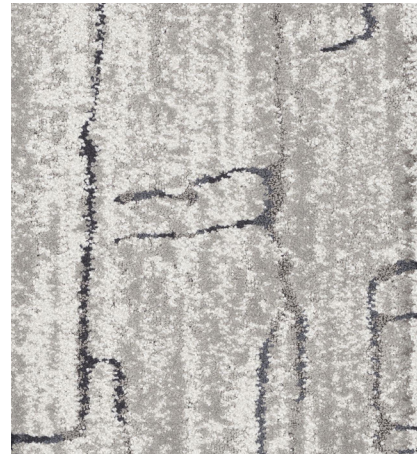
38/10cm

gauge

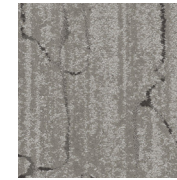
39.4/10cm

PROCESS 5T302

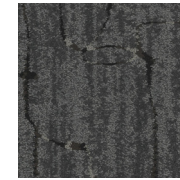
COMMUNITY



Argan
5T302 01100



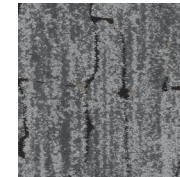
Wool
5T302 01105



Crafted
5T302 01580



Medina
5T302 01505



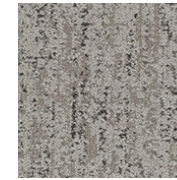
Silver
5T302 01535

PRODUCT SPECIFICATIONS	
style/number	process 5T302
collection	community
dimensions	45.72cm x 91.44cm (18" x 36")
product type	tile
fibre product	eco solution Q® nylon
backing	ecoworx® tile
dye method	100% solution dyed
tufted weight	949.4 g/m ² (28 oz)
recommended installation	monolithic, herringbone, brick, ashlar, stagger, basketweave, half basketweave
stitches	38/10cm
gauge	39.4/10cm

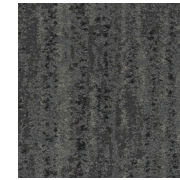
ShawContract®

KNOTTED 5T301

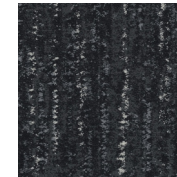
COMMUNITY



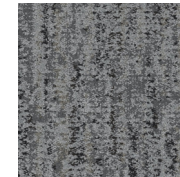
Wool
5T301 01105



Crafted
5T301 01580



Medina
5T301 01505



Silver
5T301 01535

Argan
5T301 01100

PRODUCT SPECIFICATIONS

style/number
knotted 5T301

collection
community

dimensions
45.72cm x 91.44cm (18" x 36")

product type
tile

fibre product
eco solution Q® nylon

backing
ecoworx® tile

dye method
100% solution dyed

tufted weight
949.4 g/m² (28 oz)

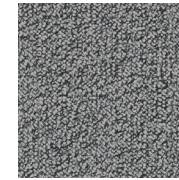
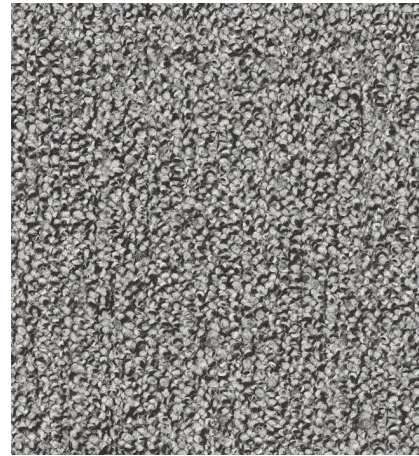
recommended installation
monolithic, herringbone, brick, ashlar, stagger,
basketweave, half basketweave

stitches
38/10cm

gauge
39.4/10cm

NEST 5T238

HAVEN



Rainstorm
5T238 35535

Greige
5T238 35516

PRODUCT SPECIFICATIONS

style/number

nest 5T238

collection

haven

dimensions

22.86cm x 91.44cm (9" x 36")

product type

tile

fibre product

eco solution Q® nylon

backing

ecoworx® tile

dye method

100% solution dyed

tufted weight

813.8 g/m² (24 oz)

recommended installation

monolithic, herringbone, brick, ashlar, stagger

stitches

38.5/10cm

gauge

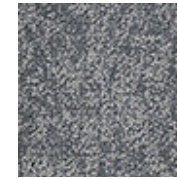
47.2/10cm

SHELTER 5T240

HAVEN



Greige
5T240 35516



Rainstorm
5T240 35535

PRODUCT SPECIFICATIONS

style/number
shelter 5T240

collection
haven

dimensions
22.86cm x 91.44cm (9" x 36")

product type
tile

fibre product
eco solution Q® nylon

backing
ecoworx® tile

dye method
100% solution dyed

tufted weight
746 g/m² (22 oz)

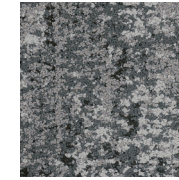
recommended installation
monolithic, herringbone, brick, ashlar, stagger

stitches
32/10cm

gauge
47.2/10cm

FAMILIAR 5T235

HAVEN



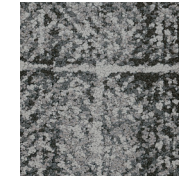
Rainstorm
5T235 35535

Greige
5T235 35516

PRODUCT SPECIFICATIONS	
style/number	familiar 5T235
collection	haven
dimensions	22.86cm x 91.44cm (9" x 36")
product type	tile
fibre product	eco solution Q® nylon
backing	ecoworx® tile
dye method	100% solution dyed
tufted weight	949.4 g/m ² (28 oz)
recommended installation	monolithic, herringbone, brick, ashlar, stagger
stitches	34/10cm
gauge	39.4/10cm

HONEST 5T236

HAVEN



Rainstorm
5T236 35535

Greige
5T236 35516

PRODUCT SPECIFICATIONS

style/number
honest 5T236

collection
haven

dimensions
22.86cm x 91.44cm (9" x 36")

product type
tile

fibre product
eco solution Q® nylon

backing
ecoworx® tile

dye method
100% solution dyed

tufted weight
881.6 g/m² (22 oz)

recommended installation
monolithic, herringbone, brick, ashlar, stagger

stitches
32.5/10cm

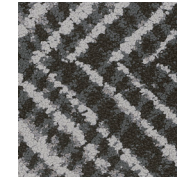
gauge
39.4/10cm

IDENTITY 5T237

HAVEN



Greige
5T237 35516



Rainstorm
5T237 35535

PRODUCT SPECIFICATIONS

style/number
identity 5T237

collection
haven

dimensions
22.86cm x 91.44cm (9" x 36")

product type
tile

fibre product
eco solution Q® nylon

backing
ecoworx® tile

dye method
100% solution dyed

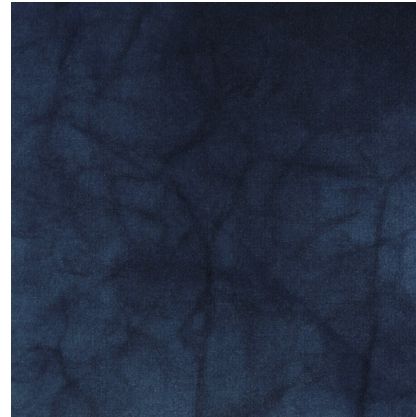
tufted weight
881.6 g/m² (22 oz)

recommended installation
monolithic, herringbone, brick, ashlar, stagger

stitches
32.5/10cm

gauge
39.4/10cm

DYE LAB 5T041

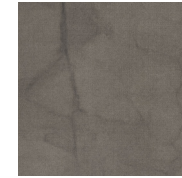


Indigo
5T041 41496

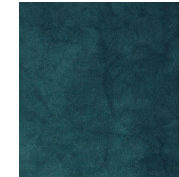
PRODUCT SPECIFICATIONS
style/number dye lab 5T041
collection dye lab
dimensions 60.9cm x 60.9cm (24" x 24")
product type tile
fibre product eco solution Q® nylon
backing ecoworx® tile
dye method 100% piece dyed
tufted weight 1220.61 g/m ² (36 oz)
recommended installation monolithic, 1/4 turn, brick, ashlar,
stitches 43.31/10cm
gauge 39.37/10cm



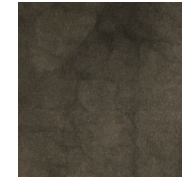
Cornflower
5T041 41480



Henna
5T041 41535



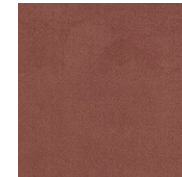
Woad
5T041 41497



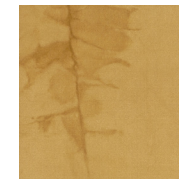
Sumac
5T041 41504



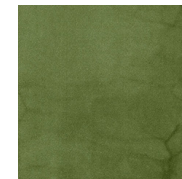
Fustic Wood
5T041 41316



Sandalwood
5T041 41665

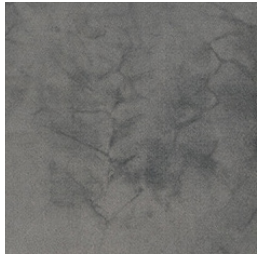


Osage Orange
5T041 41202

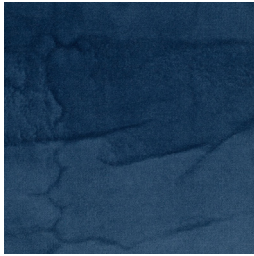


Fustic Saxon
5T041 41396

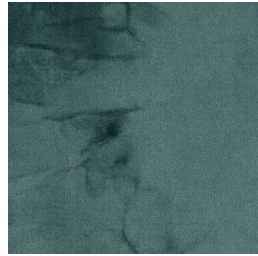
DYE LAB 5T041



Black Walnut
5T041 41402



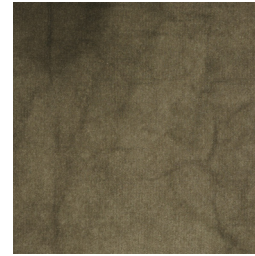
Saxon
5T041 41462



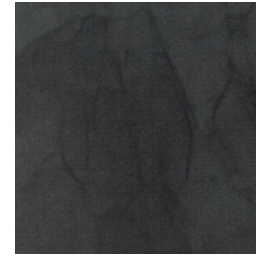
Knotweed
5T041 41491



Logwood
5T041 41505



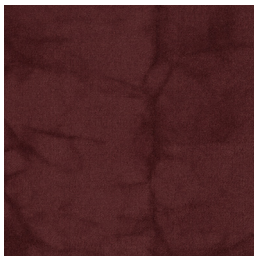
Black Tea
5T041 41516



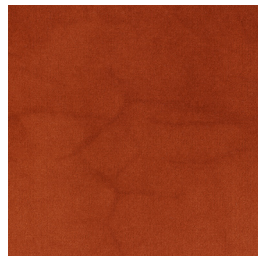
Iron
5T041 41580



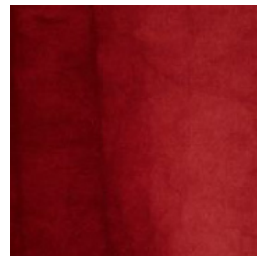
Iris
5T041 41965



Brazil Wood
5T041 41855



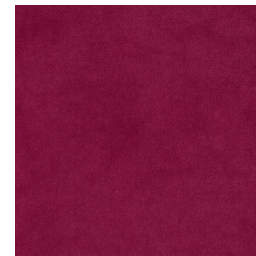
Madder Root
5T041 41864



Cochineal
5T041 41880



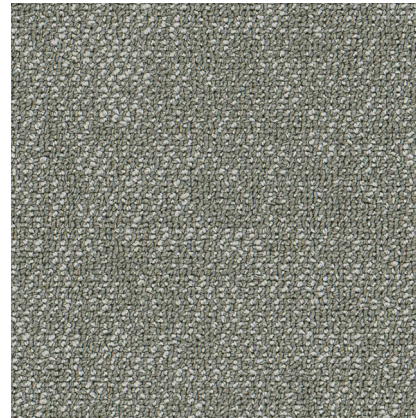
Lac
5T041 41762



Beet
5T041 41890

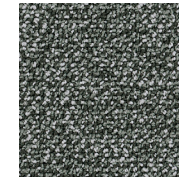
POURED 5T206

FLOOR ARCHITECTURE

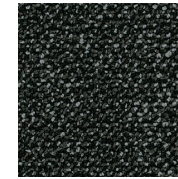


Mortar
5T206 06530

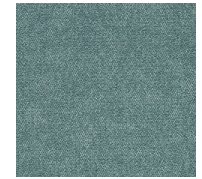
PRODUCT SPECIFICATIONS
style/number poured tile 5T206
collection floor architecture
dimensions 60.96 cm x 60.96 cm (24" x 24")
product type tile
fibre product eco solution Q® nylon
backing ecoworx® tile
dye method 100% solution dyed
tufted weight 542.5 g/m ² (16 oz.)
recommended installation monolithic, quarter turn, ashlar, brick, random
stitches 33/10cm
gauge 47.2/10cm



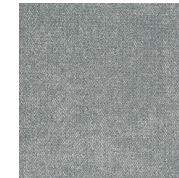
River Rock
5T206 06481



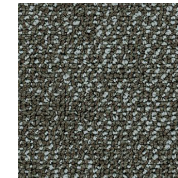
Granite
5T206 06500



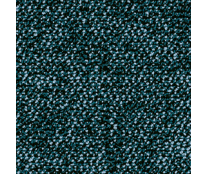
Aquamarine
5T206 06327



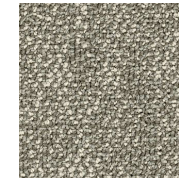
Mineral
5T206 06595



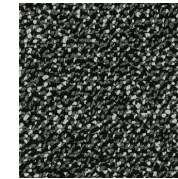
Shale
5T206 06557



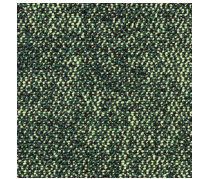
Lapis
5T206 06486



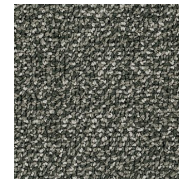
Concrete
5T206 06761



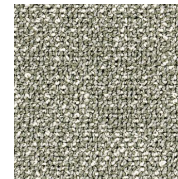
Aggregate
5T206 06501



Emerald
5T206 06335



Mix
5T206 06597

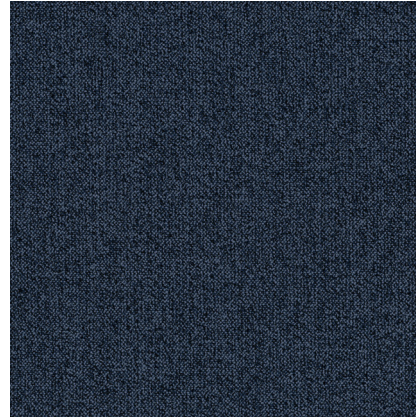


Gypsum
5T206 06515

BELONG 5T261



KINDRED



Solace
5T261 48485

PRODUCT SPECIFICATIONS

style/number
belong 5T261

collection
kindred

dimensions
60.96 cm x 60.96 cm (24" x 24")

product type
tile

fibre product
eco solution Q® nylon

backing
ecoworx® tile

dye method
100% solution dyed

tufted weight
610.3 g/m² (18 oz)

recommended installation
monolithic, quarter turn, ashlar, brick, random

stitches
35.0 per 10 cm

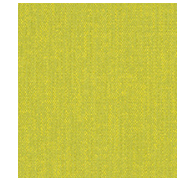
gauge
39.4/10cm

COLOR FRAME 5T081

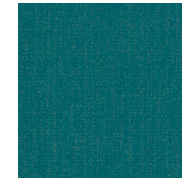
COLOR FRAME | COLOR FORM



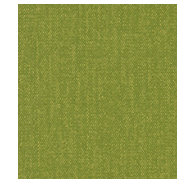
Glowing
5T081 81211



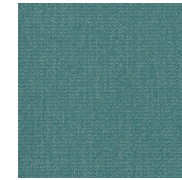
Frolic
5T081 81284



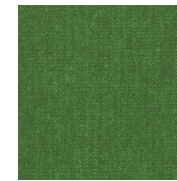
Tricky
5T081 81323



Hyper Green
5T081 81326



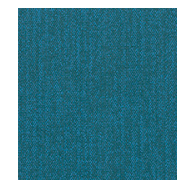
Quirky
5T081 81327



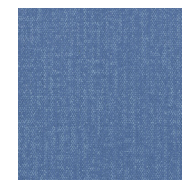
Imagine
5T081 81375



Enchanted
5T081 81370



Inspire
5T081 81405

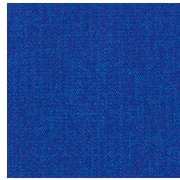


Day Dream
5T081 81415

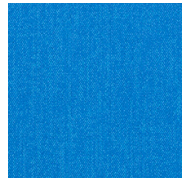
PRODUCT SPECIFICATIONS
style/number color frame tile 5T081
collection color frame color form
dimensions 60.96 cm x 60.96 cm (24" x 24")
product type tile
fibre product eco solution Q® nylon
backing ecoworx® tile
dye method 100% solution dyed
tufted weight 610.30 g/m ² (18 oz)
recommended installation monolithic, 1/4 turn, ashlar, brick, random
stitches 39.37/10cm
gauge 47.24/10cm

COLOR FRAME 5T081

COLOR FRAME | COLOR FORM



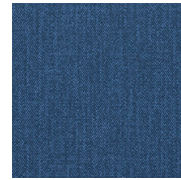
Charming
5T081 81429



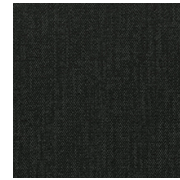
Hyper Blue
5T081 81436



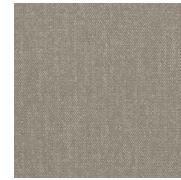
Imply
5T081 81485



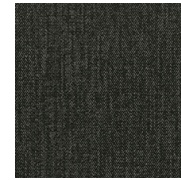
Figment
5T081 81486



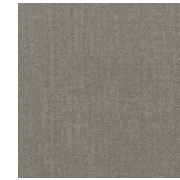
Magic
5T081 81505



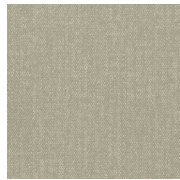
Duplicity
5T081 81506



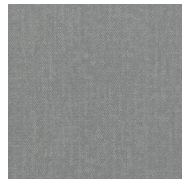
Mask
5T081 81507



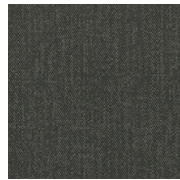
Mystic Grey
5T081 81515



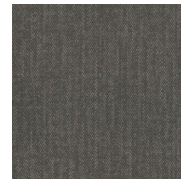
Mystery
5T081 81516



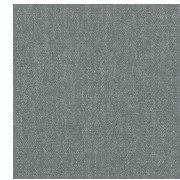
Crystal
5T081 81535



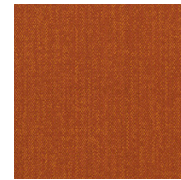
Coax
5T081 81549



Disappear
5T081 81557



Clouded
5T081 81595



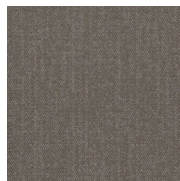
Blaze
5T081 81668



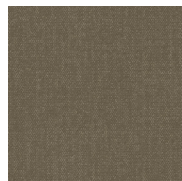
Mojo
5T081 81675



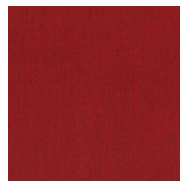
Utopia
5T081 81755



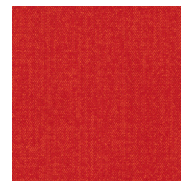
Observe
5T081 81760



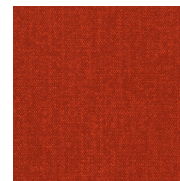
Appearance
5T081 81761



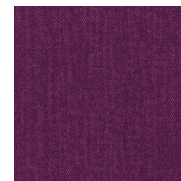
Aurora
5T081 81855



Stunt
5T081 81856



Ember
5T081 81870



Puzzle
5T081 81991

PRIMARY 5T119



SPACE WORX



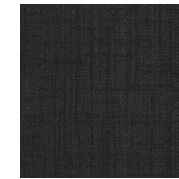
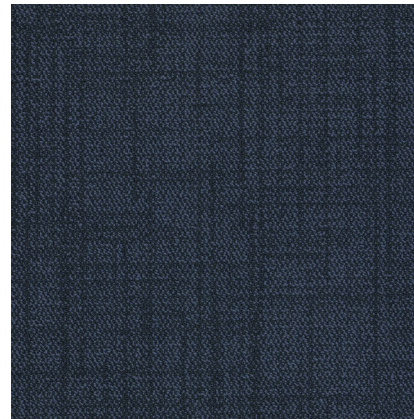
Raven
5T119 17505

PRODUCT SPECIFICATIONS	
style/number	primary 5T119
collection	space worx
dimensions	60.96 cm x 60.96 cm (24" x 24")
product type	tile
fibre product	eco solution Q® nylon
backing	ecoworx® tile
dye method	100% solution dyed
tufted weight	440.77 g/m ² (13 oz)
recommended installation	monolithic, ¼ turn, ashlar, brick
stitches	35.43/10cm
gauge	39.37/10cm

SURROUND 5T120



SPACE WORX



Raven
5T120 17505

Denim
5T120 17496

PRODUCT SPECIFICATIONS

style/number	surround 5T120
collection	space worx
dimensions	60.96 cm x 60.96 cm (24" x 24")
product type	tile
fibre product	eco solution Q® nylon
backing	ecoworx® tile
dye method	100% solution dyed
tufted weight	508.99 g/m ² (15 oz)
recommended installation	monolithic, ¼ turn, ashlar, brick
stitches	35.43/10cm
gauge	47.24/10cm

PETO INTRINSIC 42BRX

PACIFIC



Tarmac

42BRX N577L

PRODUCT SPECIFICATIONS

style/number

peto intrinsic 42BRX

collection

pacific

dimensions

60.96 cm x 60.96 cm (24" x 24")

product type

tile

fibre product

eco solution Q® nylon

backing

ecoworx® tile

dye method

100% solution dyed

tufted weight

745.93 g/m² (22 oz)

recommended installation

quarter turn

stitches

31.5/10cm

gauge

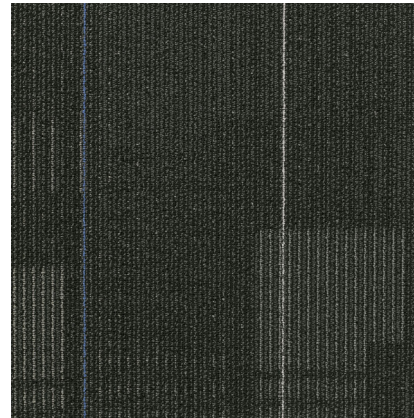
47.2/10cm

DIFFUSE 59575



DIFFUSE + DISPERSE

on



Magnetic Fields

59575 75505

PRODUCT SPECIFICATIONS

style/number
diffuse 59575

collection
diffuse + disperse

dimensions
60.96 cm x 60.96 cm (24" x 24")

product type
tile

fibre product
eco solution Q® nylon

backing
ecoworx® tile

dye method
100% solution dyed

tufted weight
542.49 g/m² (16 oz)

recommended installation
monolithic, ¼ turn, ashlar, brick, random

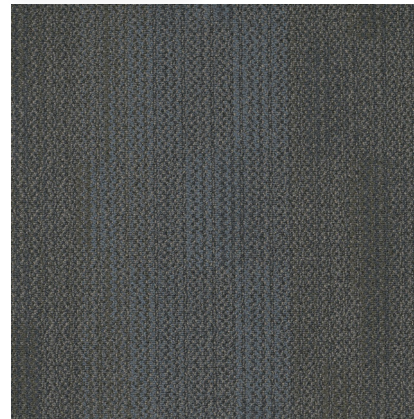
stitches
35.4/10cm

gauge
47.2/10cm

CAPTIVATE 59554



no rules



Silver Streak
59554 54530

PRODUCT SPECIFICATIONS

style/number
captivate 59554

collection
no rules

dimensions
60.96 cm x 60.96 cm (24" x 24")

product type
tile

fibre product
eco solution Q[®] nylon

backing
ecoworx[®] tile

dye method
100% solution dyed

tufted weight
644.2 g/m² (19 oz)

recommended installation
monolithic, ¼ turn, ashlar, brick, random

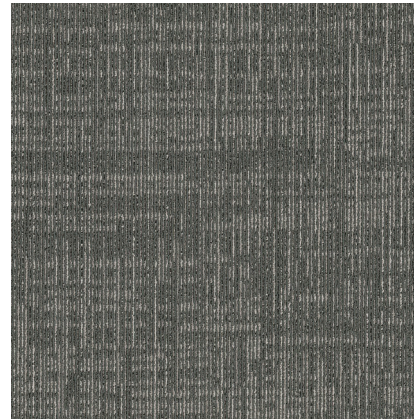
stitches
36/10cm

gauge
47.2/10cm

DELICATE 5T154



BRUSH WORKS



Inkwash
5T154 53549

PRODUCT SPECIFICATIONS

style/number
delicate 5T154

collection
brush works

dimensions
60.96 cm x 60.96 cm (24" x 24")

product type
tile

fibre product
eco solution Q® nylon

backing
ecoworx® tile

dye method
100% solution dyed

tufted weight
542.5 g/m² (16 oz)

recommended installation
monolithic, ¼ turn, ashlar, brick, random

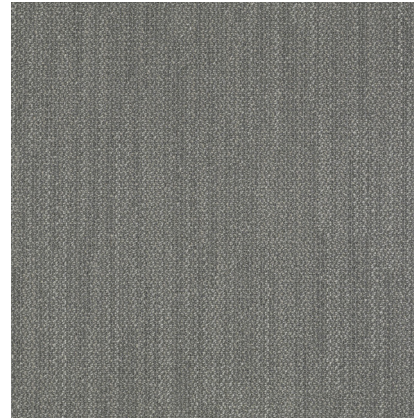
stitches
43.5/10cm

gauge
39.4/10cm

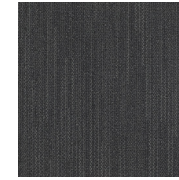
EMBARK 5T040



MATERIAL MATTERS



Airy
5T040 37530



Myth
5T040 37505

PRODUCT SPECIFICATIONS

style/number
embark 5T040

collection
material matters

dimensions
60.96 cm x 60.96 cm (24" x 24")

product type
tile

fibre product
eco solution Q® nylon

backing
ecoworx® tile

dye method
100% solution dyed

tufted weight
576.4 g/m² (17oz)

recommended installation
monolithic, ¼ turn, ashlar, brick

stitches
34.5/10cm

gauge
47.2/10cm

WELCOME II 5T031

ENTRANCE MAT

STEPPIN OUT



Charcoal
5T031 31549

PRODUCT SPECIFICATIONS

style/number
welcome II 5T031

collection
steppin out

dimensions
60.96 cm x 60.96 cm (24" x 24")

product type
tile

fibre product
pet polyester

backing
ecoworx® tile

dye method
100% solution dyed

tufted weight
1661.4 g/m² (49 oz)

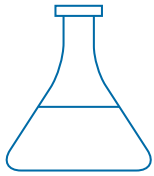
recommended installation
¼ turn

stitches
36/10cm

gauge
47.2/10cm

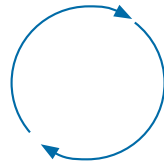
CRADLE TO CRADLE® DESIGN

SHAW CONTRACT ECOWORX® CARPET TILES UTILISE THE CRADLE TO CRADLE DESIGN PHILOSOPHY™ TO MAXIMISE MATERIAL VALUE WHILE ELIMINATING WASTE



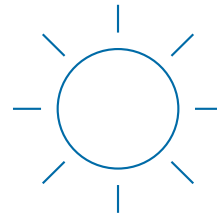
Material Health

The framework and assessment process to ensure that a product is made from ingredients that are safe and healthy to humans and the environment



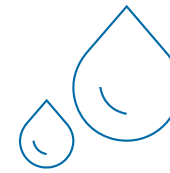
Material Reutilisation (Product Circularity)

The component that requires a product to use recycled content and be designed to be recycled



Renewable Energy & Carbon Management

The expectation to use sources of clean, renewable energy to manufacture products and to reduce energy use overall



Water Stewardship

The principle that water is a precious global resource that must be protected



Social Fairness

The pillar that ensures business operations are designed to honour and respect all people and nature

INNOVATIVE PRODUCTS

LokDots™



LokDots vs. Glue

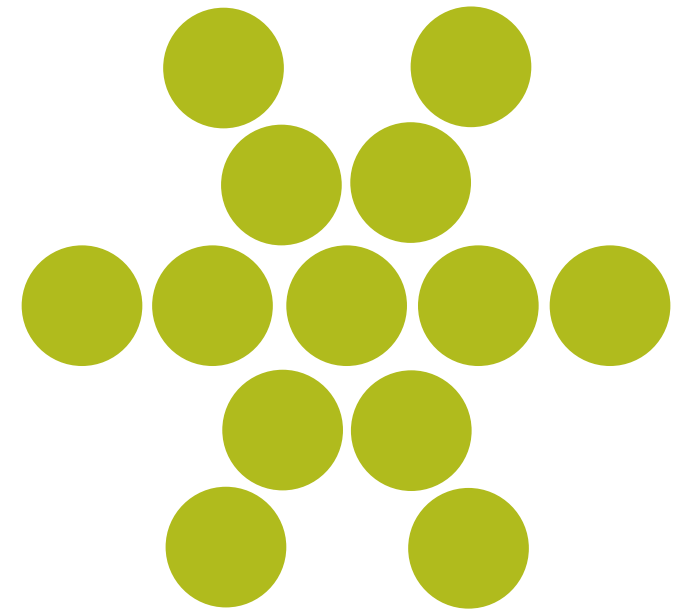


97% weight difference

DRY ADHESIVE DOTS APPLIED TO ECOWORX® TILE BACKING WITH HANDHELD APPLICATOR

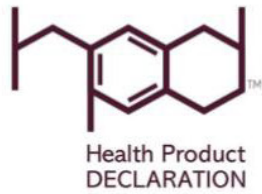
LokDots is a pressure sensitive adhesive for the installation of EcoWorx® carpet tile. This odorless system provides an alternative to wet adhesive, virtually eliminating the issue of Volatile Organic Compounds (VOCs), and providing ease and versatility of installation.

- Odorless, moisture tolerant and easy to install
- LokDots allows installation on green slabs at 100% RH
- Ideal for installation in occupied space
- Shaw Contract carpet tile installed with LokDots are moveable, 100% recyclable, and offer guaranteed reclamation and recycling

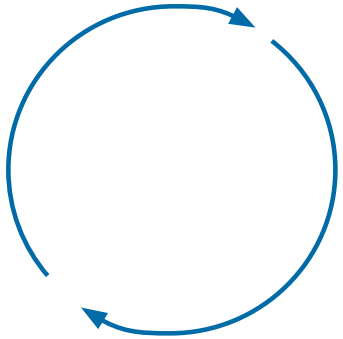


ShawContract®

THIRD PARTY CERTIFICATIONS



ECOWORX® & ECOLOGIX® ENVIRONMENTAL GUARANTEE



GUARANTEED RECLAMATION & RECYCLING.

WE WANT IT BACK

Australia & New Zealand Guarantee:

At the end of its useful life, we will pick up any EcoWorx® & Ecologix® carpet tile and recycle it into new product. Shaw Contract will take back EcoWorx® & Ecologix® material from your flooring contractors warehouse at no cost to you. Shaw will then collate the orders into a full container, and will assume the cost to transport the product to our recycling facilities.

That's our Environmental Guarantee.

CONTACT:

BUILDING 3A, 650 CHURCH STREET
RICHMOND VIC 3121

CUSTOMER SERVICE
P: 1800 556 302

SUITE 48, 26-32 PIRRAMA ROAD
PYRMONT NSW 2009

shawcontract.com

MAX EKINS
MARKETING DIRECTOR
M: 0438 498 297
E: MAX.EKINS@SHAWCONTRACT.COM

CHELSEA PIRRECA
ACCOUNT MANAGER - ACT
M: 0475 757 574
E: CHELSEA.PIRRECA@SHAWCONTRACT.COM

TERRIE BROWN
ACCOUNT MANAGER - VIC & TAS
M: 0488 766 507
E: TERRIE.BROWN@SHAWCONTRACT.COM

ANTON ARATHOON
REGIONAL VICE PRESIDENT - NORTHERN REGION
M: 0411 306 711
E: ANTON.ARATHOON@SHAWCONTRACT.COM

KRISTY AUSTINE
ACCOUNT MANAGER - QLD
M: 0435 766 356
E: KRISTY.AUSTINE@SHAWCONTRACT.COM

BORIS STEFANOVIC
ACCOUNT MANAGER - SA & NT
M: 0435 766 337
E: BORIS.STEFANOVIC@SHAWCONTRACT.COM

ALEXANDRA MARCEL
ACCOUNT MANAGER - NSW
M: 0438 255 408
E: ALEXANDRA.MARCEL@SHAWCONTRACT.COM

MICHELLE ROSSI
ACCOUNT MANAGER - QLD
M: 0498 002 777
E: MICHELLE.ROSSI@SHAWCONTRACT.COM

MELANIE JACKSON
ACCOUNT MANAGER - WA
M: 0408 746 429
E: MELANIE.JACKSON@SHAWCONTRACT.COM

CHRIS HODSON
ACCOUNT MANAGER - NSW
M: 0437 956 613
E: CHRIS.HODSON@SHAWCONTRACT.COM

DAVE MOOLMAN
REGIONAL VICE PRESIDENT - SOUTHERN REGION
M: 0418 253 849
E: DAVE.MOOLMAN@SHAWCONTRACT.COM

TIM STACEY
ACCOUNT MANAGER - WA
M: 0418 914 794
E: TIM.STACEY@SHAWCONTRACT.COM

AMANDA HALAKA
ACCOUNT MANAGER - NSW
M: 0458 855 525
E: AMANDA.HALAKA@SHAWCONTRACT.COM

ALLISON TREBILCOCK
SENIOR ACCOUNT MANAGER - VIC
M: 0413 717 099
E: ALLISON.TREBILCOCK@SHAWCONTRACT.COM

JANIS LO
ACCOUNT MANAGER - NSW
M: 0427 737 080
E: JANIS.LO@SHAWCONTRACT.COM

KARLA HENDY
ACCOUNT MANAGER - VIC
M: 0438 202 679
E: KARLA.HENDY@SHAWCONTRACT.COM

ShawContract®