

FLOORING STANDARDS

# Hampton Inn by Hilton Casual Scheme

ACCOUNT MANAGER

**Rodney Baumgardner**

rodney.baumgardner@shawcontract.com  
901.355.6521

CUSTOMER SERVICE

**Natashia Kernea**

natashia.kernea@shawinc.com  
706.217.3440

VP STRATEGIC ACCOUNTS

**Desiree Perkins**

desiree.perkins@shawcontract.com  
404.452.3055

**ShawContract**<sup>®</sup>  
hospitality



## Our Sustainability Story

Everyone should have access to sustainable products for the places where we heal, learn, rest and work. Our brand vision, Smarter Impact, is our call to action to share insights and solutions that help you act on your power for positive change, especially when it comes to making sustainable choices.

Our view of sustainability encompasses not only the environmental health of our products and our operations, but also how our products impact human experience. For more than 20 years, Shaw Contract Hospitality has demonstrated our commitment to the Cradle to Cradle® design philosophy and the Cradle to Cradle Certified™ Products Program. More than 90% of the products we manufacture have achieved this prestigious multi-attribute certification, protecting humans and the environment.



Declare.

EPD®



## Attributes

- Guest comfort and experience
- High-traffic durability
- Housekeeping support and cleanliness
- Improved acoustics
- Reduced renovation downtime
- Welcoming, customized design

## Why Shaw Contract Hospitality?

- By selecting materials that are sustainably sourced, long-lasting and free of harmful chemicals, hotels can assure guests that their values matter. Shaw Contract Hospitality offers a portfolio of products that satisfy the most stringent sustainability certifications.
- An entire team dedicated to customizing your hospitality project, including design services, visualization, estimating, and install seaming diagrams
- Single point of contact for order entry/monitoring, shipment tracking and expediting, technical services, risk mitigation and problem resolution
- Tailored stocking program based on your forecasting to ensure availability of your standard products and rapid service/reduced lead times

## Product Breadth

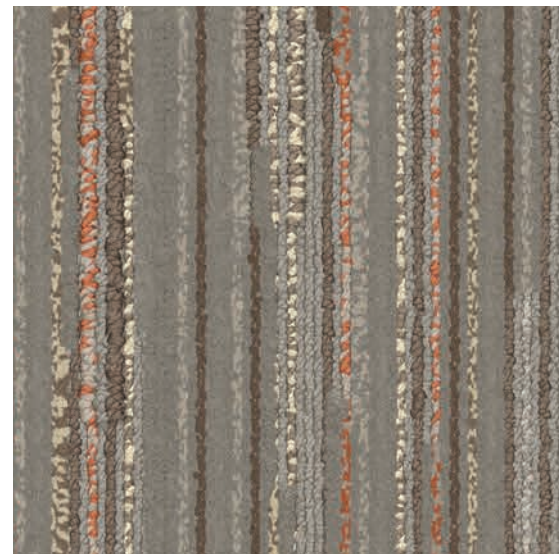
- Area Rugs
- Broadloom
- Carpet Tile
- Hardwood
- LVT
- Sheet
- Bio-based Resilient
- COREtec® Resilient
- Accessories





**Guestroom | C-01**

<b>Style</b>	BS015
<b>Color</b>	Z688G
<b>Product Type</b>	Carpet Tile
<b>Fiber</b>	Eco Solution Q® Nylon
<b>Dye Method</b>	100% Solution Dyed
<b>Construction</b>	Multi-Level Loop Tip Shear
<b>Tufted Weight</b>	26.0 oz/yd <sup>2</sup>   881.57 g/m <sup>2</sup>
<b>Gauge</b>	1/10 in   39.4 per 10 cm
<b>Stitches</b>	10 per in   39 per 10 cm
<b>Size</b>	9 in × 36 in   22.86 cm × 91.44 cm
<b>Backing</b>	Ecologix® (Attached Cushion)
<b>Installation</b>	Direct Glue
<b>Approved Installation Method</b>	Brick
<b>Warranty</b>	Lifetime Commercial Limited



For sample, order BS015 color Z688G.



**Guestroom | C-01 ALT 1**

<b>Style</b>	BS014 – 15’ BS155 – 12’
<b>Color</b>	Z687G
<b>Product Type</b>	Broadloom
<b>Fiber</b>	Eco Solution Q® Nylon
<b>Dye Method</b>	100% Solution Dyed
<b>Construction</b>	Multi-Level Loop Tip Shear
<b>Tufted Weight</b>	32.0 oz/yd <sup>2</sup>   1085.0 g/m <sup>2</sup>
<b>Gauge</b>	1/10 in   39.4 per 10 cm
<b>Stitches</b>	10 per in   39 per 10 cm
<b>Size</b>	15 ft   4.57 m 12 ft   3.66 m
<b>Pattern Repeat</b>	72 in × 108 in   182.90 cm × 274.32 cm
<b>Backing</b>	Classicbac®
<b>Installation</b>	Stretch In
<b>Warranty</b>	10 Year Commercial Limited

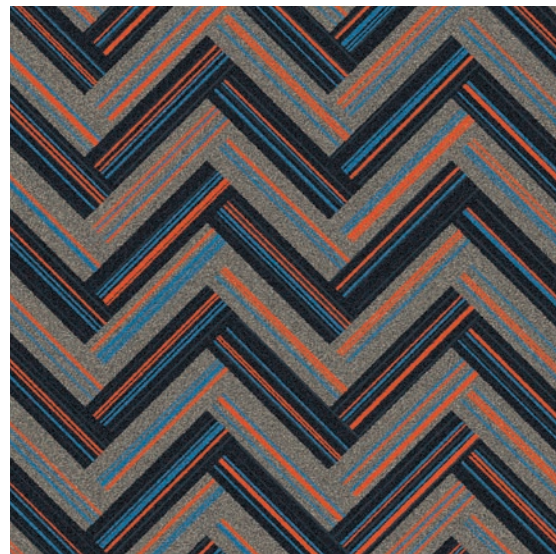


For sample, order BS014 color Z687G.



Lobby | C-10

Style	BS083
Color	Z682R
Product Type	Broadloom
Fiber	Eco Solution Q® Nylon
Dye Method	100% Solution Dyed
Construction	Multi-Level Loop Tip Shear
Tufted Weight	36.0 oz/yd <sup>2</sup>   1220.6 g/m <sup>2</sup>
Gauge	1/10 in   39.4 per 10 cm
Stitches	10 per in   39 per 10 cm
Size	15 ft   4.57 m
Pattern Repeat	90 in × 92 in   228.6 cm × 233.68 cm
Backing	Ultraloc®
Installation	Direct Glue
Warranty	Lifetime Commercial Limited



For sample, order BS083 color Z682R.



Lobby | C-10 ALT 1

Style	BS082
Color	Z674R
Product Type	Broadloom
Fiber	Eco Solution Q® Nylon
Dye Method	100% Dye Injection Print
Construction	Multi-Level Pattern Cut/Loop
Tufted Weight	36.0 oz/yd <sup>2</sup>   1220.6 g/m <sup>2</sup>
Gauge	1/10 in   39.4 per 10 cm
Stitches	11 per in   44 per 10 cm
Size	15 ft   4.57 m
Pattern Repeat	90 in × 92 in   228.6 cm × 233.68 cm
Backing	Classicbac®
Installation	Direct Glue
Warranty	20 Year Commercial Limited

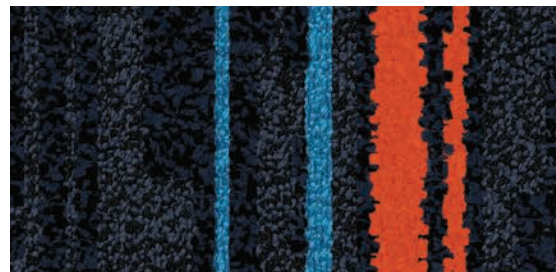


For sample, order BS082 color Z674R.

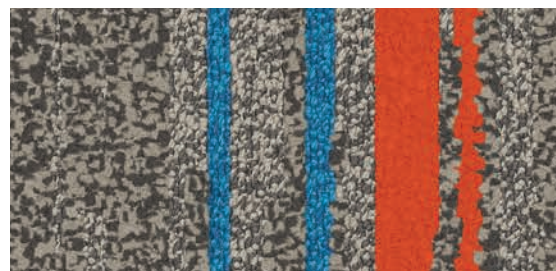


### Lobby | C-10 ALT 2

Style	BS071   BS074
Color	Z621R   Z627R
Product Type	Carpet Tile
Fiber	Eco Solution Q® Nylon
Dye Method	100% Solution Dyed
Construction	Multi-Level Loop Tip Shear
Tufted Weight	30.0 oz/yd²   1017.17 g/m²
Gauge	1/10 in   39.4 per 10 cm
Stitches	9 per in   34 per 10 cm
Size	9 in × 36 in   22.86 cm × 91.44 cm
Backing	Ecologix® (Attached Cushion)
Installation	45° Herringbone Mix
Approved Installation Method	Direct Glue
Warranty	Lifetime Commercial Limited



For sample, order BS071 color Z621R.

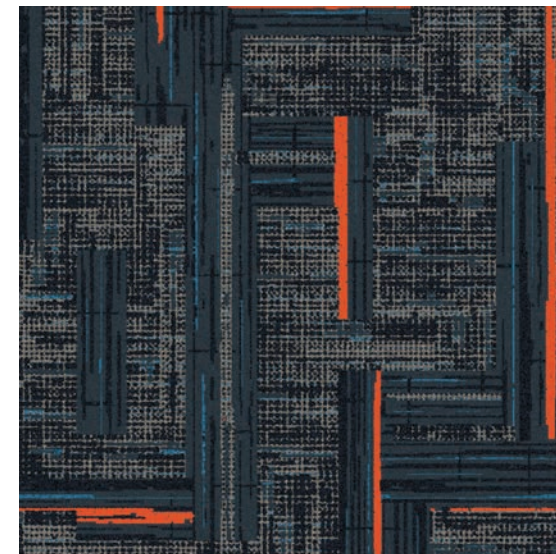


For sample, order BS074 color Z627R.



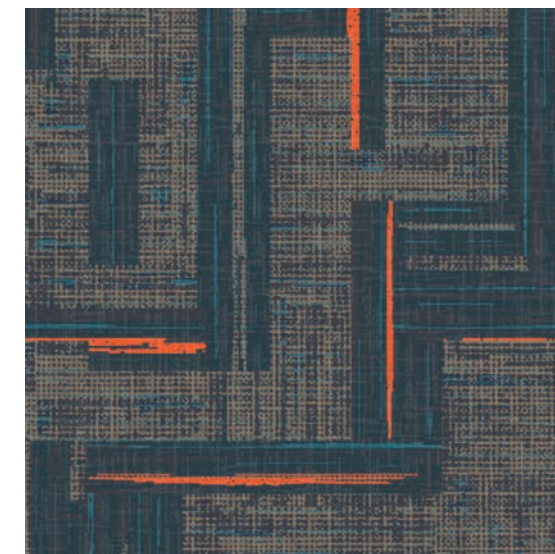
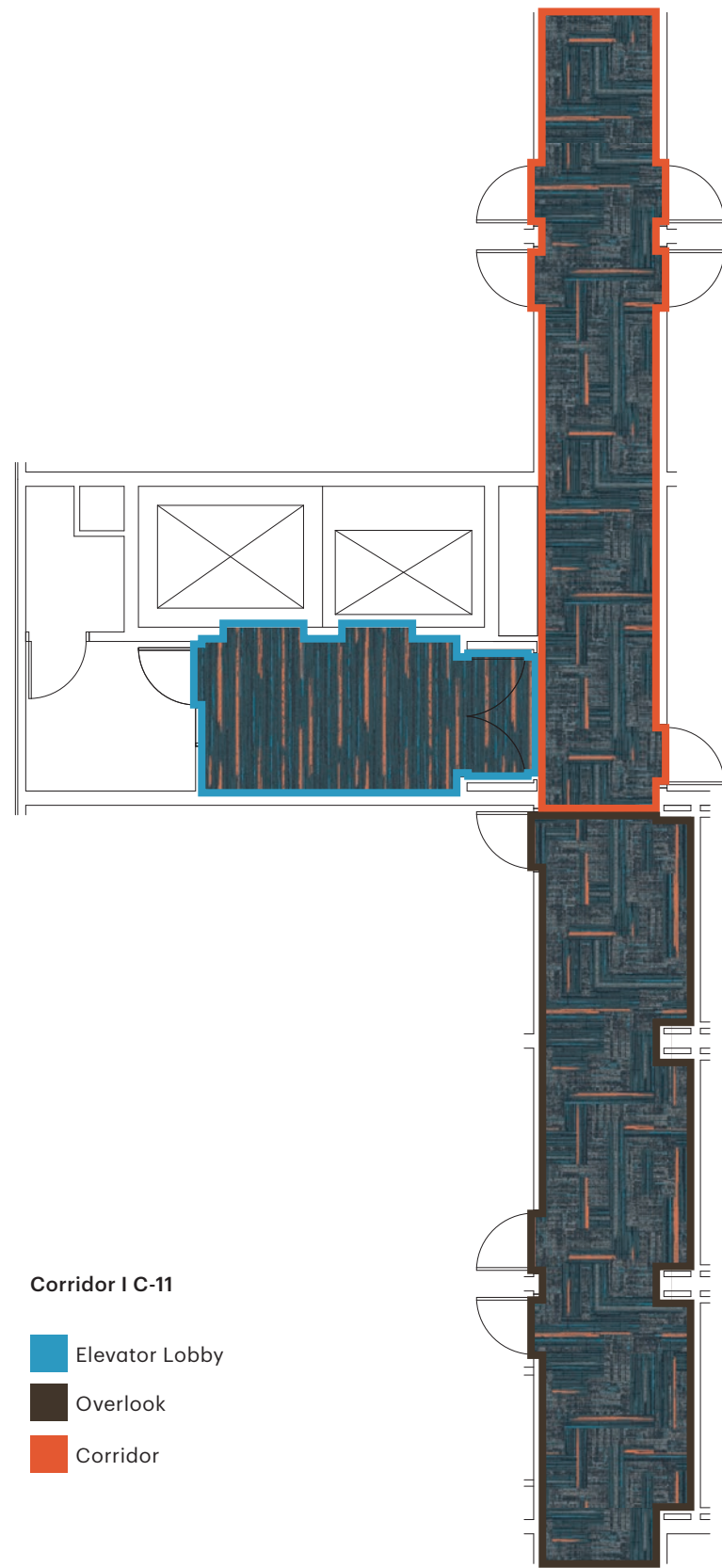
### Corridor | C-11

Style	BS073
Color	Z681R
Product Type	Broadloom
Fiber	Eco Solution Q® Nylon
Dye Method	100% Solution Dyed
Construction	Multi-Level Loop Tip Shear
Tufted Weight	36.0 oz/yd²   1220.6 g/m²
Gauge	1/10 in   39.4 per 10 cm
Stitches	10 per in   39 per 10 cm
Size	15 ft   4.57 m
Pattern Repeat	90 in × 204 in   228.6 cm × 518.16 cm
Backing	Ultraloc®
Install Method	Direct Glue
Warranty	Lifetime Commercial Limited



For sample, order BS073 color Z681R.

Elevator Lobby style BS086 | color Z680R

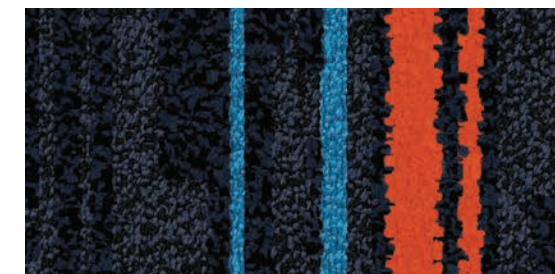
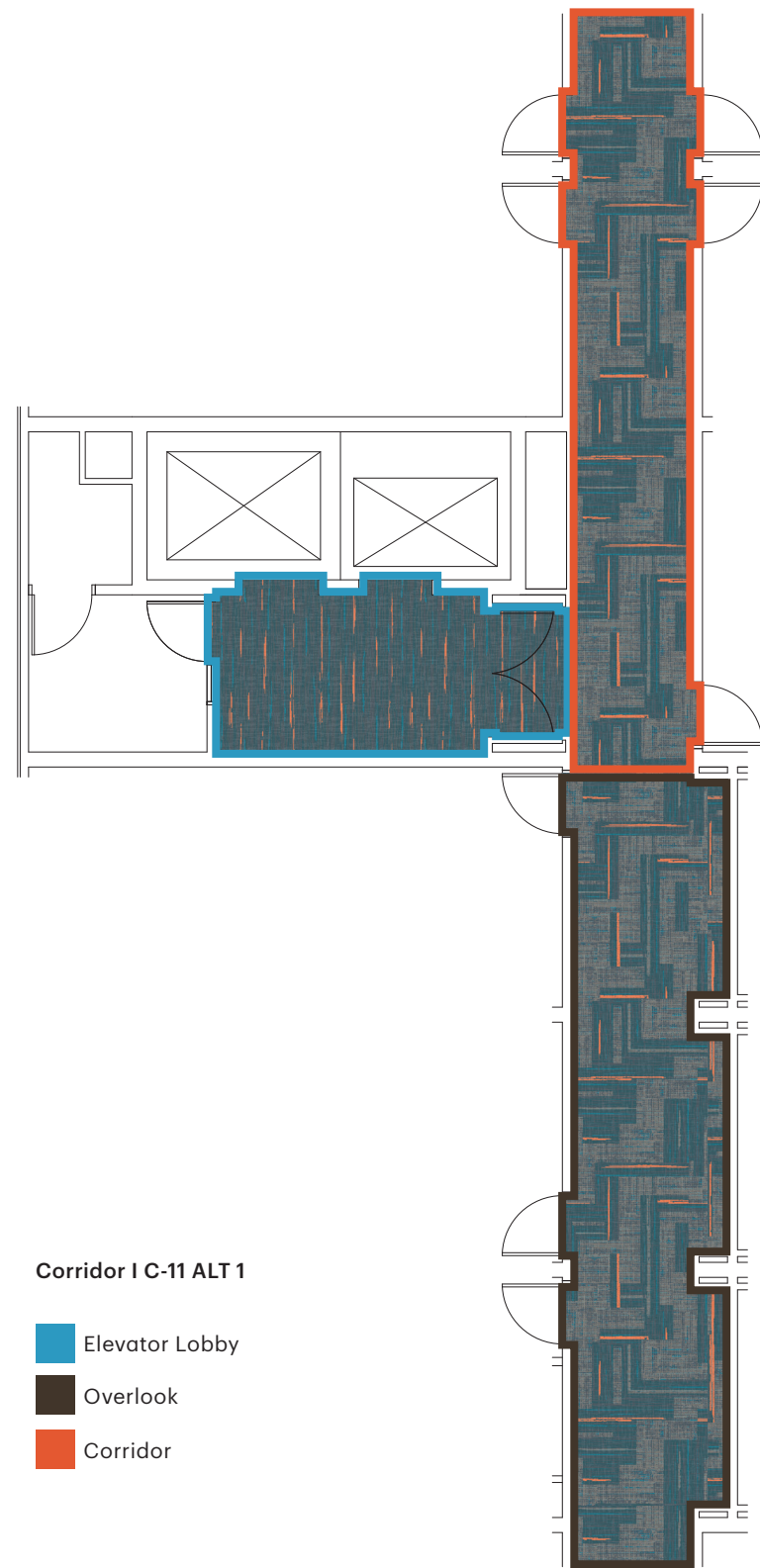


For sample, order BS072 color Z963R.

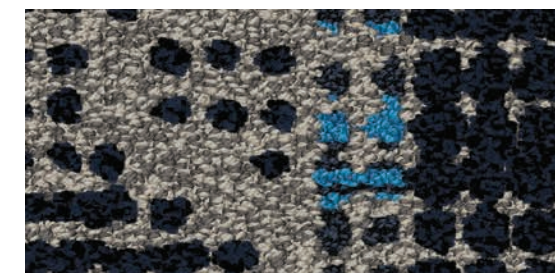
### Corridor | C-11 ALT 1

<b>Style</b>	BS072
<b>Color</b>	Z963R
<b>Product Type</b>	Broadloom
<b>Fiber</b>	Eco Solution Q® Nylon
<b>Dye Method</b>	100% Dye Injection Print
<b>Construction</b>	Multi-Level Pattern Cut/Loop
<b>Tufted Weight</b>	36.0 oz/yd <sup>2</sup>   1220.6 g/m <sup>2</sup>
<b>Gauge</b>	1/10 in   39.4 per 10 cm
<b>Stitches</b>	11 per in   44 per 10 cm
<b>Size</b>	15 ft   4.57
<b>Pattern Repeat</b>	90 in × 204 in   228.6 cm × 518.16 cm
<b>Backing</b>	Classicbac®
<b>Installation</b>	Direct Glue
<b>Warranty</b>	20 Year Commercial Limited

Elevator Lobby style BS085 | color Z962R



For sample, order BS071 color Z621R.

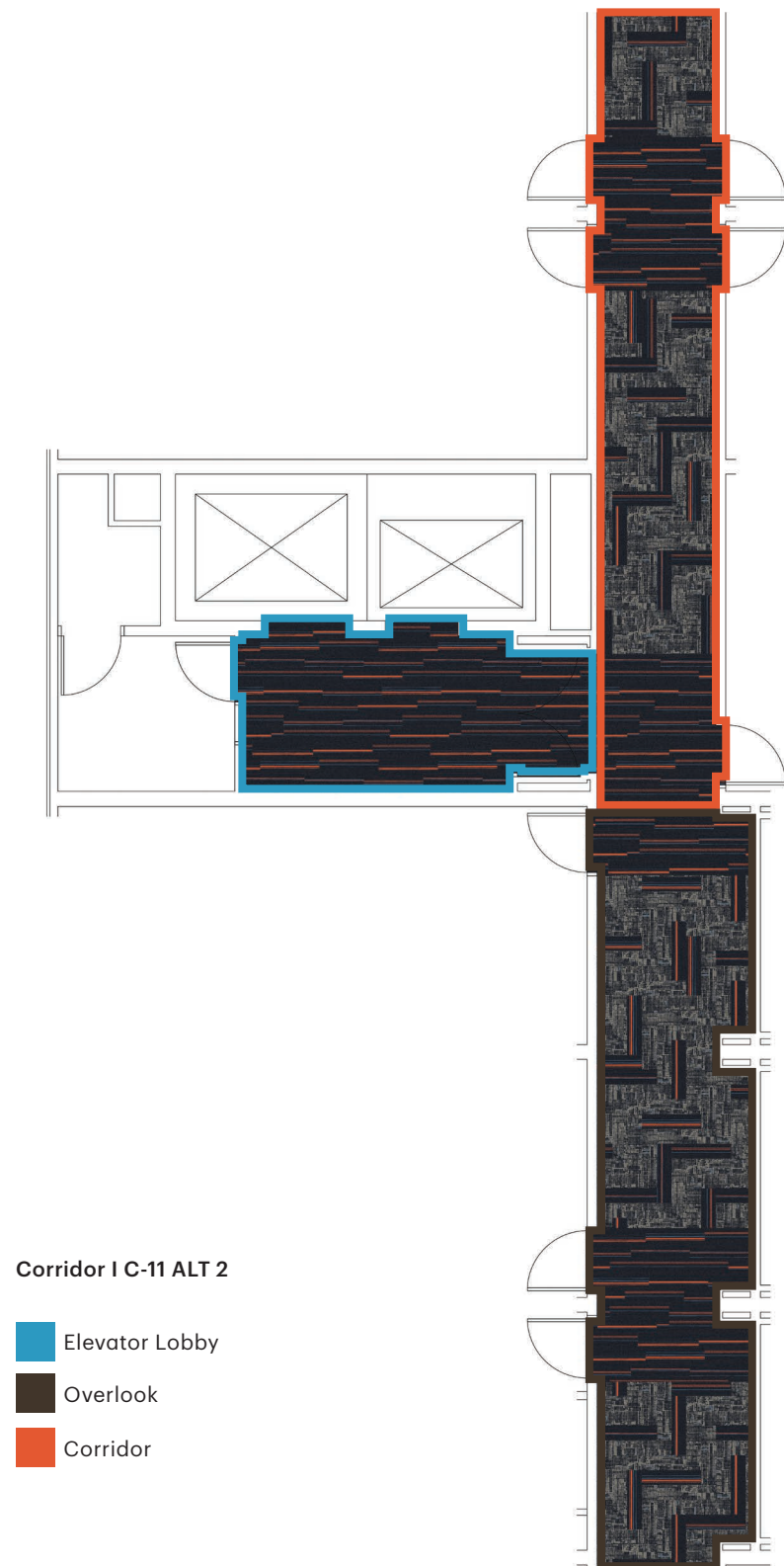


For sample, order BS070 color Z622R.

## Corridor | C-11 ALT 2

<b>Style</b>	BS071   BS070
<b>Color</b>	Z621R   Z622R
<b>Product Type</b>	Carpet Tile
<b>Fiber</b>	Eco Solution Q® Nylon
<b>Dye Method</b>	100% Solution Dyed
<b>Construction</b>	Multi-Level Loop Tip Shear
<b>Tufted Weight</b>	30.0 oz/yd <sup>2</sup>   1017.17 g/m <sup>2</sup>
<b>Gauge</b>	1/10 in   39.4 per 10 cm
<b>Stitches</b>	9 per in   34 per 10 cm
<b>Size</b>	9 in × 36 in   22.86 cm × 91.44 cm
<b>Backing</b>	Ecologix® (Attached Cushion)
<b>Installation</b>	Direct Glue
<b>Approved Installation Method</b>	BS071   Stagger + Herringbone BS070   Herringbone Mix
<b>Warranty</b>	Lifetime Commercial Limited

Elevator Lobby style BS071 | color Z621R



### Meeting Room | C-12

<b>Style</b>	BS079
<b>Color</b>	Z760R
<b>Product Type</b>	Broadloom
<b>Fiber</b>	Eco Solution Q® Nylon
<b>Dye Method</b>	100% Solution Dyed
<b>Construction</b>	Multi-Level Loop Tip Shear
<b>Tufted Weight</b>	36.0 oz/yd²   1220.6 g/m²
<b>Gauge</b>	1/10 in   39.4 per 10 cm
<b>Stitches</b>	10 per in   39 per 10 cm
<b>Size</b>	15 ft   4.57 m
<b>Pattern Repeat</b>	180 in × 180 in   457.2 cm × 457.2 cm
<b>Backing</b>	Ultraloc®
<b>Installation</b>	Direct Glue
<b>Warranty</b>	Lifetime Commercial Limited

For sample, order BS079 color Z760R.





Meeting Room | C-12 ALT 1

Style	BS078
Color	Z759R
Product Type	Broadloom
Fiber	Eco Solution Q® Nylon
Dye Method	100% Dye Injection Print
Construction	Multi-Level Pattern Cut/Loop
Tufted Weight	36.0 oz/yd <sup>2</sup>   1220.6 g/m <sup>2</sup>
Gauge	1/10 in   39.4 per 10 cm
Stitches	11 per in   44 per 10 cm
Size	15 ft   4.57 m
Pattern Repeat	180 in × 180 in   457.2 cm × 457.2 cm
Backing	Classicbac®
Installation	Direct Glue
Warranty	20 Year Commercial Limited

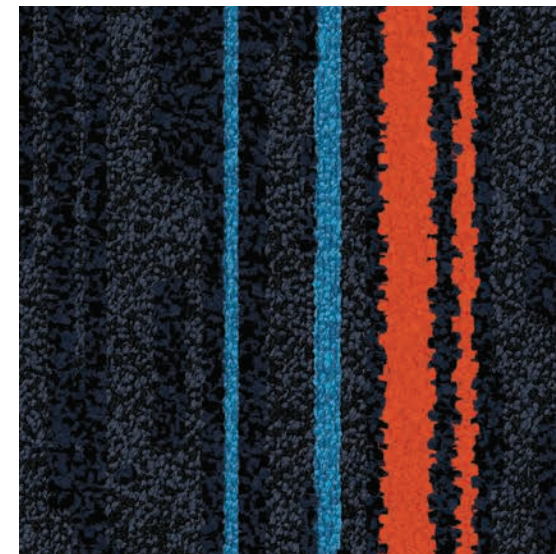


For sample, order BS078 color Z759R.



Meeting Room | C-12 ALT 2

Style	BS071
Color	Z621R
Product Type	Carpet Tile
Fiber	Eco Solution Q® Nylon
Dye Method	100% Solution Dyed
Construction	Multi-Level Loop Tip Shear
Tufted Weight	30.0 oz/yd <sup>2</sup>   1017.17 g/m <sup>2</sup>
Gauge	1/10 in   39.4 per 10 cm
Stitches	9 per in   34 per 10 cm
Size	9 in × 36 in   22.86 cm × 91.44 cm
Backing	Ecologix® (Attached Cushion)
Installation	Direct Glue
Approved Installation Method	Basketweave
Warranty	Lifetime Commercial Limited

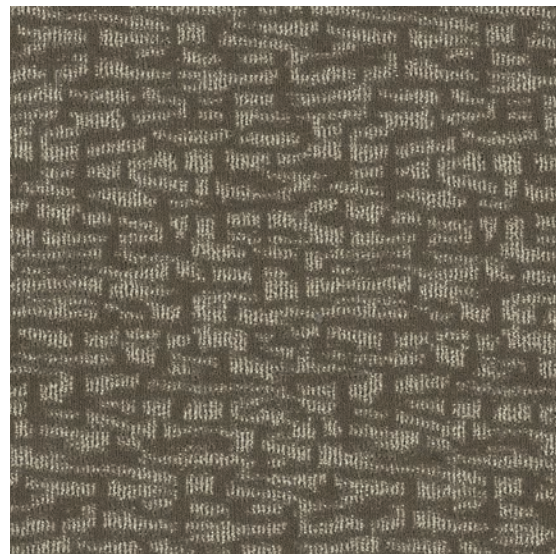


For sample, order BS071 color Z621R.



### Back of House | C-13

<b>Style</b>	BS323
<b>Color</b>	11760
<b>Product Type</b>	Broadloom
<b>Fiber</b>	Eco Solution Q® Nylon
<b>Dye Method</b>	100% Solution Dyed
<b>Construction</b>	Multi-Level Pattern Cut/Loop
<b>Tufted Weight</b>	32.0 oz/yd <sup>2</sup>   1085.0 g/m <sup>2</sup>
<b>Gauge</b>	1/10 inch   39.4 per 10 cm
<b>Stitches</b>	12 per inch   47 per 10 cm
<b>Size</b>	12 ft   3.66 m
<b>Pattern Repeat</b>	12 in × 18 in   30.48 cm × 45.72 cm
<b>Backing</b>	Classicbac®
<b>Installation</b>	Direct Glue
<b>Warranty</b>	10 Year Commercial Limited



For sample, order BS323 color 11760.



### Back of House | C-13 ALT 1

<b>Style</b>	BS152
<b>Color</b>	72759
<b>Product Type</b>	Carpet Tile
<b>Fiber</b>	Eco Solution Q® Nylon
<b>Dye Method</b>	100% Solution Dyed
<b>Construction</b>	Multi-Level Pattern Loop
<b>Tufted Weight</b>	17.0 oz/yd <sup>2</sup>   576.41 g/m <sup>2</sup>
<b>Gauge</b>	1/12 in   47.2 per 10 cm
<b>Stitches</b>	10 per in   39 per 10 cm
<b>Size</b>	9 in × 36 in   22.86 cm × 91.44 cm
<b>Backing</b>	EcoWorx® Tile
<b>Installation</b>	Direct Glue
<b>Approved Installation Method</b>	Monolithic, Ashlar, Stagger, Herringbone, Brick
<b>Warranty</b>	Lifetime Commercial Limited



For sample, order BS152 color 72759.



### Employee Lounge | LVT-10

<b>Style</b>	BS250
<b>Color</b>	84429
<b>Construction</b>	Commercial Luxury Vinyl Tile
<b>Wear Layer Thickness</b>	20 mil   0.02 in   0.51 mm
<b>Overall Thickness</b>	0.098 in   2.5 mm
<b>Nominal Dimensions</b>	12 in × 24 in   30 cm × 61 cm
<b>Actual Dimensions</b>	12 in × 24 in   30.48 cm × 60.96 cm
<b>Area Per Box</b>	36 sq ft   18 pcs
<b>Installation</b>	Direct Glue
<b>Approved Installation Method</b>	Ashlar
<b>Warranty</b>	15 Year Commercial Limited

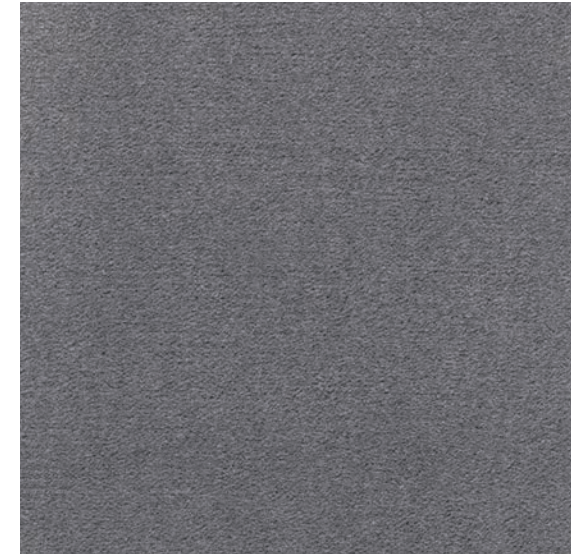


For sample, order BS250 color 84429.

### Additional Product Options

#### 4" Carpet Base – Corridor + Meeting Room

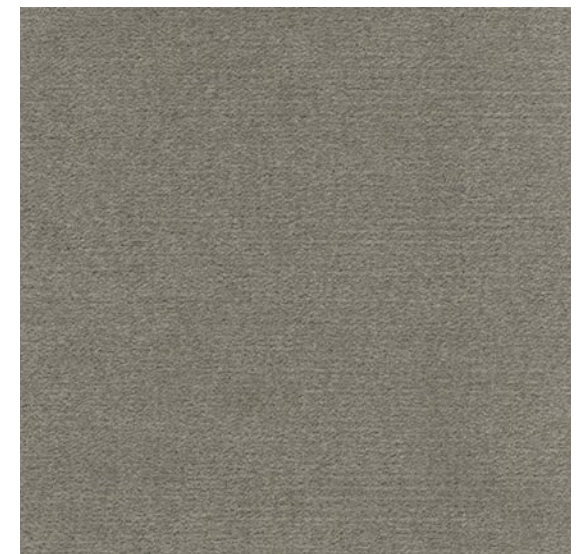
<b>Style</b>	BS358
<b>Color</b>	32583
<b>Dye Method</b>	100% Piece Dyed
<b>Construction</b>	Solid Cut Pile
<b>Size</b>	12 ft



For sample, order BS358 color 32583.

#### 4" Carpet Base – Corridor + Meeting Room (Print)

<b>Style</b>	BS359
<b>Color</b>	32592
<b>Dye Method</b>	100% Piece Dyed
<b>Construction</b>	Solid Cut Pile
<b>Size</b>	12 ft



For sample, order BS359 color 32592.

## Additional Product Options

---

### Guestroom Vinyl Base | B-01

---

Style	BS531
Color	00770
Product Type	4.5 in Vinyl Base
Construction	TPR (Thermoplastic Rubber)
Actual Dimensions	96 in length × 4.5 in width
Linear Ft Per Box	48
Pieces Per Box	6
Warranty	5 Year Commercial Limited



For sample, order BS531 color 00770.

### Lobby, Meeting Room, Corridor, Fitness & BOH Vinyl Base | B-10, B-11

---

Style	BS532
Color	00550
Product Type	4.5 in Vinyl Base
Construction	TPR (Thermoplastic Rubber)
Actual Dimensions	96 in length × 4.5 in width
Linear Ft Per Box	48
Pieces Per Box	6
Warranty	5 Year Commercial Limited



For sample, order BS532 color 00550.

### Cushion – Guestroom

---

Style	BS119
Weight	32.0 oz
Thickness	0.312 in
Density	8.5 lbs
Square Yards Per Roll	40

For sample, order BS119.

### Cushion – Public Space + Corridor

---

Style	BS120
Weight	47.0 oz
Thickness	0.20 in
Density	19 lbs
Square Yards Per Roll	30

For sample, order BS120.

## Additional Product Options

---

### Broadloom Adhesive

---

Style	H1000
Description	LokWorx+ Broadloom Adhesive   4 gallon pail
Spread Rate	8-10 sy per gallon

### Carpet Tile Adhesive

---

Style	N5000
Description	LokWorx+ Carpet Tile Adhesive   4 gallon pail
Spread Rate	28-33 sy per gallon

### Seam Sealer

---

Style	H4000
Description	Shaw 4000   1 quart
Spread Rate	550-600 lf per quart

### LVT Adhesive

---

Style	109VS
Description	Shaw 200   4 gallon pail
Spread Rate	175-225 sf per gallon

### Cove Base Adhesive (Tube)

---

Style	141VS
Description	Cove base adhesive   30 oz per tube   12 tubes per box
Spread Rate	55-60 lf per tube

### Cove Base Adhesive

---

Style	166VS
Description	Cove base adhesive   1 gallon pail
Spread Rate	240 lf per gallon

