

FLOORING STANDARDS

# Hampton Inn Kinetic Scheme

ACCOUNT MANAGER

**David Burn**

[dburn1@mac.com](mailto:dburn1@mac.com)

301.520.9360

CUSTOMER SERVICE

**Natashia Kernea**

[natashia.kernea@shawinc.com](mailto:natashia.kernea@shawinc.com)

706.217.3440

VP STRATEGIC ACCOUNTS

**Desiree Perkins**

[desiree.perkins@shawcontract.com](mailto:desiree.perkins@shawcontract.com)

404.452.3055



**ShawContract**<sup>®</sup>  
hospitality



## Our Sustainability Story

Everyone should have access to sustainable products for the places where we heal, learn, rest and work. Our brand vision, Smarter Impact, is our call to action to share insights and solutions that help you act on your power for positive change, especially when it comes to making sustainable choices.

Our view of sustainability encompasses not only the environmental health of our products and our operations, but also how our products impact human experience. For more than 20 years, Shaw Contract Hospitality has demonstrated our commitment to the Cradle to Cradle® design philosophy and the Cradle to Cradle Certified™ Products Program. More than 90% of the products we manufacture have achieved this prestigious multi-attribute certification, protecting humans and the environment.



Declare.

EPD®



## Attributes

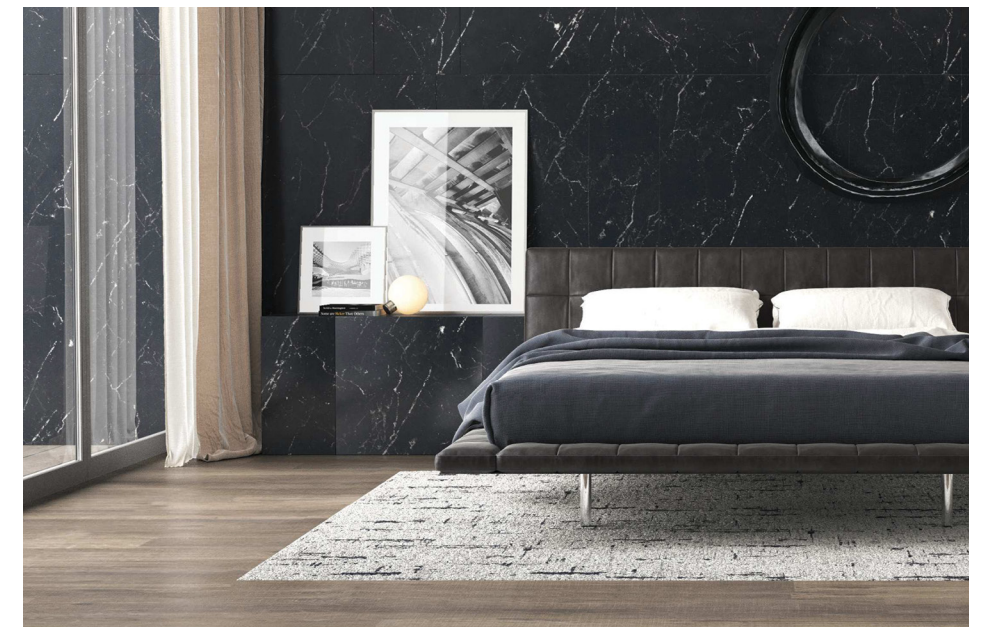
- Guest comfort and experience
- High-traffic durability
- Housekeeping support and cleanliness
- Improved acoustics
- Reduced renovation downtime
- Welcoming, customized design

## Why Shaw Contract Hospitality?

- By selecting materials that are sustainably sourced, long-lasting and free of harmful chemicals, hotels can assure guests that their values matter. Shaw Contract Hospitality offers a portfolio of products that satisfy the most stringent sustainability certifications.
- An entire team dedicated to customizing your hospitality project, including design services, visualization, estimating, and install seaming diagrams
- Single point of contact for order entry/monitoring, shipment tracking and expediting, technical services, risk mitigation and problem resolution
- Tailored stocking program based on your forecasting to ensure availability of your standard products and rapid service/reduced lead times

## Product Breadth

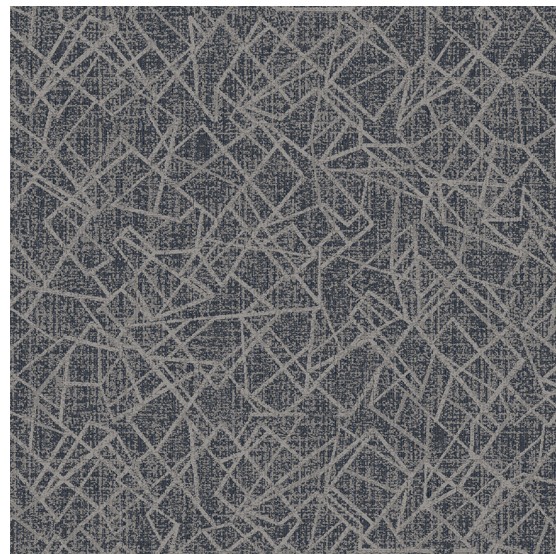
- Area Rugs
- Broadloom
- Carpet Tile
- Hardwood
- LVT
- Sheet
- Bio-based Resilient
- COREtec® Resilient
- Accessories





**Broadloom Carpet @ Guestroom | CP-01**

<b>Style</b>	BS782
<b>Color</b>	F1338
<b>Product Type</b>	Broadloom
<b>Fiber</b>	Eco Solution Q® Nylon
<b>Dye Method</b>	100% Solution Dyed
<b>Construction</b>	Multi-Tuft Full Repeat Tip Shear
<b>Tufted Weight</b>	32 oz/yd <sup>2</sup>   1085.01 g/m <sup>2</sup>
<b>Gauge</b>	1/10 in   39.37 per 10 cm
<b>Stitches</b>	12.5 per in   49.5 per 10 cm
<b>Size</b>	15 ft   4.57 m
<b>Pattern Repeat</b>	180 in x 190.8 in   457.2 cm x 484.63 cm
<b>Backing</b>	ClassicBac®
<b>Installation</b>	<u>Stretch-In</u>
<b>Warranty</b>	<u>10 Year Commercial Limited</u>

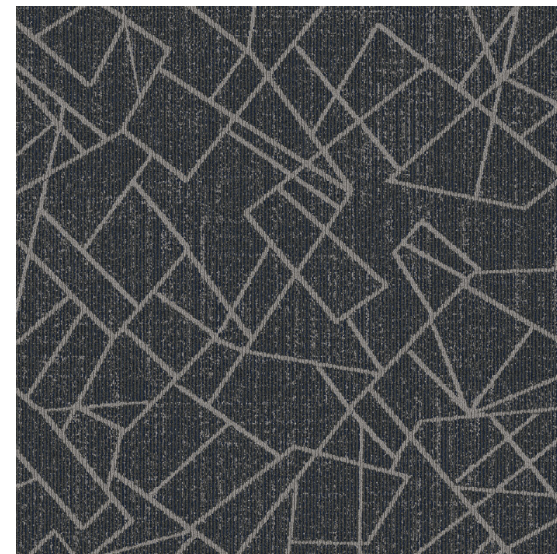


For sample, order BS782 color F1338.



**Carpet Tile @ Guestroom | CP-01 ALT**

<b>Style</b>	BS852
<b>Color</b>	F5140
<b>Product Type</b>	Carpet Tile
<b>Fiber</b>	Eco Solution Q® Nylon
<b>Dye Method</b>	100% Solution Dyed
<b>Construction</b>	Multi-Tuft Full Repeat Tip Shear
<b>Tufted Weight</b>	22 oz/yd <sup>2</sup>   745.95 g/m <sup>2</sup>
<b>Gauge</b>	1/10 in   39.37 per 10 cm
<b>Stitches</b>	10.83 per in   42.64 per 10 cm
<b>Size</b>	24 in x 24 in   60.96 cm x 60.96 cm
<b>Backing</b>	Ecologix® Tile
<b>Installation</b>	<u>Direct Glue</u>
<b>Approved Installation Method</b>	Monolithic
<b>Warranty</b>	<u>Lifetime Commercial Limited</u>

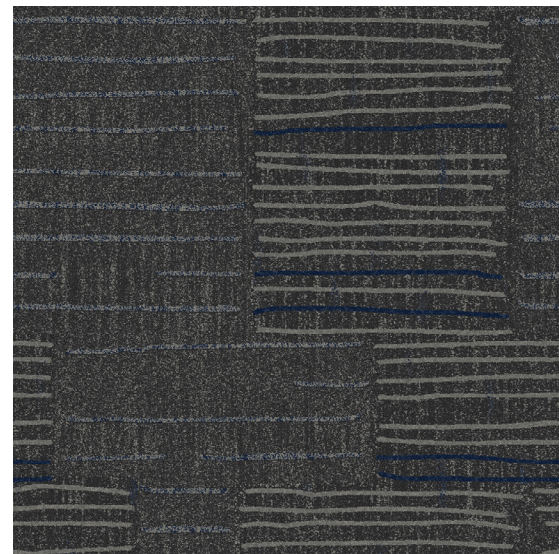


For sample, order BS852 color F5140.



### Broadloom Carpet @ Corridor | CP-10

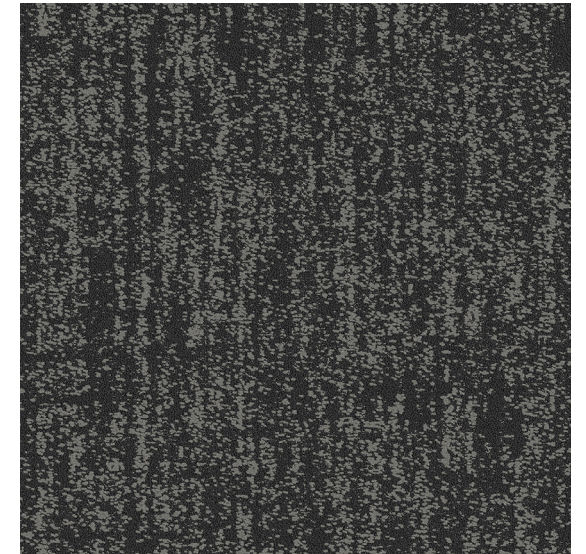
Style	BS825
Color	F4267
Product Type	Broadloom
Fiber	Eco Solution Q® Nylon
Dye Method	100% Solution Dyed
Construction	Multi-Level Loop Tip Shear
Tufted Weight	36 oz/yd²   1220.64 g/m²
Gauge	1/10 in   39.37 per 10 cm
Stitches	10 per in   39.37 per 10 cm
Size	12 ft   3.66 m
Pattern Repeat	72 in x 220.8 in   182.88 cm x 560.83 cm
Backing	Ultraloc®
Installation	<a href="#">Direct Glue</a>
Warranty	<a href="#">Lifetime Commercial Limited</a>



For sample, order BS825 color F4267.

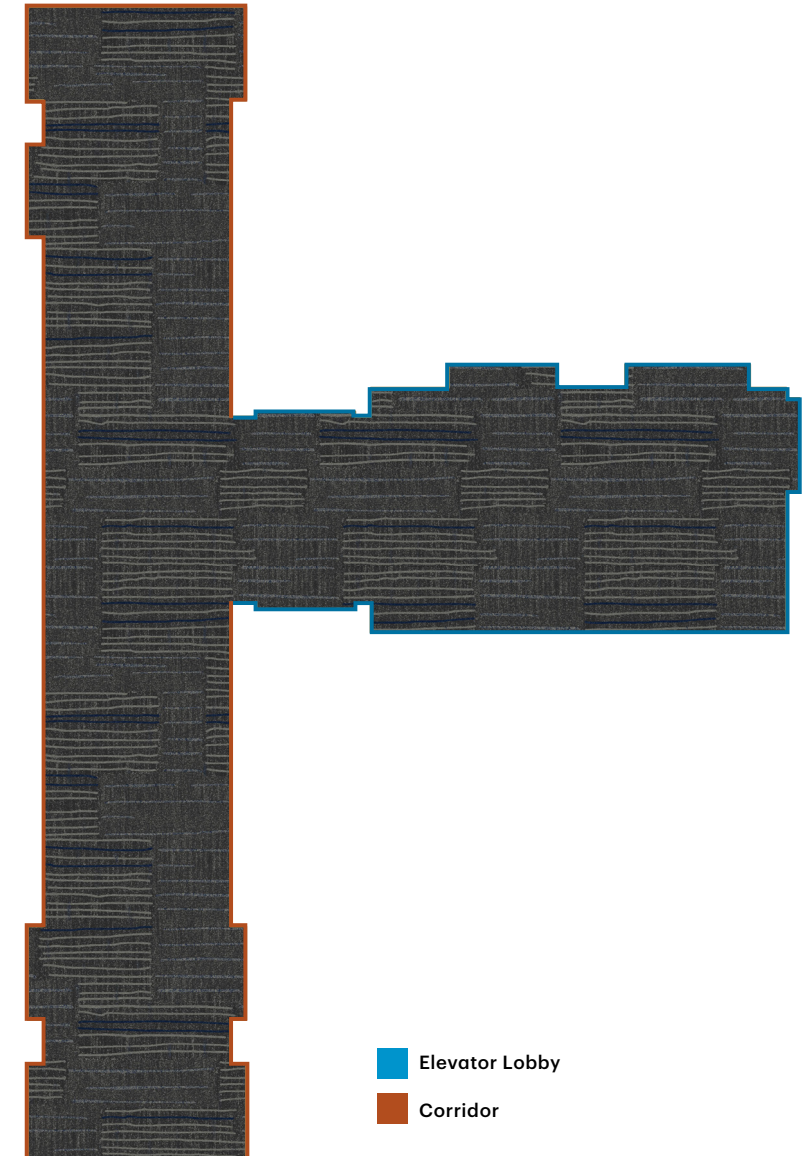
### Broadloom Carpet @ Door Fill | CP-10.1

Style	BS967
Color	G1493
Product Type	Broadloom
Fiber	Eco Solution Q® Nylon
Dye Method	100% Solution Dyed
Construction	Multi-Level Loop Tip Shear
Tufted Weight	36 oz/yd²   1220.64 g/m²
Gauge	1/10 in   39.37 per 10 cm
Stitches	10 per in   39.37 per 10 cm
Size	12 ft   3.66 m
Pattern Repeat	48 in x 64 in   121.92 cm x 162.56 cm
Backing	Ultraloc®
Installation	<a href="#">Direct Glue</a>
Warranty	<a href="#">Lifetime Commercial Limited</a>



For sample, order BS967 color G1493.

### Broadloom Carpet @ Corridor | CP-10



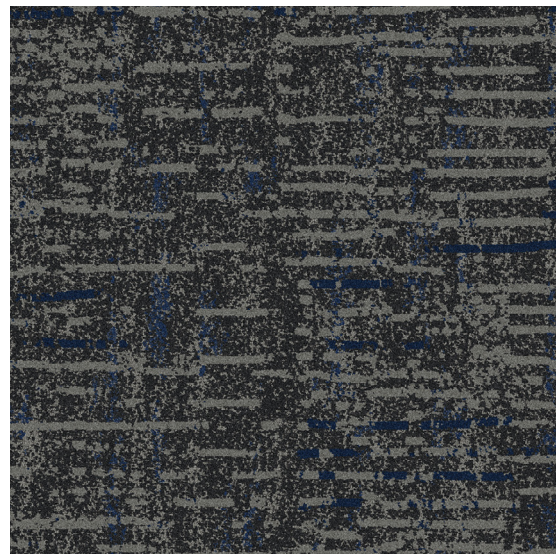
■ Elevator Lobby  
■ Corridor



## Carpet Tile @ Corridor | CP-10 ALT

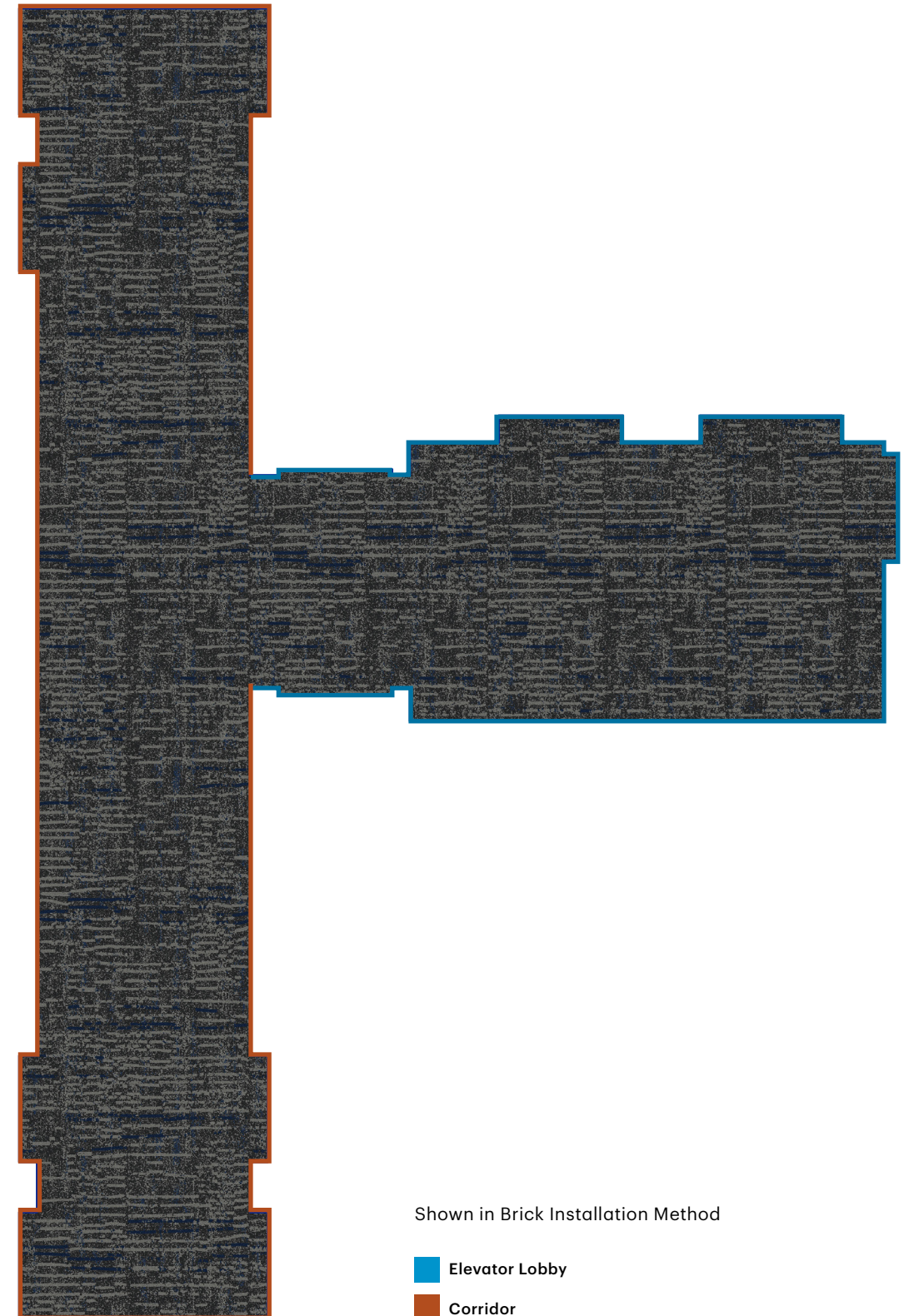
Style	BS853
Color	F4988
Product Type	Carpet Tile
Fiber	Eco Solution Q® Nylon
Dye Method	100% Solution Dyed
Construction	Multi-Level Loop Tip Shear
Tufted Weight	30 oz/yd²   1017.2 g/m²
Gauge	1/10 in   39.37 per 10 cm
Stitches	9.33 per in   36.73 per 10 cm
Size	24 in × 24 in   60.96 cm × 60.96 cm
Backing	Ecologix® Tile
Installation	<a href="#">Direct Glue</a>
Approved Installation Method	Brick, Ashlar, or 1/3*
Warranty	<a href="#">Lifetime Commercial Limited</a>

\*Shown in Brick



For sample, order BS853 color F4988.

## Carpet Tile @ Corridor | CP-10 ALT



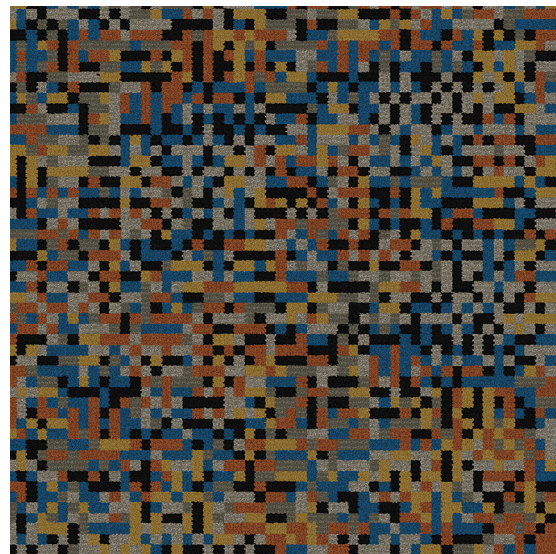
Shown in Brick Installation Method

- Elevator Lobby
- Corridor



**Inset Broadloom Carpet @ Lobby | CP-11**

Style	BS860
Color	F4690
Product Type	Broadloom
Fiber	Eco Solution Q® Nylon
Dye Method	100% Solution Dyed
Construction	Multi-Level Loop Tip Shear
Tufted Weight	36 oz/yd²   1220.64 g/m²
Gauge	1/10 in   39.37 per 10 cm
Stitches	10 per in   39.37 per 10 cm
Size	15 ft   4.57 m
Pattern Repeat	90 in × 91.2 in   228.6 cm × 231.65 cm
Backing	Ultraloc®
Installation	<a href="#">Direct Glue</a>
Warranty	<a href="#">Lifetime Commercial Limited</a>

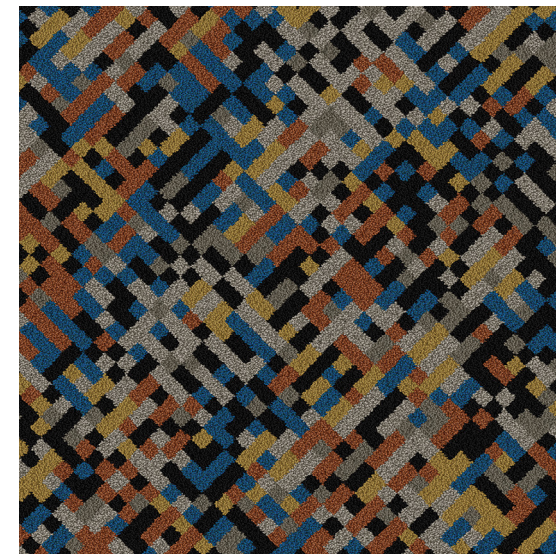


For sample, order BS860 color F4690.



**Inset Carpet Tile @ Lobby | CP-11 ALT**

Style	BS854
Color	F5151
Product Type	Carpet Tile
Fiber	Eco Solution Q® Nylon
Dye Method	100% Solution Dyed
Construction	Multi-Level Loop Tip Shear
Tufted Weight	30 oz/yd²   1017.2 g/m²
Gauge	1/10 in   39.37 per 10 cm
Stitches	9.83 per in   38.7 per 10 cm
Size	24 in × 24 in   60.96 cm × 60.96 cm
Backing	Ecologix® Tile
Installation	<a href="#">Direct Glue</a>
Approved Installation Method	Monolithic
Warranty	<a href="#">Lifetime Commercial Limited</a>



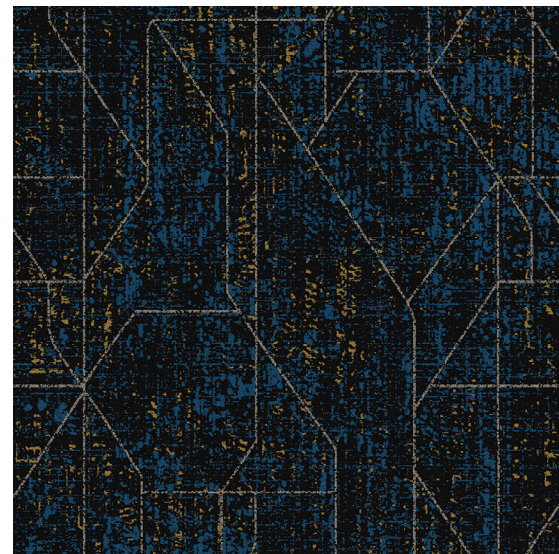
For sample, order BS854 color F5151.

\*Shown in Brick



### Broadloom Carpet @ Flex Seating & Optional Meeting Space | CP-12

<b>Style</b>	BS855
<b>Color</b>	F4696
<b>Product Type</b>	Broadloom
<b>Fiber</b>	Eco Solution Q® Nylon
<b>Dye Method</b>	100% Solution Dyed
<b>Construction</b>	Multi-Level Loop Tip Shear
<b>Tufted Weight</b>	36 oz/yd²   1220.64 g/m²
<b>Gauge</b>	1/10 in   39.37 per 10 cm
<b>Stitches</b>	7.83 per in   30.83 per 10 cm
<b>Size</b>	15 ft   4.57 m
<b>Pattern Repeat</b>	90 in × 153.6 in   228.6 cm × 390.14 cm
<b>Backing</b>	Ultraloc®
<b>Installation</b>	<a href="#">Direct Glue</a>
<b>Warranty</b>	<a href="#">Lifetime Commercial Limited</a>

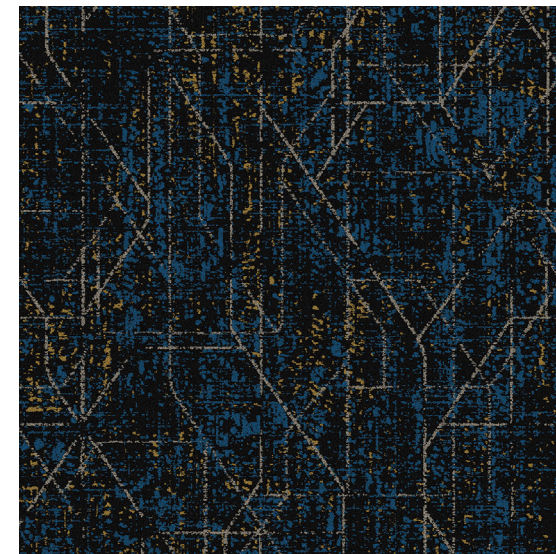


For sample, order BS855 color F4696.

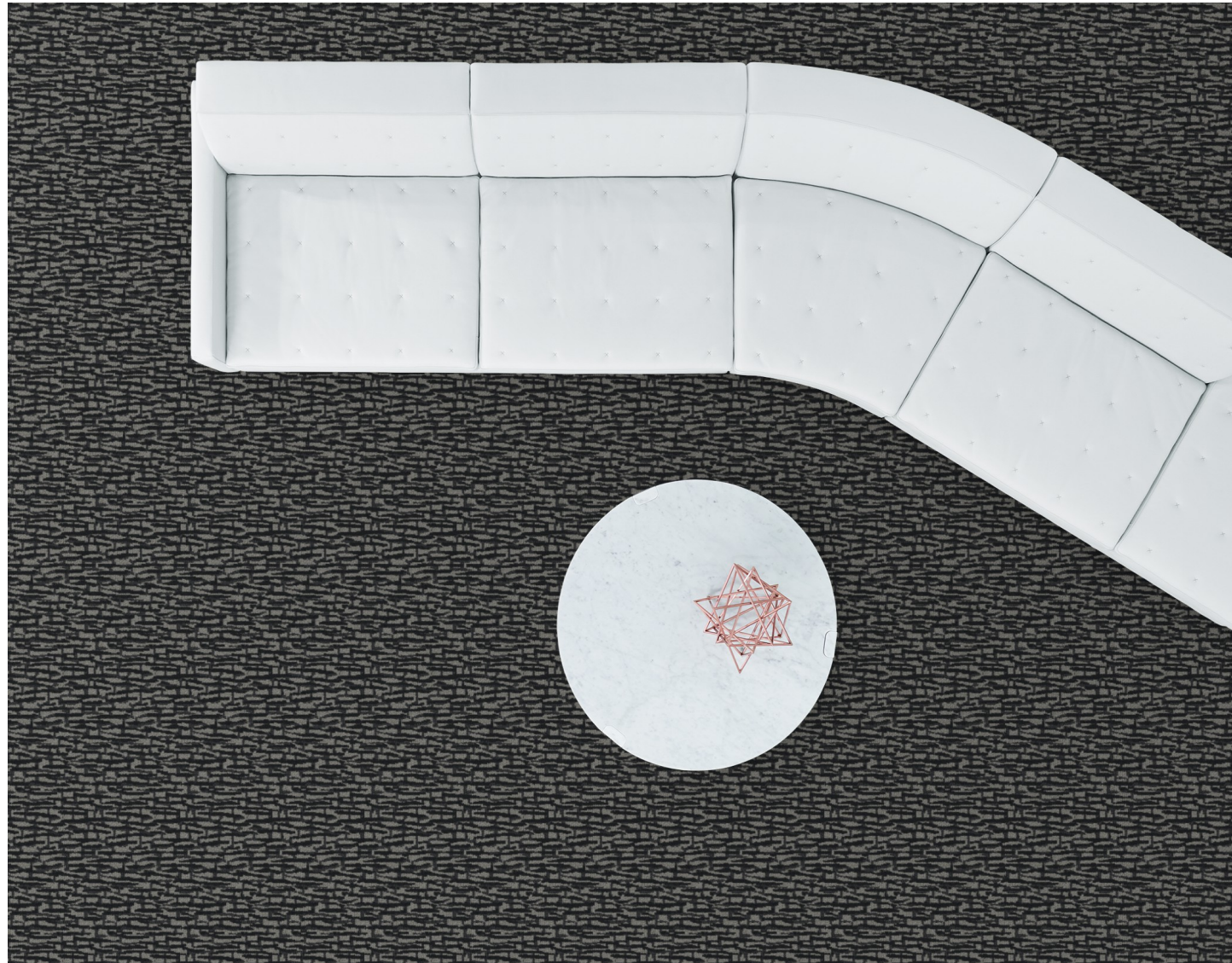


### Carpet Tile @ Flex Seating & Optional Meeting Space | CP-12 ALT

<b>Style</b>	BS856
<b>Color</b>	F5177
<b>Product Type</b>	Carpet Tile
<b>Fiber</b>	Eco Solution Q® Nylon
<b>Dye Method</b>	100% Solution Dyed
<b>Construction</b>	Multi-Level Loop Tip Shear
<b>Tufted Weight</b>	30 oz/yd²   1017.2 g/m²
<b>Gauge</b>	1/10 in   39.37 per 10 cm
<b>Stitches</b>	9.83 per in   38.7 per 10 cm
<b>Size</b>	24 in × 24 in   60.96 cm × 60.96 cm
<b>Backing</b>	Ecologix® Tile
<b>Installation</b>	<a href="#">Direct Glue</a>
<b>Approved Installation Method</b>	Monolithic
<b>Warranty</b>	<a href="#">Lifetime Commercial Limited</a>



For sample, order BS856 color F5177.

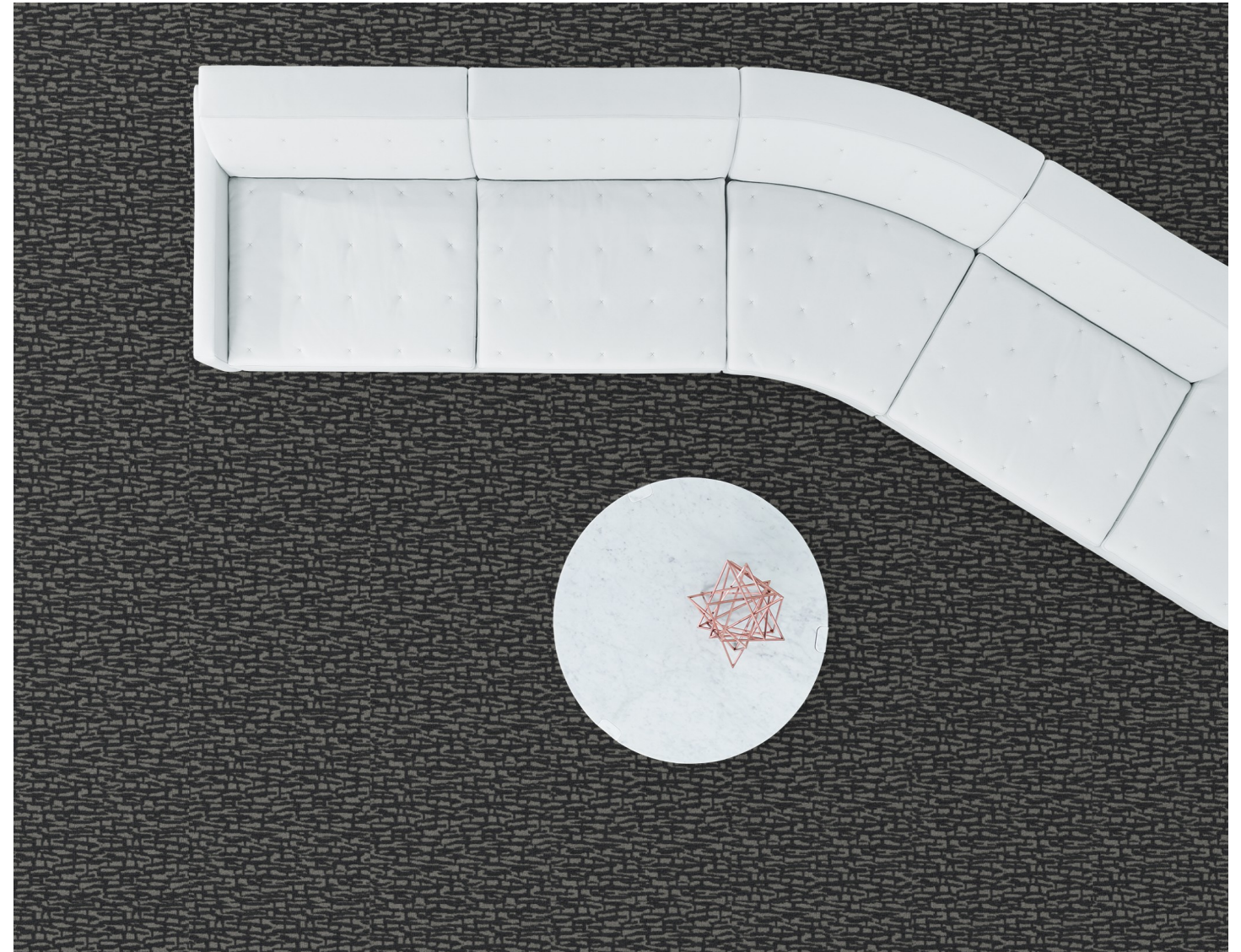


### Broadloom Carpet @ BOH & Stairwells | CP-13

<b>Style</b>	BS826
<b>Color</b>	F1033
<b>Product Type</b>	Broadloom
<b>Fiber</b>	Eco Solution Q® Nylon
<b>Dye Method</b>	100% Solution Dyed
<b>Construction</b>	Multi-Level Loop Tip Shear
<b>Tufted Weight</b>	32 oz/yd²   1085.01 g/m²
<b>Gauge</b>	1/10 in   39.37 per 10 cm
<b>Stitches</b>	12 per in   47.24 per 10 cm
<b>Size</b>	12 ft   3.66 m
<b>Pattern Repeat</b>	12 in x 18 in   30.48 cm x 45.72 cm
<b>Backing</b>	Classicbac®
<b>Installation</b>	<a href="#">Direct Glue</a>
<b>Warranty</b>	<a href="#">10 Year Commercial Limited</a>



For sample, order BS826 color F1033.



### Carpet Tile @ BOH & Stairwells | CP-13 ALT

<b>Style</b>	BS857
<b>Color</b>	F4700
<b>Product Type</b>	Carpet Tile
<b>Fiber</b>	Eco Solution Q® Nylon
<b>Dye Method</b>	100% Solution Dyed
<b>Construction</b>	Full Repeat Double Scroll
<b>Tufted Weight</b>	21 oz/yd²   712.04 g/m²
<b>Gauge</b>	1/10 in   39.37 per 10 cm
<b>Stitches</b>	11.67 per in   45.94 per 10 cm
<b>Size</b>	24 in x 24 in   60.96 cm x 60.96 cm
<b>Backing</b>	Ecologix® Tile
<b>Installation</b>	<a href="#">Direct Glue</a>
<b>Approved Installation Method</b>	Monolithic
<b>Warranty</b>	<a href="#">Lifetime Commercial Limited</a>



For sample, order BS857 color F4700.





### LVT @ Breakroom | RF-11

<b>Style</b>	BS776
<b>Color</b>	56250
<b>Construction</b>	Multilayer SPC with Acoustic Backing
<b>Wear Layer Thickness</b>	20 mil   0.02 in   0.51 mm
<b>Overall Thickness</b>	0.217 in   5.5 mm
<b>Nominal Dimensions</b>	7 in x 48 in   18 cm x 122 cm
<b>Actual Dimensions</b>	6.92 in x 48.03 in   17.58 cm x 122 cm
<b>Installation</b>	<a href="#">Floating</a>
<b>Approved Install Method</b>	Stagger, Ashlar*
<b>Area Per Box</b>	23.11 sq ft   10 pcs per box
<b>Warranty</b>	<a href="#">15 Year Commercial Limited</a>

\*Shown in Stagger



For sample, order BS776 color 56250.

## Additional Product Options

### Carpet Base @ Guestroom, Corridor, Flex Seating & Optional Meeting Room, BOH & Stairwells | B-02 ALT, B-13 ALT, B-14 ALT, B-15 ALT

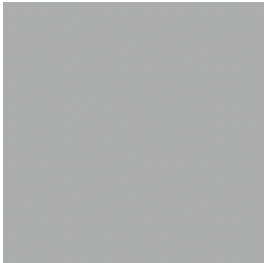
<b>Style</b>	BS827
<b>Color</b>	F1509
<b>Product Type</b>	Carpet Base
<b>Size</b>	4 in
<b>Warranty</b>	1 Year Commercial Limited



For sample, order BS827 color F1509.

### Resilient Base @ Guestroom, Corridor & Employee Breakroom, Flex Seating & Optional Meeting Room, Fitness & Computer/PBX | B-02, B-13, B-14, B-15, B-16

<b>Style</b>	BS824
<b>Color Number</b>	00098
<b>Product Type</b>	Wall Base 4.5" Detail
<b>Construction</b>	Thermoplastic Rubber
<b>Actual Dimensions</b>	96 in length x 4.5 in width
<b>Linear ft per roll   Pieces per roll</b>	48   6
<b>Warranty</b>	5 Year Commercial Limited



For sample, order BS824 color 00098.

### Broadloom Carpet Pad @ Guestroom | CPP-01

<b>Style</b>	132FS
<b>Description</b>	Fiber Select
<b>Weight</b>	32 oz   1,085 g/m²
<b>Thickness</b>	0.312 in   7.92 mm
<b>Density</b>	8.5 lb/ft³   136 kg/m³
<b>Square yards per roll</b>	40

### Broadloom Carpet Pad @ Corridor & Public Area | CPP-10

<b>Style</b>	DW206
<b>Description</b>	DuraWorx™
<b>Weight</b>	47 oz   1593 g/m²
<b>Thickness</b>	0.20 in   5.08 mm
<b>Density</b>	19 lb/ft³   304 kg/m³
<b>Square yards per roll</b>	30



