

FLOORING STANDARDS

Sonesta ES Suites Magpie Scheme

ACCOUNT MANAGER

Karen Perkins

karen.perkins@shawcontract.com
804.683.6455

CUSTOMER SERVICE

Courtni Cartwright

courtni.cartwright@shawinc.com
706.217.3454

VP STRATEGIC ACCOUNTS

Desiree Perkins

desiree.perkins@shawcontract.com
404.452.3055



ShawContract[®]
hospitality



Why Shaw Contract Hospitality?

- By selecting materials that are sustainably sourced, long-lasting and free of harmful chemicals, hotels can assure guests that their values matter. Shaw Contract Hospitality offers a portfolio of products that satisfy the most stringent sustainability certifications.
- An entire team dedicated to customizing your hospitality project, including design services, visualization, estimating, and install seaming diagrams
- Single point of contact for order entry/monitoring, shipment tracking and expediting, technical services, risk mitigation and problem resolution
- Tailored stocking program based on your forecasting to ensure availability of your standard products and rapid service/reduced lead times

Our Sustainability Story

Everyone should have access to sustainable products for the places where we heal, learn, rest and work. Our brand vision, Smarter Impact, is our call to action to share insights and solutions that help you act on your power for positive change, especially when it comes to making sustainable choices.

Our view of sustainability encompasses not only the environmental health of our products and our operations, but also how our products impact human experience. For more than 20 years, Shaw Contract Hospitality has demonstrated our commitment to the Cradle to Cradle® design philosophy and the Cradle to Cradle Certified™ Products Program. More than 90% of the products we manufacture have achieved this prestigious multi-attribute certification, protecting humans and the environment.



Attributes

- Guest comfort and experience
- High-traffic durability
- Housekeeping support and cleanliness
- Improved acoustics
- Reduced renovation downtime
- Welcoming, customized design

Product Breadth

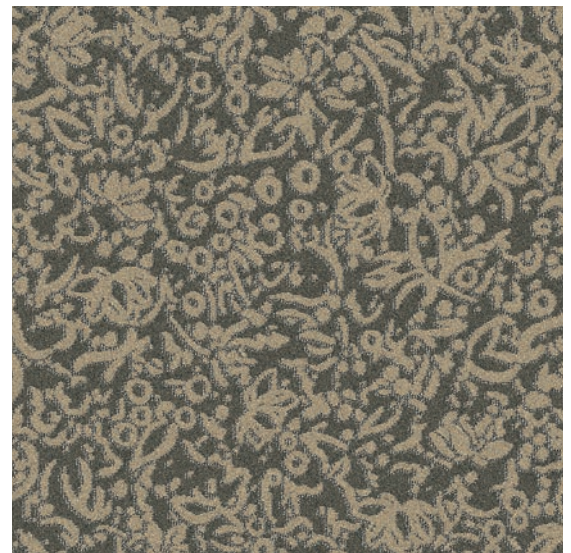
- Area Rugs
- Broadloom
- Carpet Tile
- Hardwood
- LVT
- Sheet
- Bio-based Resilient
- COREtec® Resilient
- Accessories





Carpet @ Guestroom ES-G-CPT-2.1

Style	BS642
Color	C7963
Product Type	Broadloom
Fiber	Eco Solution Q® Nylon
Dye Method	100% Solution Dyed
Construction	Multi-Level Loop Tip Shear
Tufted Weight	32 oz/yd ² 1085.01 g/m ²
Gauge	1/10 in 39.37 per 10 cm
Stitches	12.67 per in 49.88 per 10 cm
Size	12 ft 3.66 m
Pattern Repeat	48 in x 48 in 121.92 cm x 121.92 cm
Backing	Classicbac®
Installation	Stretch-In
Warranty	10 Year Commercial Limited



For sample, order BS642 color C7963.



Carpet Tile @ Guestroom ES-G-CPT-2.1-T-A

Style	BS700
Color	D9028
Product Type	Carpet Tile
Fiber	Eco Solution Q® Nylon
Dye Method	100% Solution Dyed
Construction	Multi-Level Loop Tip Shear
Tufted Weight	30 oz/yd2 1017.2 g/m ²
Gauge	1/10 in 39.37 per 10 cm
Stitches	12.33 per in 48.54 per 10 cm
Size	24 in x 24 in 60.96 cm x 60.96 cm
Backing	Ecologix® Tile
Installation	Direct Glue
Approved Install Method	Ashlar
Warranty	Lifetime Commercial Limited

For sample, order BS700 color D9028.



Guestroom LVT

Style	BS633
Color	63155
Construction	Commercial Luxury Vinyl Tile with Acoustic Backing
Wear Layer Thickness	20 mil 0.02 in 0.51 mm
Overall Thickness	0.197 in 5 mm
Nominal Dimensions	6 in x 48 in 15 cm x 122 cm
Actual Dimensions	6 in x 48 in 15.24 cm x 121.92 cm
Installation	Direct Glue
Approved Install Method	Stagger
Area per box	20 sq ft 10 pcs per box
Warranty	15 Year Commercial Limited



For sample, order BS633 color 63155.



Carpet @ Guest Corridor ES-G-CPT-1.1-B

Style	BS643
Color	C7975
Product Type	Broadloom
Fiber	Eco Solution Q® Nylon
Dye Method	100% Solution Dyed
Construction	Multi-Level Loop Tip Shear
Tufted Weight	36 oz/yd2 1220.64 g/m ²
Gauge	1/10 in 39.37 per 10 cm
Stitches	10 per in 39.37 per 10 cm
Size	12 ft 3.66 m
Pattern Repeat	72 in x 134.4 in 182.88 cm x 341.38 cm
Backing	Ultraloc®
Installation	Direct Glue
Warranty	Lifetime Commercial Limited

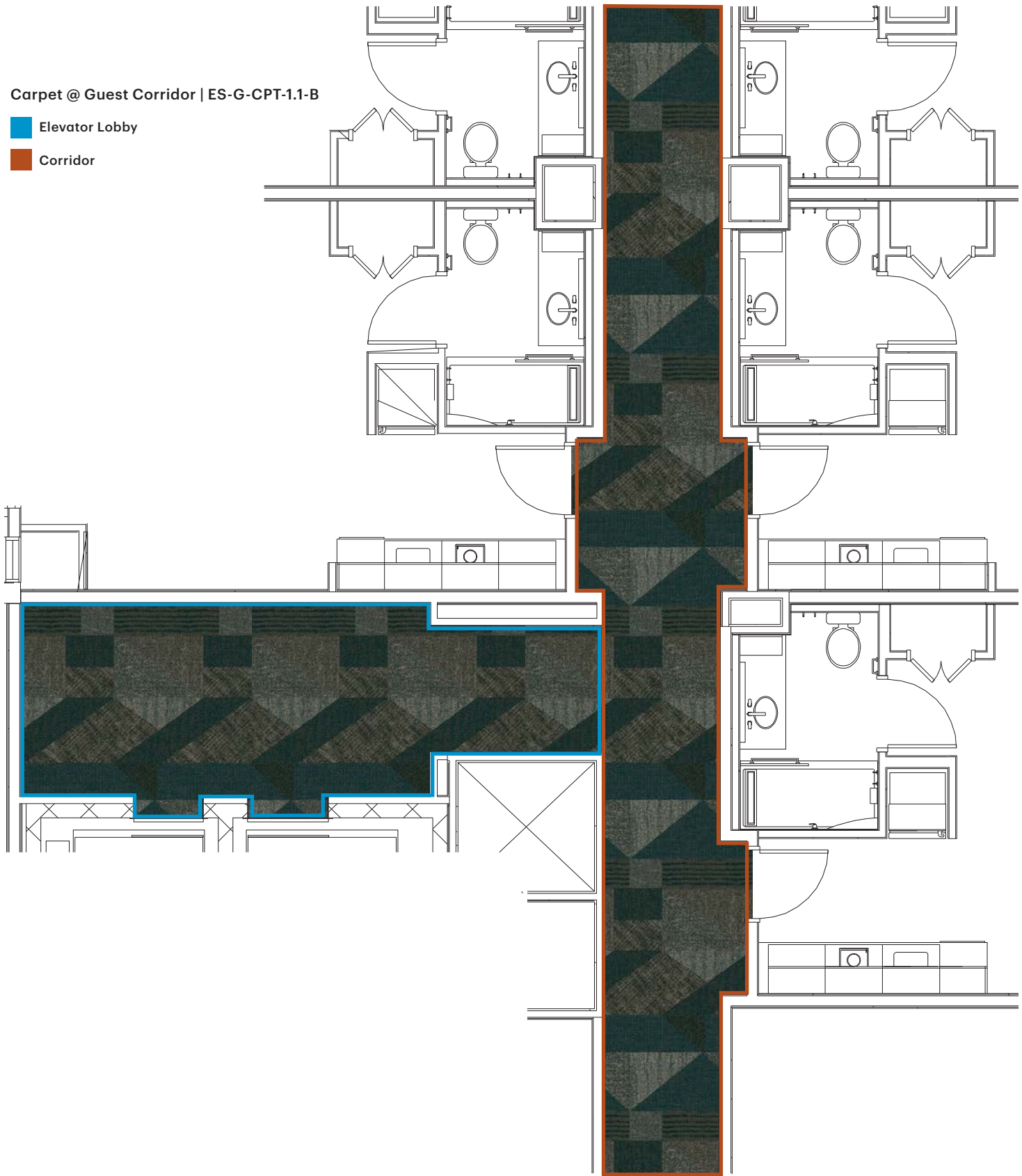


For sample, order BS643 color C7975.

Carpet @ Guest Corridor | ES-G-CPT-1.1-B

 Elevator Lobby

 Corridor





Carpet Tile @ Guest Corridor ES-G-CPT-1.1-T-B

Style	BS644
Color	C7984
Product Type	Carpet Tile
Fiber	Eco Solution Q® Nylon
Dye Method	100% Solution Dyed
Construction	Multi-Level Loop Tip Shear
Tufted Weight	30 oz/yd ² 1017.2 g/m ²
Gauge	1/10 in 39.37 per 10 cm
Stitches	9 per in 35.43 per 10 cm
Size	24 in x 24 in 60.96 cm x 60.96 cm
Backing	Ecologix® Tile
Installation	Direct Glue
Approved Install Method	Ashlar
Warranty	Lifetime Commercial Limited



For sample, order BS644 color C7984.

Carpet Tile @ Guest Corridor | ES-G-CPT-1.1-T-B

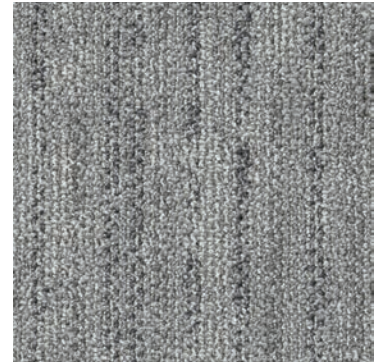
 Elevator Lobby

 Corridor



Public Space Inset Rug Edge | ES-P-CPT-2.1-B

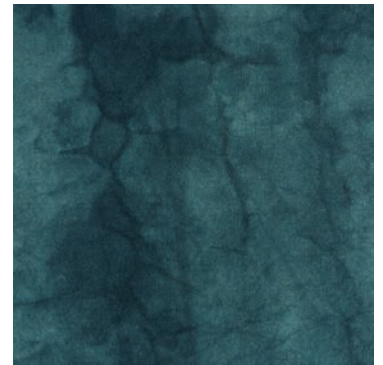
Style	BS625
Color	05105
Product Type	Carpet Tile
Fiber	Eco Solution Q® Nylon
Dye Method	100% Solution Dyed
Construction	Multi-Level Pattern Loop
Tufted Weight	20 oz/yd2 678.1 g/m ²
Gauge	1/10 in 39.4 per 10 cm
Stitches	9 per in 36.5 per 10 cm
Size	9 in x 36 in 23 cm x 91 cm
Backing	Ecoworx® Tile
Installation	Direct Glue
Approved Install Method	Ashlar
Warranty	Lifetime Commercial Limited



For sample, order BS625 color 05105.

Public Space Layered Inset Rug | ES-P-CPT-1.1-B

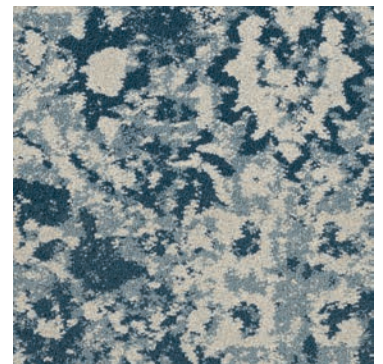
Style	BS626
Color	41497
Product Type	Carpet Tile
Fiber	Eco Solution Q® Nylon
Dye Method	100% Piece Dyed
Construction	Cut Pile
Tufted Weight	36 oz/yd2 1220.6 g/m ²
Gauge	1/10 in 39.4 per 10 cm
Stitches	10.5 per in 42.5 per 10 cm
Size	24 in x 24 in 61 cm x 61 cm
Backing	Ecoworx® Tile
Installation	Direct Glue
Approved Install Method	Ashlar
Warranty	Lifetime Commercial Limited



For sample, order BS626 color 41497.

Public Space Inset Rug | ES-P-CPT-3.1-B

Style	BS627
Color	27490
Product Type	Carpet Tile
Fiber	Eco Solution Q® Nylon
Dye Method	100% Solution Dyed
Construction	Multi-Level Pattern Cut/Loop
Tufted Weight	28 oz/yd2 949.4 g/m ²
Gauge	1/10 in 39.4 per 10 cm
Stitches	9 per in 35 per 10 cm
Size	18 in x 36 in 46 cm x 91 cm
Backing	Ecoworx® Tile
Installation	Direct Glue
Approved Install Method	Ashlar
Warranty	Lifetime Commercial Limited



For sample, order BS627 color 27490.

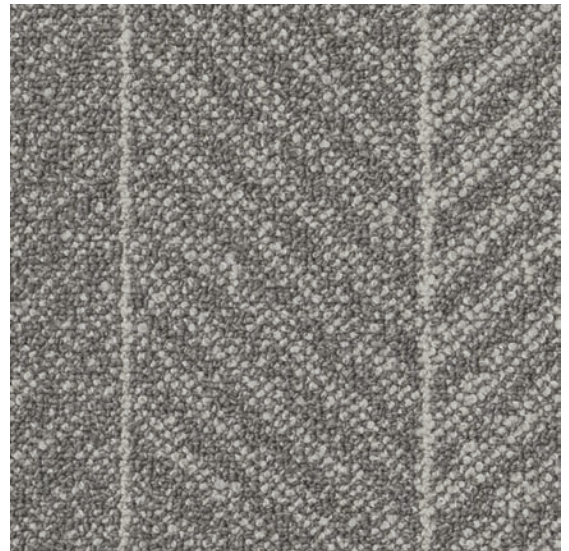
- Public Space Inset Rug Edge
ES-P-CPT-2.1-B
- Public Space Layered Inset Rug
ES-P-CPT-1.1-B
- Public Space Inset Rug
ES-P-CPT-3.1-B



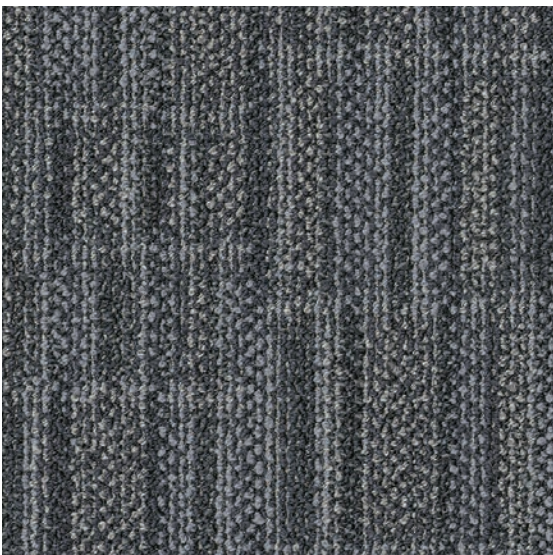


Carpets @ Meeting Room | ES-P-CPT-5

Style	BS628
Color	38518
Product Type	Carpet Tile
Fiber	Eco Solution Q® Nylon
Dye Method	100% Solution Dyed
Construction	Multi-Level Pattern Loop
Tufted Weight	19 oz/yd ² 644.2 g/m ²
Gauge	1/12 in 47.2 per 10 cm
Stitches	8.5 per in 33 per 10 cm
Size	9 in x 36 in 23 cm x 91 cm
Backing	Ecworx® Tile
Installation	Direct Glue
Approved Install Method	Ashlar
Warranty	Lifetime Commercial Limited



For sample, order BS628 color 38518.



Carpet @ BOH & Stairs | ES-P-CPT-8

Style	BS702
Color	90481
Product Type	Broadloom
Fiber	Eco Solution Q® Nylon
Dye Method	100% Solution Dyed
Construction	Multi-Level Pattern Loop
Tufted Weight	22 oz/yd2 745.9 g/m ²
Gauge	1/10 in 39.4 per 10 cm
Stitches	10.5 per in 42.5 per 10 cm
Size	12 ft 3.66 m
Pattern Repeat	12 in x 16 in 30.48 cm x 40.64 cm
Backing	Ultraloc®
Installation	Direct Glue
Warranty	Lifetime Commercial Limited

For sample, order BS702 color 90481.

Additional Products

Cushion @ Guestroom

Style	132FS
Description	Fiber Select
Weight	32 oz 1,085 g/m ²
Thickness	0.312 in 7.92 mm
Density	8.5 lb/ft ³ 136 kg/m ³
Sqaure Yards Per Roll	40

Corridor Cushion

Style	134FS
Description	DoubleStick
Weight	34 oz 1,153 g/m ²
Thickness	0.3125 in 7.94 mm
Density	8.5 lb/ft ³ 136 kg/m ³
Sqaure Yards Per Roll	40

Corridor Cushion

Style	DW204
Description	DuraWorx
Weight	47 oz 1,593 g/m ²
Thickness	0.20 in 5.08 mm
Density	19 lb/ft ³ 304 kg/m ³
Sqaure Yards Per Roll	30

Guestroom Carpet to LVT Transition

Style	146VS
Color	00001
Product Type	Resilient-Carpet Reducer 1/8"
Construction	Thermoplastic Rubber (TPR)
Actual Dimensions	144 in x 1/8 in
Pieces per Carton	3
Warranty	5 Year Commercial Limited

Additional Products

Broadloom Adhesive

Style	H1000
Description	LokWorx+ Broadloom Adhesive 4 gallon
Spread Rate	75-100 sf per gallon

Carpet Tile Adhesive

Style	N5000
Description	LokWorx+ Carpet Tile Adhesive 4 gallon
Spread Rate	250-300 sf per gallon

LVT Adhesive

Style	164CA
Description	LokWorx+ Resilient Adhesive 4 gallon
Spread Rate	175-225 sf per gallon

LVT Adhesive

Style	179CA
Description	LokWorx Resilient Adhesive 4 gallon
Spread Rate	175-225 sf per gallon

Seam Sealer

Style	H4000
Description	Shaw 4000 1 qt
Spread Rate	550-600 sf per qt

