



LOW EMBODIED CARBON | CARBON NEUTRAL | CLOSED LOOP RECYCLING



Rapid Select

ShawContract®

Influential styles and colours with Rapid Select

With Rapid Select, from Shaw Contract, you have a choice of specially edited, influential styles and colours that meet the demand of modern, functional commercial interiors.

Described as a 'go to' flooring choice for quick turnaround projects Rapid Select does not compromise on Quality, Performance or Design.

Made in the UK in a carbon neutral manufacturing facility, all Rapid Select styles are carbon neutral utilising EcoSolution Q100™ yarn and all part of our In Stock programme.

IN 
STOCK



NOOK ● IN COTSWOLD / INSTALLED MONOLITHIC

NOOK ● IN SANDSTONE / INSTALLED MONOLITHIC

COVER: **GRAPH** IN SANDSTONE / INSTALLED MONOLITHIC

ROAM ● IN MOUNTAIN / INSTALLED STAGGER



GRAPH ● IN SHADOW / INSTALLED MONOLITHIC

Colour Palette

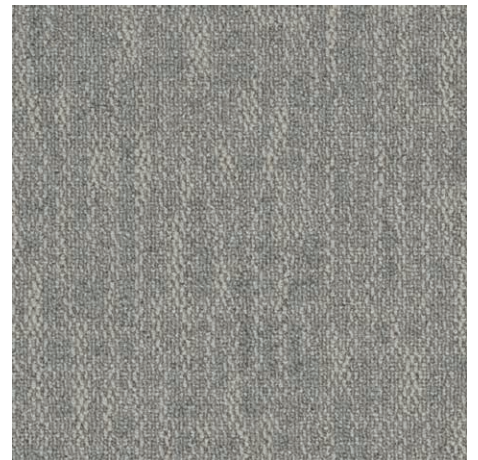
For the first time since the original introduction of the Rapid Select collection in 2018 the colour palette has evolved to include 5 specially selected neutrals.

New additional colour schemes infuse the palette with a variety of earthy neutral tones.

Neutrals



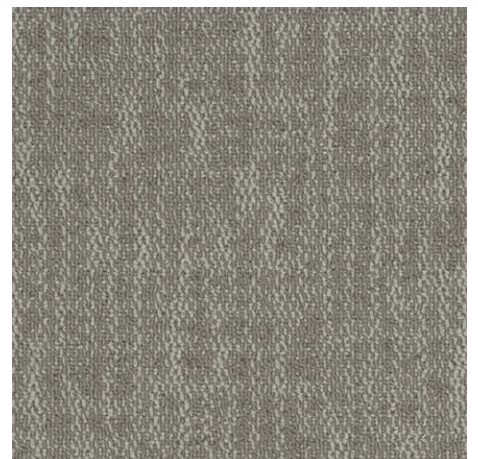
Graph: Cotswold 26100



Gravel 26105



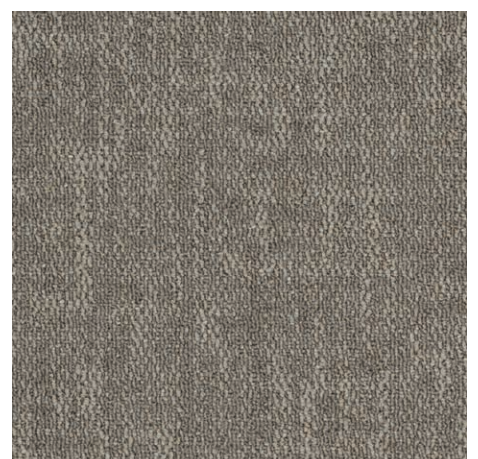
Nook: Cotswold 26100



Sandstone 26155



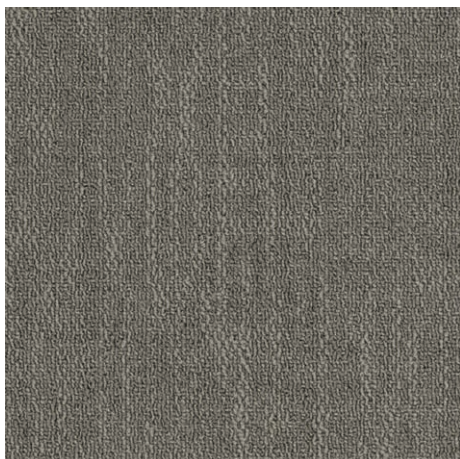
Roam: Cotswold 26100



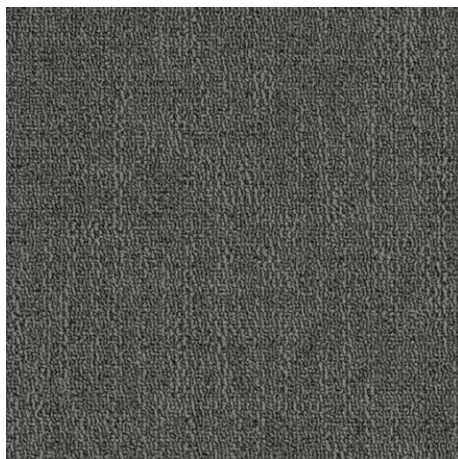
Mountain 26518

Available in three styles and offering 13 neutrals, Rapid Select collection serves as a constant background for changing colour trends.

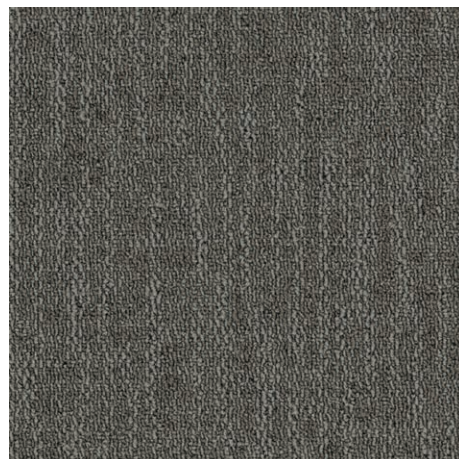
The updated collection now utilises EcoSolution Q100™ yarn and is carbon neutral.



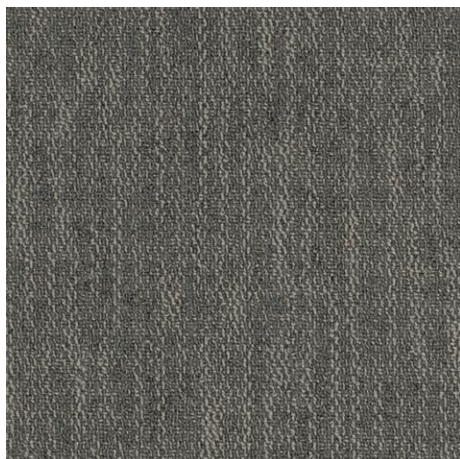
Cobblestone 26515



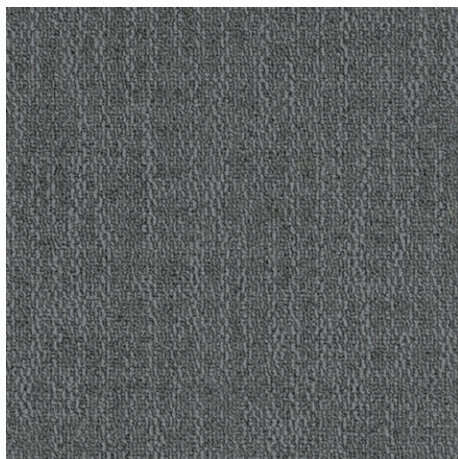
Sussex Grey 26535



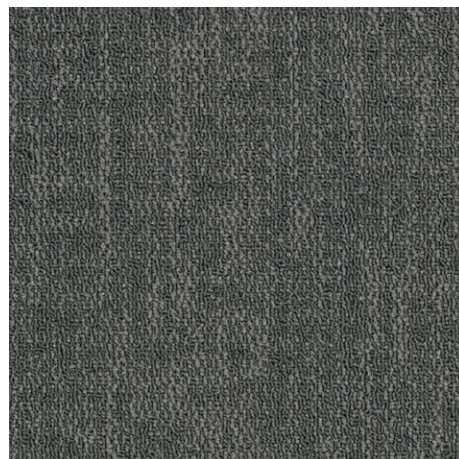
Stonegate 26760



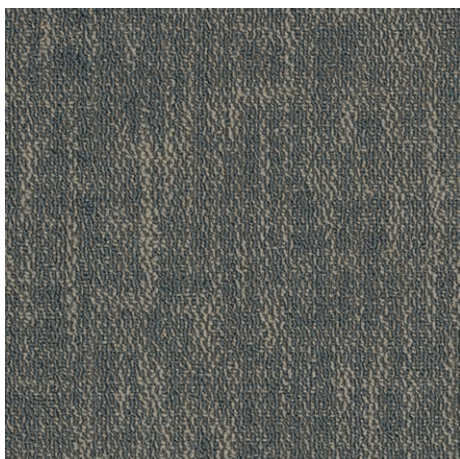
Looking Glass 26530



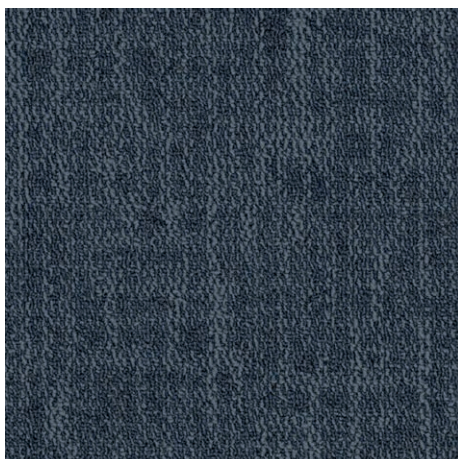
Grey Mist 26481



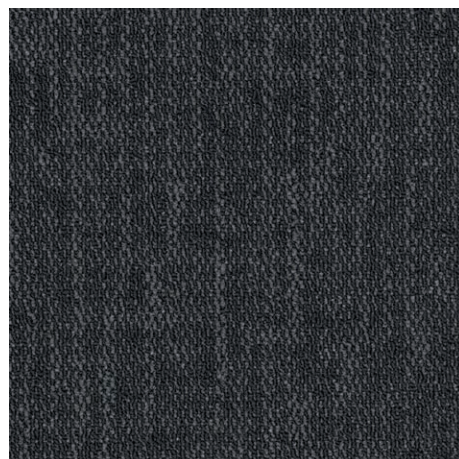
Shadow 26557



Steel 26592



Regent Blue 26485



Flint 26505

In Stock Programme

Rapid Select is made and stocked at our manufacturing plant in Sanquhar, Scotland. Offering available stock for the EMEA region.

IN STOCK 

Choose the look

Create the look you want to achieve with carbon neutral Rapid Select collection.

1

Select your colour

Complement your commercial interior scheme with available In-Stock colours.

2

Quick service option

24 hour dispatch* on receipt of order acknowledgement.

3

*Terms and conditions of 24 hour dispatch

Rapid Select is available to Shaw Contract account holders only, dispatch is subject to stock levels and issue of our full acknowledgment of your order details. The 24 hours does not apply over a weekend or national holiday. Maximum quantities apply.



Made in the UK

Carpet tiles manufactured in the UK using Shaw Contract performance engineered fibre EcoSolution-Q100™ nylon and TaskWorx® or ComfortWorx® backing.



Fit for purpose

Meets the needs of building owners and occupiers for occupant and acoustic comfort.



Added value

Competitively-priced with no compromise on quality – so you can add value for your client.

2

Backing Options

TaskWorx®

- High performance polymer modified bitumen backing

100%

Utilising waste raw material & **100% recycled** content filler

EcoSolution Q100™

100%

recycled content nylon fibre, optimised for low carbon and carbon neutral

Embodied Carbon (EPD Calculation A1-A3)

3.58 kg CO₂ e/m²

TaskWorx® carpet tile is Air Comfort Gold certified for low emitting products

ComfortWorx®

- High performance acoustic and underfoot comfort carpet tile backing

90%

Matrix pad Matrix pad made from 90% recycled PET bottles. 67 bottles are using in every m²

EcoSolution Q100™

100%

recycled content nylon fibre, optimised for low carbon and carbon neutral

Embodied Carbon (EPD Calculation A1-A3)

5.10 kg CO₂ e/m²

ComfortWorx® carpet tile delivers

65%

Improvement in sound absorption performance compared to other hard backed carpet tiles or hard surfaces





NOOK ● IN GRAVEL / INSTALLED MONOLITHIC

ROOM ● IN COBBLESTONE / INSTALLED STAGGER

LRV & L*: Light Reflectance Values

Light Reflectance Values and L*

LRV is a measurement that indicates how much light a surface reflects and how much it absorbs.

Understanding the Light Reflectance Values of surfaces enables interior lighting levels to be optimised and colours to be contrasted.

Designers can use the L* value for determining lighting levels or the LRV (Y) value to compare the carpet tile colours to edgings and other surface finishes.

Other style LRV's can be found on the Shaw Contract website.

	Colour name	Colour number	LRV	L*
Roam Colours available	cotswold	26100	25.9	57.91
	grey mist	26481	11.3	40.07
	flint	26505	2.9	19.82
	cobblestone	26515	15.3	46.06
	mountain	26518	16.4	47.54
	sussex grey	26535	10.1	38.00
	shadow	26557	5.7	28.70
	stonegate	26760	10.1	37.97
Nook Colours available	cotswold	26100	24.6	56.71
	gravel	26105	24.6	56.72
	sandstone	26155	22.8	54.84
	grey mist	26481	11.6	40.58
	regent blue	26485	7.2	32.29
	flint	26505	3.0	20.22
	cobblestone	26515	15.1	45.71
	mountain	26518	15.9	46.85
	looking glass	26530	13.3	43.27
	sussex grey	26535	10.5	38.65
	shadow	26557	6.0	29.35
	steel	26592	13.1	42.97
	stonegate	26760	10.0	37.93
Graph Colours available	cotswold	26100	26.0	58.08
	gravel	26105	26.2	58.27
	sandstone	26155	23.7	58.54
	grey mist	26481	11.0	39.62
	regent blue	26485	7.1	32.00
	flint	26505	2.9	19.65
	cobblestone	26515	15.5	46.31
	mountain	26518	16.7	47.87
	looking glass	26530	13.0	42.69
	sussex grey	26535	11.3	40.02
	shadow	26557	5.5	28.16
	steel	26592	13.9	44.07
	stonegate	26760	10.1	38.09



GRAPH ● IN SANDSTONE / INSTALLED MONOLITHIC

Graph



Cotswold

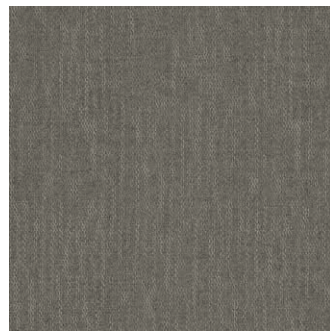
26100

Graph features a network of lines that overall create a small scale pattern and takes its inspiration from the linear patterning of graph paper. Graph style is available in 50 x 50 cm format tiles.



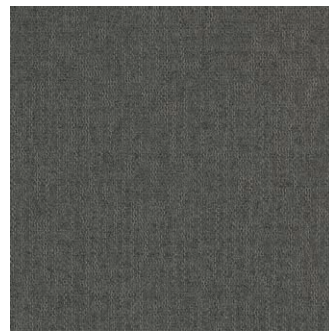
Gravel

26105



Cobblestone

26515



Sussex Grey

26535



Stonegate

26760



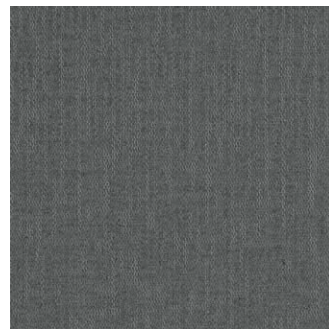
Sandstone

26155



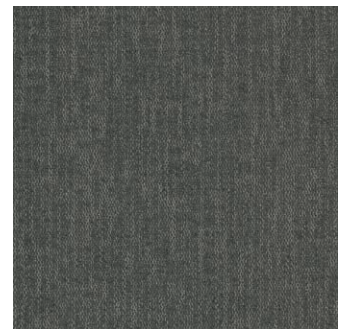
Looking Glass

26530



Grey Mist

26481



Shadow

26557



Mountain

26518



Steel

26592



Regent Blue

26485



Flint

26505



NOOK ● IN STEEL / INSTALLED MONOLITHIC

Nook



Cotswold

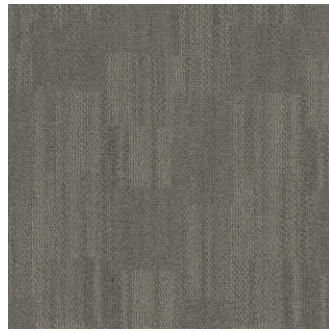
26100

Nook is an eye catching off set square design, with high and low textured pattern effects. Providing designers with an option to create both interest and a flooring feature. Nook style is available in 50 x 50 cm format tiles.



Gravel

26105



Cobblestone

26515



Sussex Grey

26535



Stonegate

26760



Sandstone

26155



Looking Glass

26530



Grey Mist

26481



Shadow

26557



Mountain

26518



Steel

26592



Regent Blue

26485



Flint

26505



ROAM ● IN COTSWOLD / INSTALLED HERRINGBONE

ROAM ● IN MOUNTAIN / INSTALLED HERRINGBONE

Roam

Roam offers soft organic movement that mimics a natural texture often found in nature. The elongated plank tile format allows designers the flexibility to create unique floor layouts. Roam style is available in 25 x 100 cm format plank tiles.



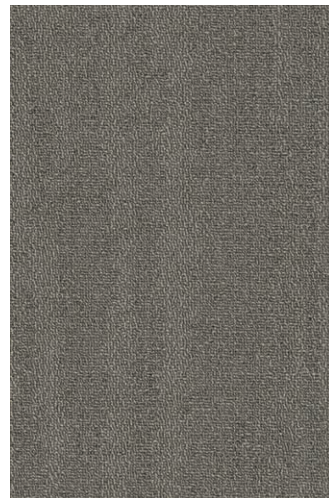
Cotswold

26100



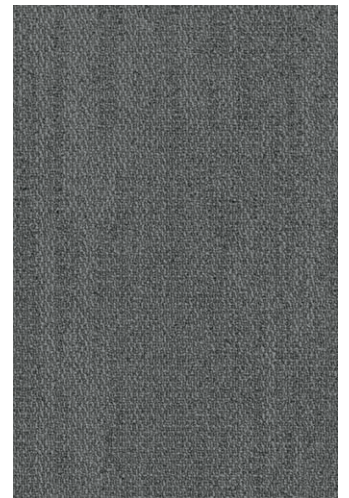
Mountain

26518



Cobblestone

26515



Grey Mist

26481



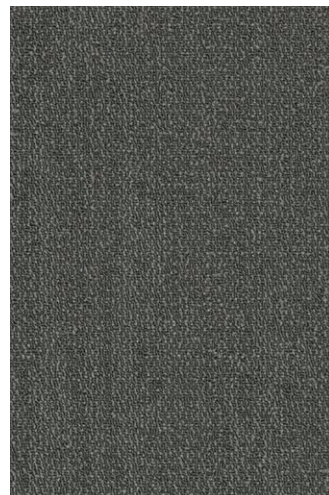
Sussex Grey

26535



Stonegate

26760



Shadow

26557



Flint

26505



GRAPH ● LOOKING GLASS



INSTALLATION AT 3M DUBAI HEADQUARTERS

GRAPH ● GREY MIST



ROOM ● GREY MIST



INSTALLATION AT 3M DUBAI HEADQUARTERS

GRAPH ● SHADOW

GRAPH ● COBBLESTONE

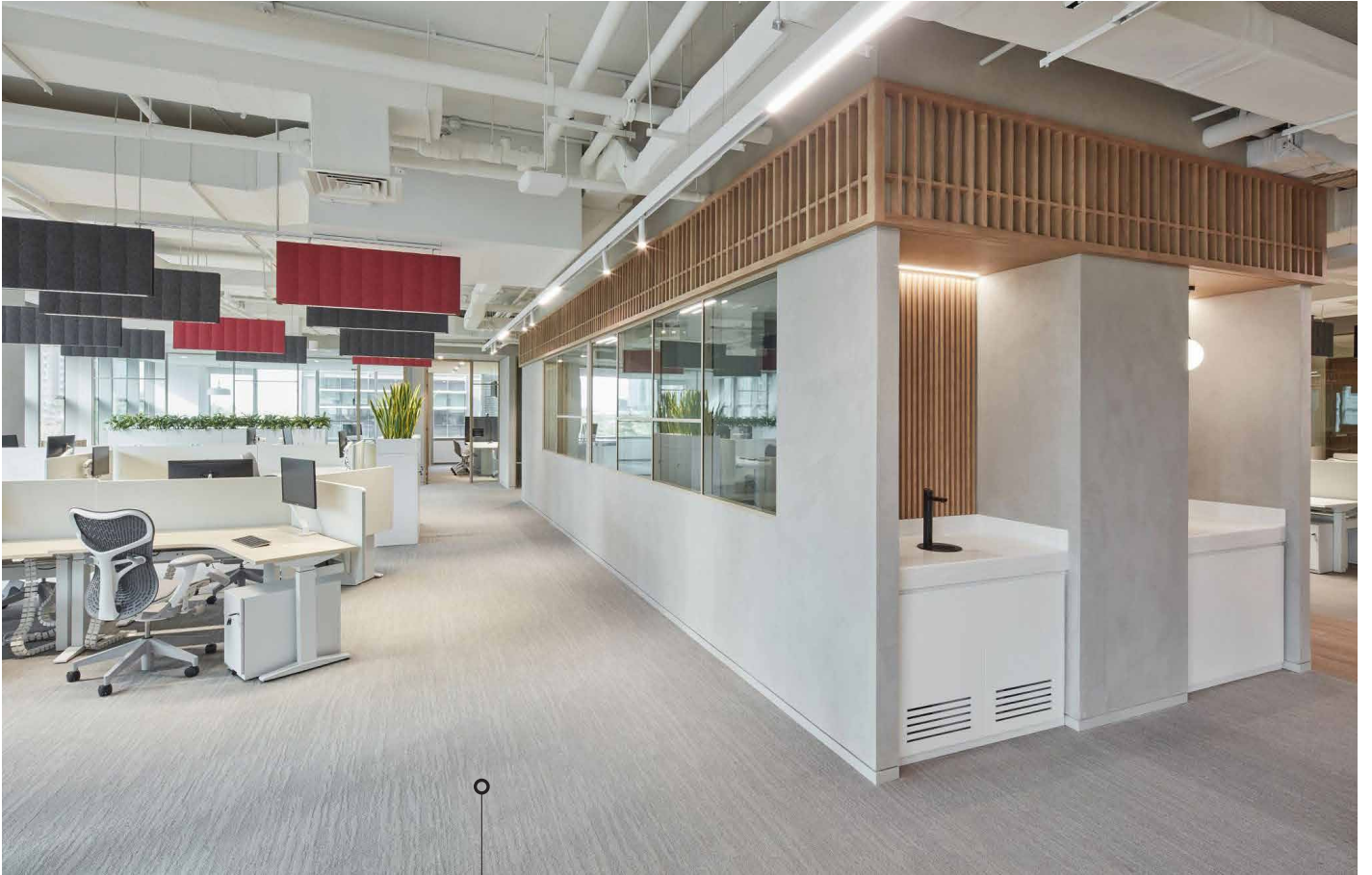


NOOK ● LOOKING GLASS

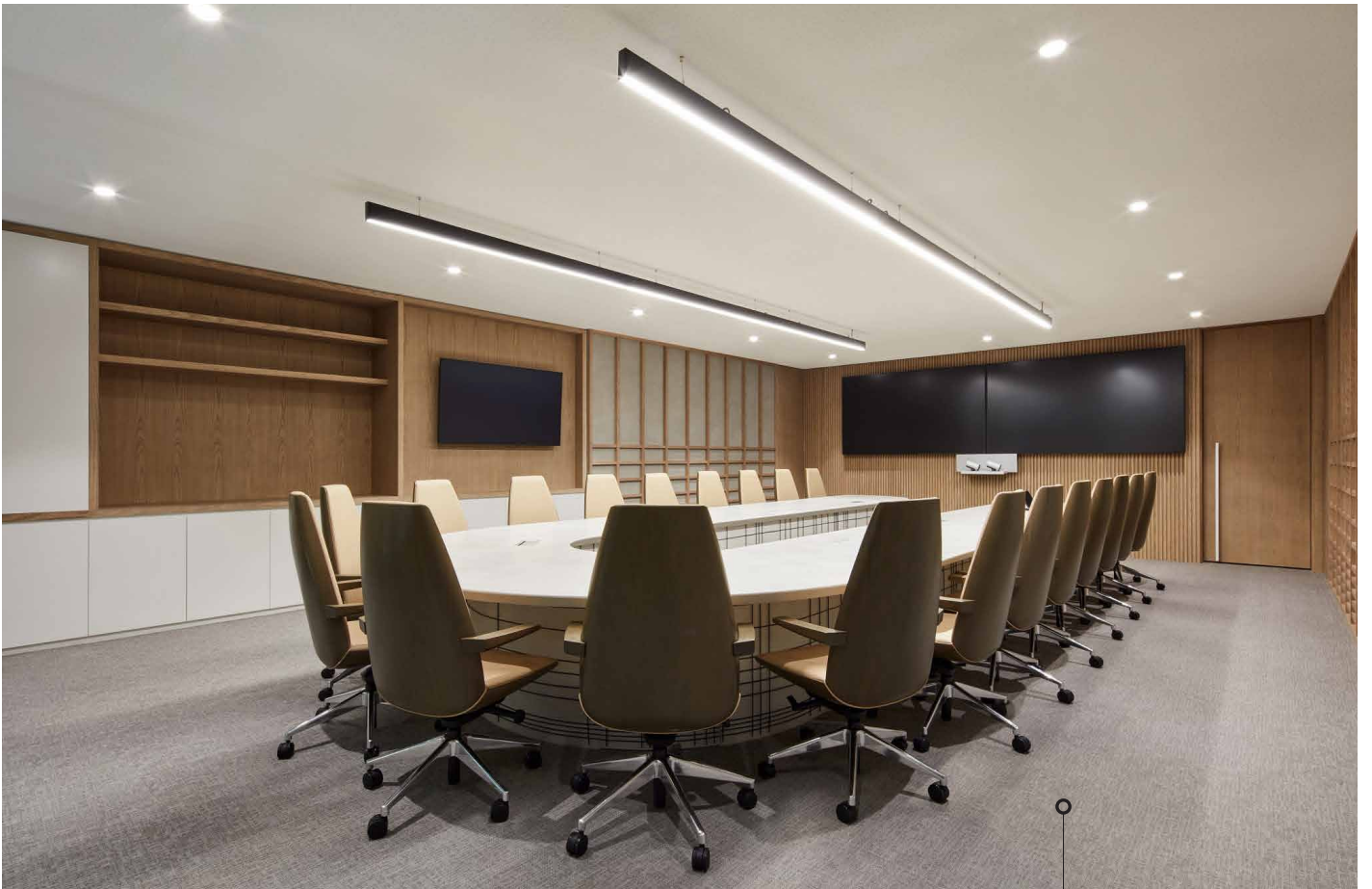


NOOK ● LOOKING GLASS

INSTALLATION AT ARABCLICK

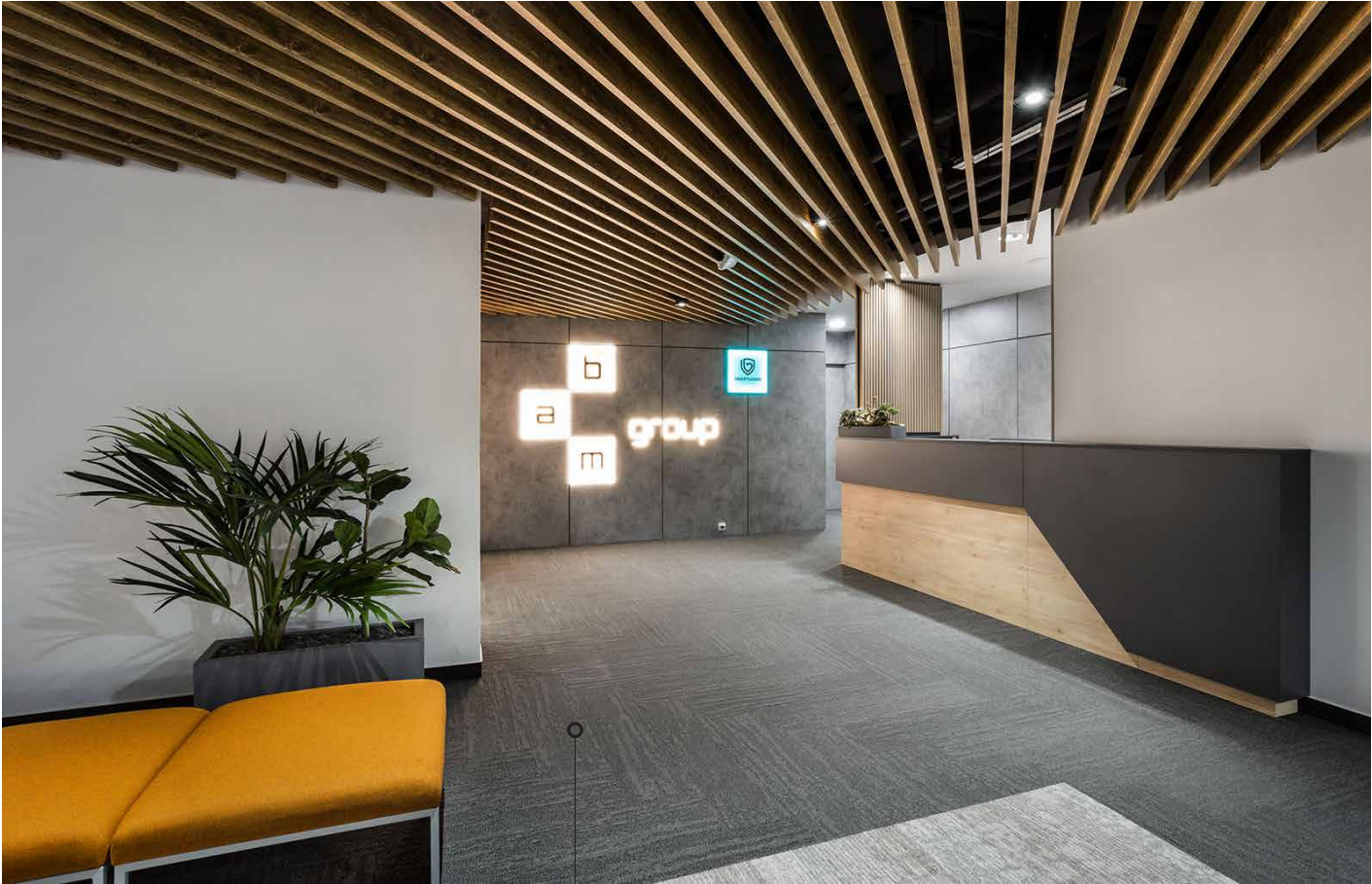


ROAM ● COBBLESTONE



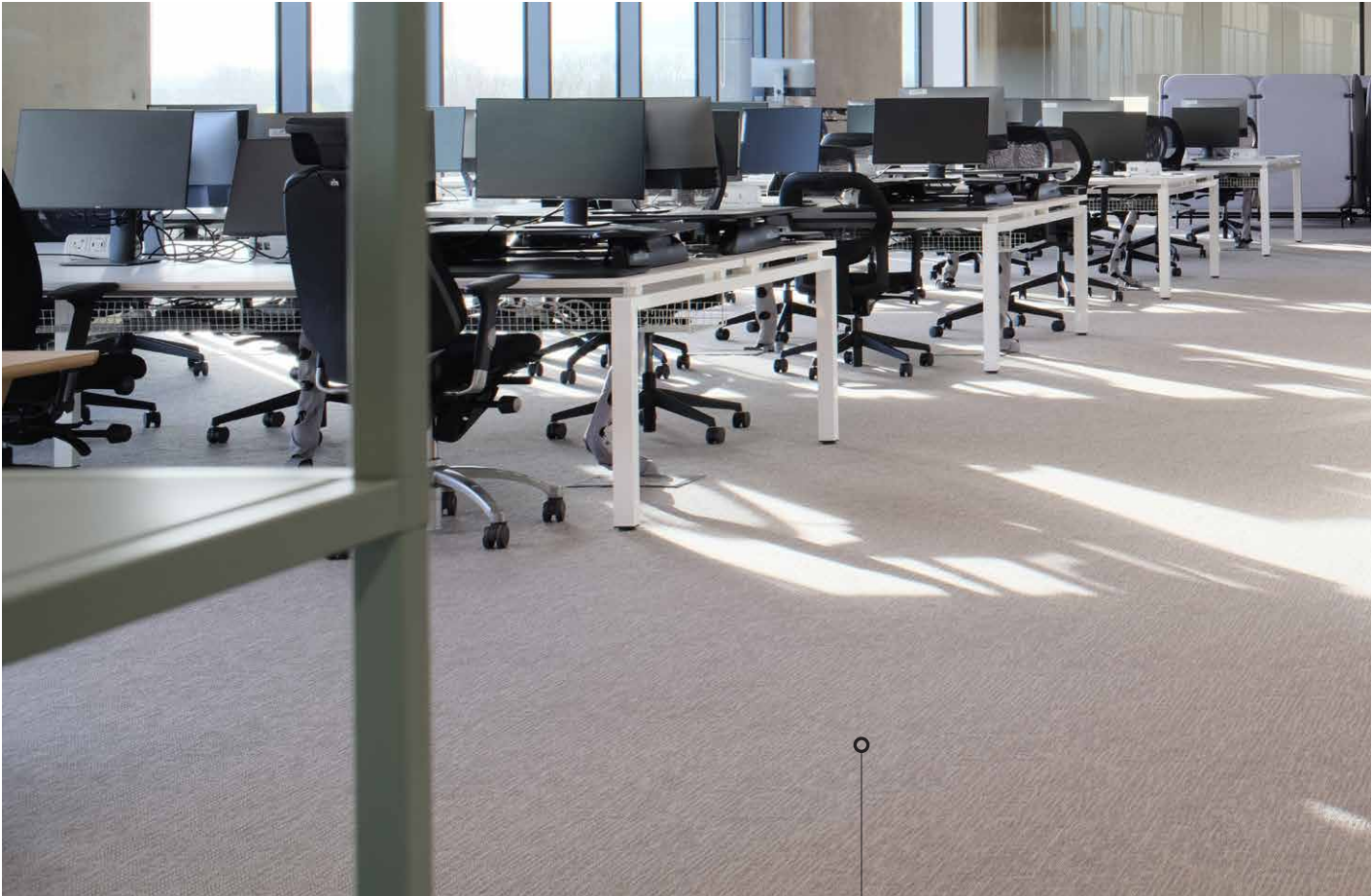
INSTALLATION AT TAKEDA

GRAPH ● COBBLESTONE



INSTALLATION AT BAM GROUP

ROAM ● SHADOW



INSTALLATION AT THREE UK HEADQUARTERS

GRAPH ● COBBLESTONE

Graph

	TaskWorx®	Comfortworx®
Style number:	5T227	C000W
Collection:	Rapid Select	Rapid Select
Product type:	Carpet tile	Carpet tile

Construction

Data + Performance

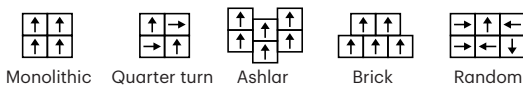
Type of manufacture	Tufted 1/12" 47.2 per 10 cm	Tufted 1/12" 47.2 per 10 cm
Aspect	Multi-level pattern loop	Multi-level pattern loop
Dye method	100% solution dyed	100% solution dyed
Dimensions	50 x 50 cm 20 tiles (5 m²) per box	50 x 50 cm 16 tiles (4 m²) per box
Primary backing	PET non-woven	PET non-woven
Secondary backing	Taskworx® Tile Polymer modified bitumen Contains 100% recycled calcium carbonate filler	Comfortworx® Tile Matrix Pad layer Contains 90% recycled content
Pile fibre composition	Eco Solution Q™ Polyamide 6 Contains 100% recycled content	Eco Solution Q™ Polyamide 6 Contains 100% recycled content
Total thickness	6.0 mm	10.8 mm
Effective pile thickness	2.9 mm	2.7 mm
Total mass	3985 g/m²	4195 g/m²
Nominal total pile mass	616 g/m²	616 g/m²
Effective pile mass	287 g/m²	313 g/m²
Pile density	0.099 g/m³	0.113 g/m³
Embodied Carbon (EPD Calculation A1-A3)	3.85 kg CO ₂ e/m²	4.58 kg CO ₂ e/m²
Recommended installation methods	Monolithic, Quarter turn, Ashlar, Brick, Random	Monolithic, Quarter turn, Ashlar, Brick, Random



For detailed warranty information and the most accurate information on the recycle content please visit shawcontract.com

Recommended installation methods

Méthodes d'installation conseillées | Advies tapijttegels leggen | Empfohlene Installationsmethoden



TaskWorx 25db 0.15 aw
ComfortWorx 37db 0.30 aw

 TaskWorx® 17 EU.DOP/0493/CPR/0621/0422/EST Oosterhout Showroom Vaartweg 10, 4905 BL Netherlands (NLD) Notified Body 2895	 TaskWorx® 22 UK.DOP/0338/CPR/1220/0422/BT Blackaddie Road Industrial Estate, Sanquhar, DG4 6DB, UK Approved Body 0338
 EN 14041:2004/AC 2006 For use as an indoor floor covering as specified by the manufacturer	

 ComfortWorx® 20 EU.DOP/2895/CPR/0820/1020/EST Oosterhout Showroom Vaartweg 10, 4905 BL Netherlands (NLD) Notified Body 2895	 ComfortWorx® 22 UK.DOP/0338/CPR/0820/1020/BT Blackaddie Road Industrial Estate, Sanquhar, DG4 6DB, UK Approved Body 0338
 EN 14041:2004/AC 2006 For use as an indoor floor covering as specified by the manufacturer	

London +44 (0) 20 7961 4120 | Dubai +971 4 584 6956 | Oosterhout +31 20 2620955

Specifications are subject to nominal manufacturing variances. Material supply and/or manufacturing processes may necessitate specification changes without notice. Visit shawcontract.com for more information.
 L'approvisionnement des matériaux et/ou les procédés de fabrication peuvent nécessiter des modifications de caractéristiques sans avertissement. Pour plus d'informations, veuillez vous rendre sur shawcontract.com.
 Specificaties voor de levering van materialen en/of productieprocessen kunnen indien nodig zonder voorafgaande kennisgeving worden gewijzigd. Ga naar shawcontract.com voor meer informatie.
 Die Spezifikationen unterliegen den nominalen Fertigungsschwankungen. Materialversorgungs- und/oder Fertigungsprozesse können ohne Vorankündigung zu Spezifikationsänderungen führen. Weitere Informationen finden Sie unter shawcontract.com

Nook

	TaskWorx®	Comfortworx®
Style number:	5T229	C002W
Collection:	Rapid Select	Rapid Select
Product type:	Carpet tile	Carpet tile

Construction

Data + Performance

Type of manufacture	Tufted 1/12" 47.2 per 10 cm	Tufted 1/12" 47.2 per 10 cm
Aspect	Multi-level pattern loop	Multi-level pattern loop
Dye method	100% solution dyed	100% solution dyed
Dimensions	50 x 50 cm 20 tiles (5 m ²) per box	50 x 50 cm 16 tiles (4 m ²) per box
Primary backing	PET non-woven	PET non-woven
Secondary backing	Taskworx® Tile Polymer modified bitumen Contains 100% recycled calcium carbonate filler	Comfortworx® Tile Matrix Pad layer Contains 90% recycled content
Pile fibre composition	Eco Solution Q™ Polyamide 6 Contains 100% recycled content	Eco Solution Q™ Polyamide 6 Contains 100% recycled content
Total thickness	6.3 mm	10.8 mm
Effective pile thickness	3.1 mm	2.7 mm
Total mass	4156 g/m ²	4195 g/m ²
Nominal total pile mass	616 g/m ²	616 g/m ²
Effective pile mass	263 g/m ²	313 g/m ²
Pile density	0.085 g/m ²	0.113 g/m ²
Embodied Carbon (EPD Calculation A1-A3)	3.85 kg CO ₂ e/m ²	4.58 kg CO ₂ e/m ²
Recommended installation methods	Monolithic, Quarter turn, Ashlar, Brick, Random	Monolithic, Quarter turn, Ashlar, Brick, Random



Carbon Neutral
Low Embodied Carbon



For detailed warranty information and the most accurate information on the recycle content please visit shawcontract.com

Recommended installation methods

Méthodes d'installation conseillées | Advies tapijttegels leggen | Empfohlene Installationsmethoden



Monolithic



Quarter turn



Ashlar



Brick



Random



TaskWorx 25db 0.15 aw
ComfortWorx 37db 0.30 aw

<p>TaskWorx® 17 EU.DOP/0493/CPR/0621/0422/EST</p> <p>Oosterhout Showroom Vaartweg 10, 4905 BL Netherlands (NLD) Notified Body 2895</p>	<p>TaskWorx® 22 UK.DOP/0338/CPR/1220/0422/BT</p> <p>Blackaddie Road Industrial Estate, Sanquhar, DG4 6DB, UK Approved Body 0338</p>
<p>EN 14041:2004/AC 2006 For use as an indoor floor covering as specified by the manufacturer</p>	

<p>ComfortWorx® 20 EU.DOP/2895/CPR/0820/1020/EST</p> <p>Oosterhout Showroom Vaartweg 10, 4905 BL Netherlands (NLD) Notified Body 2895</p>	<p>ComfortWorx® 22 UK.DOP/0338/CPR/0820/1020/BT</p> <p>Blackaddie Road Industrial Estate, Sanquhar, DG4 6DB, UK Approved Body 0338</p>
<p>EN 14041:2004/AC 2006 For use as an indoor floor covering as specified by the manufacturer</p>	

London +44 (0) 20 7961 4120 | Dubai +971 4 584 6956 | Oosterhout +31 20 2620955

Specifications are subject to nominal manufacturing variances. Material supply and/or manufacturing processes may necessitate specification changes without notice. Visit shawcontract.com for more information.

L'approvisionnement des matériaux et/ou les procédés de fabrication peuvent nécessiter des modifications de caractéristiques sans avertissement. Pour plus d'informations, veuillez vous rendre sur shawcontract.com

Specificaties voor de levering van materialen en/of productieprocessen kunnen indien nodig zonder voorafgaande kennisgeving worden gewijzigd. Ga naar shawcontract.com voor meer informatie.

Die Spezifikationen unterliegen den nominalen Fertigungsschwankungen. Materialversorgungs- und/oder Fertigungsprozesse können ohne Vorankündigung zu Spezifikationsänderungen führen. Weitere Informationen finden Sie unter shawcontract.com

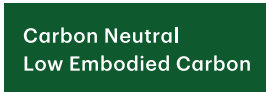
Roam

	TaskWorx®	Comfortworx®
Style number:	5T228	C001W
Collection:	Rapid Select	Rapid Select
Product type:	Carpet tile	Carpet tile

Construction

Data + Performance

Type of manufacture	Tufted 1/12" 47.2 per 10 cm	Tufted 1/12" 47.2 per 10 cm
Aspect	Multi-level pattern loop	Multi-level pattern loop
Dye method	100% solution dyed	100% solution dyed
Dimensions	25 x 100 cm 20 tiles (5 m²) per box	25 x 100 cm 16 tiles (4 m²) per box
Primary backing	PET non-woven	PET non-woven
Secondary backing	Taskworx® Tile Polymer modified bitumen Contains 100% recycled calcium carbonate filler	Comfortworx® Tile Matrix Pad layer Contains 90% recycled content
Pile fibre composition	Eco Solution Q™ Polyamide 6 Contains 100% recycled content	Eco Solution Q™ Polyamide 6 Contains 100% recycled content
Total thickness	5.8 mm	10.8 mm
Effective pile thickness	2.7 mm	2.7 mm
Total mass	3917 g/m²	4195 g/m²
Nominal total pile mass	616 g/m²	616 g/m²
Effective pile mass	292 g/m²	313 g/m²
Pile density	0.108 g/m³	0.113 g/m³
Embodied Carbon (EPD Calculation A1-A3)	3.85 kg CO ₂ e/m²	4.58 kg CO ₂ e/m²
Recommended installation methods	Monolithic, Ashlar, Brick, Herringbone, Stagger	Monolithic, Ashlar, Brick, Herringbone, Stagger



For detailed warranty information and the most accurate information on the recycle content please visit shawcontract.com

Recommended installation methods

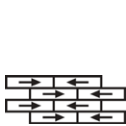
Méthodes d'installation conseillées | Advies tapijttegels leggen | Empfohlene Installationsmethoden



Monolithic



Ashlar



Brick



Stagger



Herringbone



TaskWorx 25db 0.15 aw
ComfortWorx 37db 0.30 aw

 TaskWorx® 17 EU.DOP/0493/CPR/0621/0422/EST Oosterhout Showroom Vaartweg 10, 4905 BL Netherlands (NLD) Notified Body 2895	 TaskWorx® 22 UK.DOP/0338/CPR/1220/0422/BT Blackaddie Road Industrial Estate, Sanquhar, DG4 6DB, UK Approved Body 0338
 EN 14041:2004/AC 2006 For use as an indoor floor covering as specified by the manufacturer	

 ComfortWorx® 20 EU.DOP/2895/CPR/0820/1020/EST Oosterhout Showroom Vaartweg 10, 4905 BL Netherlands (NLD) Notified Body 2895	 ComfortWorx® 22 UK.DOP/0338/CPR/0820/1020/BT Blackaddie Road Industrial Estate, Sanquhar, DG4 6DB, UK Approved Body 0338
 EN 14041:2004/AC 2006 For use as an indoor floor covering as specified by the manufacturer	

London +44 (0) 20 7961 4120 | Dubai +971 4 584 6956 | Oosterhout +31 20 2620955

Specifications are subject to nominal manufacturing variances. Material supply and/or manufacturing processes may necessitate specification changes without notice. Visit shawcontract.com for more information.

L'approvisionnement des matériaux et/ou les procédés de fabrication peuvent nécessiter des modifications de caractéristiques sans avertissement. Pour plus d'informations, veuillez vous rendre sur shawcontract.com

Specificaties voor de levering van materialen en/of productieprocessen kunnen indien nodig zonder voorafgaande kennisgeving worden gewijzigd. Ga naar shawcontract.com voor meer informatie.

Die Spezifikationen unterliegen den nominalen Fertigungsschwankungen. Materialversorgungs- und/oder Fertigungsprozesse können ohne Vorankündigung zu Spezifikationsänderungen führen. Weitere Informationen finden Sie unter shawcontract.com



ShawContract®

London +44 (0) 20 7961 4120 | Dubai +971 4 584 6956 | Oosterhout +31 20 2620955

UK: infouk@shawcontract.com | Middle East/Africa: infoMEA@shawcontract.com | Netherlands: infoNL@shawcontract.com

Corporate Headquarters +1 800 257 7429 | +1 706 532 7984 | Atlanta +1 404 853 7429 | Bangalore +080 6773 0202 | Beijing +86 10 6568 5881
Chicago +1 312 467 1331 | Hong Kong +852 2623 0371 | Latin America (Miami) +1 305 827 5912 | Los Angeles +1 800 233 1614 | Melbourne +61 3 9939 8543
Mexico City +55 5010 7600 | Nantong +86 400 800 7429 | New York +1 212 953 7429 | San Francisco +1 415 955 1920 | Santiago +562 2431 5000 x 550
São Paulo +55 11 3071 1702 | Shanghai +86 21 3338 4000 | Singapore +65 6733 1811 | Sydney +61 2 8065 1901

shawcontract.com

COVER: NOOK IN FLINT • COBBLESTONE / INSTALLED MONOLITHIC