

FLOORING STANDARDS

Hampton Inn Scenic Scheme

ACCOUNT MANAGER

David Burn

dburn1@mac.com

301.520.9360

CUSTOMER SERVICE

Natashia Kernea

natashia.kernea@shawinc.com

706.217.3440

VP STRATEGIC ACCOUNTS

Desiree Perkins

desiree.perkins@shawcontract.com

404.452.3055



ShawContract[®]
hospitality



Our Sustainability Story

Everyone should have access to sustainable products for the places where we heal, learn, rest and work. Our brand vision, Smarter Impact, is our call to action to share insights and solutions that help you act on your power for positive change, especially when it comes to making sustainable choices.

Our view of sustainability encompasses not only the environmental health of our products and our operations, but also how our products impact human experience. For more than 20 years, Shaw Contract Hospitality has demonstrated our commitment to the Cradle to Cradle® design philosophy and the Cradle to Cradle Certified™ Products Program. More than 90% of the products we manufacture have achieved this prestigious multi-attribute certification, protecting humans and the environment.



Declare.

EPD®



Attributes

- Guest comfort and experience
- High-traffic durability
- Housekeeping support and cleanliness
- Improved acoustics
- Reduced renovation downtime
- Welcoming, customized design

Why Shaw Contract Hospitality?

- By selecting materials that are sustainably sourced, long-lasting and free of harmful chemicals, hotels can assure guests that their values matter. Shaw Contract Hospitality offers a portfolio of products that satisfy the most stringent sustainability certifications.
- An entire team dedicated to customizing your hospitality project, including design services, visualization, estimating, and install seaming diagrams
- Single point of contact for order entry/monitoring, shipment tracking and expediting, technical services, risk mitigation and problem resolution
- Tailored stocking program based on your forecasting to ensure availability of your standard products and rapid service/reduced lead times

Product Breadth

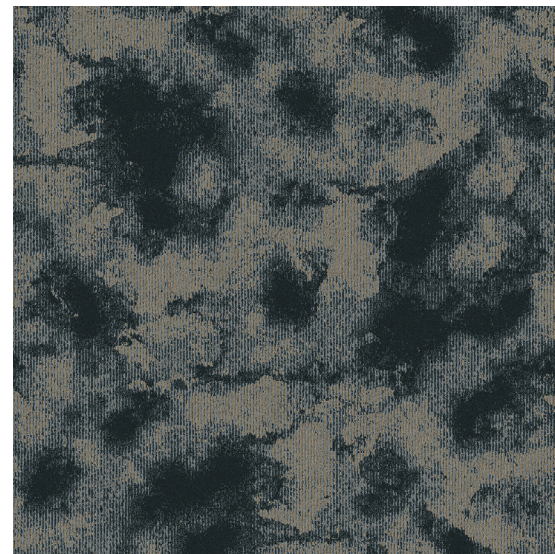
- Area Rugs
- Broadloom
- Carpet Tile
- Hardwood
- LVT
- Sheet
- Bio-based Resilient
- COREtec® Resilient
- Accessories





Broadloom Carpet @ Guestroom | CP-01

| | |
|----------------|--|
| Style | BS858 |
| Color | F4666 |
| Product Type | Broadloom |
| Fiber | Eco Solution Q® Nylon |
| Dye Method | 100% Solution Dyed |
| Construction | Multi-Tuft Full Repeat Tip Shear |
| Tufted Weight | 32 oz/yd ² 1085.01 g/m ² |
| Gauge | 1/10 in 39.37 per 10 cm |
| Stitches | 13.67 per in 53.82 per 10 cm |
| Size | 15 ft 4.57 m |
| Pattern Repeat | 90 in x 98.4 in 228.6 cm x 249.94 cm |
| Backing | ClassicBac® |
| Installation | <u>Stretch-In</u> |
| Warranty | <u>10 Year Commercial Limited</u> |

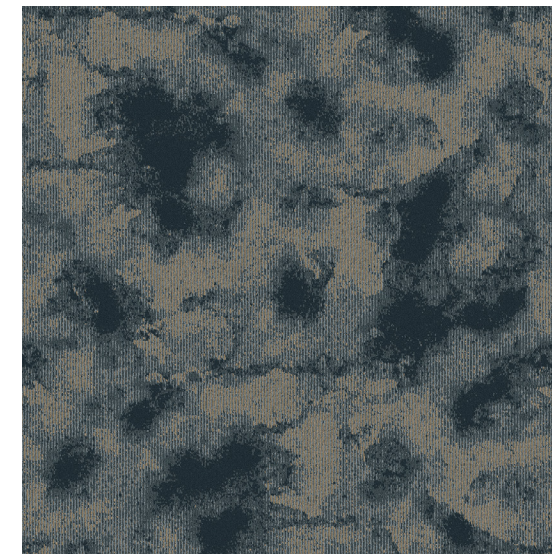


For sample, order BS858 color F4666.



Carpet Tile @ Guestroom | CP-01 ALT

| | |
|------------------------------|---|
| Style | BS781 |
| Color | F1230 |
| Product Type | Carpet Tile |
| Fiber | Eco Solution Q® Nylon |
| Dye Method | 100% Solution Dyed |
| Construction | Multi-Tuft Full Repeat Tip Shear |
| Tufted Weight | 24 oz/yd ² 813.76 g/m ² |
| Gauge | 1/10 in 39.37 per 10 cm |
| Stitches | 12 per in 47.24 per 10 cm |
| Size | 24 in x 24 in 60.96 cm x 60.96 cm |
| Backing | Ecologix® Tile |
| Installation | <u>Direct Glue</u> |
| Approved Installation Method | Brick, Ashlar, or Quarter Turn* |
| Warranty | <u>Lifetime Commercial Limited</u> |



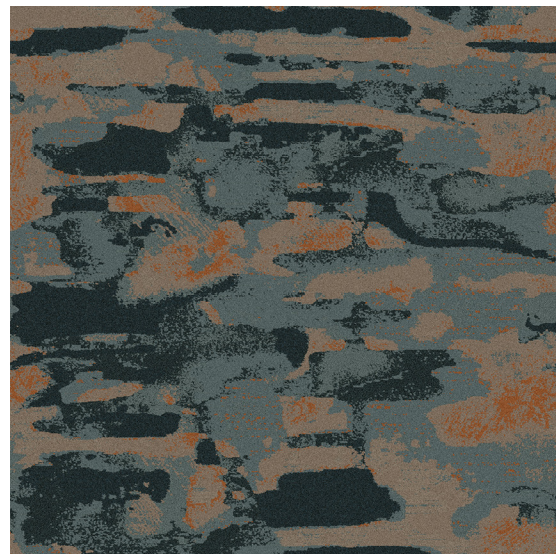
For sample, order BS781 color F1230.

*Shown in Brick



Broadloom Carpet @ Corridor | CP-10

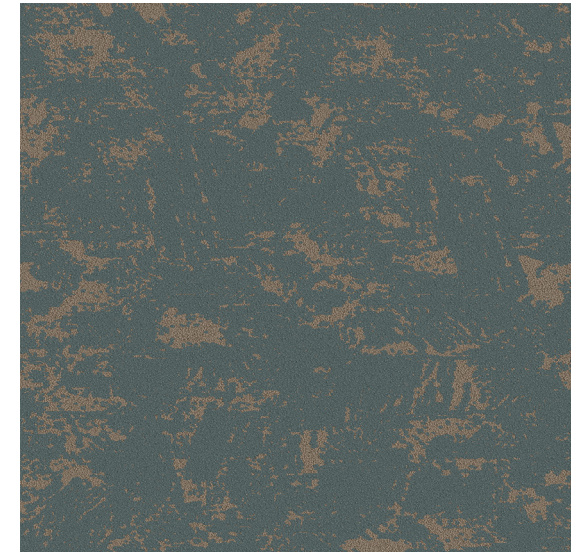
| | |
|----------------|---|
| Style | BS770 |
| Color | F0604 |
| Product Type | Broadloom |
| Fiber | Eco Solution Q® Nylon |
| Dye Method | 100% Solution Dyed |
| Construction | Multi-Level Loop Tip Shear |
| Tufted Weight | 36 oz/yd² 1220.64 g/m² |
| Gauge | 1/10 in 39.37 per 10 cm |
| Stitches | 10 per in 39.37 per 10 cm |
| Size | 12 ft 3.66 m |
| Pattern Repeat | 72 in x 284.8 in 182.88 cm x 723.39 cm |
| Backing | Ultraloc® |
| Installation | Direct Glue |
| Warranty | Lifetime Commercial Limited |



For sample, order BS770 color F0604.

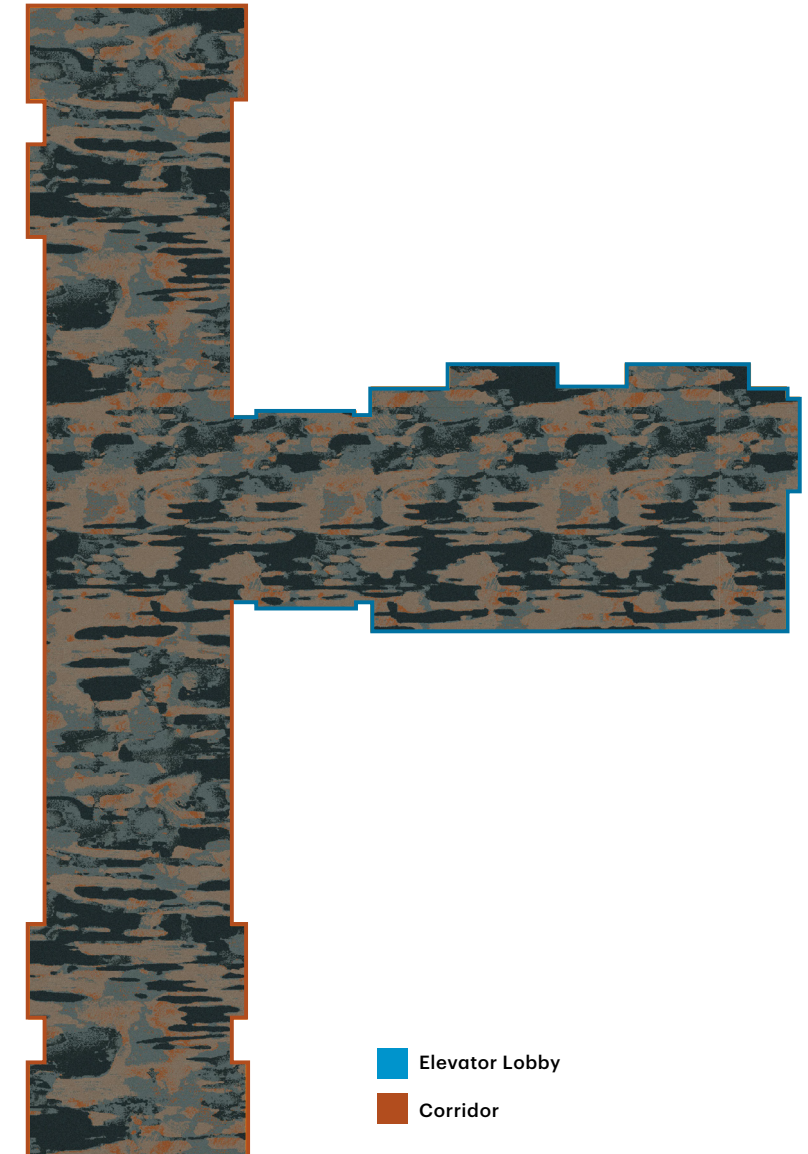
Broadloom Carpet @ Door Fill | CP-10.1

| | |
|----------------|---|
| Style | BS994 |
| Color | G1494 |
| Product Type | Broadloom |
| Fiber | Eco Solution Q® Nylon |
| Dye Method | 100% Solution Dyed |
| Construction | Multi-Level Loop Tip Shear |
| Tufted Weight | 36 oz/yd² 1220.64 g/m² |
| Gauge | 1/10 in 39.37 per 10 cm |
| Stitches | 10 per in 39.37 per 10 cm |
| Size | 12 ft 3.66 m |
| Pattern Repeat | 48 in x 64 in 121.92 cm x 162.56 cm |
| Backing | Ultraloc® |
| Installation | Direct Glue |
| Warranty | Lifetime Commercial Limited |



For sample, order BS994 color G1494.

Broadloom Carpet @ Corridor | CP-10



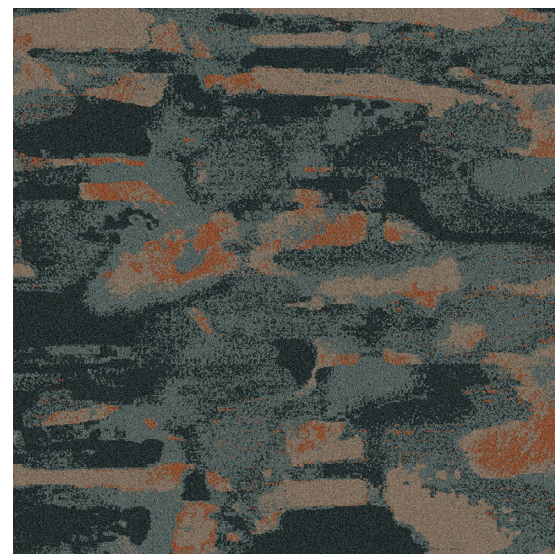
■ Elevator Lobby
■ Corridor



Carpet Tile @ Corridor | CP-10 ALT

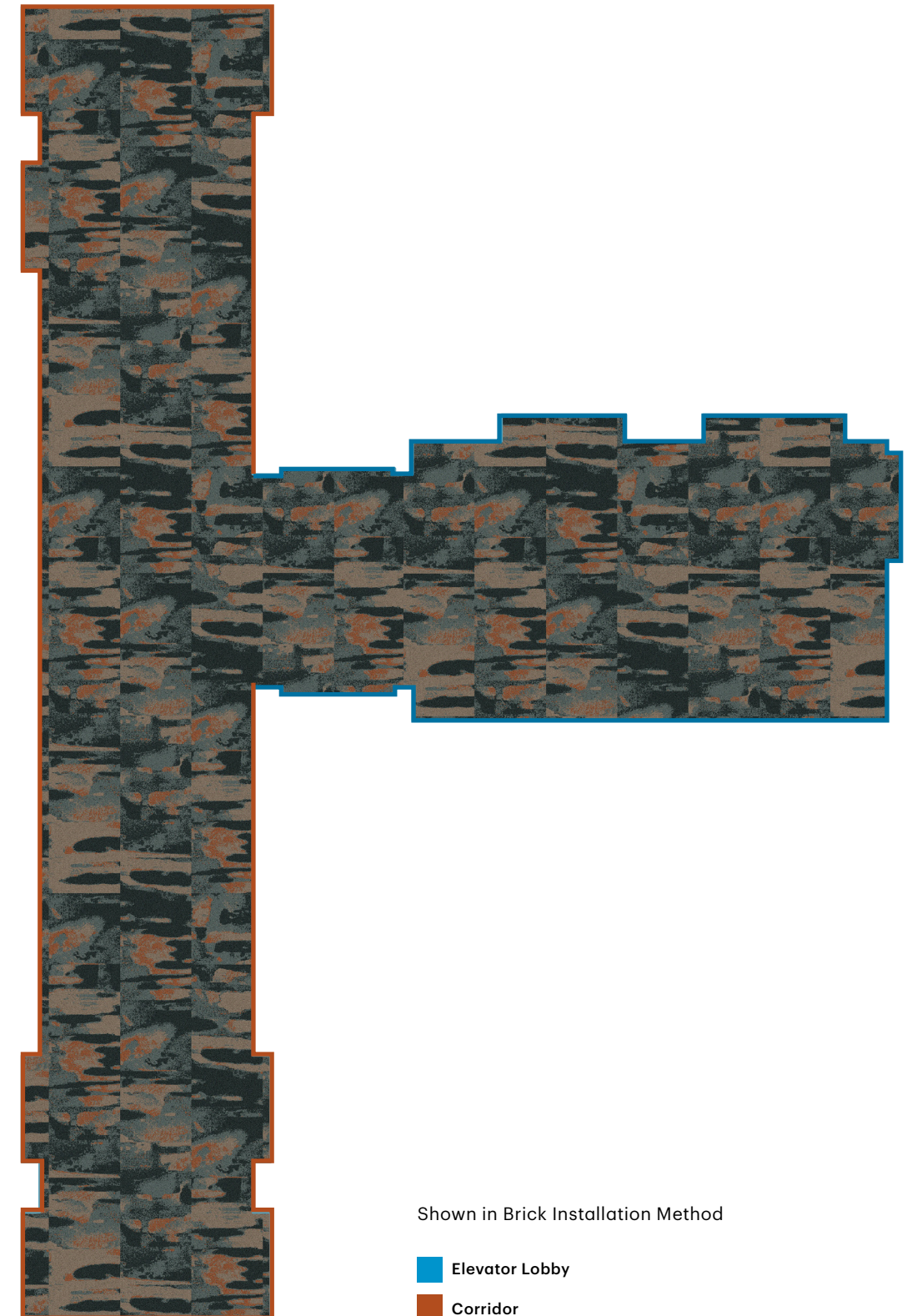
| | |
|------------------------------|-------------------------------------|
| Style | BS773 |
| Color | F0957 |
| Product Type | Carpet Tile |
| Fiber | Eco Solution Q® Nylon |
| Dye Method | 100% Solution Dyed |
| Construction | Multi-Level Loop Tip Shear |
| Tufted Weight | 30 oz/yd² 1017.2 g/m² |
| Gauge | 1/10 in 39.37 per 10 cm |
| Stitches | 9.83 per in 38.7 per 10 cm |
| Size | 24 in × 24 in 60.96 cm × 60.96 cm |
| Backing | Ecologix® Tile |
| Installation | <u>Direct Glue</u> |
| Approved Installation Method | Brick or Ashlar* |
| Warranty | <u>Lifetime Commercial Limited</u> |

*Shown in Brick



For sample, order BS773 color F0957.

Carpet Tile @ Corridor | CP-10 ALT



Shown in Brick Installation Method

- Elevator Lobby
- Corridor



Inset Broadloom Carpet @ Lobby | CP-11

| | |
|-----------------------|---|
| Style | BS822 |
| Color | F2823 |
| Product Type | Broadloom |
| Fiber | Eco Solution Q® Nylon |
| Dye Method | 100% Solution Dyed |
| Construction | Multi-Level Loop Tip Shear |
| Tufted Weight | 36 oz/yd² 1220.64 g/m² |
| Gauge | 1/10 in 39.37 per 10 cm |
| Stitches | 10 per in 39.37 per 10 cm |
| Size | 15 ft 4.57 m |
| Pattern Repeat | 180 in x 177.6 in 457.2 cm x 451.1 cm |
| Backing | Ultraloc® |
| Installation | Direct Glue |
| Warranty | Lifetime Commercial Limited |



For sample, order BS822 color F2823.

Inset Carpet Tile @ Lobby | CP-11 ALT

| | |
|-------------------------------------|---|
| Style | BS859 |
| Color | F4718 |
| Product Type | Carpet Tile |
| Fiber | Eco Solution Q® Nylon |
| Dye Method | 100% Solution Dyed |
| Construction | Multi-Level Loop Tip Shear |
| Tufted Weight | 30 oz/yd² 1017.2 g/m² |
| Gauge | 1/10 in 39.37 per 10 cm |
| Stitches | 9.17 per in 36.1 per 10 cm |
| Size | 24 in x 24 in 60.96 cm x 60.96 cm |
| Backing | Ecologix® Tile |
| Installation | Direct Glue |
| Approved Installation Method | Monolithic |
| Warranty | Lifetime Commercial Limited |

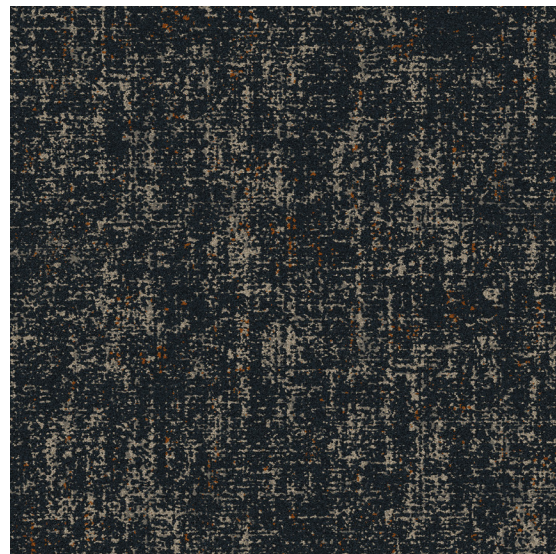


For sample, order BS859 color F4718.



Broadloom Carpet @ Flex Seating & Optional Meeting Space | CP-12

| | |
|-----------------------|---|
| Style | BS821 |
| Color | F2862 |
| Product Type | Broadloom |
| Fiber | Eco Solution Q® Nylon |
| Dye Method | 100% Solution Dyed |
| Construction | Multi-Level Loop Tip Shear |
| Tufted Weight | 36 oz/yd² 1220.64 g/m² |
| Gauge | 1/10 in 39.37 per 10 cm |
| Stitches | 10 per in 39.37 per 10 cm |
| Size | 15 ft 4.57 m |
| Pattern Repeat | 90 in × 91.2 in 228.6 cm × 231.65 cm |
| Backing | Ultraloc® |
| Installation | Direct Glue |
| Warranty | Lifetime Commercial Limited |

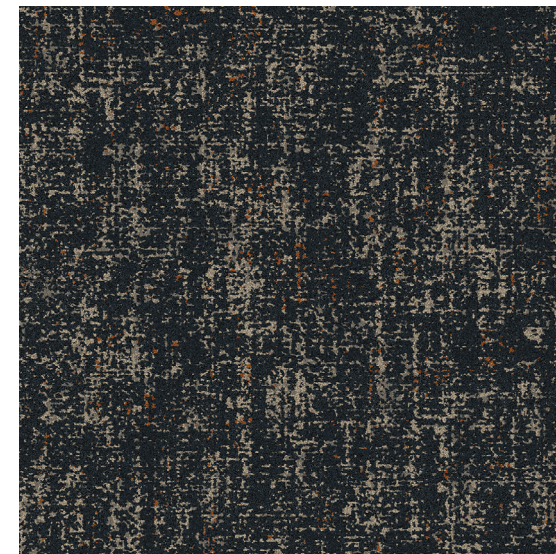


For sample, order BS821 color F2862.



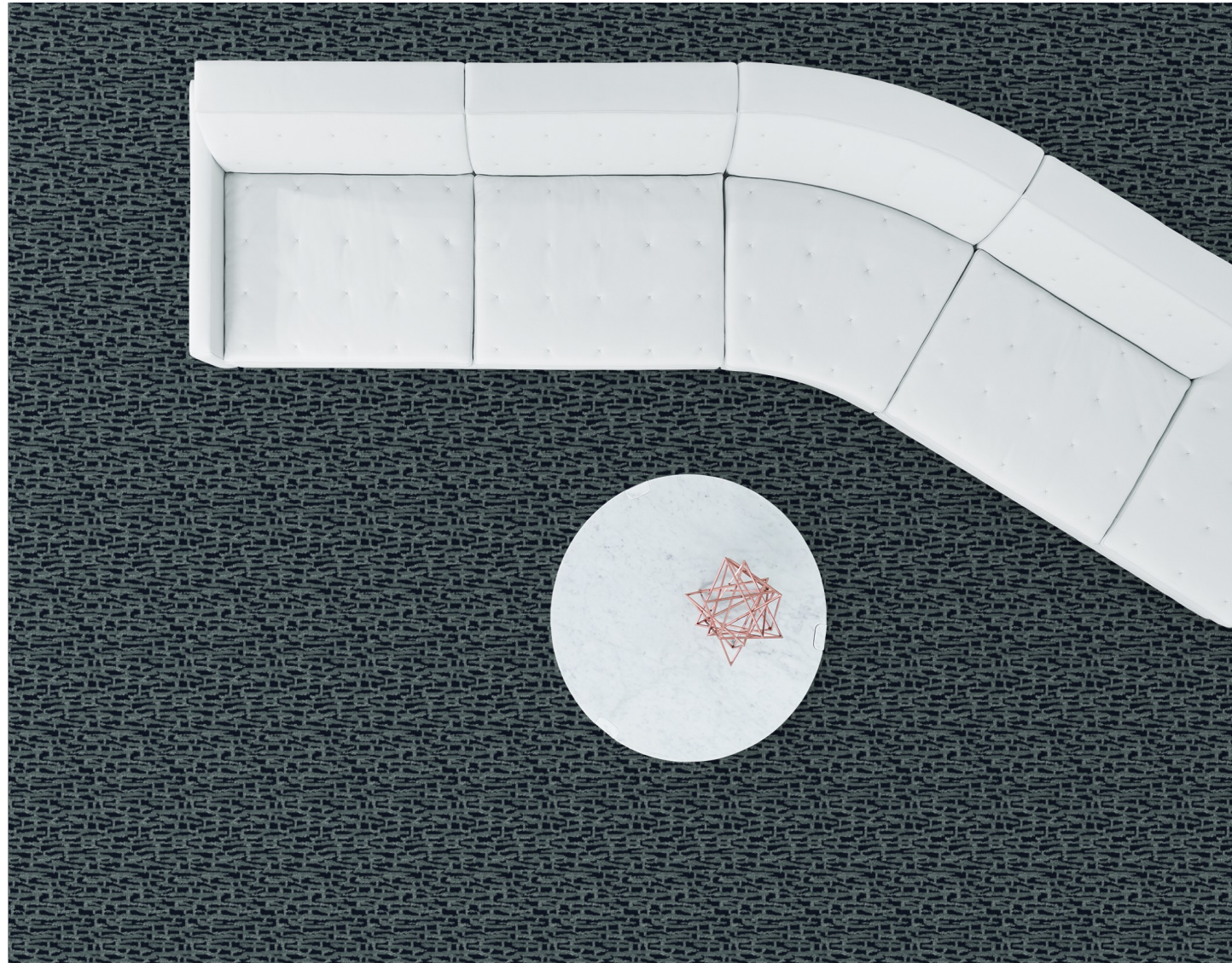
Carpet Tile @ Flex Seating & Optional Meeting Space | CP-12 ALT

| | |
|-------------------------------------|---|
| Style | BS870 |
| Color | F4335 |
| Product Type | Carpet Tile |
| Fiber | Eco Solution Q® Nylon |
| Dye Method | 100% Solution Dyed |
| Construction | Multi-Level Loop Tip Shear |
| Tufted Weight | 30 oz/yd² 1017.2 g/m² |
| Gauge | 1/10 in 39.37 per 10 cm |
| Stitches | 9.33 per in 36.73 per 10 cm |
| Size | 24 in × 24 in 60.96 cm × 60.96 cm |
| Backing | Ecologix® Tile |
| Installation | Direct Glue |
| Approved Installation Method | Brick or Ashlar* |
| Warranty | Lifetime Commercial Limited |



For sample, order BS870 color F4335.

*Shown in Brick

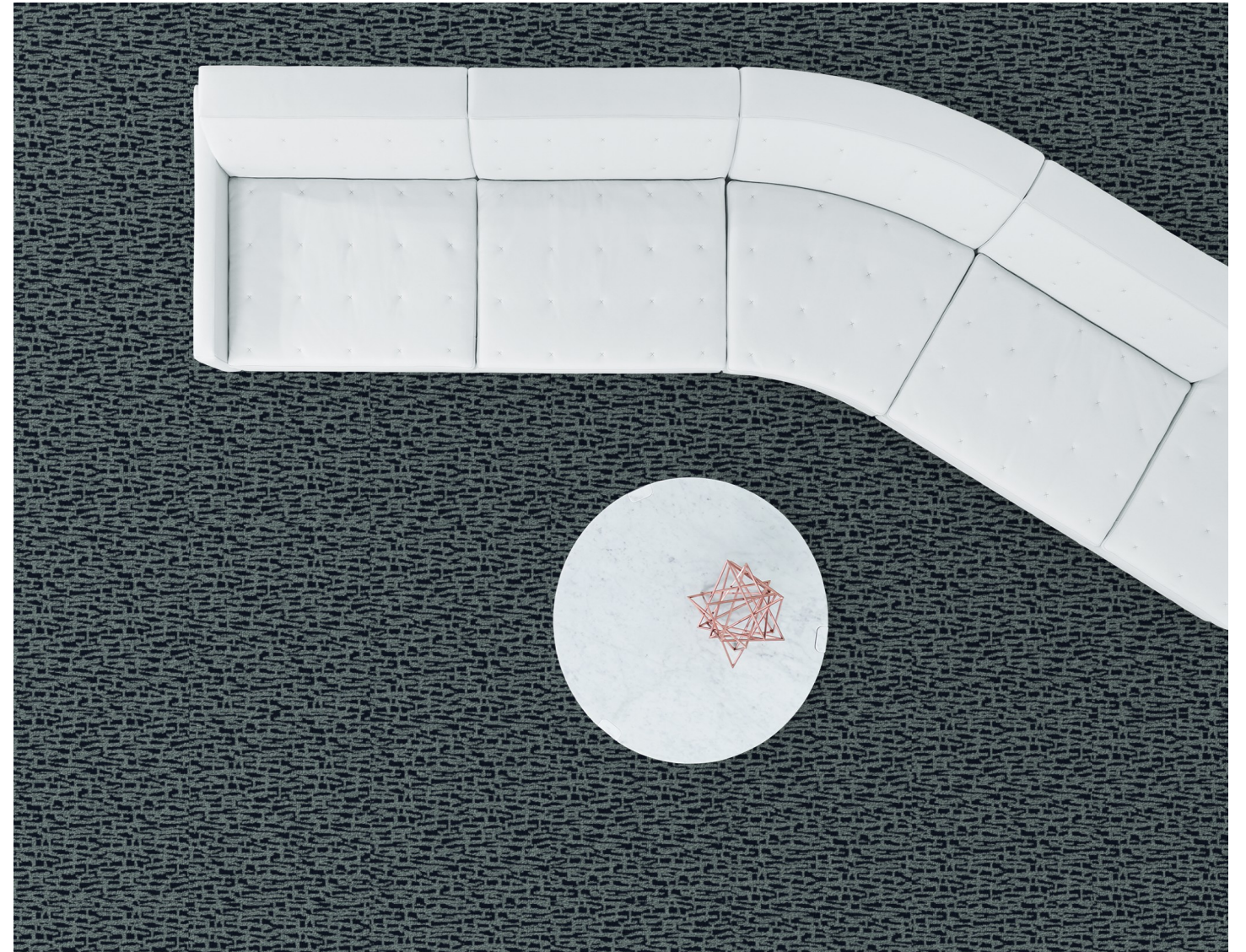


Broadloom Carpet @ BOH & Stairwells | CP-13

| | |
|-----------------------|--|
| Style | BS771 |
| Color | E8685 |
| Product Type | Broadloom |
| Fiber | Eco Solution Q® Nylon |
| Dye Method | 100% Solution Dyed |
| Construction | Multi-Level Loop Tip Shear |
| Tufted Weight | 32 oz/yd² 1085.01 g/m² |
| Gauge | 1/10 in 39.37 per 10 cm |
| Stitches | 13.33 per in 52.48 per 10 cm |
| Size | 12 ft 3.66 m |
| Pattern Repeat | 12 in x 18 in 30.48 cm x 45.72 cm |
| Backing | Classicbac® |
| Installation | Direct Glue |
| Warranty | 10 Year Commercial Limited |

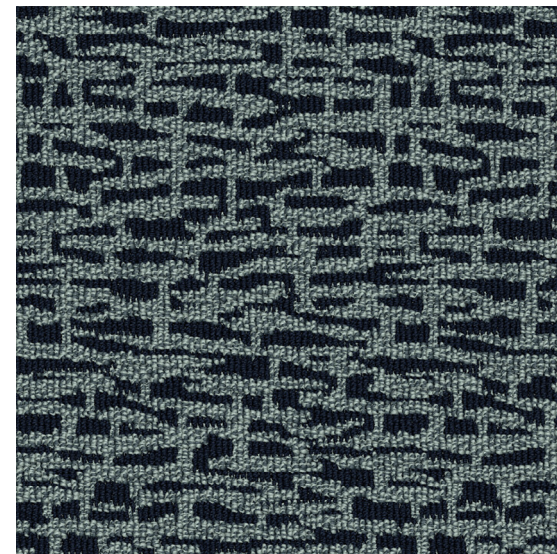


For sample, order BS771 color E8685.



Carpet Tile @ BOH & Stairwells | CP-13 ALT

| | |
|-------------------------------------|---|
| Style | BS772 |
| Color | F0114 |
| Product Type | Carpet Tile |
| Fiber | Eco Solution Q® Nylon |
| Dye Method | 100% Solution Dyed |
| Construction | Full Repeat Double Scroll |
| Tufted Weight | 26 oz/yd² 881.57 g/m² |
| Gauge | 1/10 in 39.37 per 10 cm |
| Stitches | 10.83 per in 42.64 per 10 cm |
| Size | 24 in x 24 in 60.96 cm x 60.96 cm |
| Backing | EcoWorx® Tile |
| Installation | Direct Glue |
| Approved Installation Method | Monolithic |
| Warranty | Lifetime Commercial Limited |



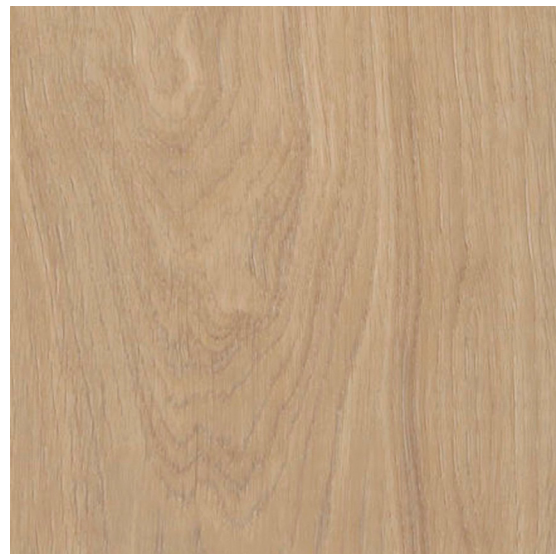
For sample, order BS772 color F0114.



LVT @ Breakroom | RF-11

| | |
|--------------------------------|--|
| Style | BS775 |
| Color | 56240 |
| Construction | Multilayer SPC with Acoustic Backing |
| Wear Layer Thickness | 20 mil 0.02 in 0.51 mm |
| Overall Thickness | 0.217 in 5.5 mm |
| Nominal Dimensions | 7 in x 48 in 18 cm x 122 cm |
| Actual Dimensions | 6.92 in x 48.03 in 17.58 cm x 122 cm |
| Installation | <u>Floating</u> |
| Approved Install Method | Stagger, Ashlar* |
| Area Per Box | 23.11 sq ft 10 pcs per box |
| Warranty | <u>15 Year Commercial Limited</u> |

*Shown in Stagger



For sample, order BS775 color 56240.

Additional Product Options

Carpet Base @ Guestroom | B-02 ALT

| | |
|---------------------|---------------------------|
| Style | BS829 |
| Color | 32110 |
| Product Type | Carpet Base |
| Size | 4 in |
| Warranty | 1 Year Commercial Limited |



For sample, order BS829 color 32110.

Carpet Base @ Corridor | B-13 ALT

| | |
|---------------------|---------------------------|
| Style | BS871 |
| Color | F6699 |
| Product Type | Carpet Base |
| Size | 4 in |
| Warranty | 1 Year Commercial Limited |



For sample, order BS871 color F6699.

Carpet Base @ Flex Seating & Optional Meeting Room | B-14 ALT

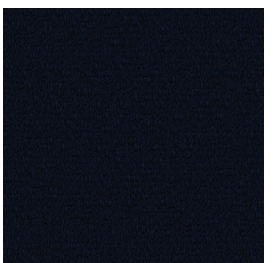
| | |
|---------------------|---------------------------|
| Style | BS827 |
| Color | F1509 |
| Product Type | Carpet Base |
| Size | 4 in |
| Warranty | 1 Year Commercial Limited |



For sample, order BS827 color F1509.

Carpet Base @ BOH & Stairwells | B-15 ALT

| | |
|---------------------|---------------------------|
| Style | BS890 |
| Color | F7108 |
| Product Type | Carpet Base |
| Size | 4 in |
| Warranty | 1 Year Commercial Limited |



For sample, order BS890 color F7108.

Additional Product Options

Resilient Base @ Guestroom, Corridor & Employee Breakroom | B-02, B-13

| | |
|--------------------------------------|-----------------------------|
| Style | BS823 |
| Color | 00125 |
| Product Type | Wall Base 4.5" Detail |
| Construction | Thermoplastic Rubber |
| Actual Dimensions | 96 in length x 4.5 in width |
| Linear ft per roll Pieces per roll | 48 6 |
| Warranty | 5 Year Commercial Limited |



For sample, order BS823 color 00125.

Resilient Base @ Flex Seating & Optional Meeting Room, Fitness & Computer/PBX | B-14, B-16

| | |
|--------------------------------------|-----------------------------|
| Style | BS865 |
| Color | 00098 |
| Product Type | Wall Base 4.5" Detail |
| Construction | Thermoplastic Rubber |
| Actual Dimensions | 96 in length x 4.5 in width |
| Linear ft per roll Pieces per roll | 48 6 |
| Warranty | 5 Year Commercial Limited |



For sample, order BS865 color 00098.

Resilient Base @ BOH | B-15

| | |
|--------------------------------------|-----------------------------|
| Style | BS849 |
| Color | 00013 |
| Product Type | Wall Base 4.5" Detail |
| Construction | Thermoplastic Rubber |
| Actual Dimensions | 96 in length x 4.5 in width |
| Linear ft per roll Pieces per roll | 48 6 |
| Warranty | 5 Year Commercial Limited |



For sample, order BS849 color 00013.

Additional Product Options

Broadloom Carpet Pad @ Guestroom | CPP-01

| | |
|-----------------------|--|
| Style | 132FS |
| Description | Fiber Select |
| Weight | 32 oz 1,085 g/m ² |
| Thickness | 0.312 in 7.92 mm |
| Density | 8.5 lb/ft ³ 136 kg/m ³ |
| Square yards per roll | 40 |

Broadloom Carpet Pad @ Corridor & Public Area | CPP-10

| | |
|-----------------------|---|
| Style | DW206 |
| Description | DuraWorx™ |
| Weight | 47 oz 1593 g/m ² |
| Thickness | 0.20 in 5.08 mm |
| Density | 19 lb/ft ³ 304 kg/m ³ |
| Square yards per roll | 30 |

Broadloom Adhesive

| | |
|-------------|-------------------------------------|
| Style | H1000 |
| Description | LokWorx+ Broadloom Adhesive 4 gal |
| Spread Rate | 8-10 sy per gal |

Carpet Tile Adhesive

| | |
|-------------|-------------------------------------|
| Style | N5000 |
| Description | LokWorx+ Broadloom Adhesive 4 gal |
| Spread Rate | 28-33 sy per gal |

LVT Adhesive

| | |
|-------------|-------------------------------|
| Style | 109VS |
| Description | Shaw 200 LVT Adhesive 4 gal |
| Spread Rate | 175-225 sf per gal |

Seam Sealer

| | |
|-------------|-------------------|
| Style | H4000 |
| Description | Shaw 4000 1 qt |
| Spread Rate | 550-600 lf per qt |

Cove Base Adhesive

| | | |
|-------------|-------------------|-----------------------|
| Style | 166VS | 141VS |
| Description | 1 gal | 12 30oz tubes per box |
| Spread Rate | 240 lf per gallon | 55-60 lf per tube |

