

SelectEDU



ShawContract®



Style Hub 5T459

Action 57580



Style Hub Accent 5T460

Action Garnet 57585



Style Poured 5T420

Garnet 06855



Style Terrain II 20 Mil 0454V
Slate 00540

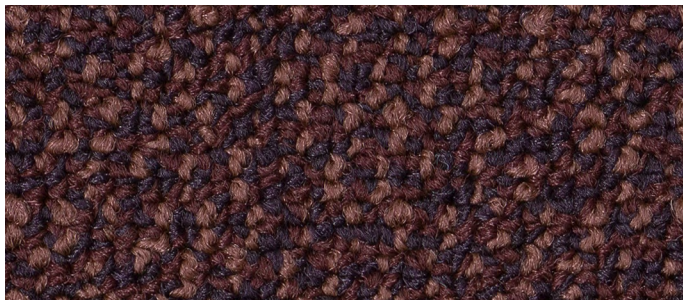


Style Terrain II 20 Mil 0454V
Graphite 00580



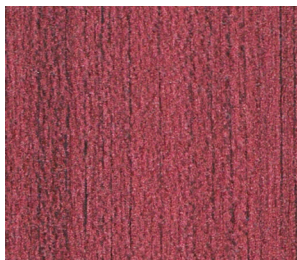
Style Hub Accent 5T460

Action Burgundy 57582

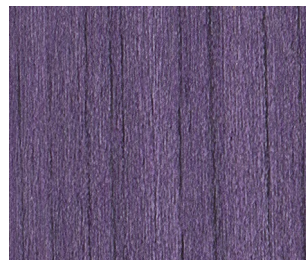


Style Poured 5T420

Spinal 06850



Style Terrain II 20 Mil 0454V
Cherry 00850



Style Terrain II 20 Mil 0454V
Violet 00965



Style Hub Accent 5T460

Action Aqua 57583



Style Poured 5T420

Turquoise 06323



Style Terrain II 20 Mil 0454V
Natural 00710

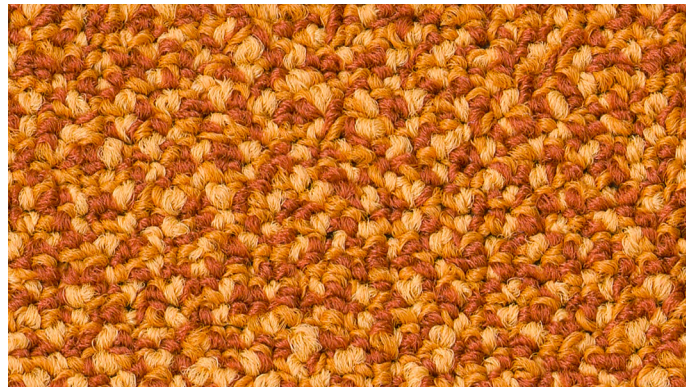


Style Terrain II 20 Mil 0454V
Aqua 00370



Style Hub Accent 5T460

Action Terracotta 57587

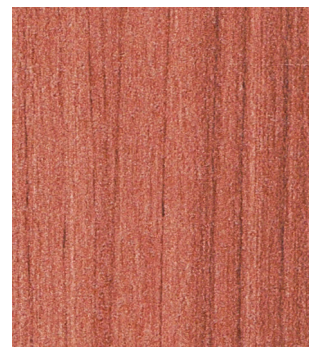


Style Poured 5T420

Topaz 06668



Style Terrain II 20 Mil 0454V
Terra 00600

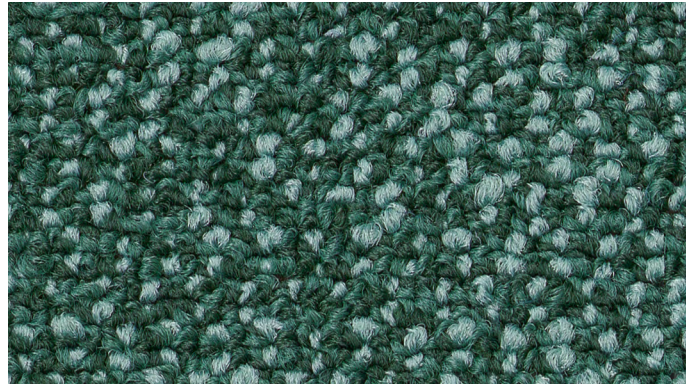


Style Terrain II 20 Mil 0454V
Redwood 00650



Style Hub Accent 5T460

Action Forest 57581



Style Poured 5T420

Jade 06396



Style Terrain II 20 Mil 0454V
Olive 00350

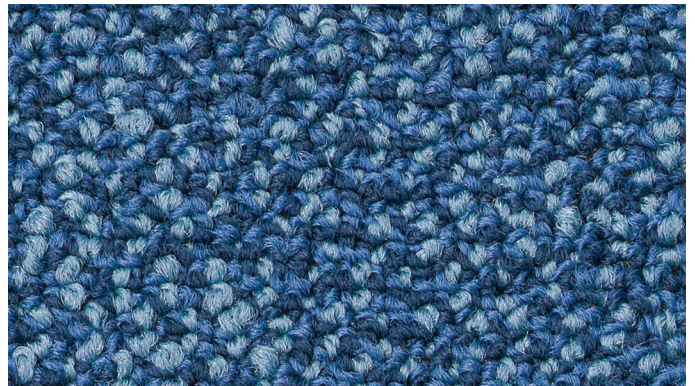


Style Terrain II 20 Mil 0454V
Spruce 00360



Style Hub Accent 5T460

Action Blue 57584



Style Poured 5T420

Lapis 06486



Style Terrain II 20 Mil 0454V
Azure 00400



Style Terrain II 20 Mil 0454V
Ink 00450



Hub



Hub Accent





Poured






Terrain II

SelectEDU

 Available up to 250 sq yds to ship within two weeks or less.

 Available up to 2,500 sq yds to ship within two weeks or less.
****Our Quick Ship program is updated periodically. Please visit shawcontract.com to view our most recent Quick Ship offering.**

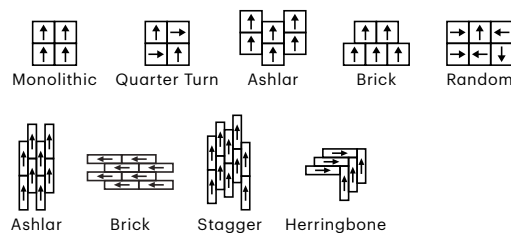
Specifications

Style Name	Hub 	Hub Accent 	Poured 
Style Number	5T459	5T460	5T420
Construction	Multi-level Pattern Loop	Multi-level Pattern Loop	Multi-level Pattern Loop
Fiber	Solution Q® Nylon	Solution Q® Nylon	EcoSolution Q® Nylon
Dye Method	100% Solution Dyed	100% Solution Dyed	100% Solution Dyed
	US Units	Metric Units	US Units
Tufted Weight	15.0 oz/yd ²	508.6 g/m ²	15.0 oz/yd ²
Gauge	1/10	39.4 per 10 cm	1/12
Stitches per Inch	9.5	38.0 per 10 cm	8.5
Finished Pile Thickness	0.096 in	2.44 mm	0.078 in
Average Density	5,625 oz/yd ³	0.208 g/cm ³	7,385 oz/yd ³
Kilotex		8.13	
Product Size	24 in × 24 in	61 cm × 61 cm	24 in × 24 in
Area Per Carton	80 ft ²	7.43 m ²	80 ft ²
Pieces Per Carton	20 pcs		20 pcs
Secondary Backing	Strataworx® Tile		Strataworx® Tile
Protective Treatments	SSP® Shaw Soil Protection	SSP® Shaw Soil Protection	SSP® Shaw Soil Protection
Radiant Panel	(ASTM E 648) Class I	(ASTM E 648) Class I	(ASTM E 648) Class I
NBS Smoke	(ASTM E 662) < 450	(ASTM E 662) < 450	(ASTM E 662) < 450
Electrostatic Propensity	Less Than 3.5 kV, Built-in	Less Than 3.5 kV, Built-in	Less Than 3.5 kV, Built-in
	Permanent Conductive Fiber	Permanent Conductive Fiber	Permanent Conductive Fiber
Cradle to Cradle Certified®	Silver Level (Version 4.0)	Silver Level (Version 4.0)	Silver Level (Version 4.0)
Warranty*	15 Year Commercial Limited	15 Year Commercial Limited	15 Year Commercial Limited

Coordinating LVT

Style Name	Terrain II 20 Mil
Style Number	0454V
Construction	Heavy Commercial Luxury Vinyl
Finish	ExoGuard+®
	US Units
Nominal Dimensions	6 in × 48 in
Wear Layer Thickness	0.02 in
Overall Thickness	0.098 in
Warranty*	15 Year Commercial Limited

Recommended Installation Methods



*For detailed warranty and the most accurate information on recycled content visit shawcontract.com.

This carpet is manufactured and sold for floor covering use only. Chair pads are recommended under office chairs with roller casters in order to protect appearance retention and to avoid premature wear. Walk off tiles are recommended at building entrances. As with all carpets, colors are subject to dye lot variations. Shading is the result of pile distortion and often is described as "watermarking". This does not constitute a manufacturing defect. To meet warranty requirements, approved adhesives and seam sealers must be used for glue-down application, consult shawcontract.com for more information. This carpet is an exclusive design and may not be duplicated in any manner. Use of this design in the creation of another carpet design is also strictly prohibited. Specifications are subject to nominal manufacturing variances. Material supply and/or manufacturing processes may necessitate specification changes without notice. Visit shawcontract.com/testing for more information.