



SelectONE

A StrataWorx® Collection

ShawContract®

A Single Source Solution

SelectONE is a **quick ship** collection that brings together our design and segment expertise to meet your needs for high-performing, budget-driven choices.

Thoughtfully curated into one easy access collection: **StrataWorx**[®] carpet tiles from our classic styles *Poured*, *Diffuse* and *Surround* are paired with coordinating LVT choices. This turnkey collection puts everything in one place, ready to ship in one streamlined process. The only decision left to make is the delivery date.

DIFFUSE—Creativity and flexibility come together in a freeform style punctuated with shots of bright color against a background of subtle tones.

DIFFUSE (CARPET TILE 5T419) IN ROUTES (75500) | INSTALLED MONOLITHIC



SURROUND—Surround yourself with functionality, a practical choice that blends random lines and neutral colors in a non-directional pattern that sits in easy harmony with hard surfaces.

SURROUND (CARPET TILE 5T421) IN LIMESTONE (17530) | INSTALLED MONOLITHIC



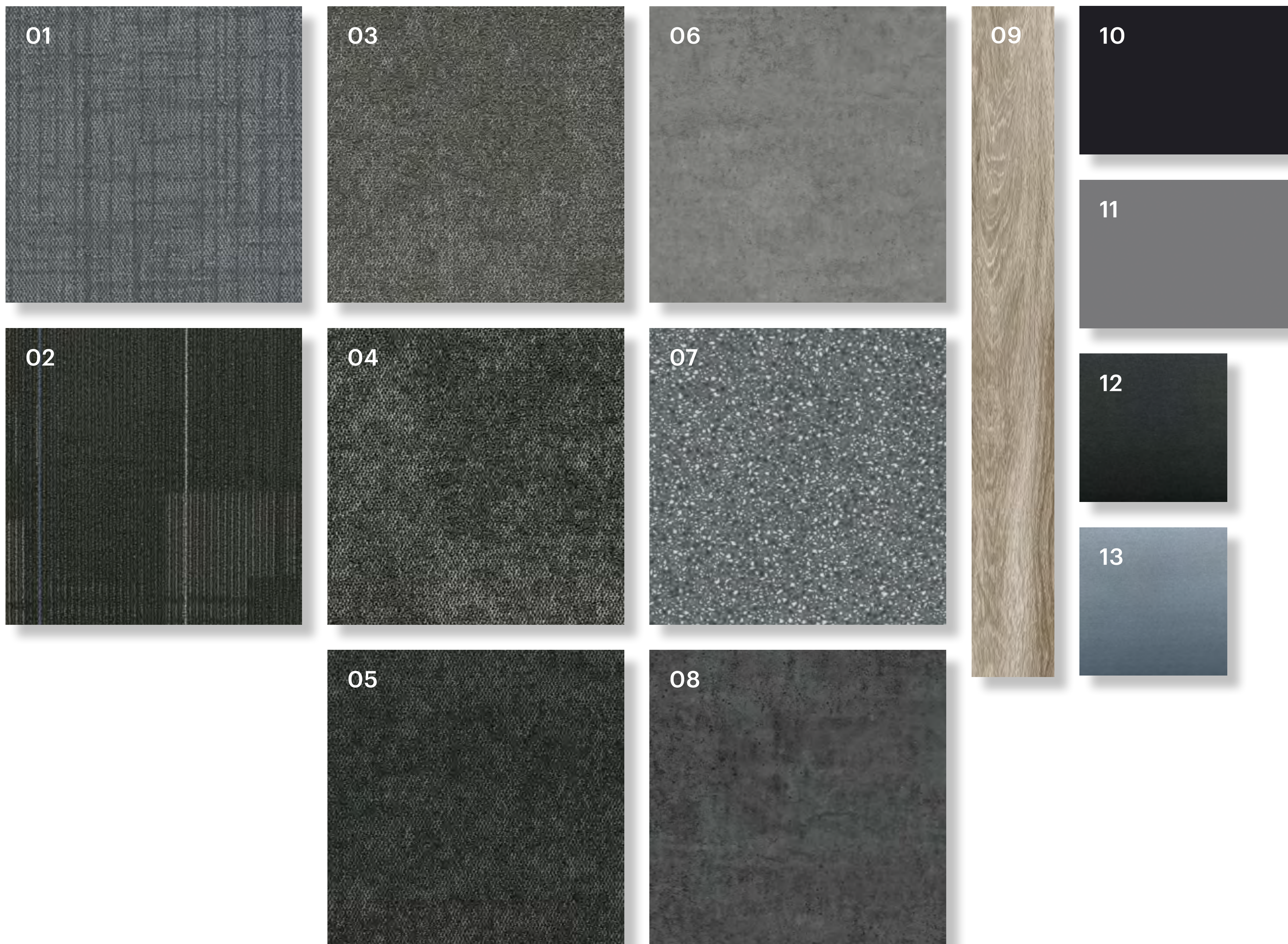
POURED—Inspired by poured concrete, the subtle palette and authentic visuals create a bold design statement.

POURED (CARPET TILE 5T420) IN RIVER ROCK (06481) | INSTALLED MONOLITHIC



Curated to Make Life Easier

Complete your space using a single-source provider. *SelectONE* coordinates with a wide range of wall base options and our *Finish* micro-transition strips. For additional color palette inspiration visit shawcontract.com.



01. **SURROUND**
 (CARPET TILE 5T421)
 IN BLUE HERRING (17481)
 24 × 24 IN

03. **POURED**
 (CARPET TILE 5T420)
 IN RIVER ROCK (06481)
 24 × 24 IN

05. **POURED**
 (CARPET TILE 5T420)
 IN GRANITE (06500)
 24 × 24 IN

07. **CAST**
 (LVT 4097V)
 IN INSTILL (98585)
 24 × 24 IN

09. **TERRAIN**
 (LVT 0454V)
 IN TIMBER (00572)
 6 × 48 IN

11. **4 INCH WALL BASE**
 (WALL BASE 148VS)
 IN SLATE (00580)

13. **FINISH**
 (MICRO-TRANSITION
 269VS)
 IN SILVER (00500)

02. **DIFFUSE**
 (CARPET TILE 5T419)
 IN MAGNETIC FIELDS
 (75505) | 24 × 24 IN

04. **POURED**
 (CARPET TILE 5T420)
 IN AGGREGATE (06501)
 24 × 24 IN

06. **COMPOUND**
 (LVT 4074V)
 IN ELEVATE (77518)
 24 × 24 IN

08. **COMPOUND**
 (LVT 4074V)
 IN GRANITE (77585)
 24 × 24 IN

10. **4 INCH WALL BASE**
 (WALL BASE 148VS)
 IN BLACK (0001)

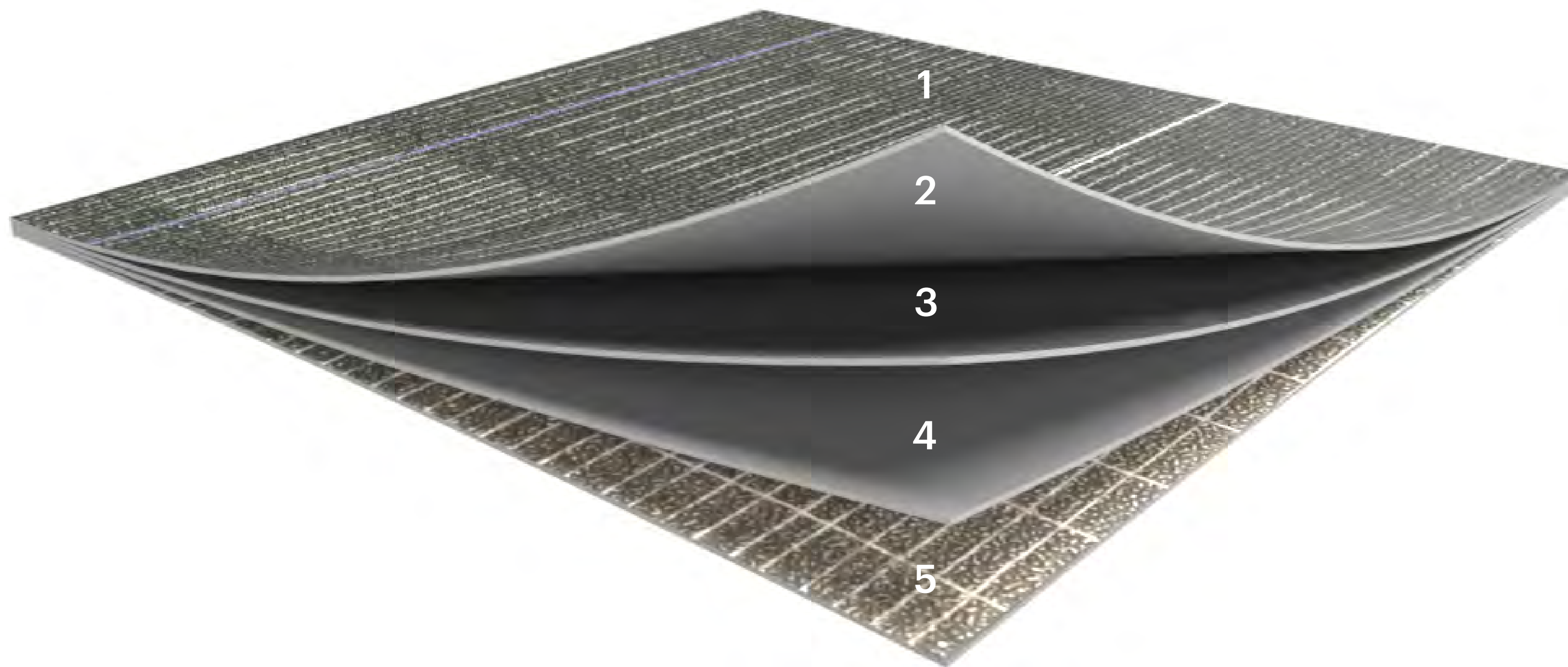
12. **FINISH**
 (MICRO-TRANSITION
 269VS)
 IN ONYX (00595)

“SelectONE is focused on value through innovation and service. With this collection, we emphasize the need for economical, foundational carpet tiles.”

Daniel Collins, Workplace + Retail Marketing Director

StrataWorx[®]

StrataWorx[®] is a lightweight polymer composite backing system engineered for efficiency in manufacturing, transportation, and at the job site. StrataWorx is PVC-free and contains 30% pre-consumer recycled content. StrataWorx is designed as a durable carpet tile with an accessible price point.



1. Face Yarn

Eco Solution Q[®] fiber provides long-lasting durability and stain resistance.

2. Primary Backing

High-strength primary backing is non-woven and adds dimensional stability to the product.

3. Performance Precoat

Performance precoat provides tuft bind, ensuring all tufts stay in place.

4. Thermoplastic Compound

Thermoplastic compound laminate bonds the carpet face with the backing for superior strength against delamination.

5. PET / Fiberglass Composite Reinforcement

PET / fiberglass reinforcement creates stability.



Cradle to Cradle Certified™

Designed and assessed for environmental and social performance across five critical sustainability categories: material health, material reuse, renewable energy and carbon management, water stewardship, and social fairness.



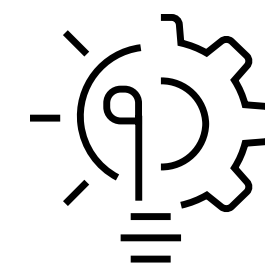
Indoor Air Quality

People spend 90% of their time indoors, making these environments critical to our wellbeing. This product is Green Label Plus (GLP) Certified, meeting the California Department of Public Health (CDPH) indoor air quality standards for low-emitting products.



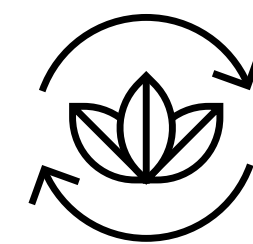
Faster Installation Reduces Cost

Time is money. StrataWorx® is designed for efficiency, ease of handling, installation, and storage, with up to 20 tiles per box. This results in reduced cost, less waste and a faster installation than traditional broadloom.



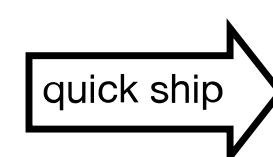
Value Through Innovation

StrataWorx® is a lightweight polymer composite backing that is PVC-free and contains 30% pre-consumer recycled content. Engineered for efficiency in manufacturing, transportation and at the job site, StrataWorx is designed as a durable carpet tile at an accessible price point.



Reduces Waste

Carpet tiles are easier to install, lift and move compared to broadloom carpet. Their modularity typically produces a 10% reduction in waste during installation.



Quick Ship

With Quick Ship products, you can order material when you need it—up to 2,500 square yards—and it will ship within two weeks or less.

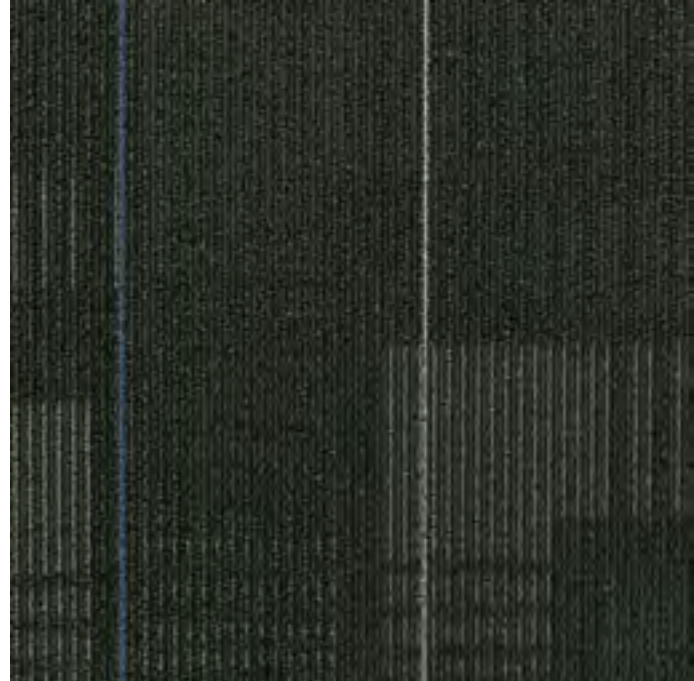
POURED (CARPET TILE 5T420) IN RIVER ROCK (06481) | INSTALLED MONOLITHIC AND COMPOUND (LVT 4074V) IN THRESHOLD (77515) | INSTALLED BRICK



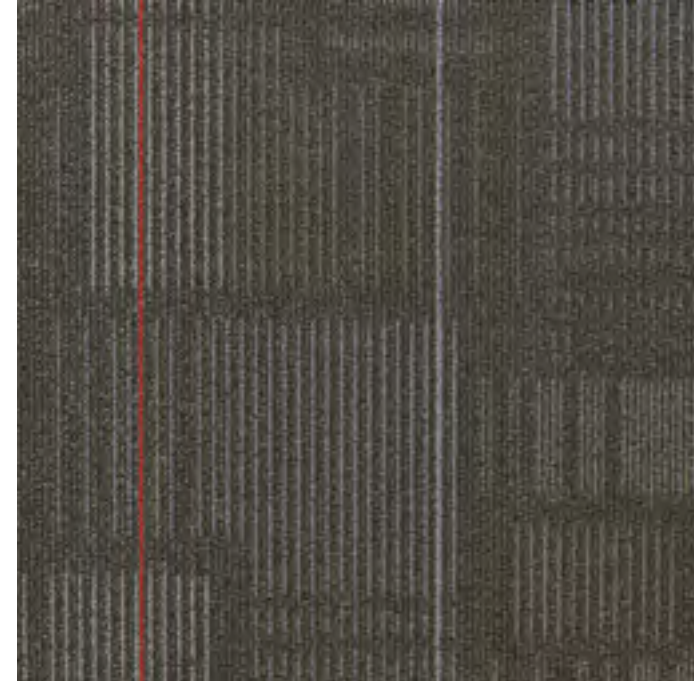
Colorways

Diffuse 5T419

4 Neutrals



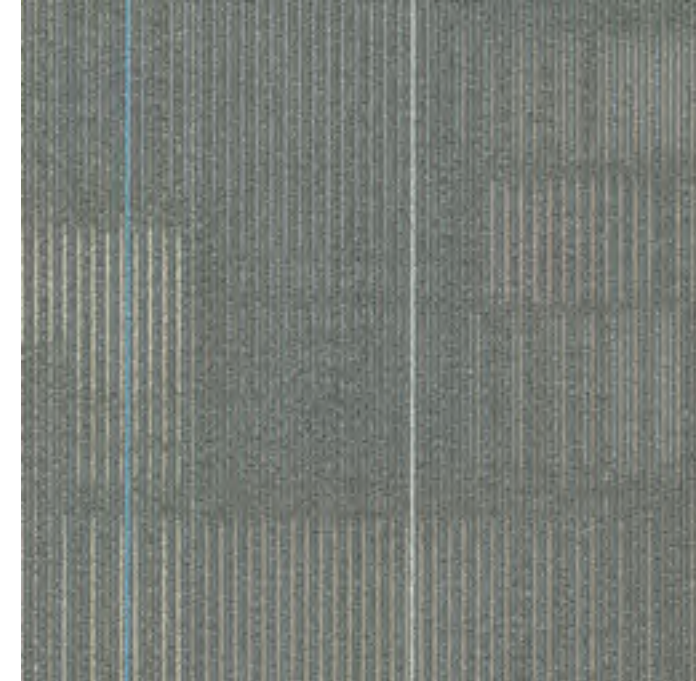
Magnetic Fields
75505



Routes
75500



Flutter
75761



Passport
75597

Poured 5T420

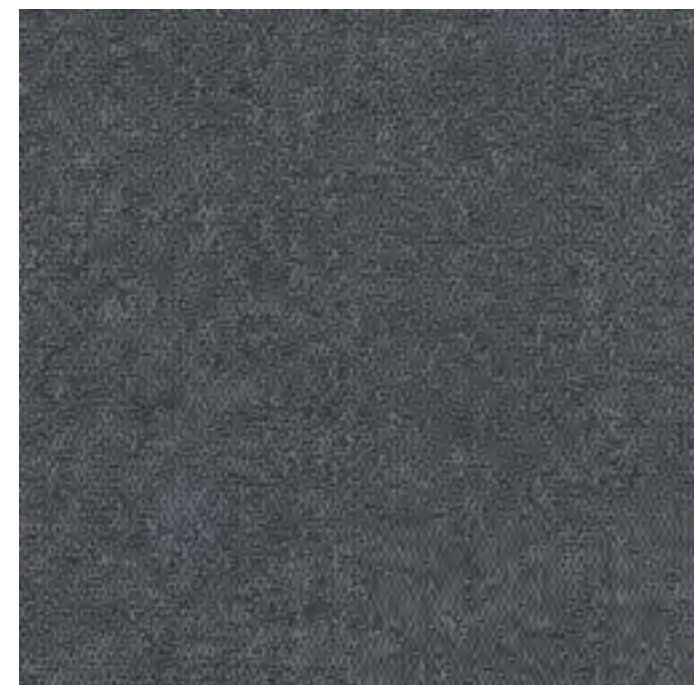
4 Neutrals



Granite
06500



Aggregate
06501



River Rock
06481



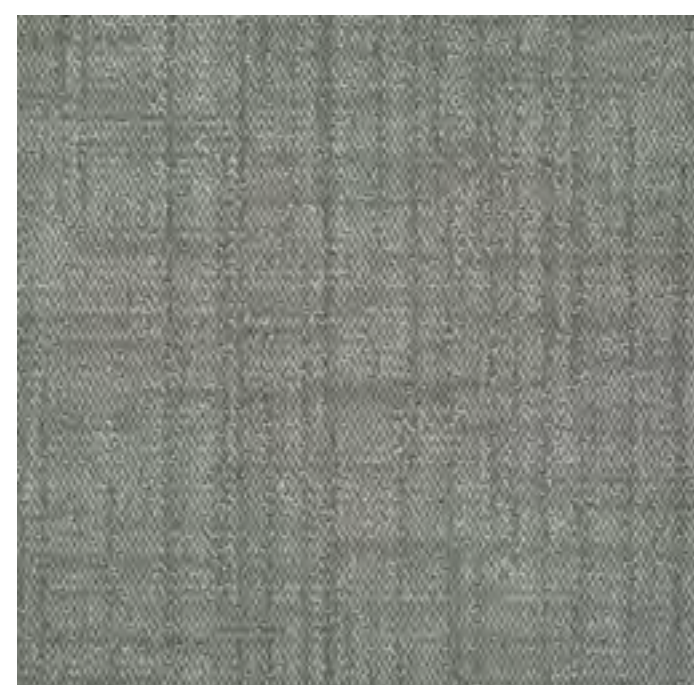
Mortar
06530

Surround 5T421

3 Neutrals + Navy



Blue Herring
17481



Limestone
17530



Storm Cloud
17597

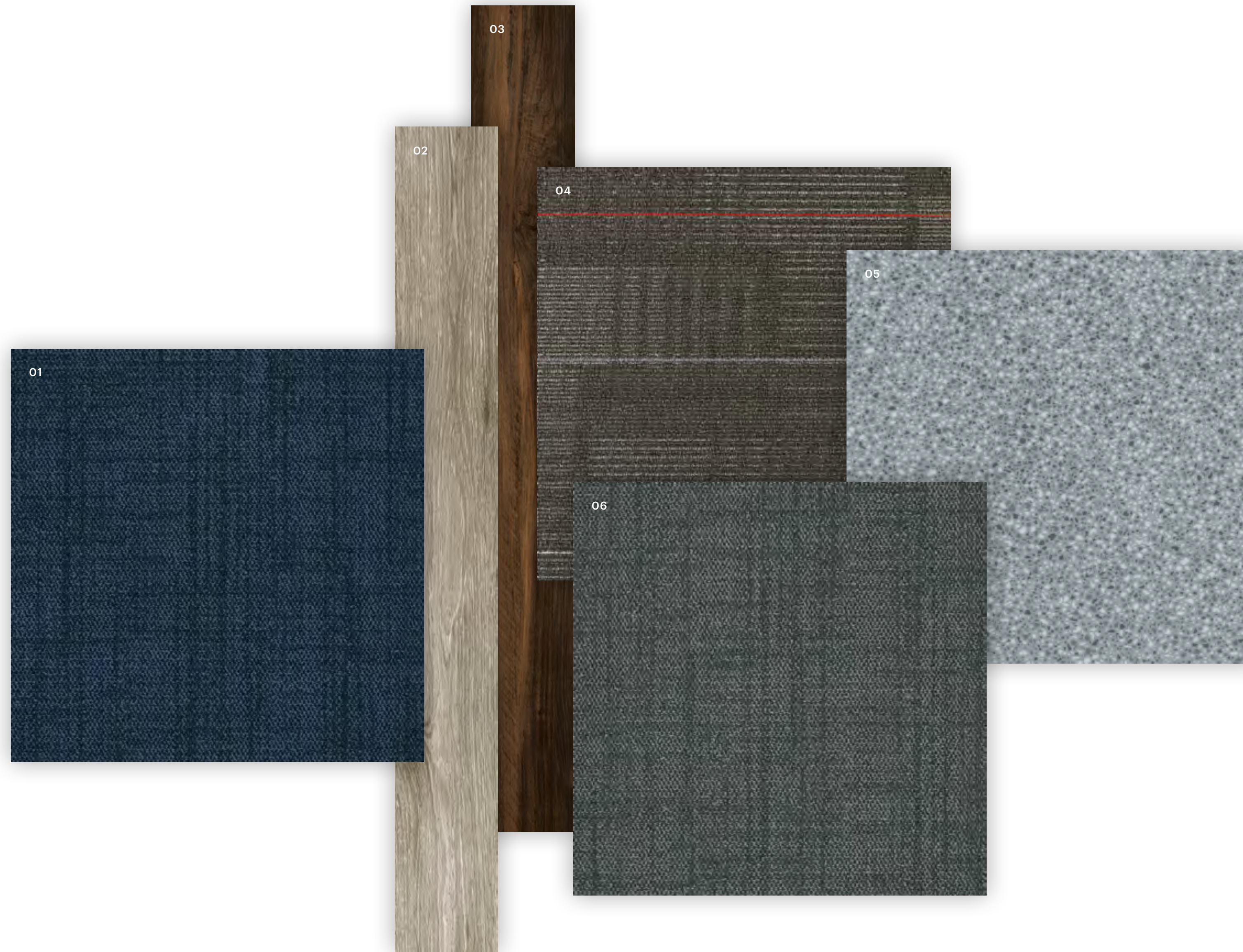


Denim
17496

SURROUND (CARPET TILE 5T421) IN LIMESTONE (17530) | INSTALLED MONOLITHIC AND CAST (LVT 4097V) IN UNBOUND (98114) | INSTALLED BRICK



Palettes



Traditional

- 01. SURROUND
(CARPET TILE 5T421)
IN DENIM (17496)
24 × 24 IN
- 02. TERRAIN
(LVT 0454V)
IN TIMBER (00572)
6 × 48 IN
- 03. TERRAIN
(LVT 0454V)
IN GROVE (00769)
6 × 48 IN
- 04. DIFFUSE
(CARPET TILE 5T419)
IN ROUTES (75500)
24 × 24 IN
- 05. CAST
(LVT 4097V)
IN CORE (98518)
24 × 24 IN
- 06. SURROUND
(CARPET TILE 5T421)
IN STORM CLOUD (17597)
24 × 24 IN
- 07. BENJAMIN MOORE
(INTERIOR PAINT)
STRATFORD BLUE (831)
TAOS TAUPE (2111-40)
BRILLIANT WHITE (OC-150)
- 08. 4 IN COVE BASE
(WALL BASE 148VS)
DARK (00680)
CEMENT (00750)
- 09. FINISH
(MICRO-TRANSITION 269VS)
ONYX (00595)
CHAMPAGNE (00100)

07. BENJAMIN MOORE

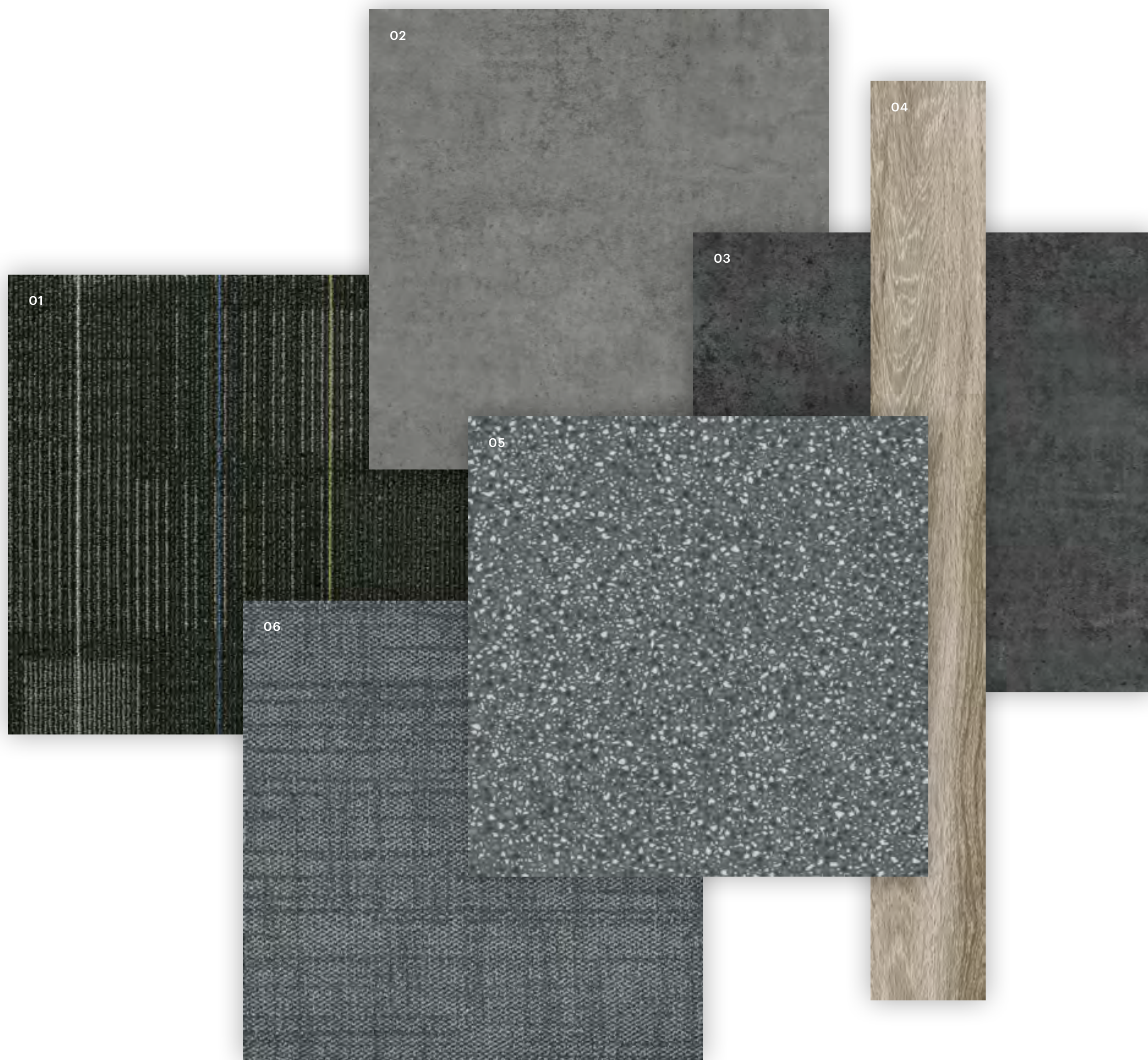


08. 4" COVE BASE



09. FINISH





Refresh

- 01. DIFFUSE
(CARPET TILE 5T419)
IN MAGNETIC FIELDS (75505)
24 × 24 IN
- 02. COMPOUND
(LVT 4074V)
IN ELEVATE (77518)
24 × 24 IN
- 03. COMPOUND
(LVT 4074V)
IN GRANITE (77585)
24 × 24 IN
- 04. TERRAIN
(LVT 0454V)
IN TIMBER (00572)
6 × 48 IN
- 05. CAST
(LVT 4097V)
IN INSTILL (98585)
24 × 24 IN
- 06. SURROUND
(CARPET TILE 5T421)
IN BLUE HERRING (17481)
24 × 24 IN
- 07. BENJAMIN MOORE
(INTERIOR PAINT)
WROUGHT IRON (2124-10)
GRAY (2121-10)
BRILLIANT WHITE (OC-150)
- 08. 4 IN COVE BASE
(WALL BASE 148VS)
BLACK (00001)
SLATE (00580)
- 09. FINISH
(MICRO-TRANSITION 269VS)
ONYX (00595)
SILVER (00500)

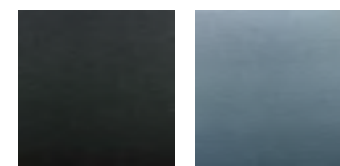
07. BENJAMIN MOORE



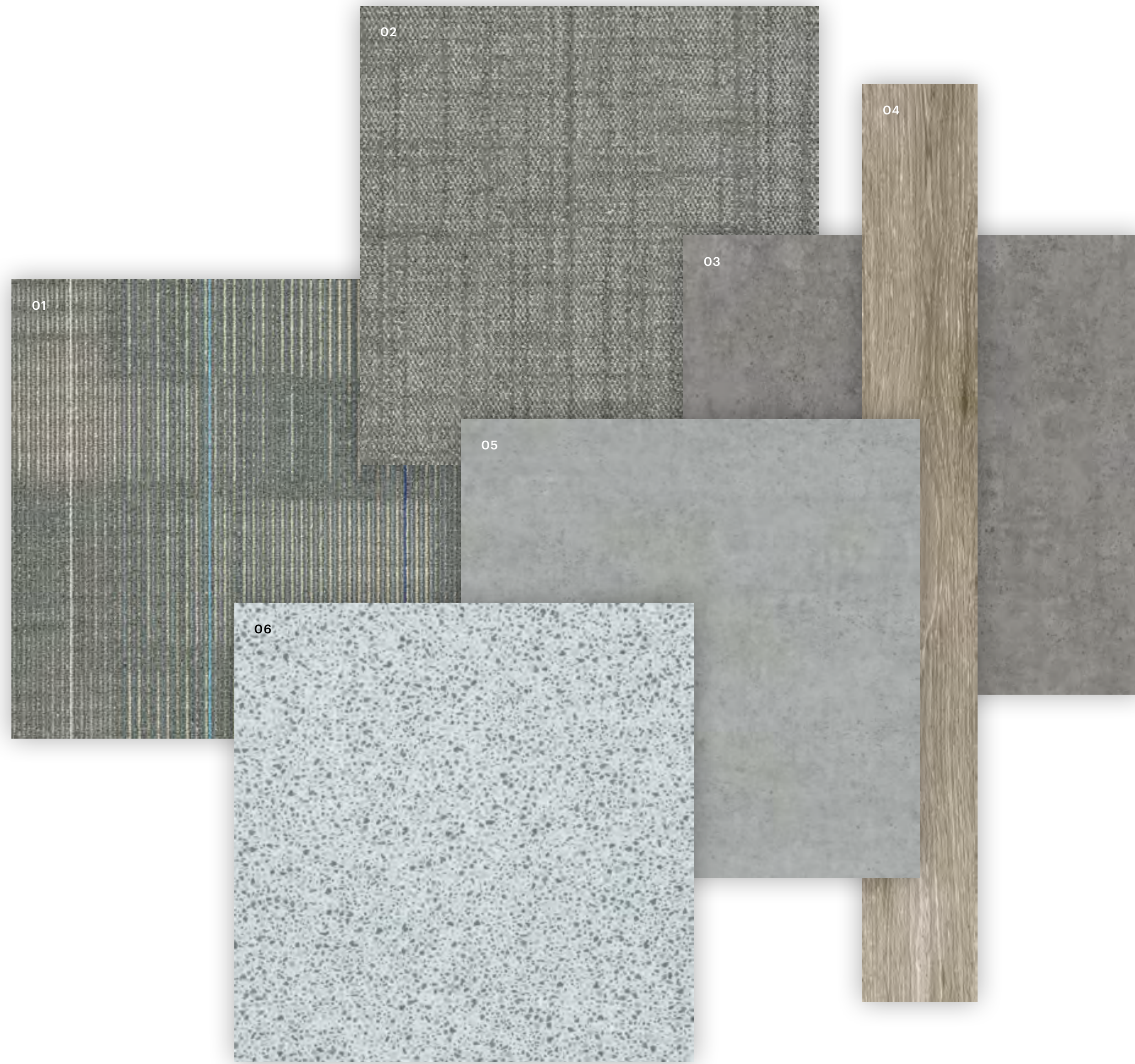
08. 4" COVE BASE



09. FINISH



Optimistic



- 01. DIFFUSE
(CARPET TILE 5T419)
IN PASSPORT (75597)
24 × 24 IN
- 02. SURROUND
(CARPET TILE 5T421)
IN LIMESTONE (17530)
24 × 24 IN
- 03. COMPOUND
(LVT 4074V)
IN CHISEL (77520)
24 × 24 IN
- 04. TERRAIN
(LVT 0454V)
IN TIMBER (00572)
6 × 48 IN
- 05. COMPOUND
(LVT 4074V)
IN THRESHOLD (77515)
24 × 24 IN
- 06. CAST
(LVT 4097V)
IN COMPOSITE (98515)
24 × 24 IN
- 07. BENJAMIN MOORE
(INTERIOR PAINT)
TAOS TAUPE (2111-40)
STONE HARBOR (2111-50)
FULL MOON (2119-70)
- 08. 4 IN COVE BASE
(WALL BASE 148VS)
NIGHT (00066)
CEMENT (00750)
- 09. FINISH
(MICRO-TRANSITION 269VS)
ONYX (00595)
SILVER (00500)

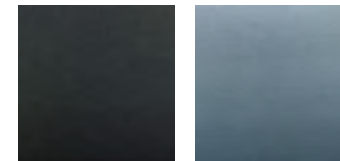
07. BENJAMIN MOORE



08. 4" COVE BASE



09. FINISH



Earth

- 01. DIFFUSE
(CARPET TILE 5T419)
IN FLUTTER (75761)
24 × 24 IN
- 02. TERRAIN
(LVT 0454V)
IN ROOT (00568)
6 × 48 IN
- 03. TERRAIN
(LVT 0454V)
IN ECHO (00775)
6 × 48 IN
- 04. CAST
(LVT 4097V)
IN UNBOUND (98114)
24 × 24 IN
- 05. BENJAMIN MOORE
(INTERIOR PAINT)
INDIAN RIVER (985)
BAY HARBOR BEIGE (1032)
BRILLIANT WHITE (OC-150)
- 06. 4 IN COVE BASE
(WALL BASE 148VS)
IN EARTHEN (00770)
- 07. FINISH
(MICRO-TRANSITION 269VS)
GOLD (00150)
CHAMPAGNE (00100)



05. BENJAMIN MOORE



06. 4" COVE BASE

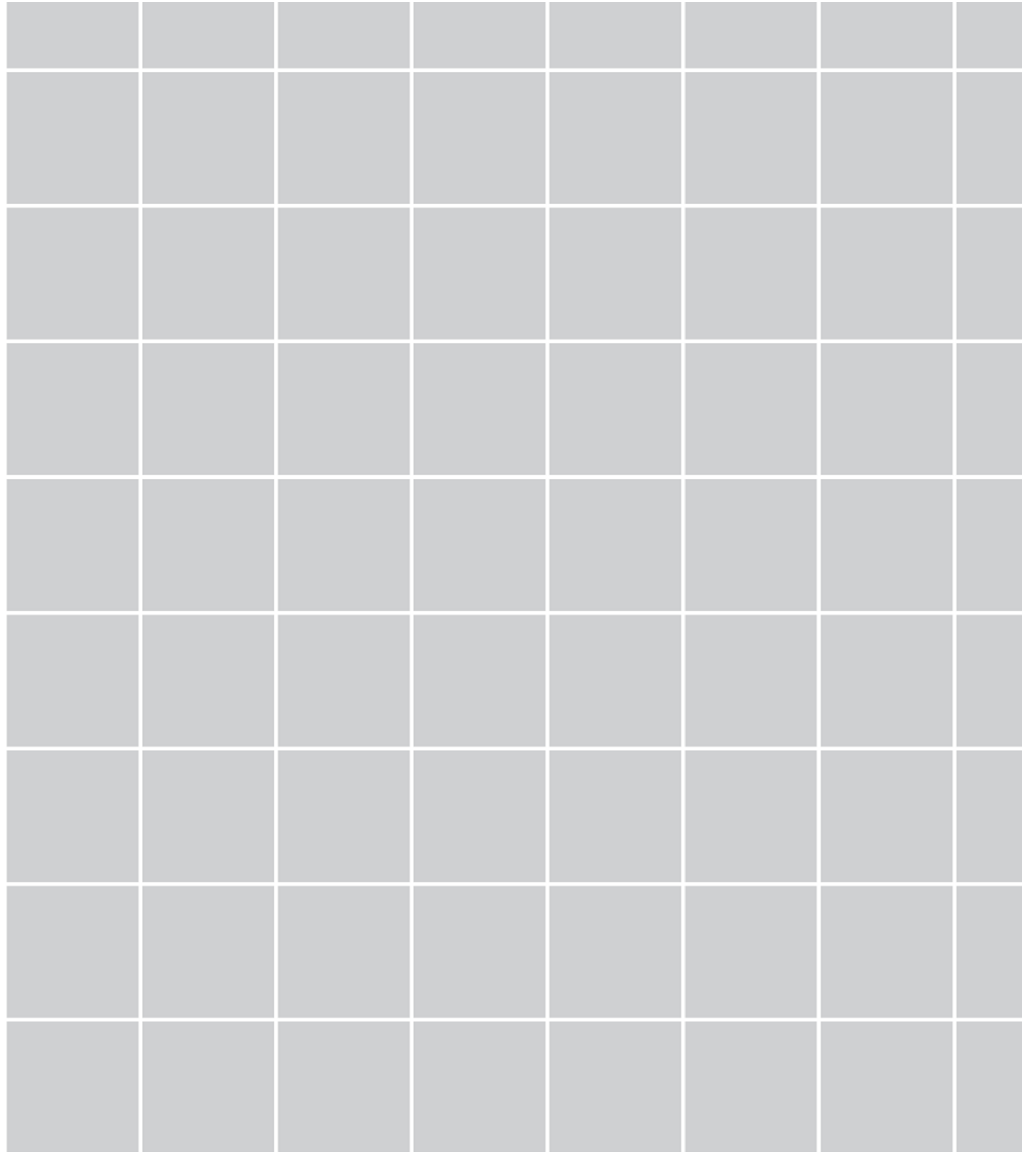


07. FINISH





Installation 01



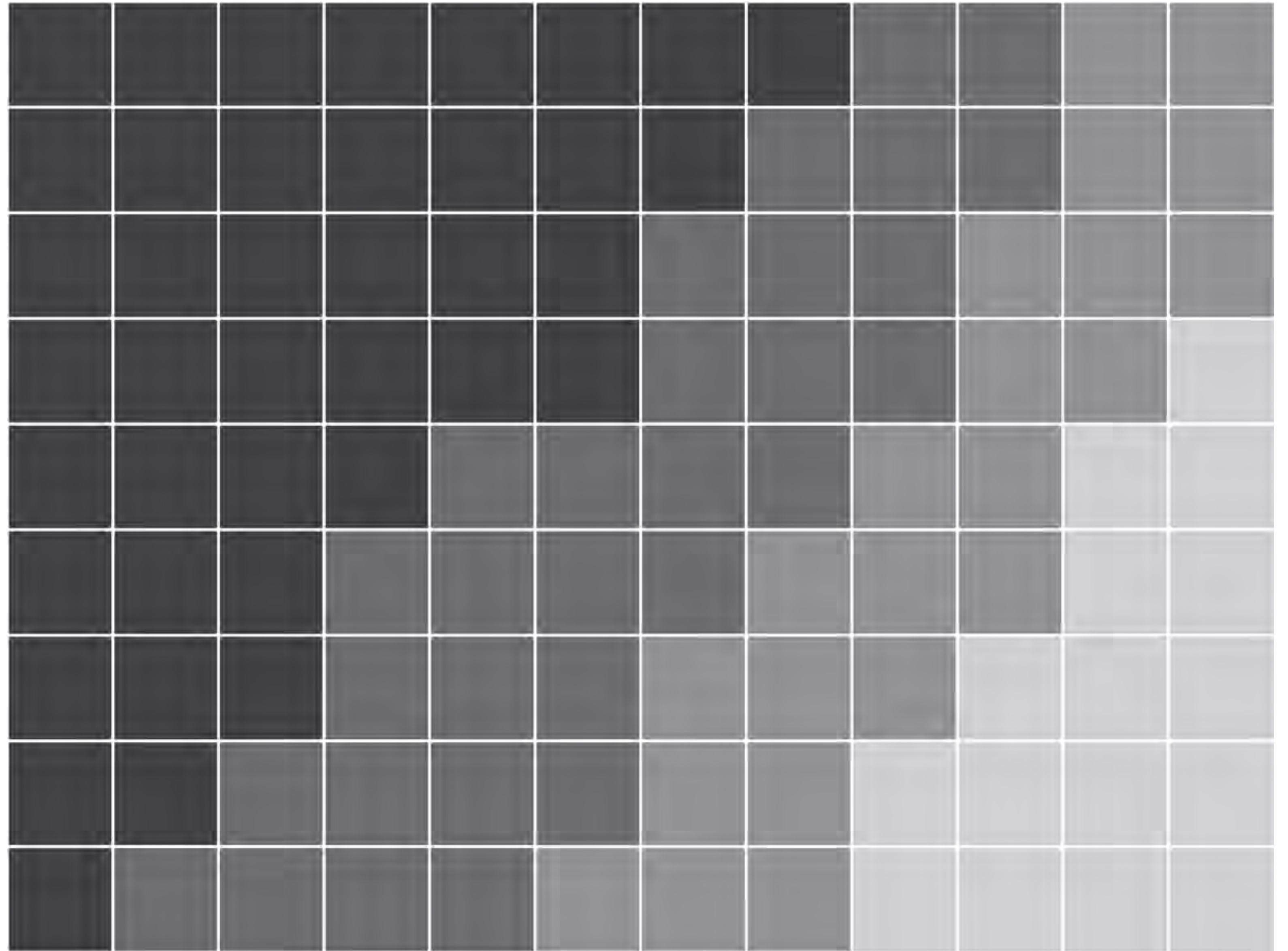
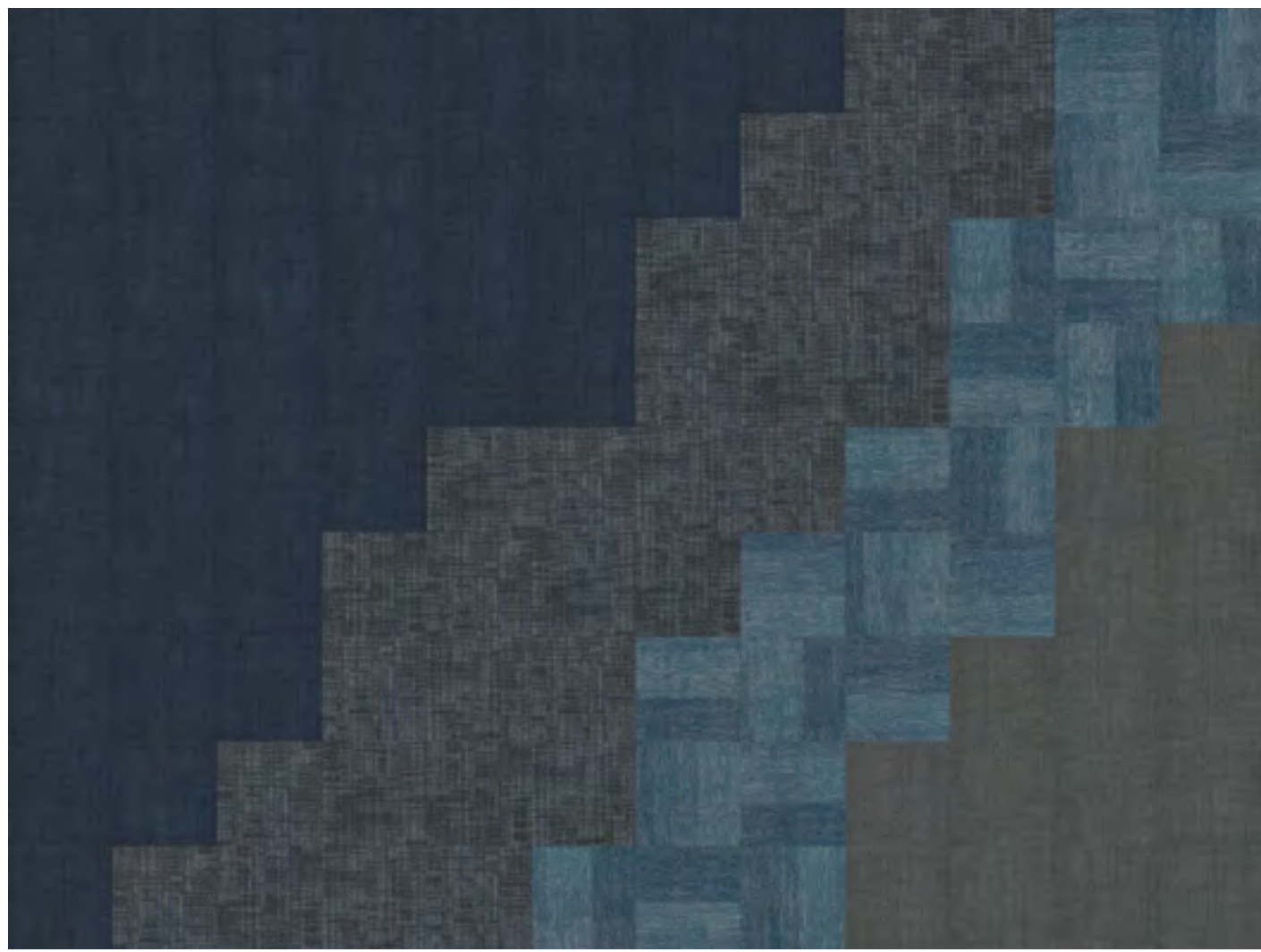
Diffuse Carpet Tile (5T419) in Magnetic Fields (75505)



Installation 02



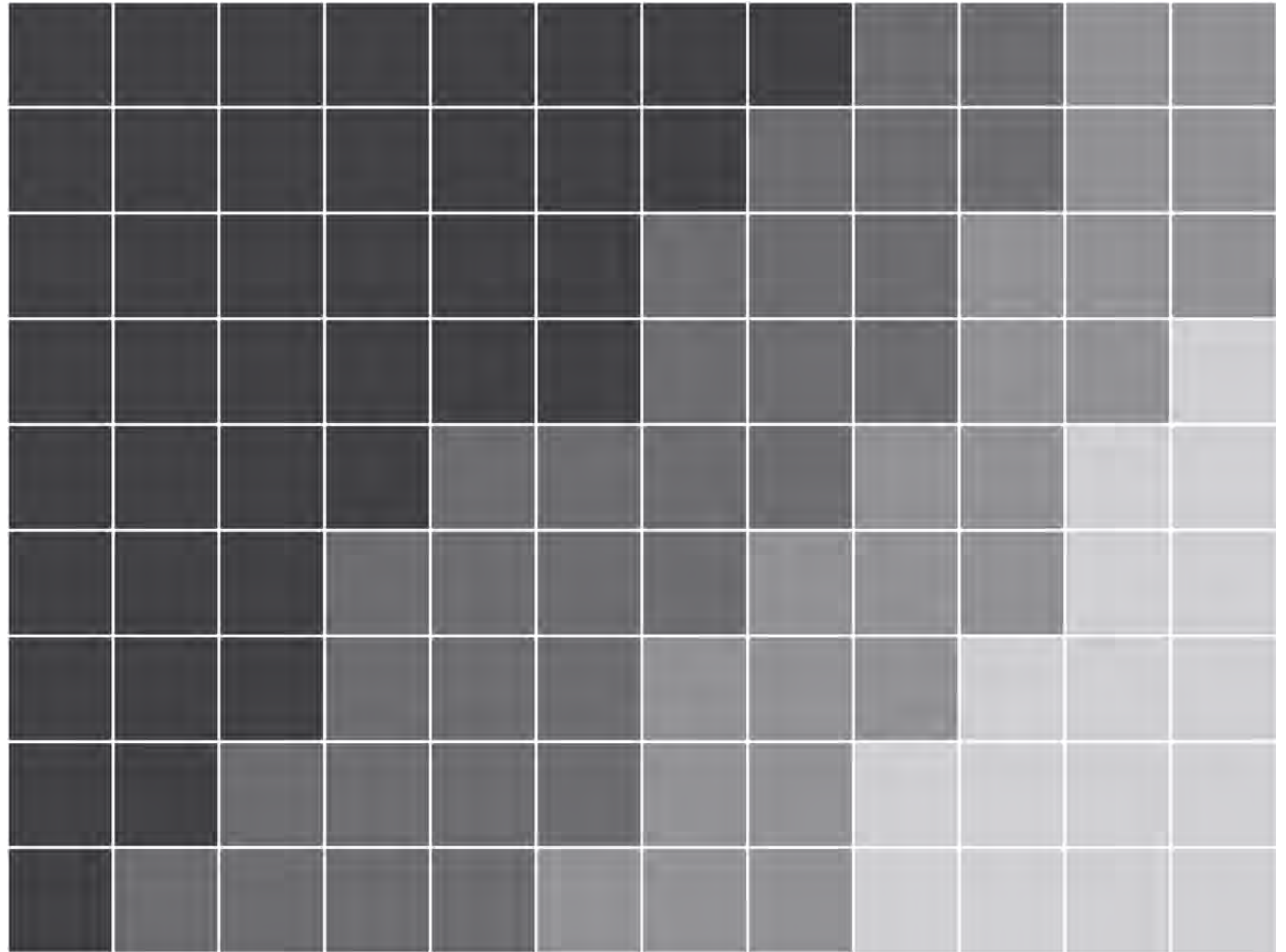
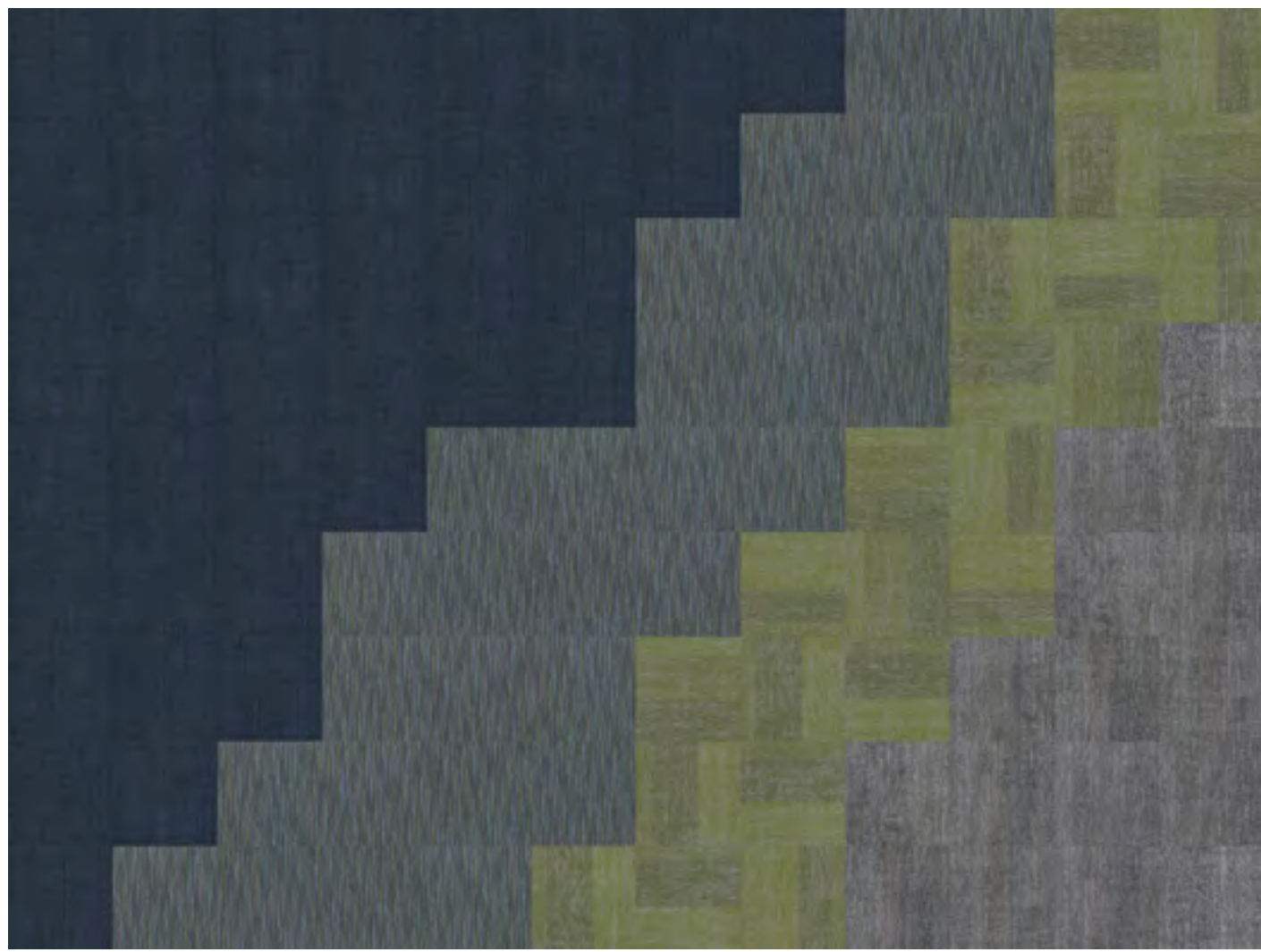
Installation 03



- Surround Carpet Tile (5T421) in Denim (17496)
- Correspond Carpet Tile (5T353) in Combo (52598)
- Arrange Carpet Tile (5T294) in Reflection (94323)
- Surround Carpet Tile (5T421) in Storm Cloud (17597)



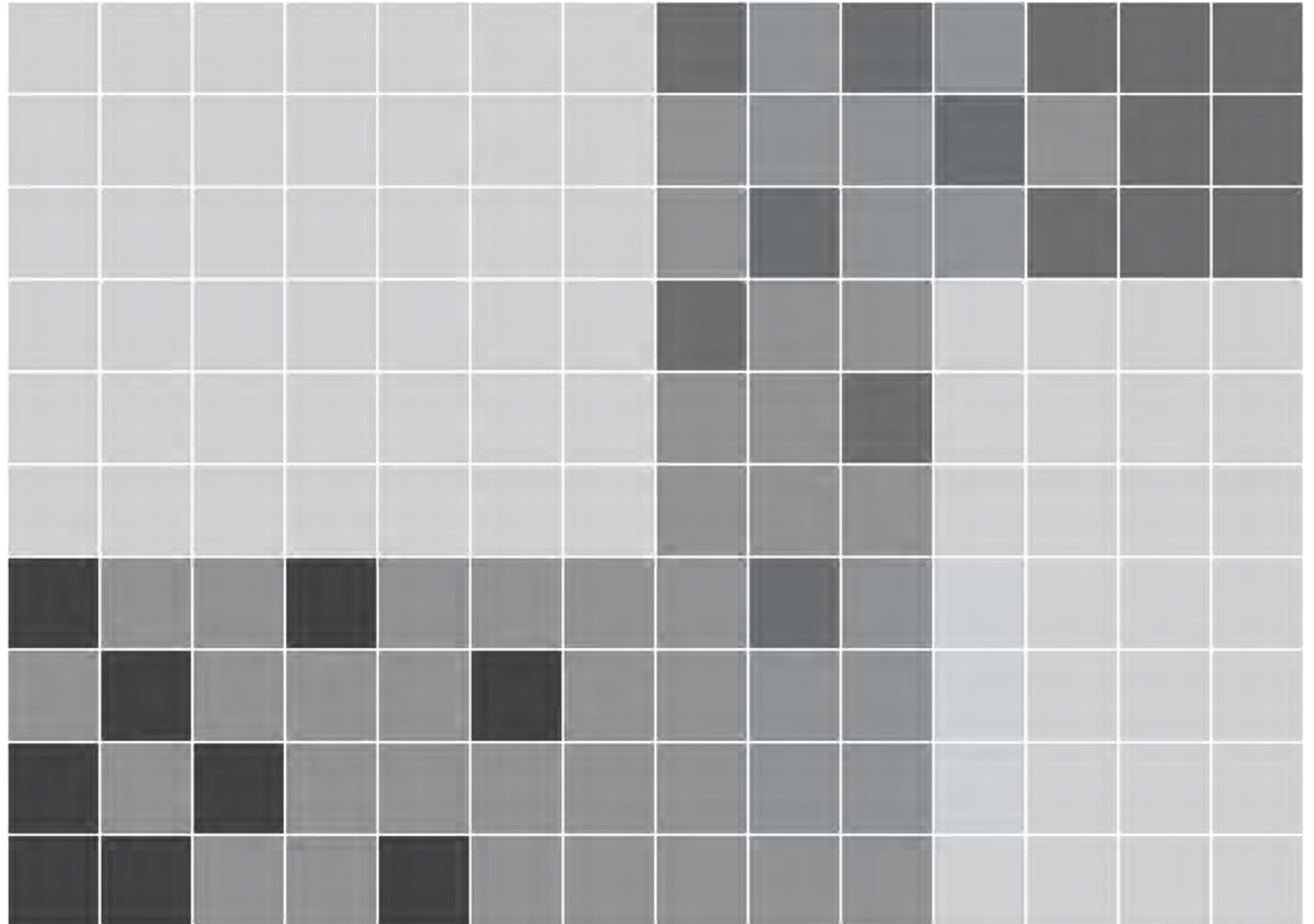
Installation 04



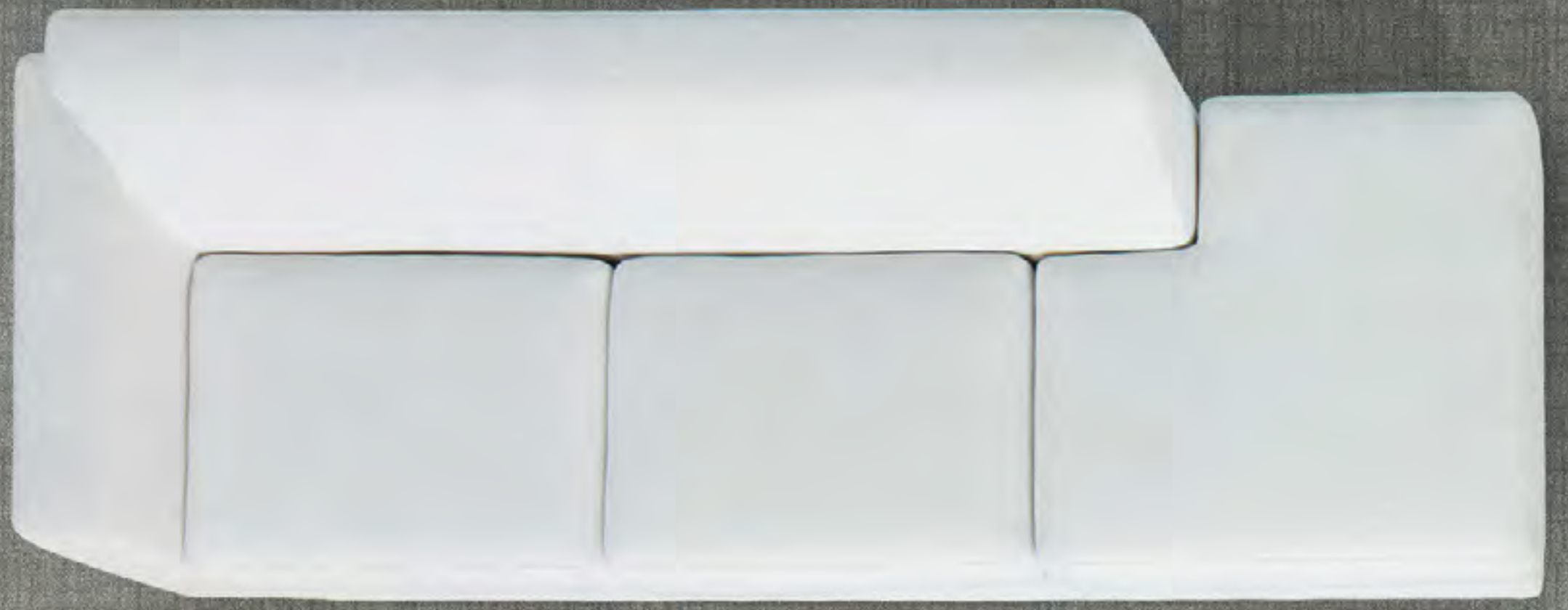
- Surround Carpet Tile (5T421) in Denim (17496)
- Partner Carpet Tile (5T354) in Together (52516)
- Arrange Carpet Tile (5T294) in Mountain View (94326)
- Arrange Carpet Tile (5T294) in Sterling Silver (94515)



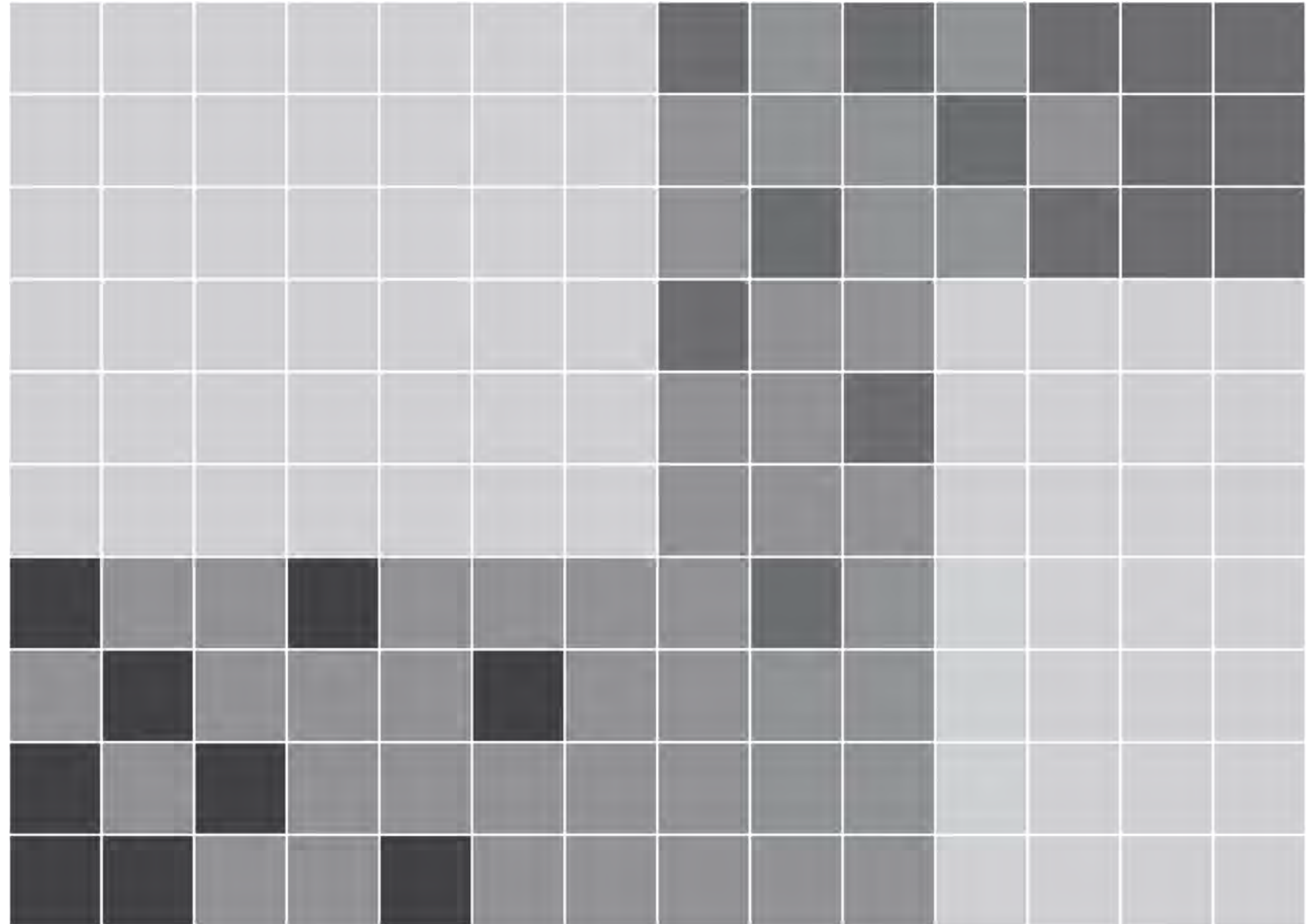
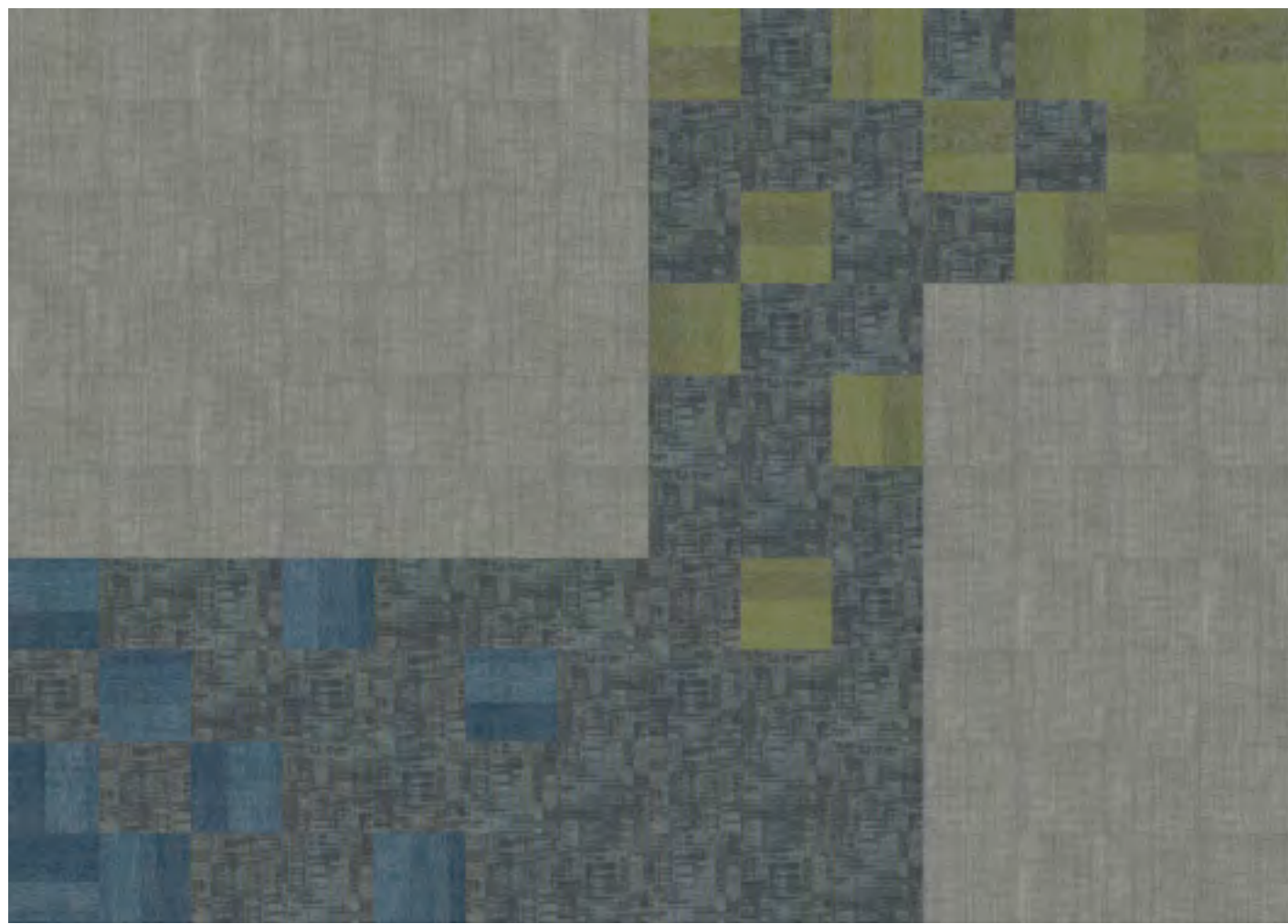
Installation 05



- Structure Carpet Tile (5T297) in Steel Grey (94530)
- Array Carpet Tile (5T295) in Shiny Pebble (94761)
- Array Carpet Tile (5T295) in Metallic Beige (94760)
- Surround Carpet Tile (5T421) in Limestone (17530)



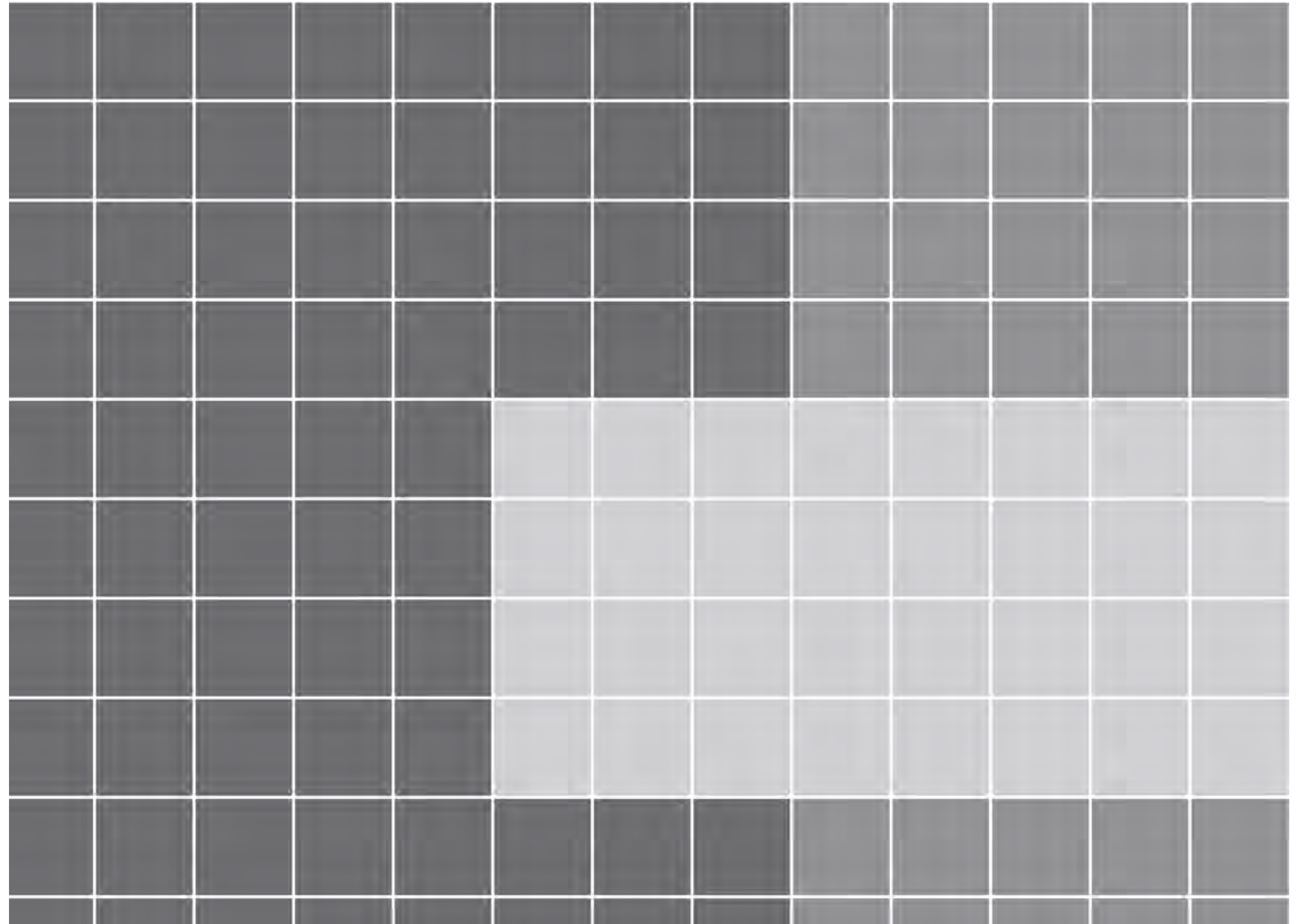
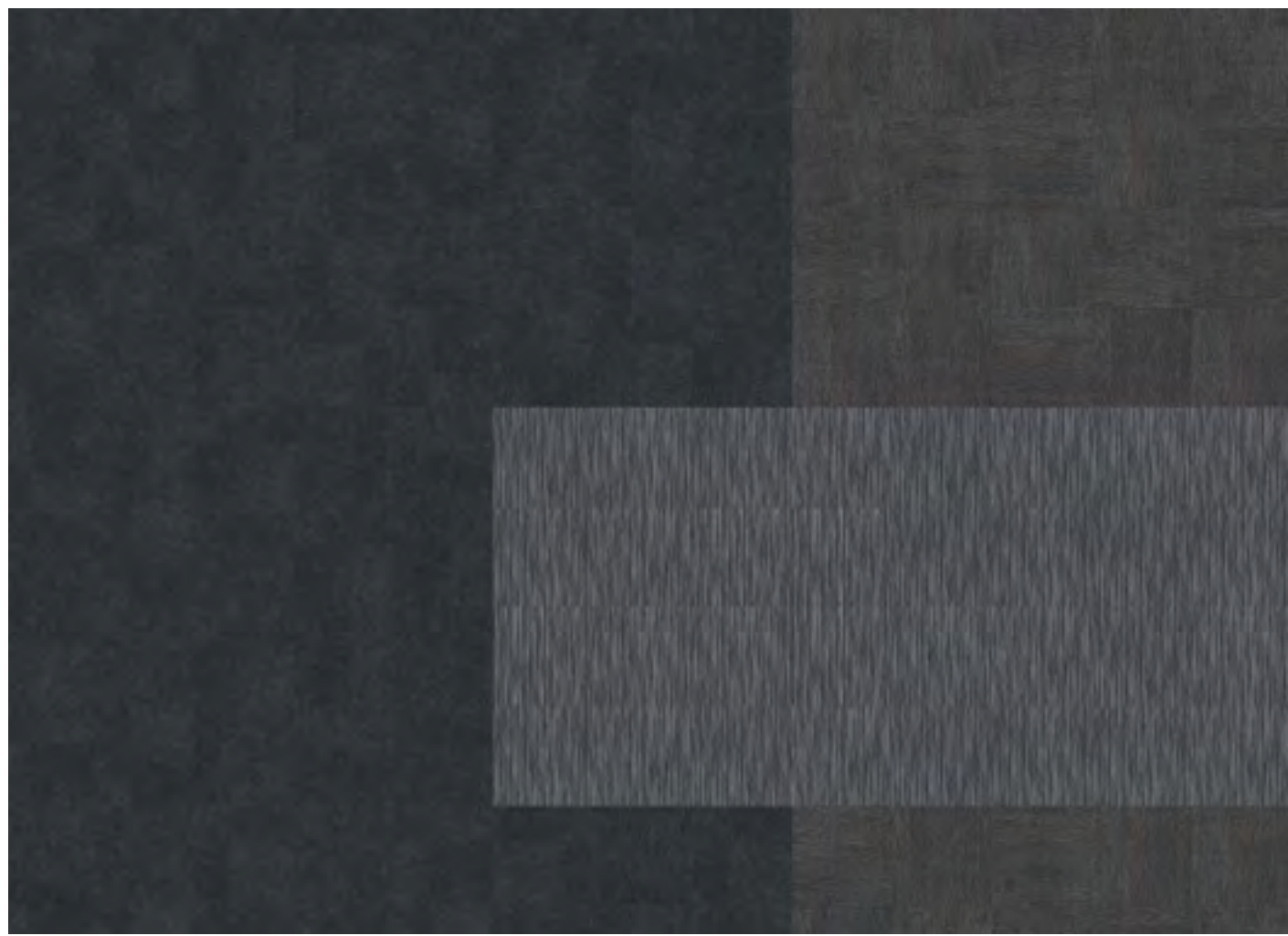
Installation 06



- Arrange Carpet Tile (5T294) in Reflection (94323)
- Arrange Carpet Tile (5T294) in Mountain View (94326)
- Correspond Carpet Tile (5T353) in Together (52516)
- Surround Carpet Tile (5T421) in Limestone (17530)



Installation 07



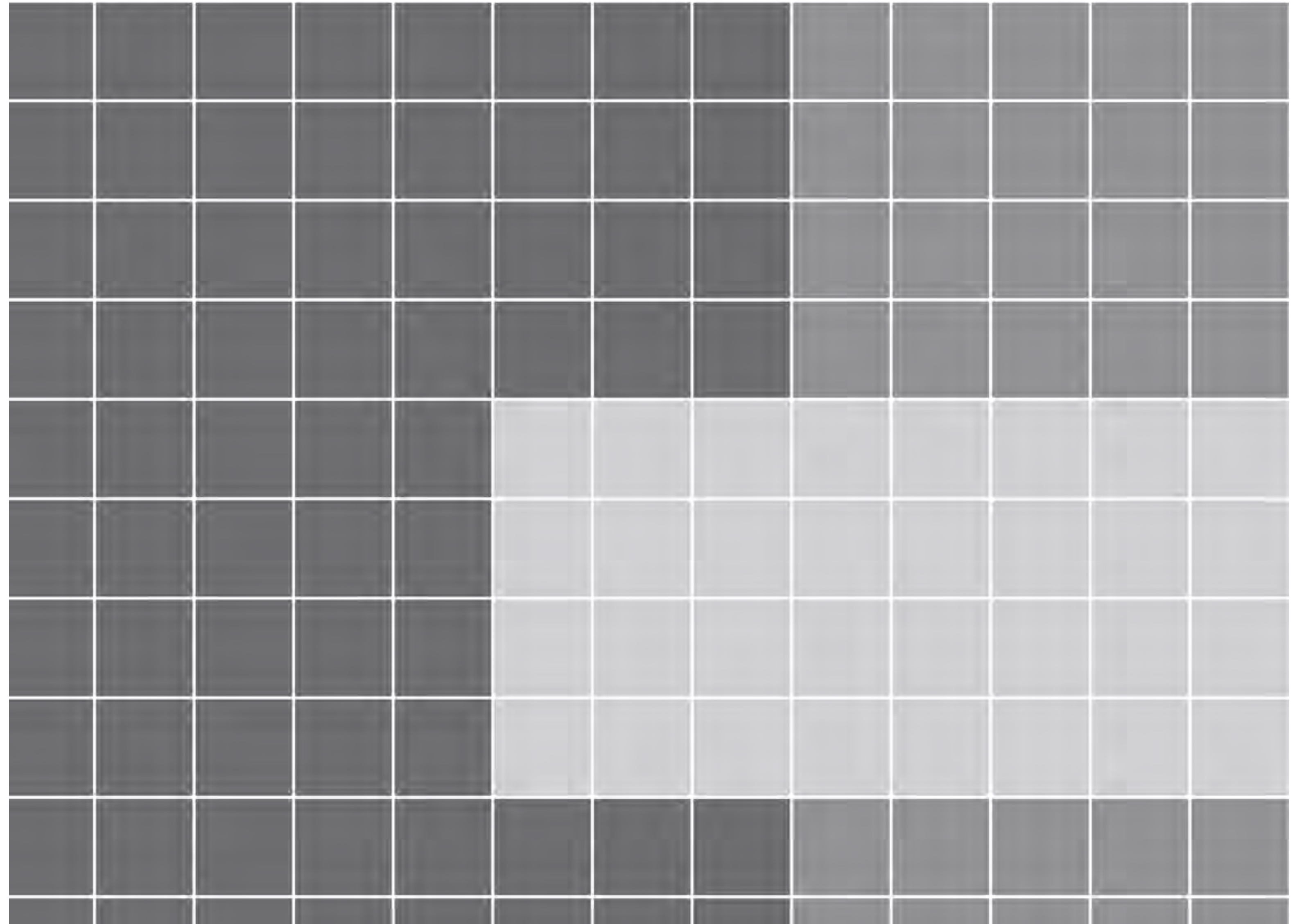
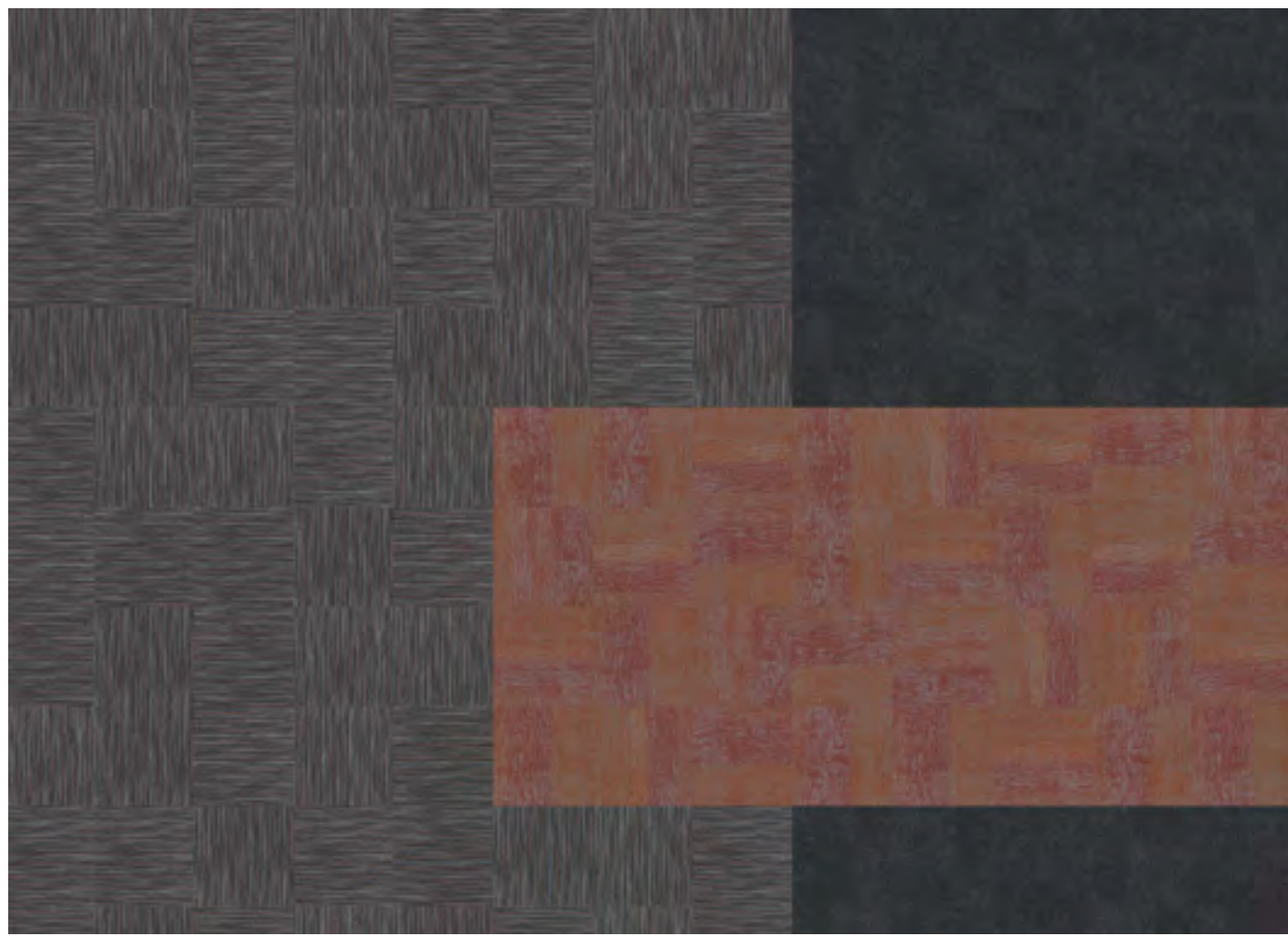
■ Poured Carpet Tile (5T420) in Granite (06500)

■ Arrange Carpet Tile (5T294) in Glossy Charcoal (94505)

■ Companion Carpet Tile (5T352) in Duo (52597)



Installation 08



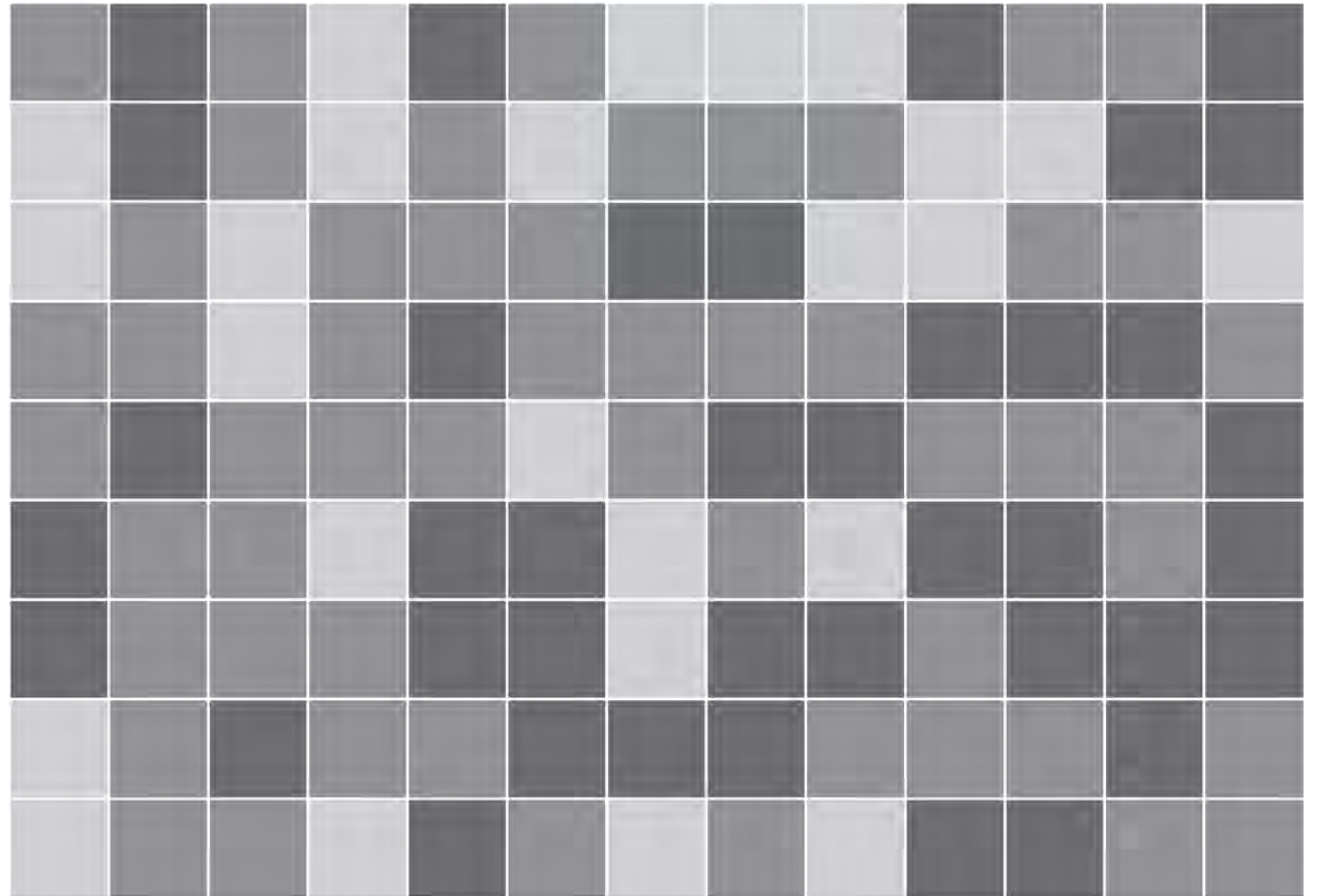
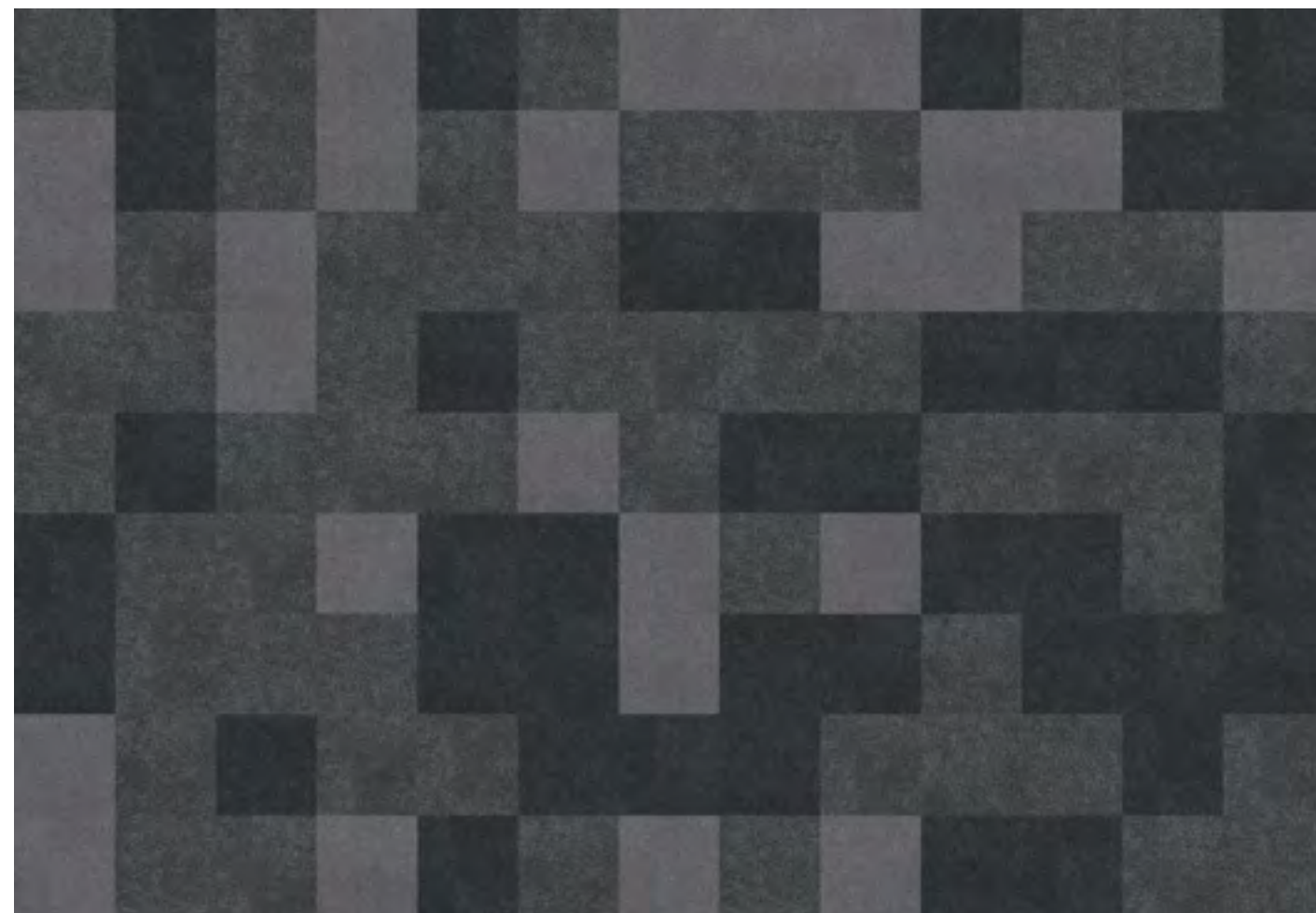
■ Companion Carpet Tile (5T352) in Connect (52531)

■ Poured Carpet Tile (5T420) in Granite (06500)

■ Arrange Carpet Tile (5T294) in Golden Gate (94668)



Installation 09



■ Poured Carpet Tile (5T420) in Granite (06500)

■ Poured Carpet Tile (5T420) in Aggregate (06501)

■ Poured Carpet Tile (5T420) in Mortar (06530)

SelectONE

A StrataWorx® Collection



Available up to 2,500 square yards within two weeks or less.

Specifications

	Surround StrataWorx		Diffuse StrataWorx		Poured StrataWorx	
	US Units	Metric Units	US Units	Metric Units	US Units	Metric Units
Style Name	Surround StrataWorx		Diffuse StrataWorx		Poured StrataWorx	
Style Number	5T421		5T419		5T420	
Construction	Multi-level Pattern Loop		Multi-level Pattern Loop		Multi-level Pattern Loop	
Fiber	Eco Solution Q® Nylon		Eco Solution Q® Nylon		Eco Solution Q® Nylon	
Dye Method	100% Solution Dyed		100% Solution Dyed		100% Solution Dyed	
Tufted Weight	15.0 oz/yd ²	508.6 g/m ²	16.0 oz/yd ²	542.5 g/m ²	16.0 oz/yd ²	542.5 g/m ²
Gauge	1/12	47.2 per 10 cm	1/12	47.2 per 10 cm	1/12	47.2 per 10 cm
Stitches per Inch	9.0	36.5 per 10 cm	8.5	34 per 10 cm	8.5	33 per 10 cm
Finished Pile Thickness	0.084 in	2.13 mm	0.092 in	2.34 mm	0.078 in	1.98 mm
Average Density	6,429 oz/yd ³	0.238 g/cm ³	6,261 oz/yd ³	0.232 g/cm ³	7,385 oz/yd ³	0.273 g/cm ³
Kilotex		9.27		9.23		9.34
Product Size	24 in × 24 in	61 cm × 61 cm	24 in × 24 in	61 cm × 61 cm	24 in × 24 in	61 cm × 61 cm
Secondary Backing	Strataworx® Tile		Strataworx® Tile		Strataworx® Tile	
Protective Treatments	SSP® Shaw Soil Protection		SSP® Shaw Soil Protection		SSP® Shaw Soil Protection	
Radiant Panel	(ASTM E 648) Class I		(ASTM E 648) Class I		(ASTM E 648) Class I	
NBS Smoke	(ASTM E 662) < 450		(ASTM E 662) < 450		(ASTM E 662) < 450	
Electrostatic Propensity	Less Than 3.5 kV, Built-in		Less Than 3.5 kV, Built-in		Less Than 3.5 kV, Built-in	
	Permanent Conductive Fiber		Permanent Conductive Fiber		Permanent Conductive Fiber	
Cradle to Cradle Certified™	Silver Level (Version 3.1)		Silver Level (Version 3.1)		Silver Level (Version 3.1)	
Warranty*	10 Year Commercial Limited		10 Year Commercial Limited		10 Year Commercial Limited	

Coordinating LVT

	Cast 2.5 mm		Terrain II 20 mil		Compound 2.5 mm	
	US Units	Metric Units	US Units	Metric Units	US Units	Metric Units
Style Name	Cast 2.5 mm		Terrain II 20 mil		Compound 2.5 mm	
Style Number	4097V		0454V		4074V	
Construction	Heavy Commercial Luxury Vinyl		Heavy Commercial Luxury Vinyl		Heavy Commercial Luxury Vinyl	
Finish	ExoGuard+™		ExoGuard+™		ExoGuard+™	
Nominal Dimensions	24 in × 24 in	61 cm × 61 cm	6 in × 48 in	15 cm × 122 cm	24 in × 24 in	61 cm × 61 cm
Wear Layer Thickness	0.02 in	20 mil (0.5 mm)	0.02 in	20 mil (0.5 mm)	0.02 in	20 mil (0.5 mm)
Overall Thickness	0.098 in	2.5 mm	0.098 in	2.5 mm	0.098 in	2.5 mm
Warranty*	15 Year Commercial Limited		15 Year Commercial Limited		15 Year Commercial Limited	

*For detailed warranty and the most accurate information on recycled content visit shawcontract.com.

BELOW: **POURED (CARPET TILE 5T420)** IN RIVER ROCK (06481) | INSTALLED MONOLITHIC
AND COMPOUND (LVT 4074V) IN THRESHOLD (77515) | INSTALLED BRICK



ShawContract®