

# Unite II Installation Ideas



Installation 01



Installation 02



Installation 03



Installation 04



Installation 05



Installation 06



Installation 07



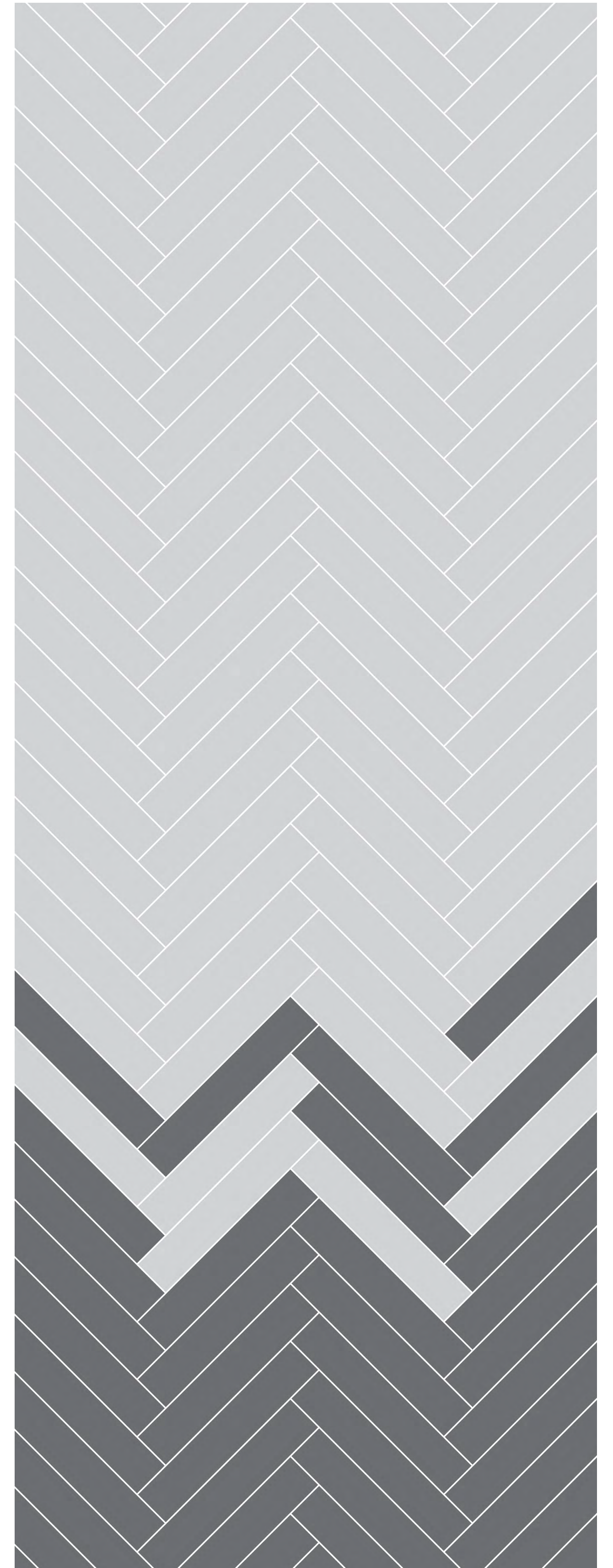
# Unite II Installation Keys

# Installation 01



■ Commingle LVT (4350V) in Iron (50505)

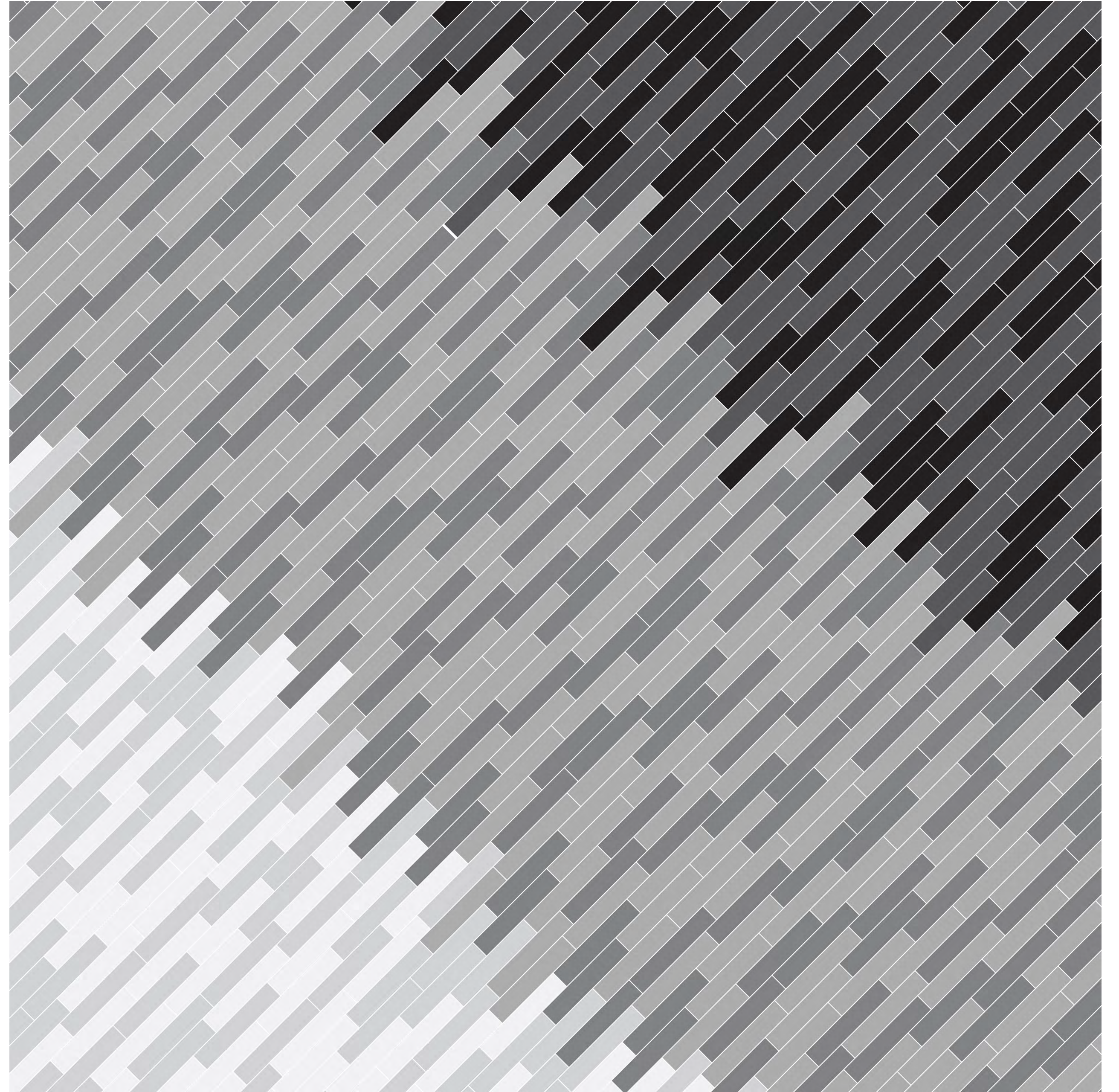
■ Inlet II LVT (4372V) in Thatch (72720)



# Installation 02



- Union LVT (4349V) in Concrete Refuge (49155)
- Inlet II LVT (4372V) in Refuge (72155)
- Union LVT (4349V) in Concrete Horizon (49515)
- Inlet II LVT (4372V) in Horizon (72515)
- Union LVT (4349V) in Slate Canyon (49114)
- Inlet II LVT (4372V) in Canyon (72114)

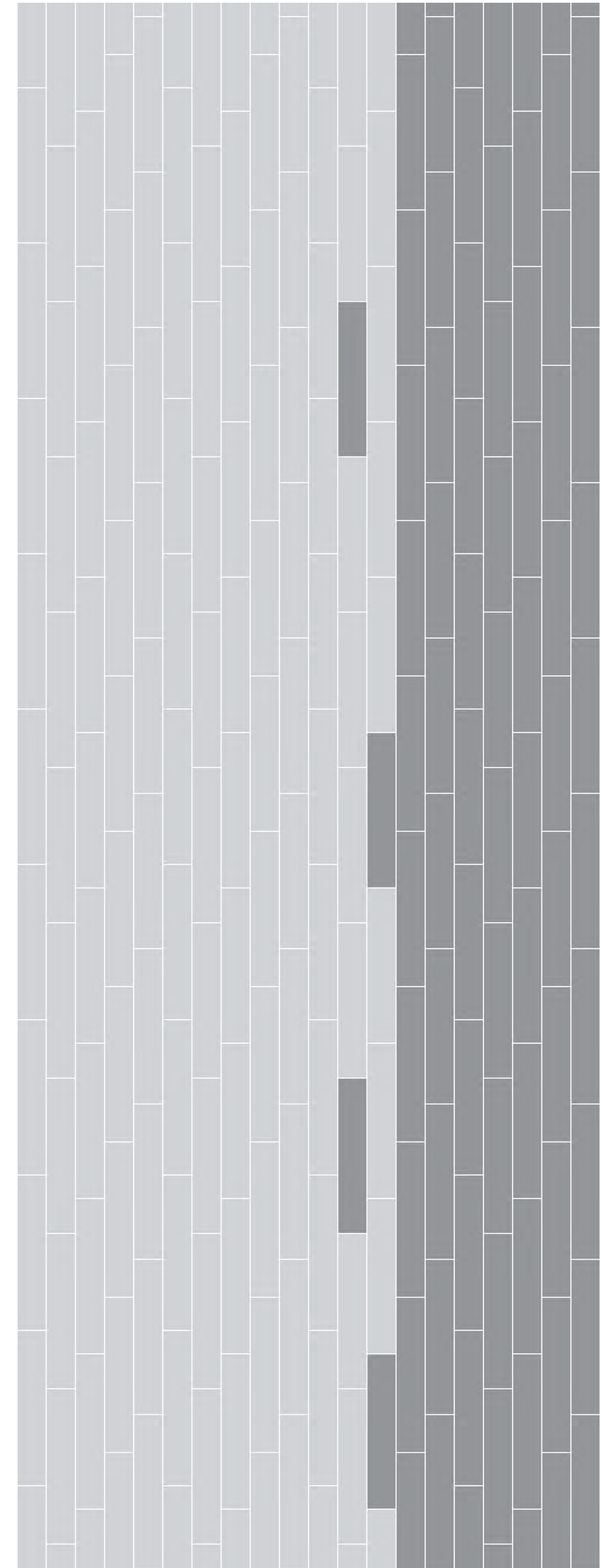


# Installation 03

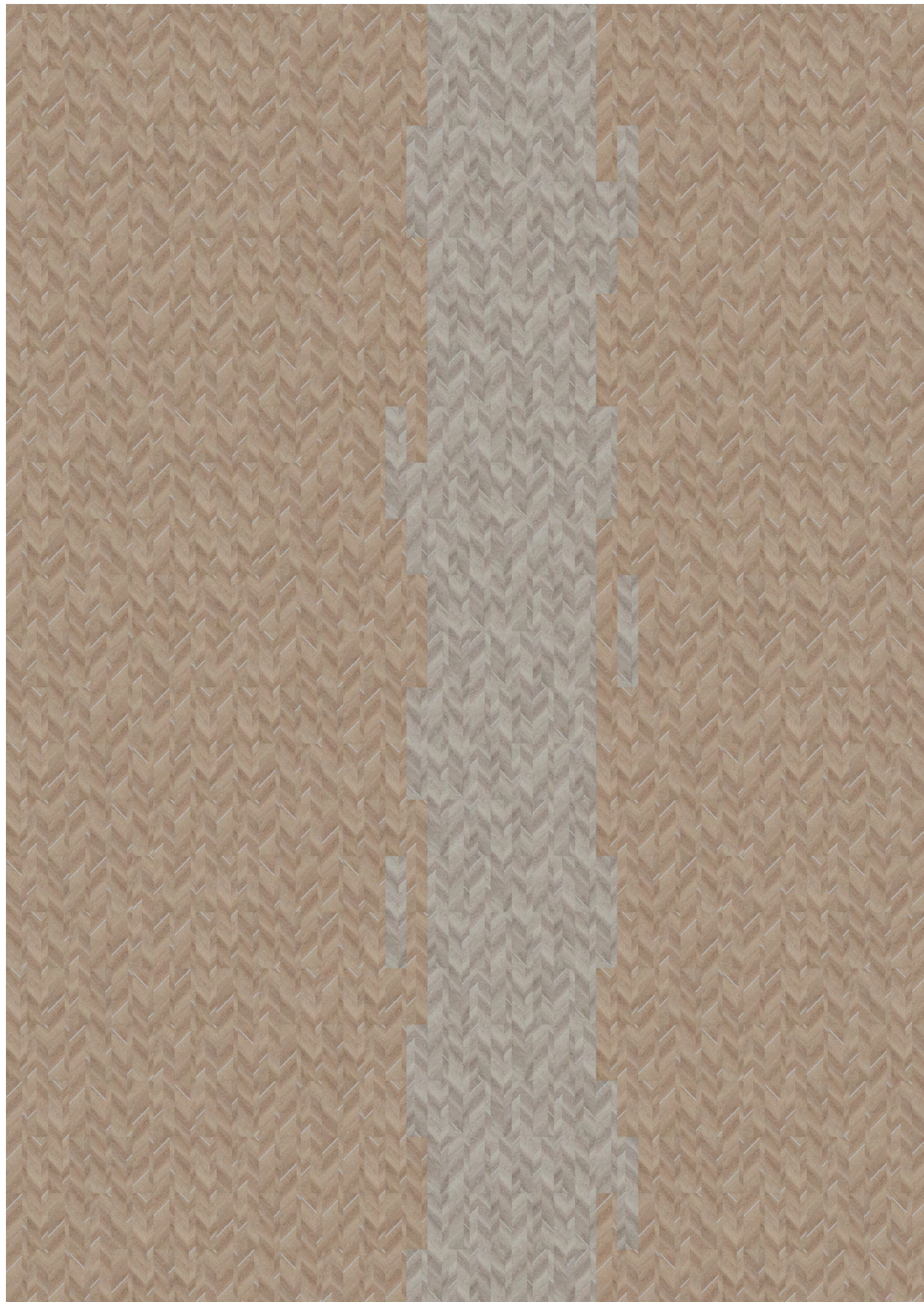


■ Commingle LVT (4350V) in Concrete (50105)

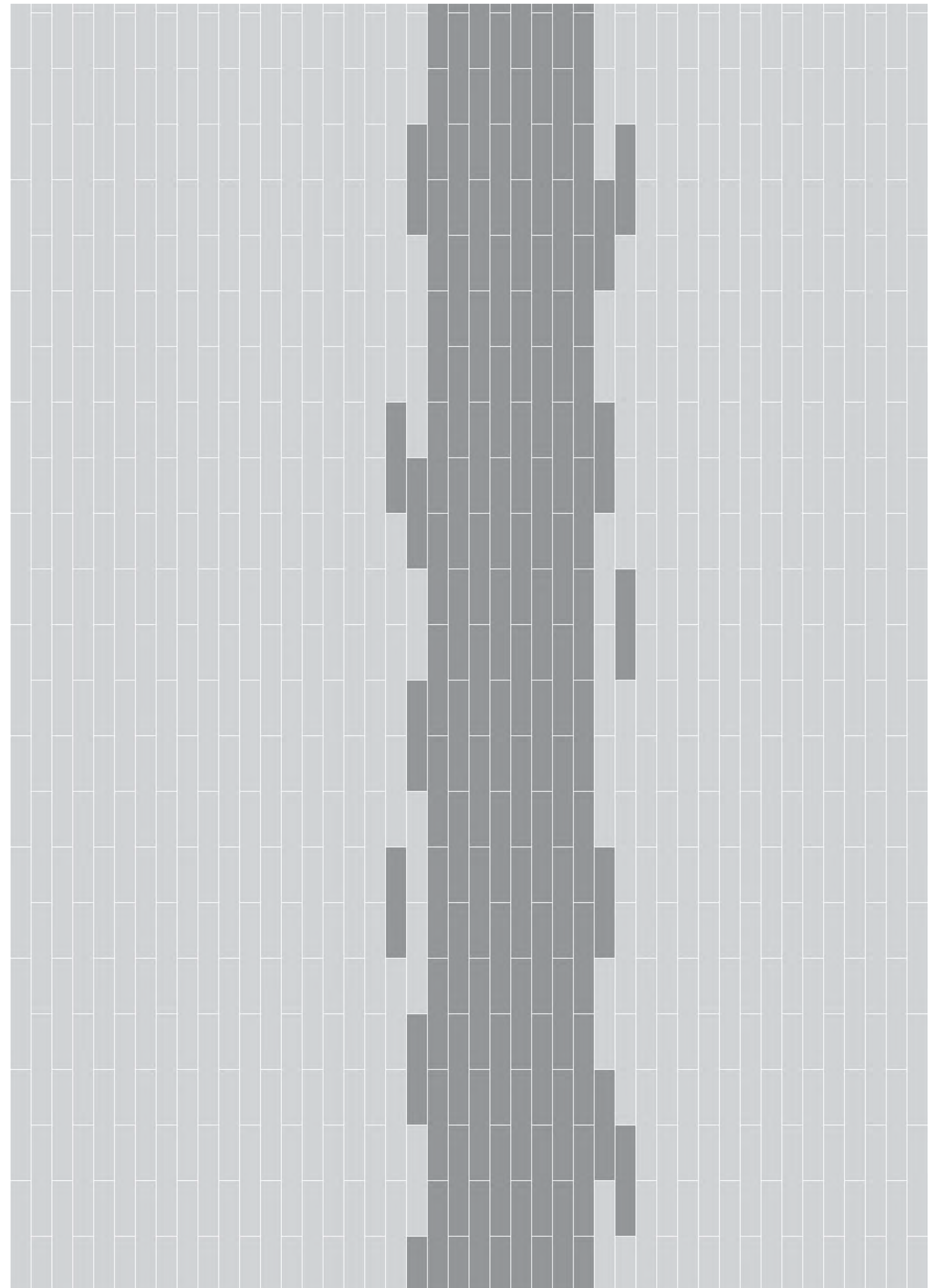
■ Union LVT (4349V) in Concrete Path (49121)



# Installation 04



- Union LVT (4349V) in Concrete Refuge (49155)
- Union LVT (4349V) in Concrete Valley (49103)

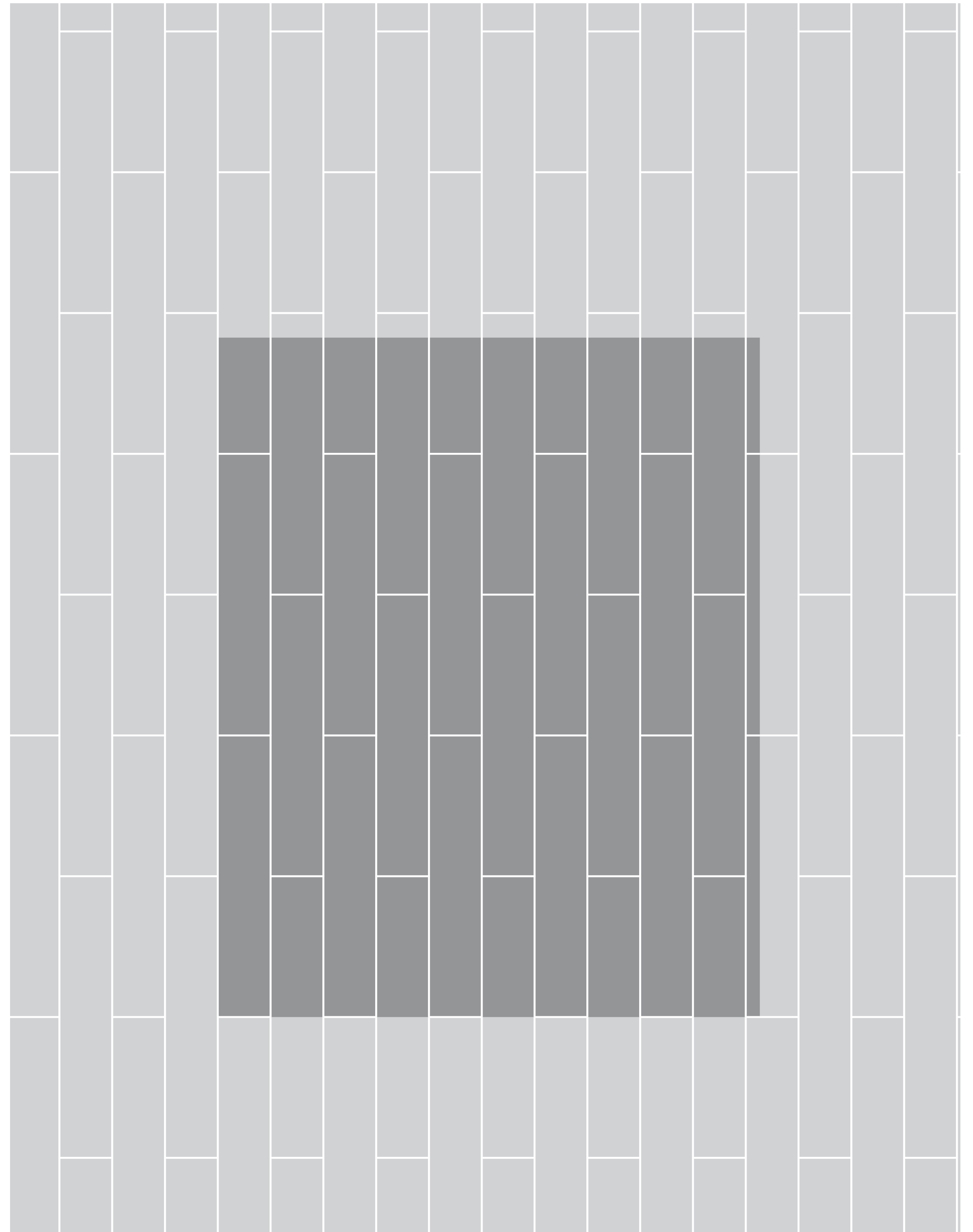


# Installation 05

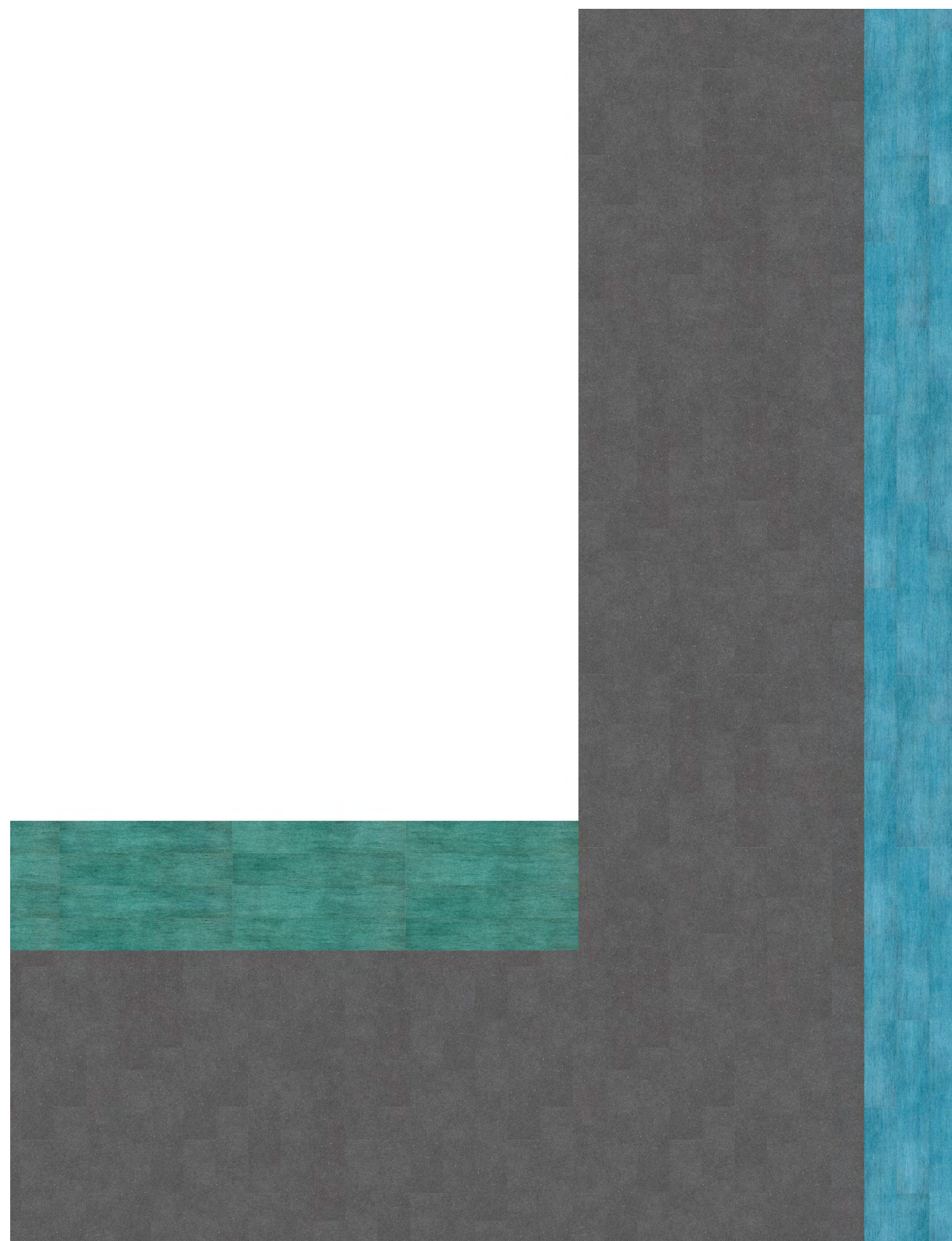


■ Commingle LVT (4350V) in Slate (50518)

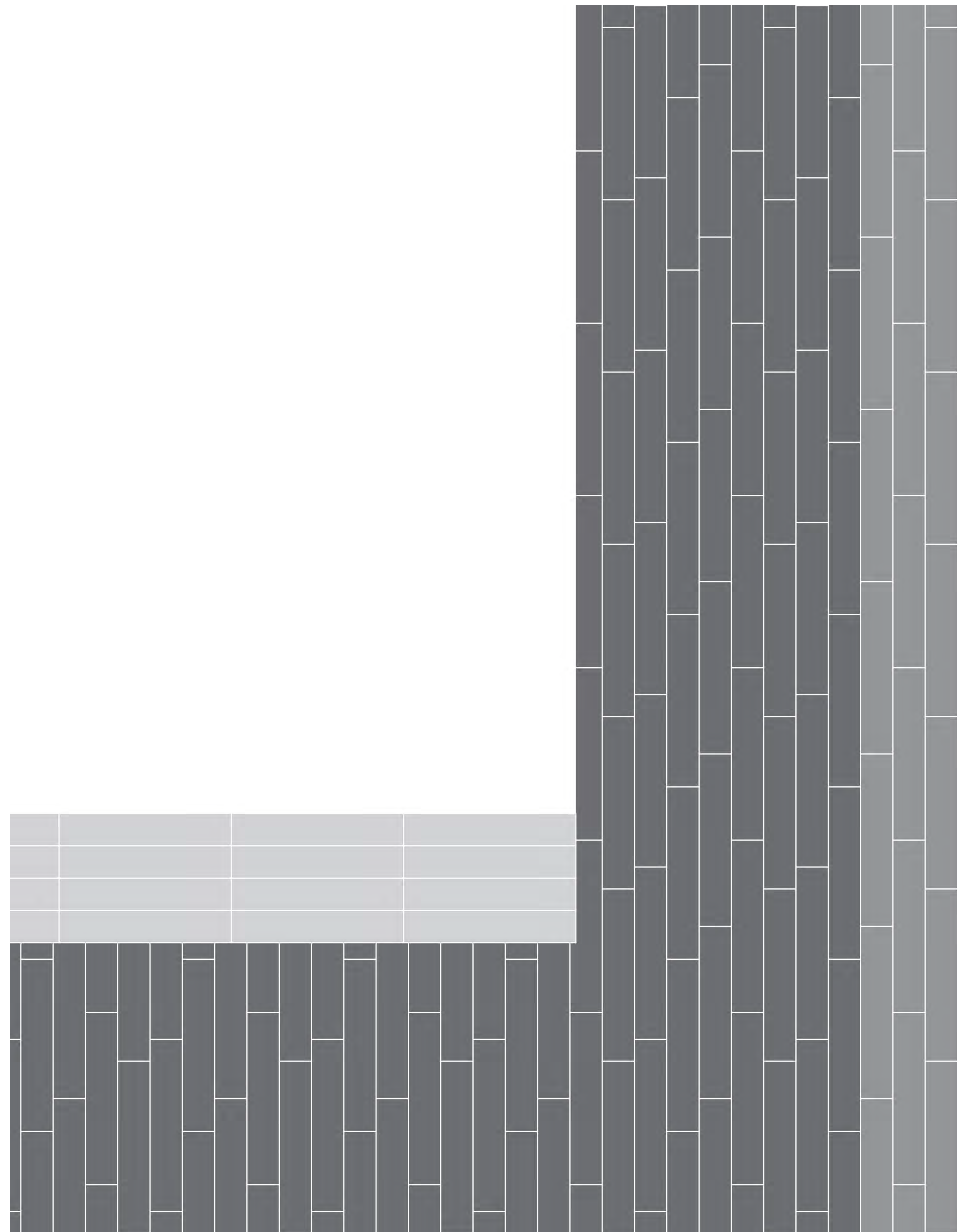
■ Union LVT (4349V) in Slate Canyon (49114)



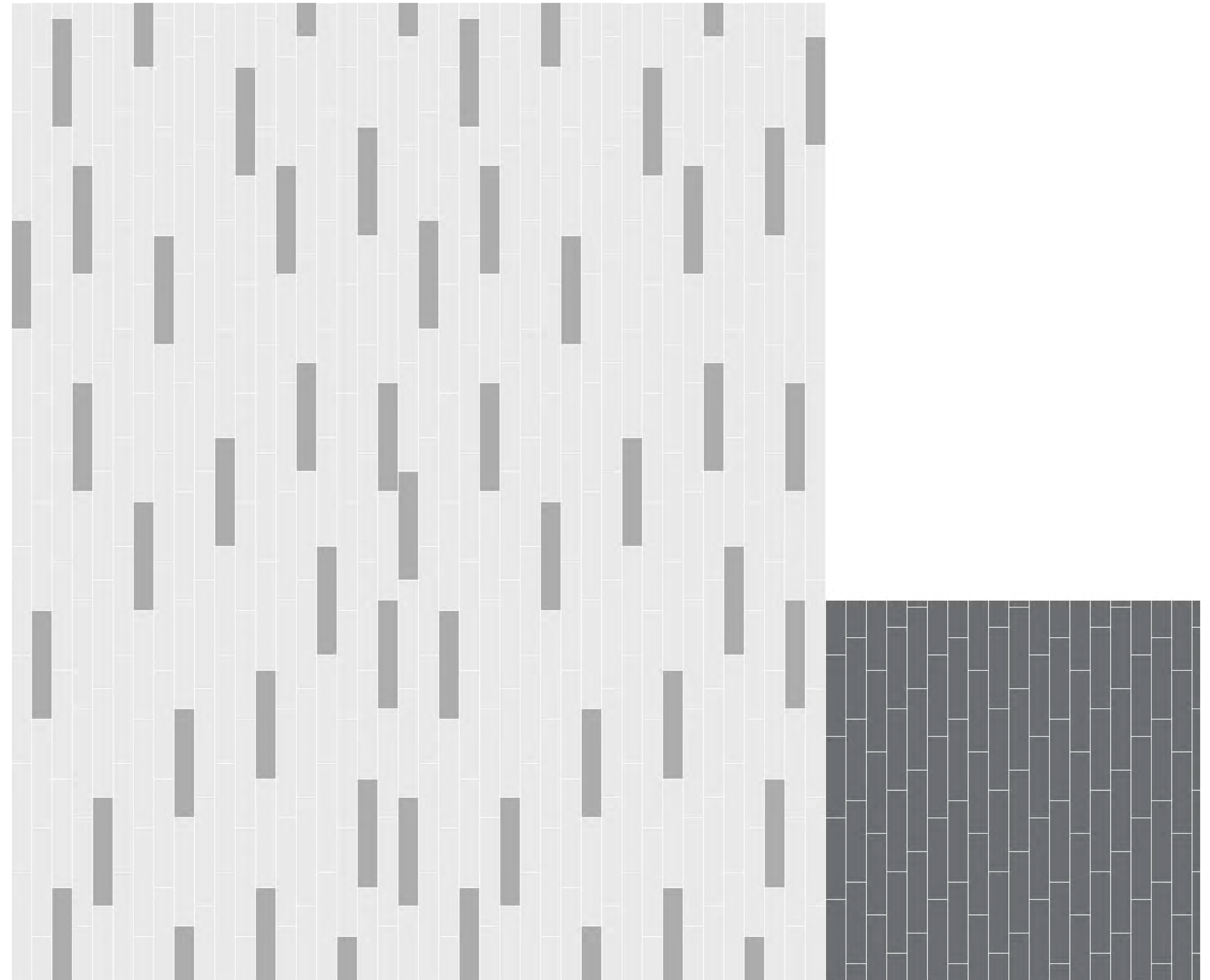
# Installation 06



- Commingle LVT (4350V) in Iron (50505)
- Cove LVT (0927V) in Wash (27436)
- Cove LVT (0927V) in Jade (27405)



# Installation 07



Collective I Carpet Tile (5T438) in Taupe (38761)

Union LVT (4349V) in Sandy Dune (49240)

Inlet II LVT (4372V) in Dune (72240)