

FLOORING STANDARDS

# Echo Suites by Wyndham

ACCOUNT MANAGER

**Jonathan Goodelman**

[jonathan.goodelman@gmansales.com](mailto:jonathan.goodelman@gmansales.com)

732.485.0775

CUSTOMER SERVICE

**Courtnei Cartwright**

[courtnei.cartwright@shawinc.com](mailto:courtnei.cartwright@shawinc.com)

706.217.3454

VP STRATEGIC ACCOUNTS

**Desiree Perkins**

[desiree.perkins@shawcontract.com](mailto:desiree.perkins@shawcontract.com)

404.452.3055



**ShawContract**<sup>®</sup>  
hospitality



## Our Sustainability Story

Everyone should have access to sustainable products for the places where we heal, learn, rest and work. Our brand vision, Smarter Impact, is our call to action to share insights and solutions that help you act on your power for positive change, especially when it comes to making sustainable choices.

Our view of sustainability encompasses not only the environmental health of our products and our operations, but also how our products impact human experience. For more than 20 years, Shaw Contract Hospitality has demonstrated our commitment to the Cradle to Cradle® design philosophy and the Cradle to Cradle Certified™ Products Program. More than 90% of the products we manufacture have achieved this prestigious multi-attribute certification, protecting humans and the environment.



Declare.

EPD®



## Attributes

- Guest comfort and experience
- High-traffic durability
- Housekeeping support and cleanliness
- Improved acoustics
- Reduced renovation downtime
- Welcoming, customized design

## Why Shaw Contract Hospitality?

- By selecting materials that are sustainably sourced, long-lasting and free of harmful chemicals, hotels can assure guests that their values matter. Shaw Contract Hospitality offers a portfolio of products that satisfy the most stringent sustainability certifications.
- An entire team dedicated to customizing your hospitality project, including design services, visualization, estimating, and install seaming diagrams
- Single point of contact for order entry/monitoring, shipment tracking and expediting, technical services, risk mitigation and problem resolution
- Tailored stocking program based on your forecasting to ensure availability of your standard products and rapid service/reduced lead times

## Product Breadth

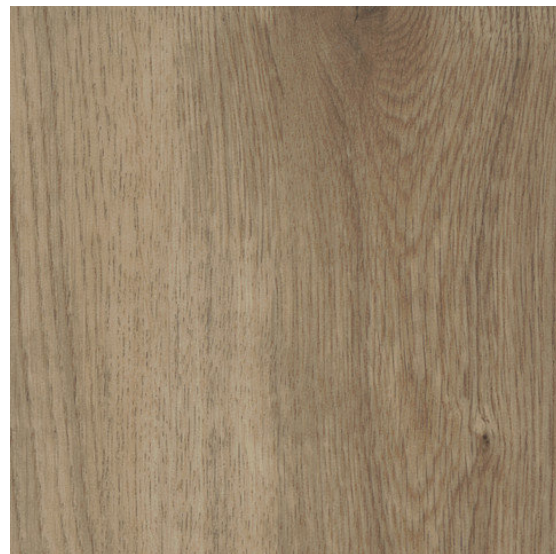
- Area Rugs
- Broadloom
- Carpet Tile
- Hardwood
- LVT
- Sheet
- Bio-based Resilient
- COREtec® Resilient
- Accessories





### Guestroom LVT | LVT-1

<b>Style</b>	BS869
<b>Color</b>	90250
<b>Construction</b>	Multilayer SPC with Attached Cork Underlayment
<b>Wear Layer Thickness</b>	20 mil   0.02 in   0.51 mm
<b>Overall Thickness</b>	0.197 in   5 mm
<b>Nominal Dimensions</b>	7 in x 48 in   18 cm x 122 cm
<b>Actual Dimensions</b>	7.20 in x 48.03 in   18.29 cm x 122 cm
<b>Installation</b>	Floating (Direct Glue in Bathrooms*)
<b>Approved Install Method</b>	Stagger
<b>Area Per Box</b>	28.84 sq ft   12 pcs per box
<b>Warranty</b>	15 Year Commercial Limited



For sample, order BS869 color 90250.

\* Must Use MS Resilient Adhesive in Bathrooms.



### Lobby LVT | LVT-1

<b>Style</b>	BS752
<b>Color</b>	00775
<b>Construction</b>	Commercial Luxury Vinyl Plank
<b>Wear Layer Thickness</b>	20 mil   0.02 in   0.508 mm
<b>Overall Thickness</b>	0.098 in   2.5 mm
<b>Nominal Dimensions</b>	6 in x 48 in   15 cm x 122 cm
<b>Actual Dimensions</b>	5.96 in x 48 in   15.1 cm x 121.9 cm
<b>Installation</b>	Direct Glue
<b>Approved Install Method</b>	Brick
<b>Area Per Box</b>	41.72 sq ft   21 pcs per box
<b>Warranty</b>	15 Year Commercial Limited



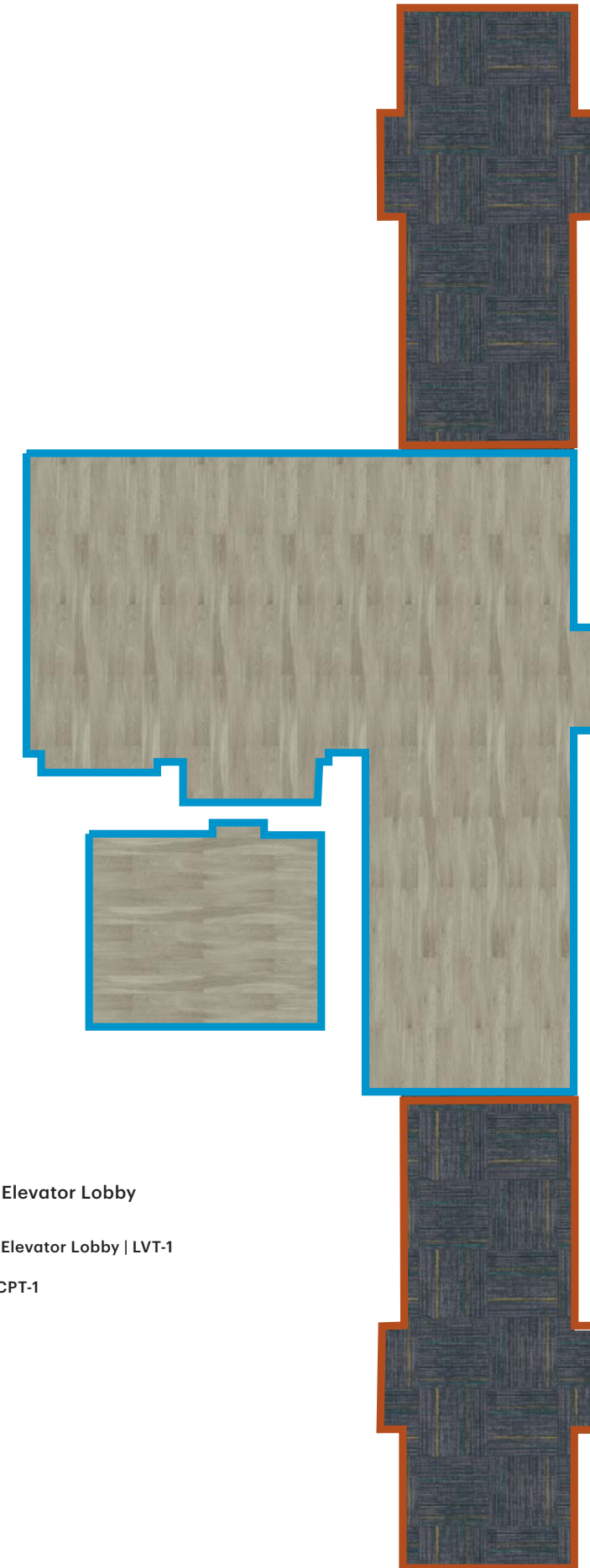
For sample, order BS752 color 00775.



### Corridor Carpet Tile | CPT-1

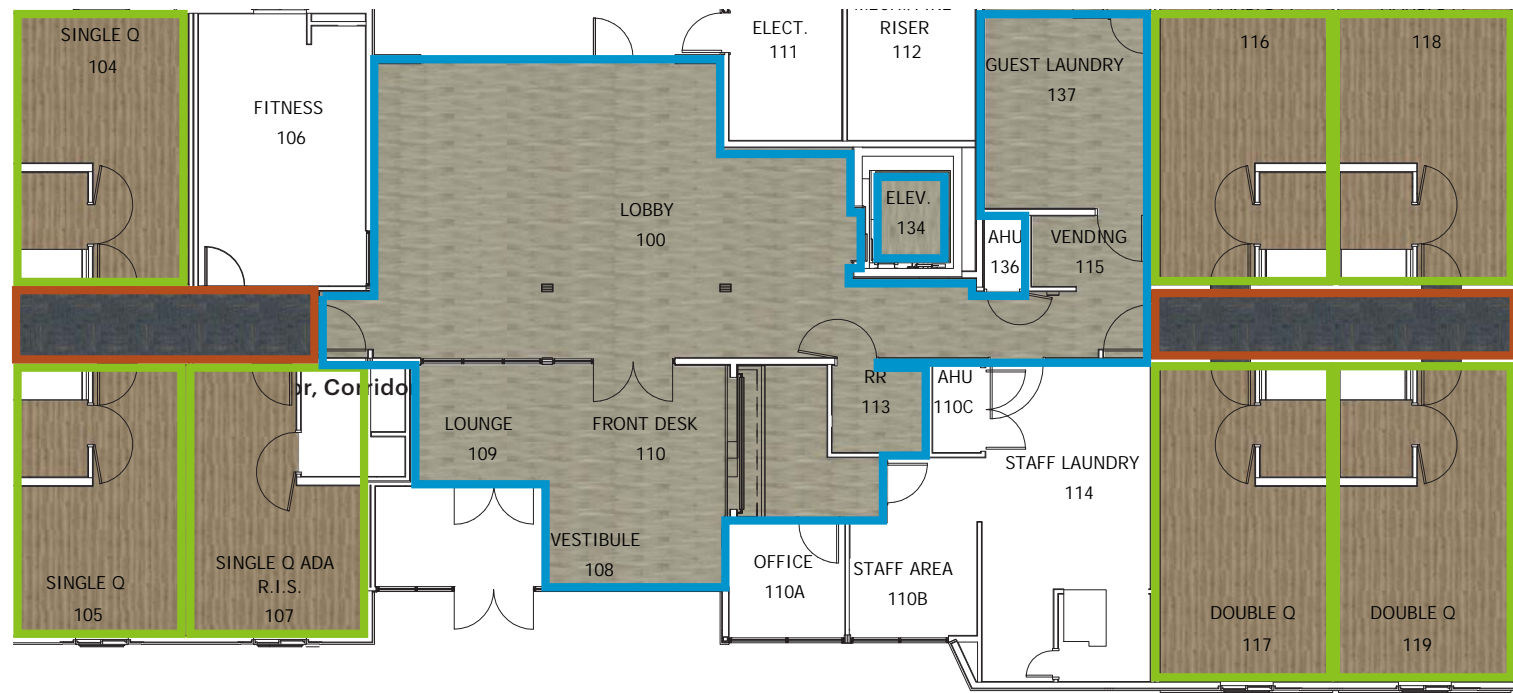
<b>Style</b>	BS745
<b>Color</b>	00410
<b>Product Type</b>	Carpet Tile
<b>Fiber</b>	Solution Q® Nylon
<b>Dye Method</b>	100% Solution Dyed
<b>Construction</b>	Multi-Level Pattern Loop
<b>Tufted Weight</b>	16 oz/yd²   542.49 g/m²
<b>Gauge</b>	1/10 in   39.37 per 10 cm
<b>Stitches</b>	11 per in   42.65 per 10 cm
<b>Size</b>	24 in x 24 in   60.96 cm x 60.96 cm
<b>Backing</b>	Ecologix® Tile
<b>Installation</b>	Direct Glue
<b>Installation Method</b>	Quarter Turn
<b>Warranty</b>	15 Year Commercial Limited

For sample, order BS745 color 00410.



#### Corridor and Elevator Lobby

- Elevator & Elevator Lobby | LVT-1
- Corridor | CPT-1



- Lobby | LVT-1
- Guestroom | LVT-1
- Corridor | CPT-1



- Elevator Lobby | LVT-1
- Guestroom | LVT-1
- Corridor | CPT-1



