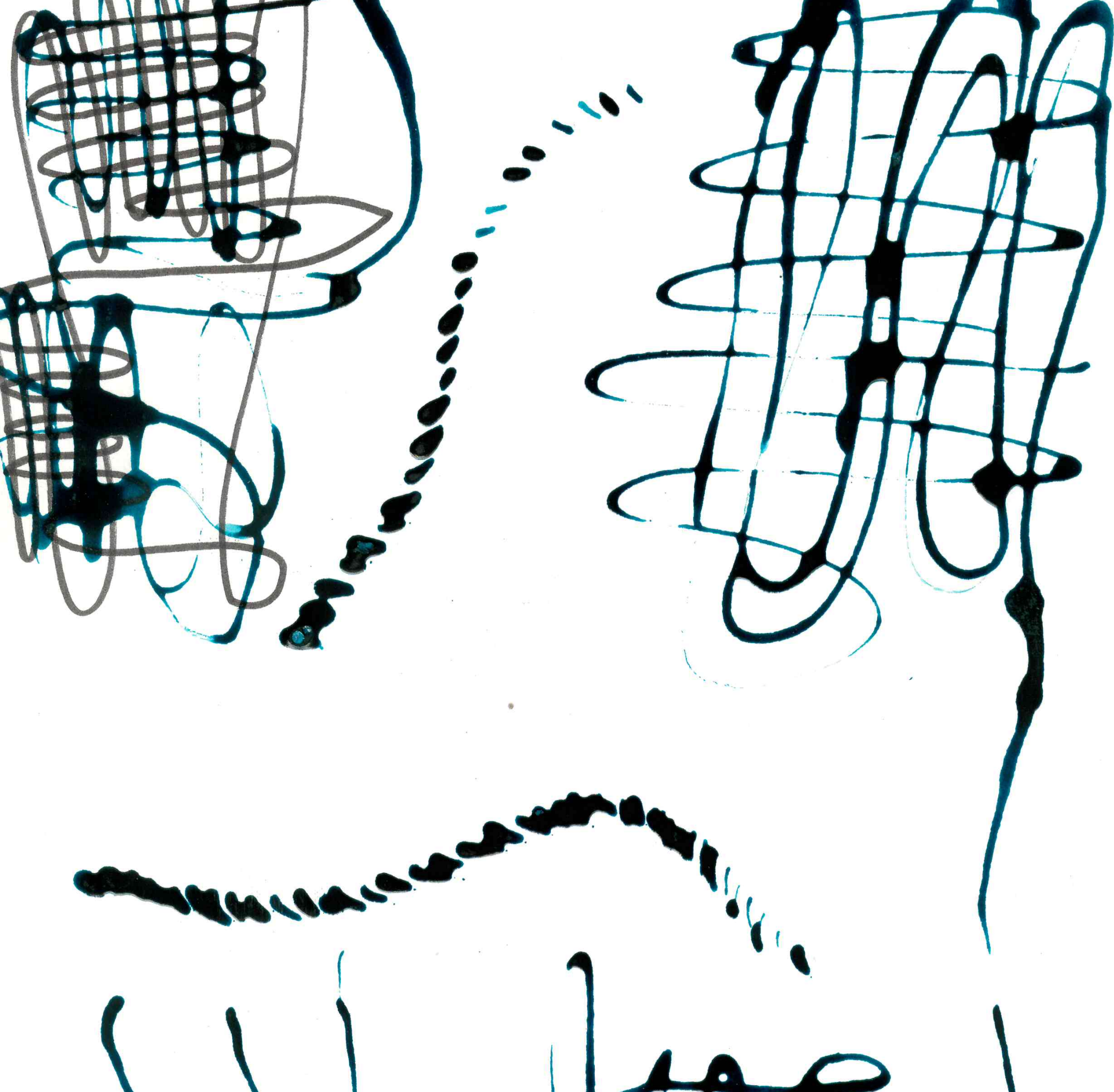


Connected Threads



ShawContract[®]
hospitality





Every Stitch has a Story to Tell

Connected Threads celebrates the human spirit, our ability to connect and create, to inspire and be inspired. It pays tribute to the rich, enduring heritage of textile crafts. The art and skill embedded in generations of sewing, quilting, knitting, and mending. Every stitch and loop adds to our understanding of the threads that bind us. The *Connected Threads* collection weaves together the care, comfort, and creativity passed down through generations and across cultures, giving a contemporary new expression for today's hospitality environment.



Crafted for Excellence

Connected Threads showcases a large variety of fully customizable broadloom and carpet tile patterns that will work in harmony across hospitality spaces. With plush cut and loop construction, it lays the perfect foundation for a comfortable guest room experience or welcoming public space.

This collection lays the groundwork for hotel environments that foster a sense of connection, creativity, and comfort. A feeling of harmony is embedded in a color palette designed to reflect the well-being we feel when we connect with each other and our surroundings. This custom collection delivers a meticulous fusion of traditional craftsmanship and forward-thinking sophistication.

Thread by Thread

For this collection, our designers experimented with patchwork, knitting, darning, and embroidery, then let the processes inspire their pencils and paints. They focused on adding new layers of depth and character to timeless techniques, making connections as new patterns emerged.

Explore our Connected Threads patterns, grouped by inspiration and process explored: **Delicate Stitchwork**, **Threads Entwined**, **Knitted Tapestry**, **Quilted Patchwork**, and **Custom Carpet Tile**.



DELICATE STITCHWORK

Embroidery teaches us that beauty can be found in the details. It reminds us that even the smallest of stitches can have a huge impact. The intricate details of Delicate Stitchwork draw attention with an elegant tactility that contrasts beautifully in otherwise sleek environments.

The stitched lines loop across the surface creating texture and an underlying structure to patterns that fuse cultural influences from across the world's rich textile traditions.



CF86162

Pattern Repeat 12 ft x 16 ft | 3.66 m x 4.88 m



A

6116



B

BQ818



C

CO403



D

6175



E

5500D



F

CJ324



CF86199

Pattern Repeat 12 ft x 16 ft | 3.66 m x 4.88 m



6116



BQ818



5500D



CJ324

CF86196

Pattern Repeat 12 ft x 16 ft | 3.66 m x 4.88 m



6116



BQ818



CO403



6175



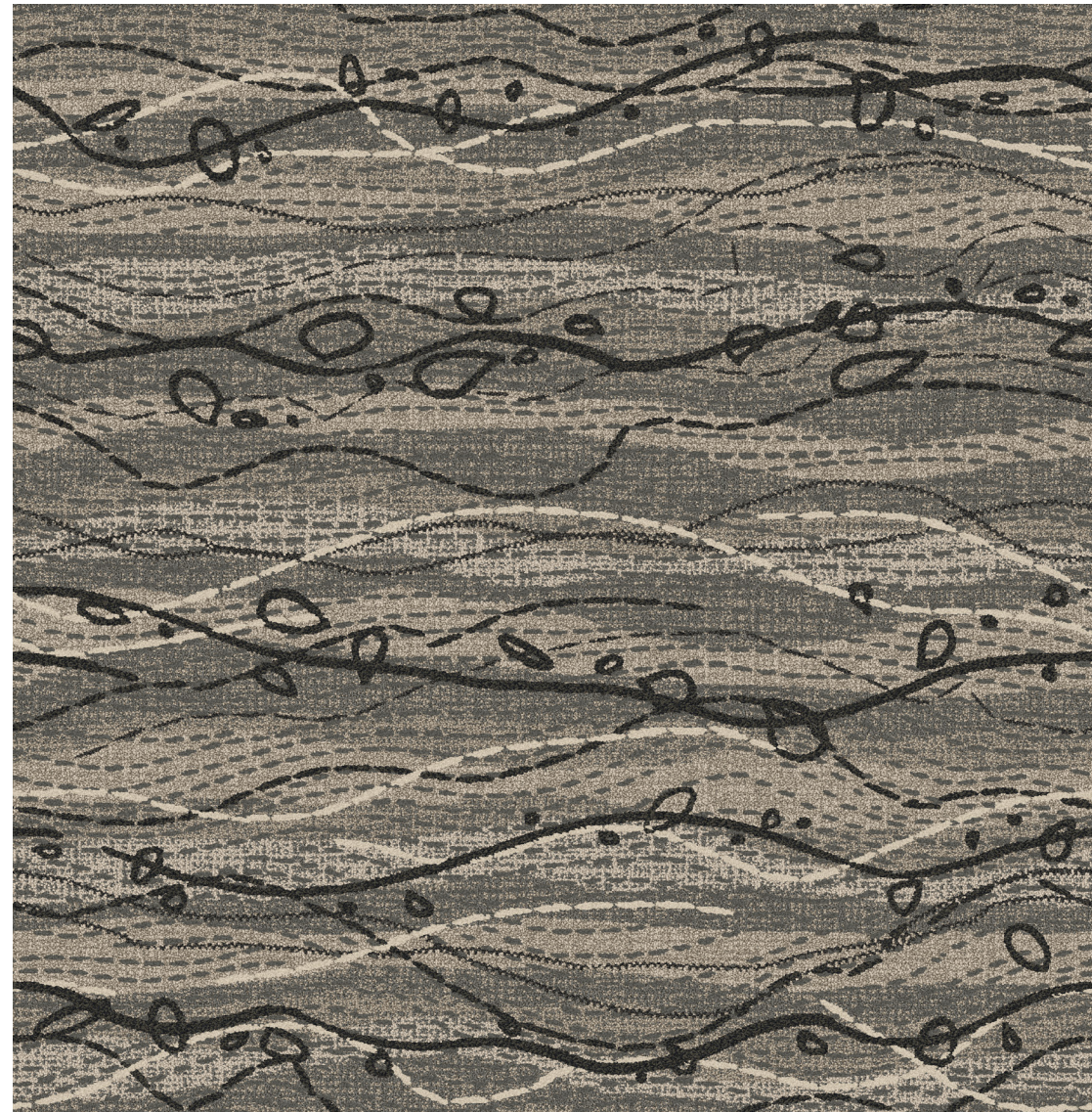
5500D



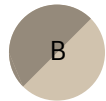
CJ324

CF86117

Pattern Repeat 6 ft x 6 ft 1.3 in | 1.83 m x 1.87 m



6116



BQ818



5500D



CJ324



CF86115

Pattern Repeat 4 ft x 6 ft 1.3 in | 1.22 m x 1.87 m



6116



BQ818



5500D



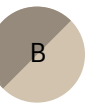
CJ324

CF86114

Pattern Repeat 6 ft x 6 ft 1.3 in | 1.83 m x 1.87 m



6116



BQ818



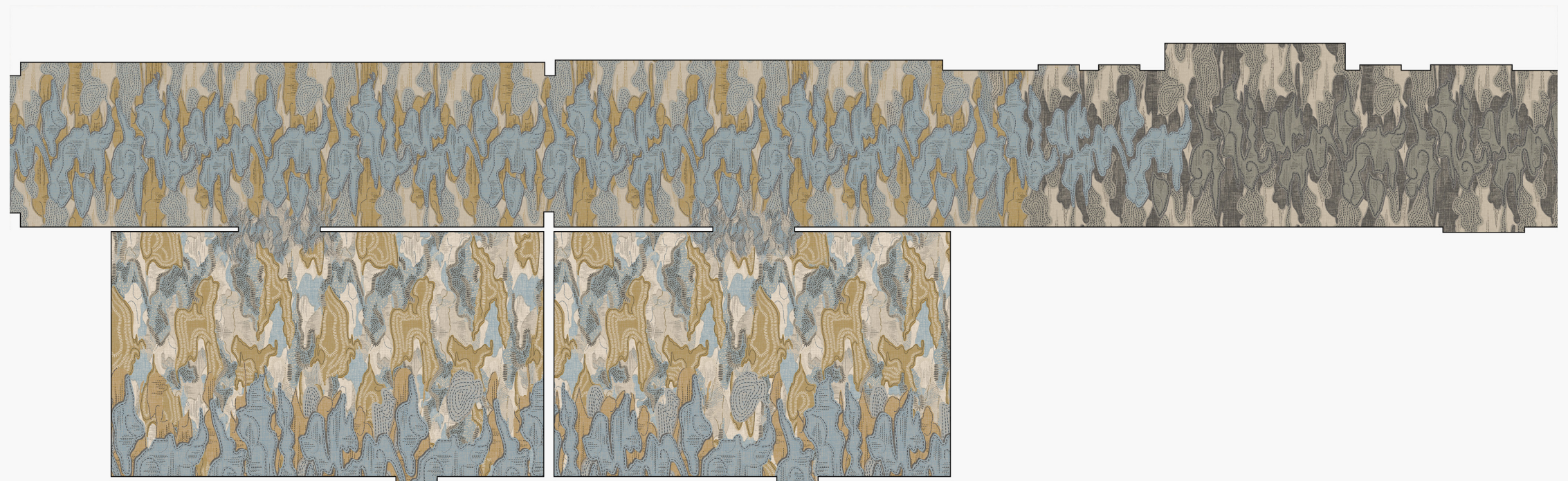
5500D



CJ324

"YOU CAN'T USE UP
CREATIVITY. THE MORE
YOU USE, THE MORE
YOU HAVE."

- MAYA ANGELOU



CF86196
CUSTOM COLORPOINT BROADLOOM

CF86199
CUSTOM COLORPOINT BROADLOOM

CF86114
CUSTOM COLORPOINT BROADLOOM

CF86162
CUSTOM COLORPOINT BROADLOOM

* The floor plans shown are inspired by
Connected Threads patterns. These
renditions have been customized to
display the possibilities of the collection.

THREADS ENTWINED

Movement ebbs and flows across Threads Entwined; energizing moments of dense intersection are interspersed with graceful singular strands. Intertwining in surprising and rewarding ways, it rejects precision in favor of a free flowing sense of rhythm.

A visual meditation on the strength of our connections.





CN86120

Pattern Repeat 6 ft x 12 ft | 1.83 m x 3.66 m



6116



BQ818



5500D



CJ324

CF86119

Pattern Repeat 12 ft x 16 ft | 3.66 m x 4.88 m



6116



BQ818



5500D



CJ324

CF86122

Pattern Repeat 6 ft x 6 ft 1.3 in | 1.83 m x 1.87 m



6116



BQ818



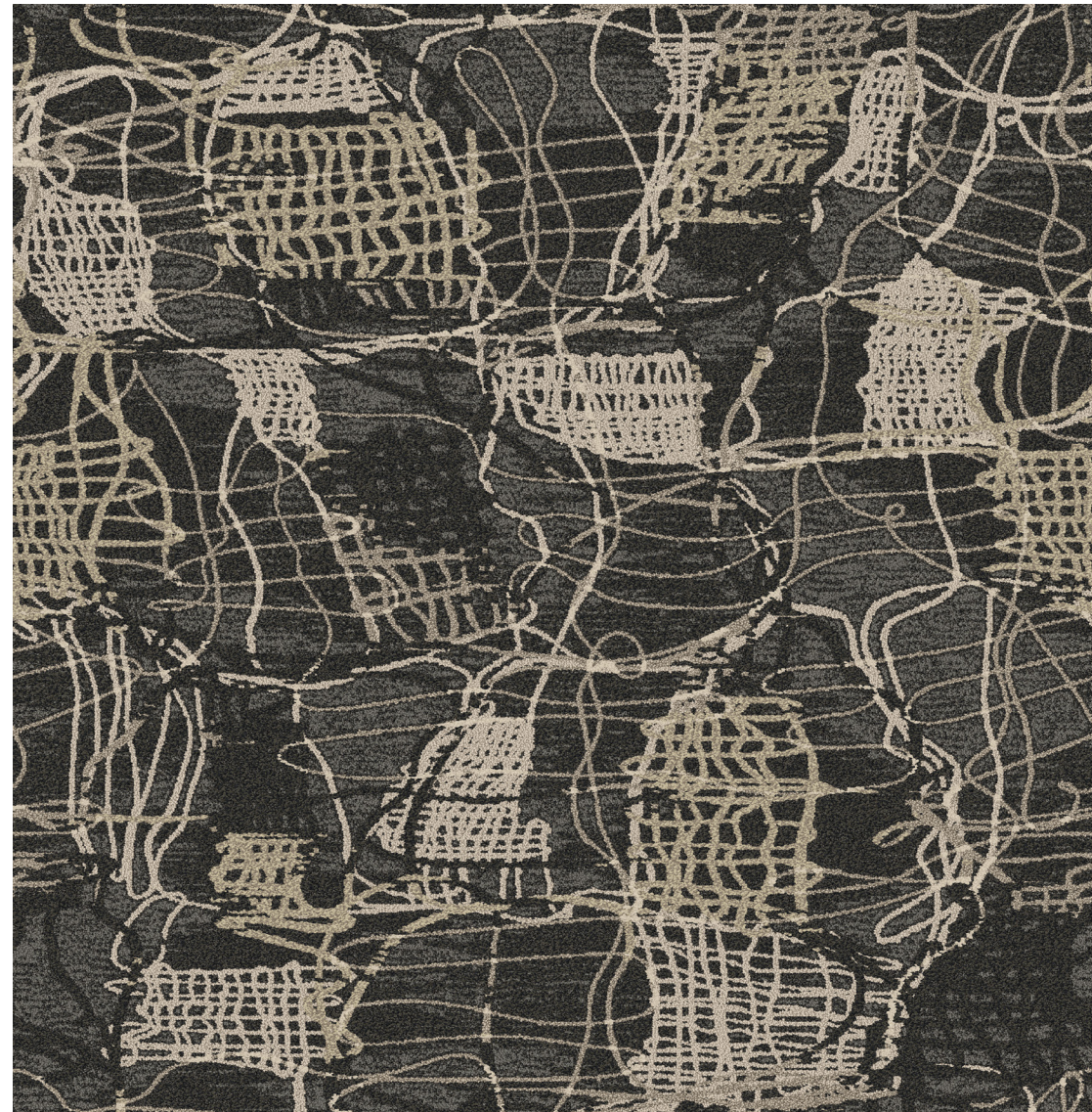
5500D



CJ324

CF86121

Pattern Repeat 6 ft x 6 ft 1.3 in | 1.83 m x 1.87 m



6116



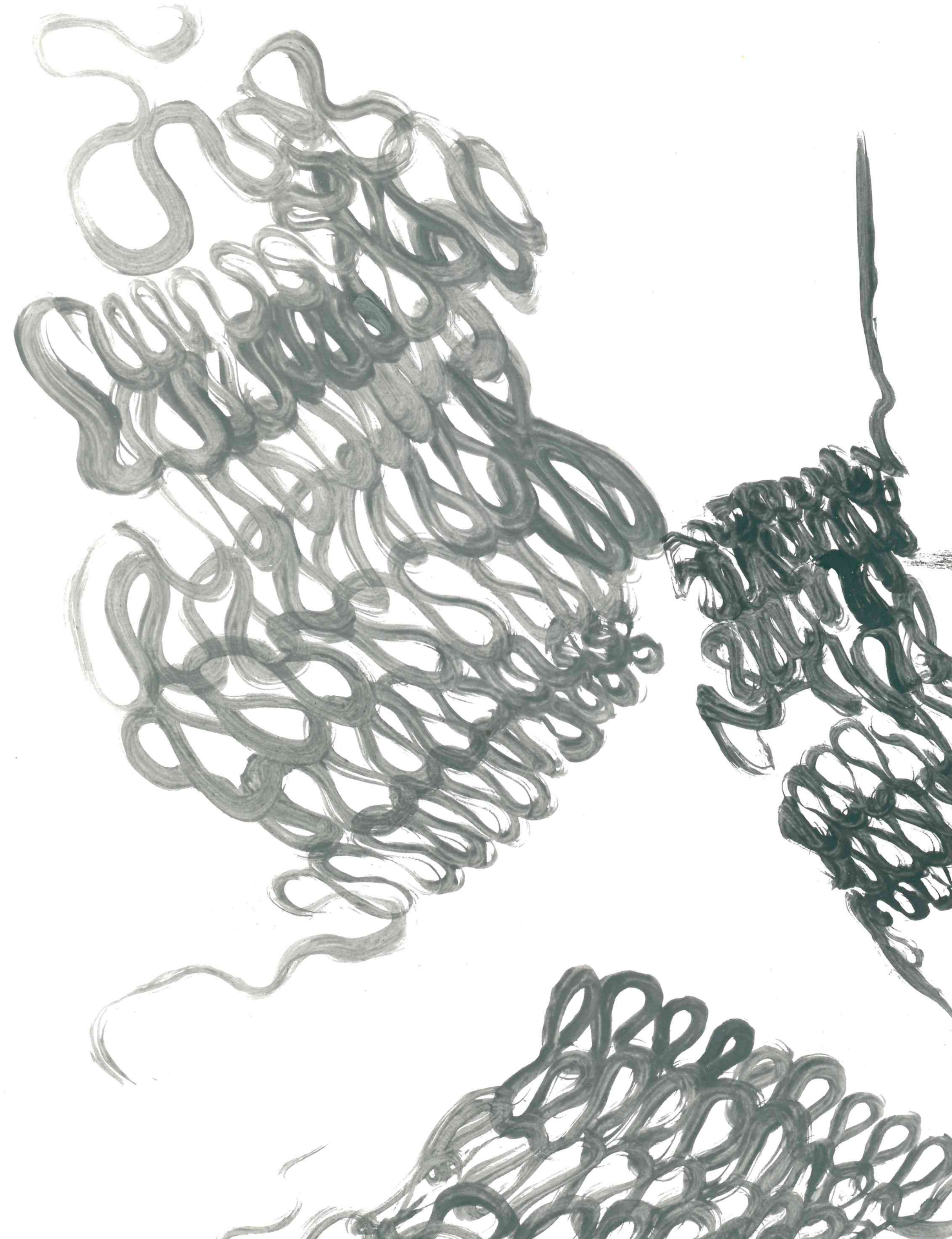
BQ818



5500D



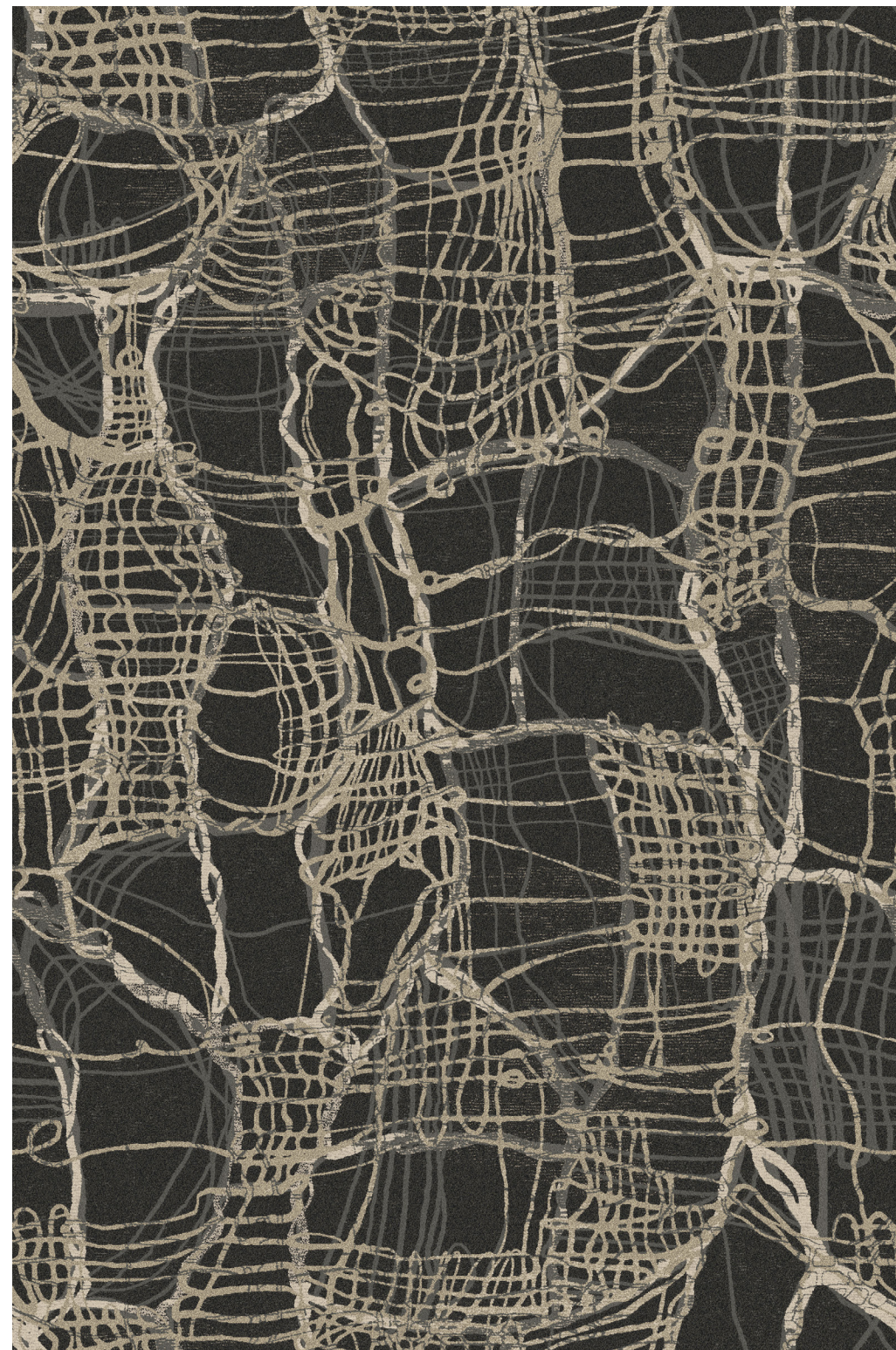
CJ324





CF86164

Pattern Repeat 12 ft x 18 ft 1.3 in | 3.66 m x 5.53 m



A

6116



B

BQ818



C

5500D



D

CJ324

"SEWING IS MY ATTEMPT
TO KEEP THINGS TOGETHER
AND MAKE THINGS WHOLE."

- LOUISE BOURGEOIS

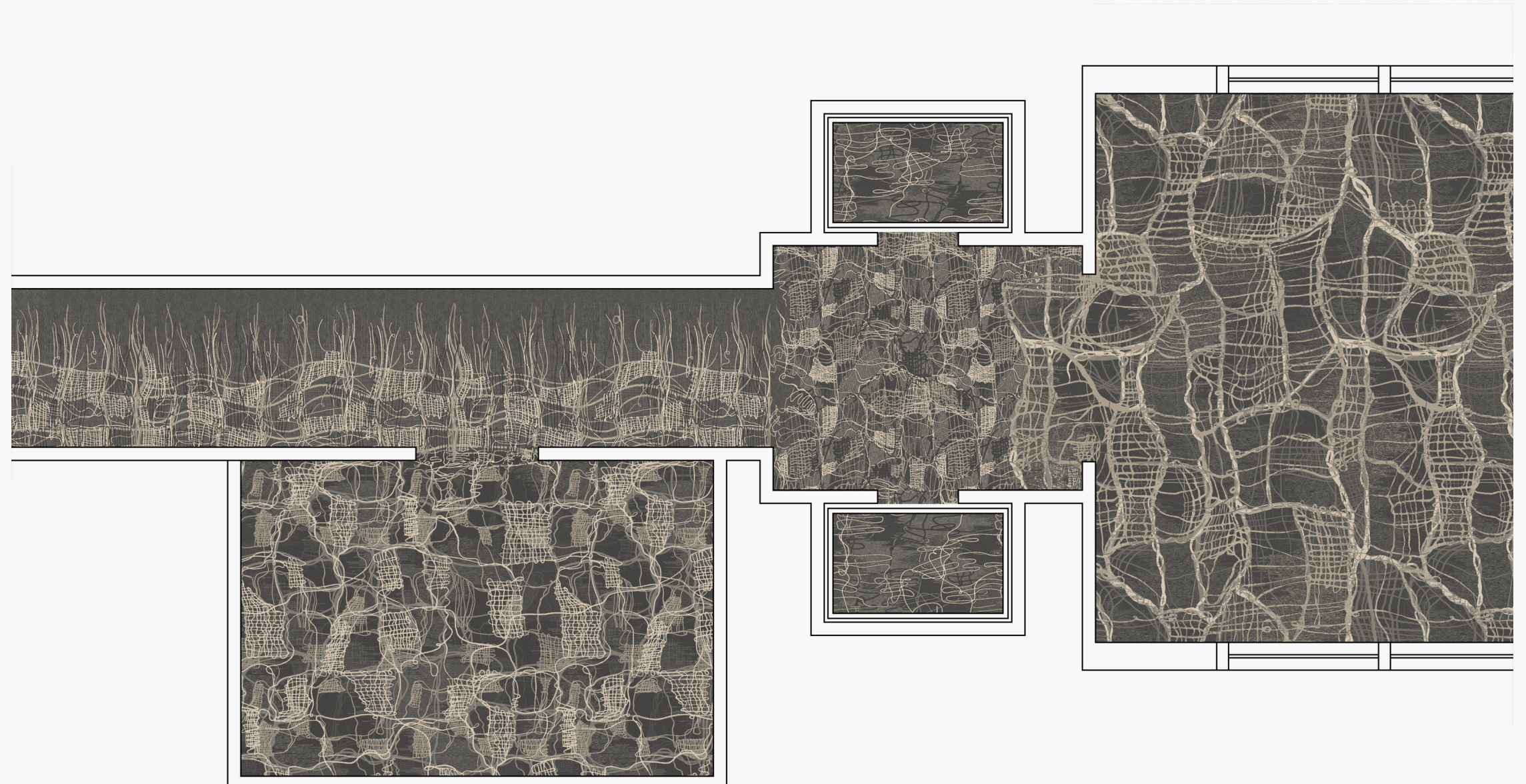
CN86120
CUSTOM COLORPOINT BROADLOOM

CF86119
CUSTOM COLORPOINT BROADLOOM

CF86121
CUSTOM COLORPOINT BROADLOOM

CF86122
CUSTOM COLORPOINT BROADLOOM

CF86164
CUSTOM COLORPOINT BROADLOOM



* The floor plans shown are inspired by
Connected Threads patterns. These
renditions have been customized to
display the possibilities of the collection.

KNITTED TAPESTRY

Like the threads in a tapestry, our lives are interconnected. Knitted Tapestry uses warm eclectic layers of texture and tone to create a rich visual narrative of subtle luxury and cozy comfort. Patterns that successfully walk the line between art and craft.



CN86131

Pattern Repeat 6 ft x 9 ft 2 in | 1.83 m x 2.80 m



6116



BQ818



CO403



6175



5500D



CJ324

CF86158

Pattern Repeat 12 ft x 16 ft | 3.66 m x 4.88 m



6116



BQ818



CO403



6175



5500D



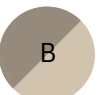
CJ324

CF86160

Pattern Repeat 12 ft x 16 ft | 3.66 m x 4.88 m



6116



BQ818



5500D



CJ324

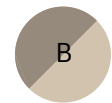
CN86132

Pattern Repeat 6 ft x 9 ft 1 in | 1.83 m x 2.76 m



A

6116



B

BQ818



C

5500D



D

CJ324

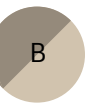
CF86159

Pattern Repeat 12 ft x 16 ft | 3.66 m x 4.88 m



A

6116



B

BQ818



C

5500D



D

CJ324

CF86135

Pattern Repeat 6 ft x 9 ft 2 in | 1.83 m x 2.80 m



6116



BQ818



CO403



6175



5500D



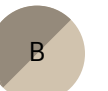
CJ324

CF86136

Pattern Repeat 6 ft x 9 ft 2 in | 1.83 m x 2.80 m



6116



BQ818



CO403



6175



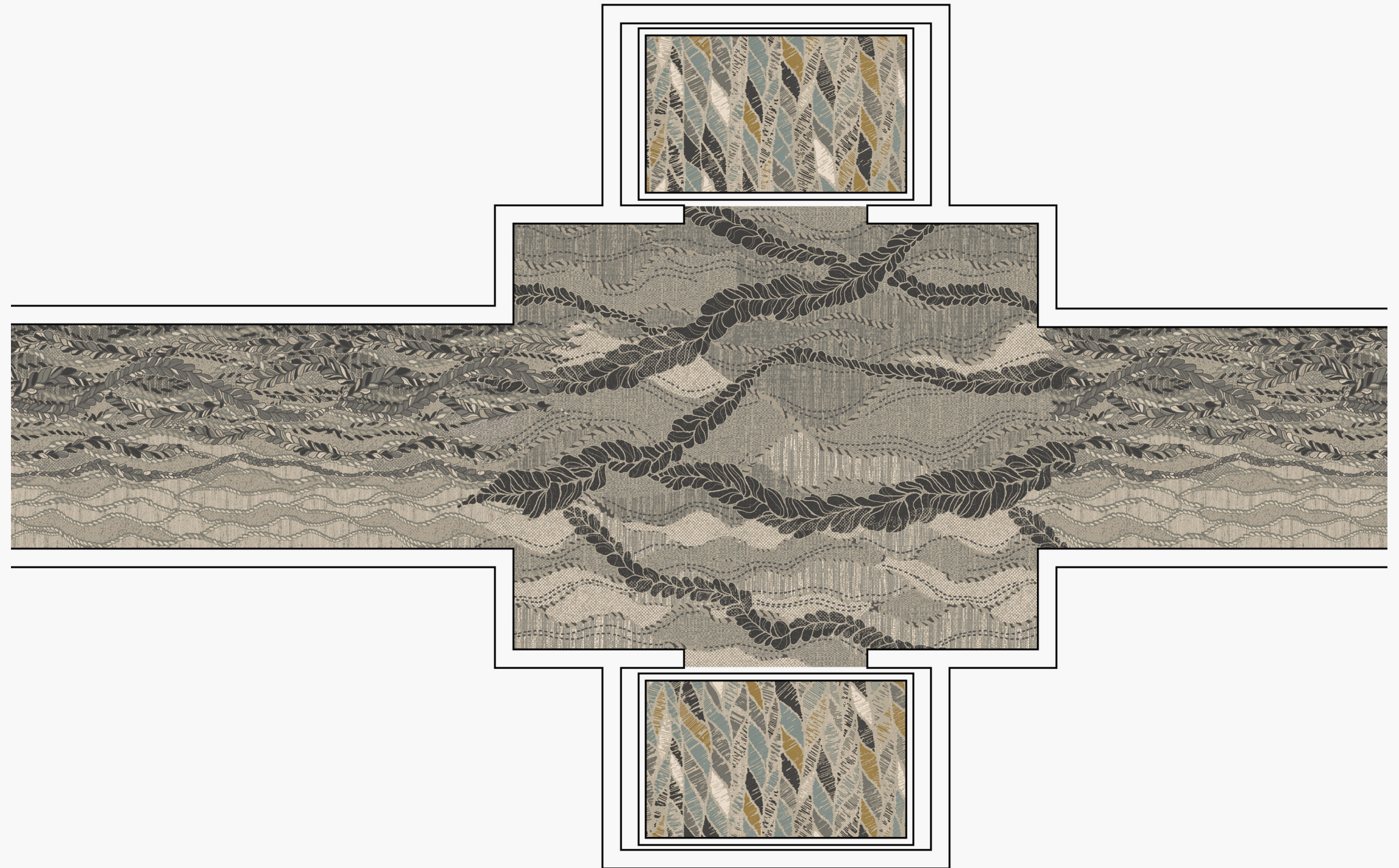
5500D



CJ324

"WE TOUCH THINGS TO ASSURE OURSELVES OF REALITY. WE TOUCH THE OBJECTS OF OUR LOVE, WE TOUCH THE THINGS WE FORM. OUR TACTILE EXPERIENCES ARE ELEMENTAL."

- ANNI ALBERS



CN86132
CUSTOM COLORPOINT BROADLOOM

CF86159
CUSTOM COLORPOINT BROADLOOM

CF86135
CUSTOM COLORPOINT BROADLOOM

* The floor plans shown are inspired by Connected Threads patterns. These renditions have been customized to display the possibilities of the collection.

QUILTED PATCHWORK

Patchwork blocks of color layered together with detailed stitchwork convey a sense of authenticity that soothes and reassures. The contemporary styling and geometric accents place the traditional in an entirely new domain, one that converts nostalgia into anticipation.



CR86123

Pattern Repeat 12 ft x 16 ft | 3.66 m x 4.88 m



6116



BQ818



CO403



6175



5500D



CJ324



CF86124

Pattern Repeat 6 ft x 9 ft 2 in | 1.83 m x 2.80 m

CF86126

Pattern Repeat 6 ft x 6 ft 1.3 in | 1.83 m x 1.87 m



6116



BQ818



CO403



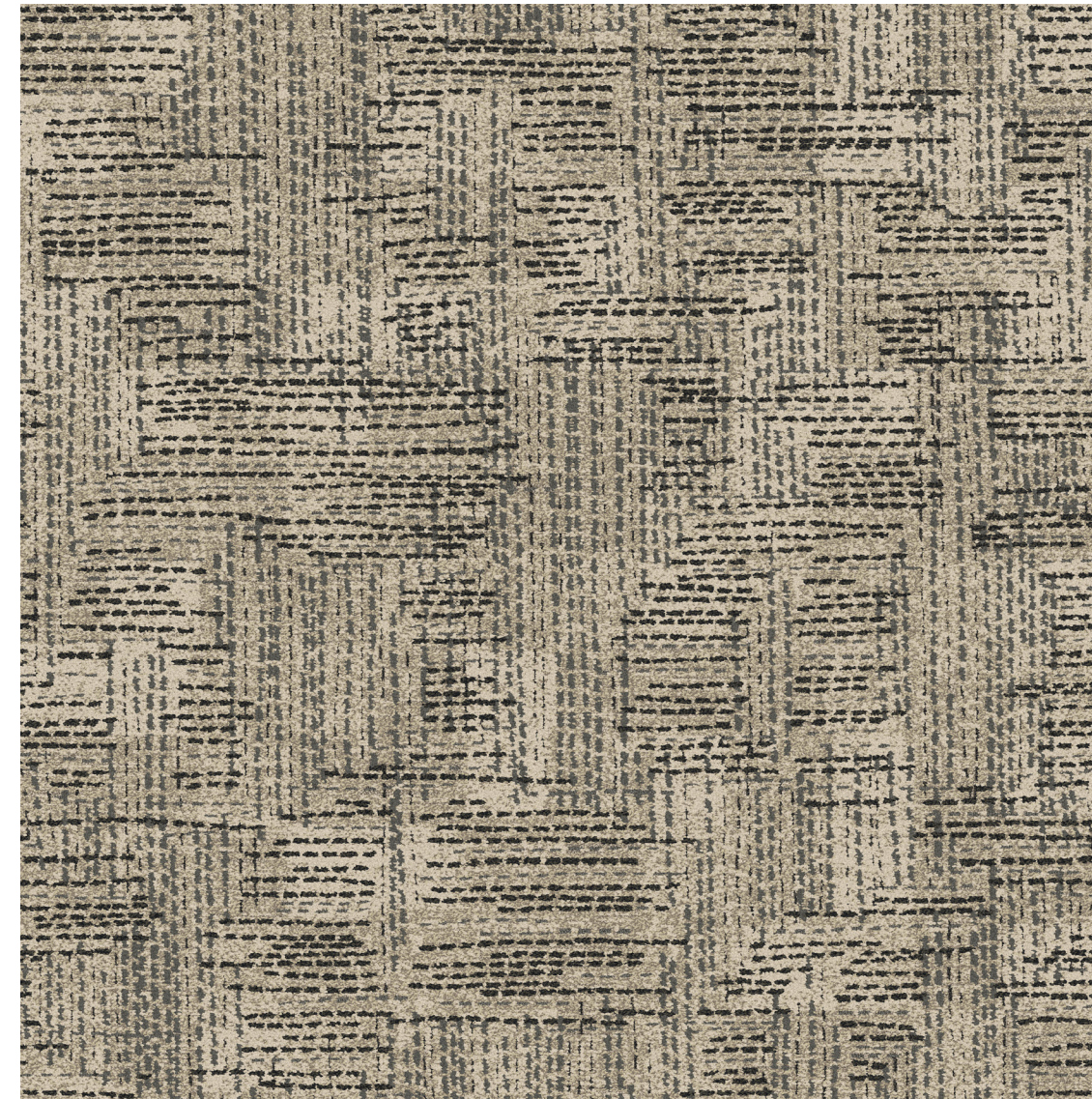
6175



5500D



CJ324



6116



BQ818



5500D



CJ324

Connected Threads

DELICATE STITCHWORK

THREADS ENTWINED

KNITTED TAPESTRY

QUILTED PATCHWORK

CUSTOM CARPET TILE



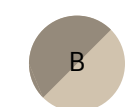
CF86127

Pattern Repeat 6 ft x 6 ft | 1.83 m x 1.83 m



A

6116



B

BQ818



C

CO403



D

6175



E

5500D



F

CJ324

CF86128

Pattern Repeat 6 ft x 6 ft 1.3 in | 1.83 m x 1.87 m

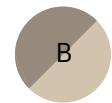
CF86125

Pattern Repeat 6 ft x 6 ft 1.3 in | 1.83 m x 1.87 m



A

6116



B

BQ818



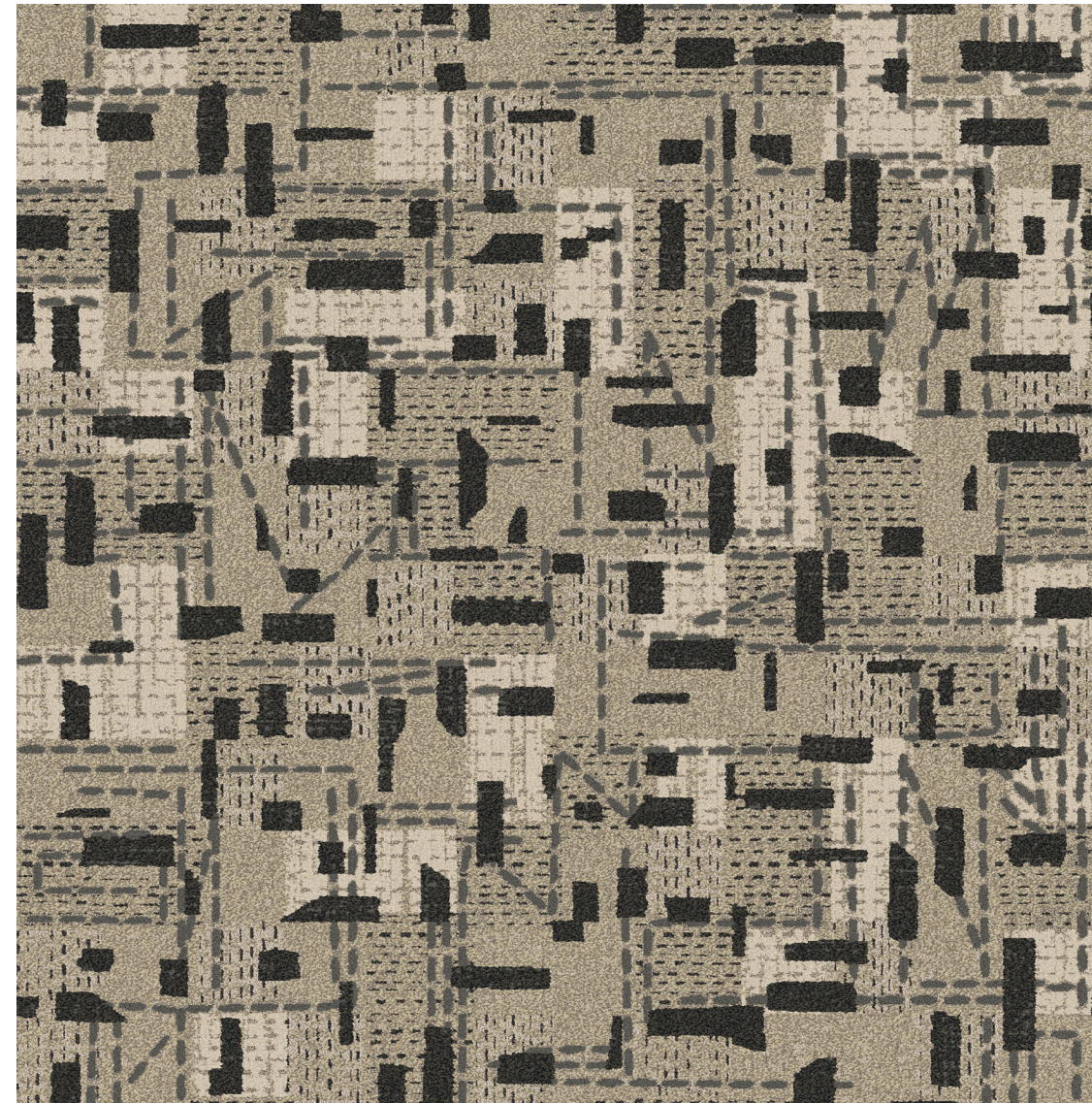
C

5500D



D

CJ324



A

6116



B

BQ818



C

5500D



D

CJ324

"WE STITCH TOGETHER
QUILTS OF MEANING TO
KEEP US WARM AND SAFE,
WITH WHATEVER PATCHES
OF BEAUTY AND UTILITY
WE HAVE ON HAND."

– ANNE LAMOTT

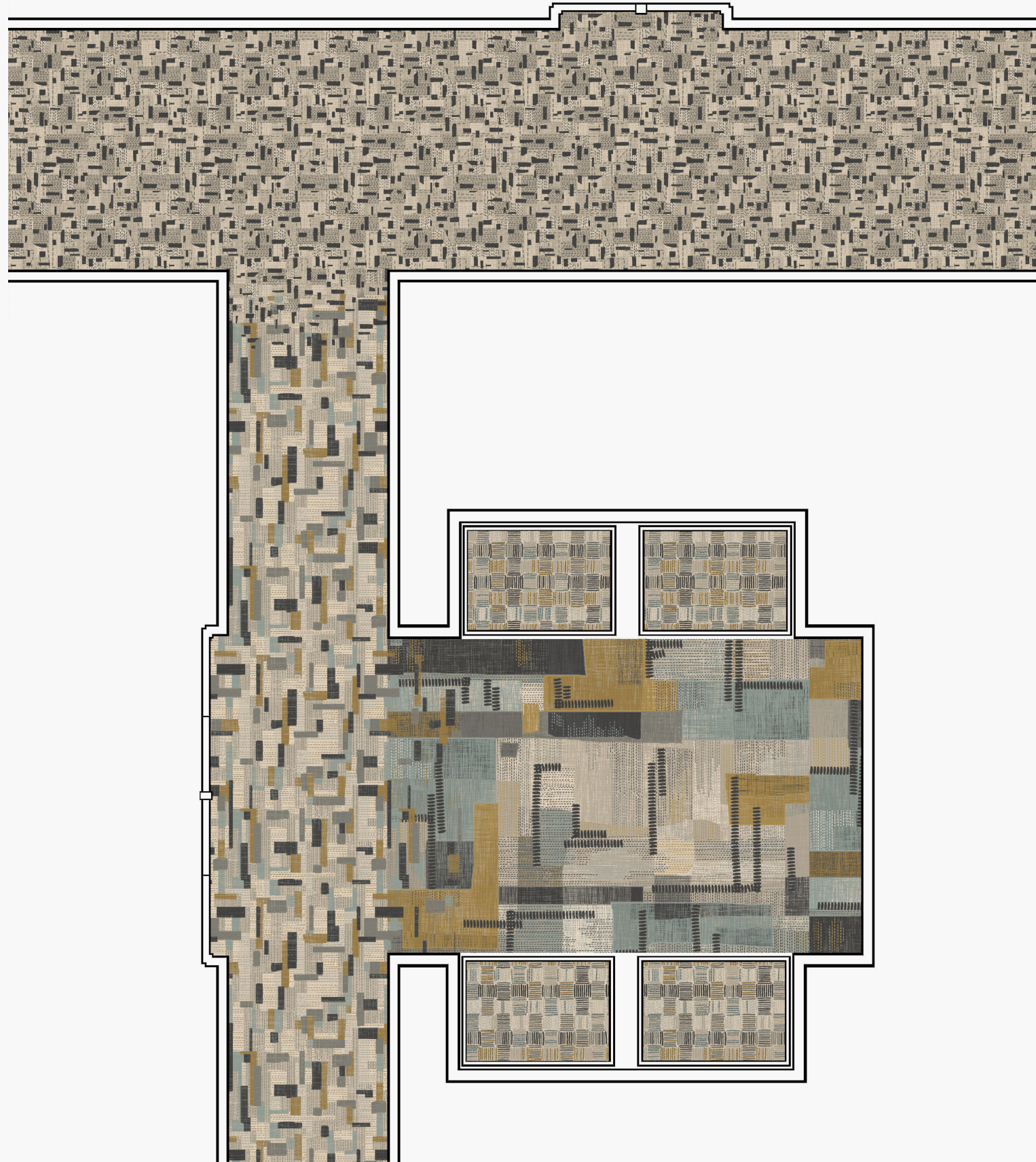
CF86125
CUSTOM COLORPOINT BROADLOOM

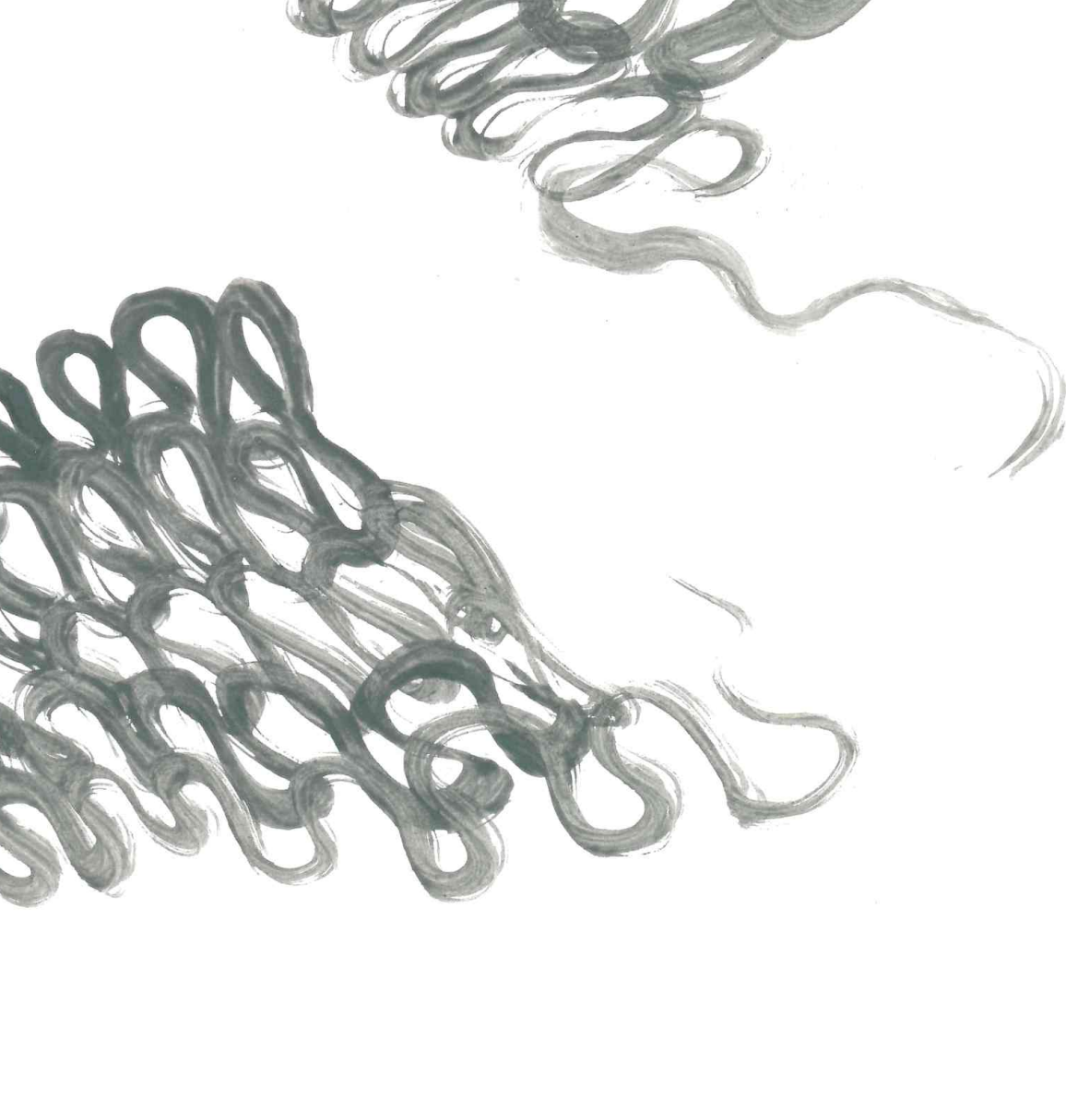
CF86124
CUSTOM COLORPOINT BROADLOOM

CR86123
CUSTOM COLORPOINT BROADLOOM

CF86127
CUSTOM COLORPOINT BROADLOOM

* The floor plans shown are inspired by
Connected Threads patterns. These
renditions have been customized to
display the possibilities of the collection.





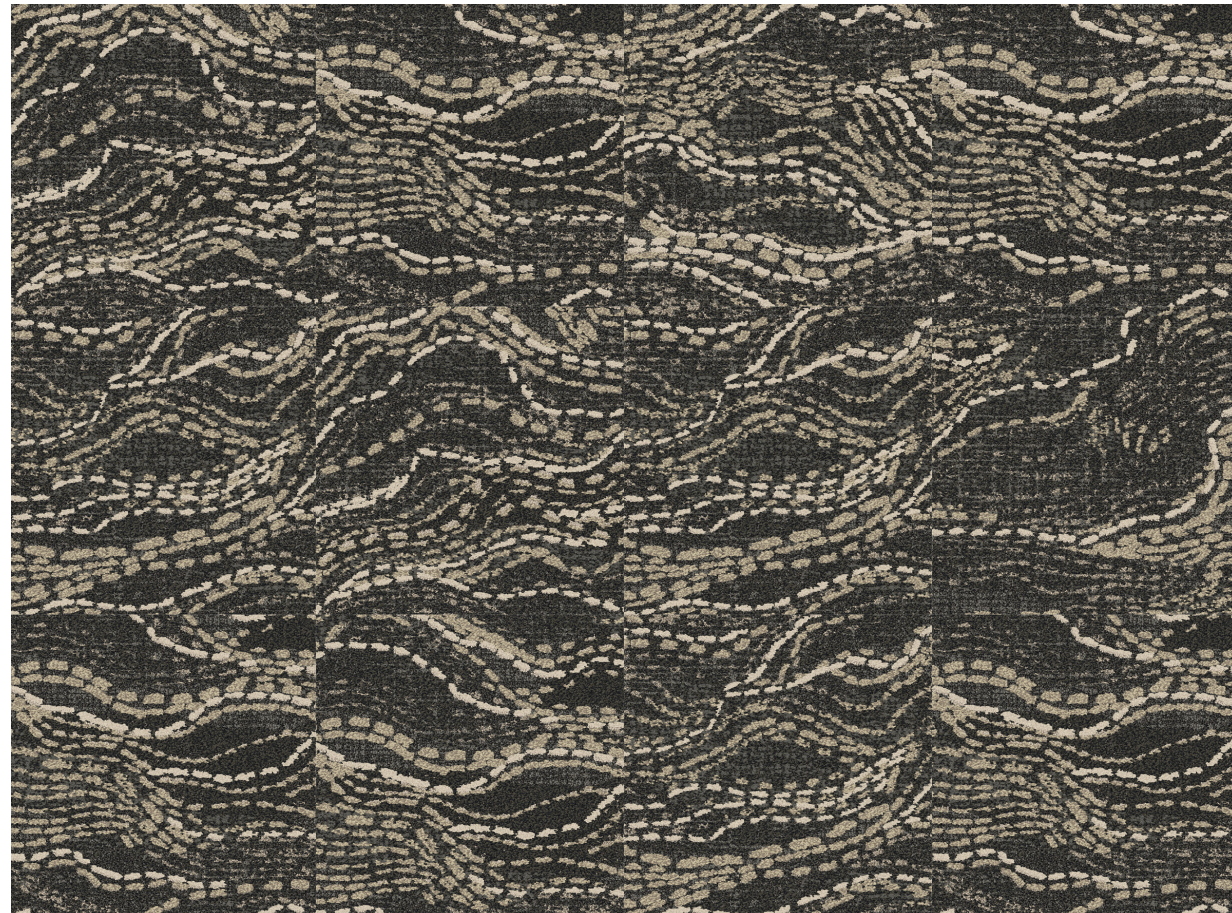
LOW EMBODIED CARBON | CARBON NEUTRAL TILE

Custom Carpet Tile

Connected Threads custom carpet tiles provide the perfect foundation for guest room experiences that demand comfort and style. The tiles can be easily installed next to 5mm LVT to create smooth, transition-free inset area rugs around a bed. They can also be laid wall-to-wall for seamless designs that offer less waste and more efficient installation than broadloom. An ideal solution for multi-use spaces that require different materials in close proximity.

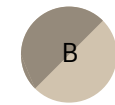
CT86267

24 x 24" Carpet Tile | Shown in Monolithic



A

6116



B

BQ818



C

5500D



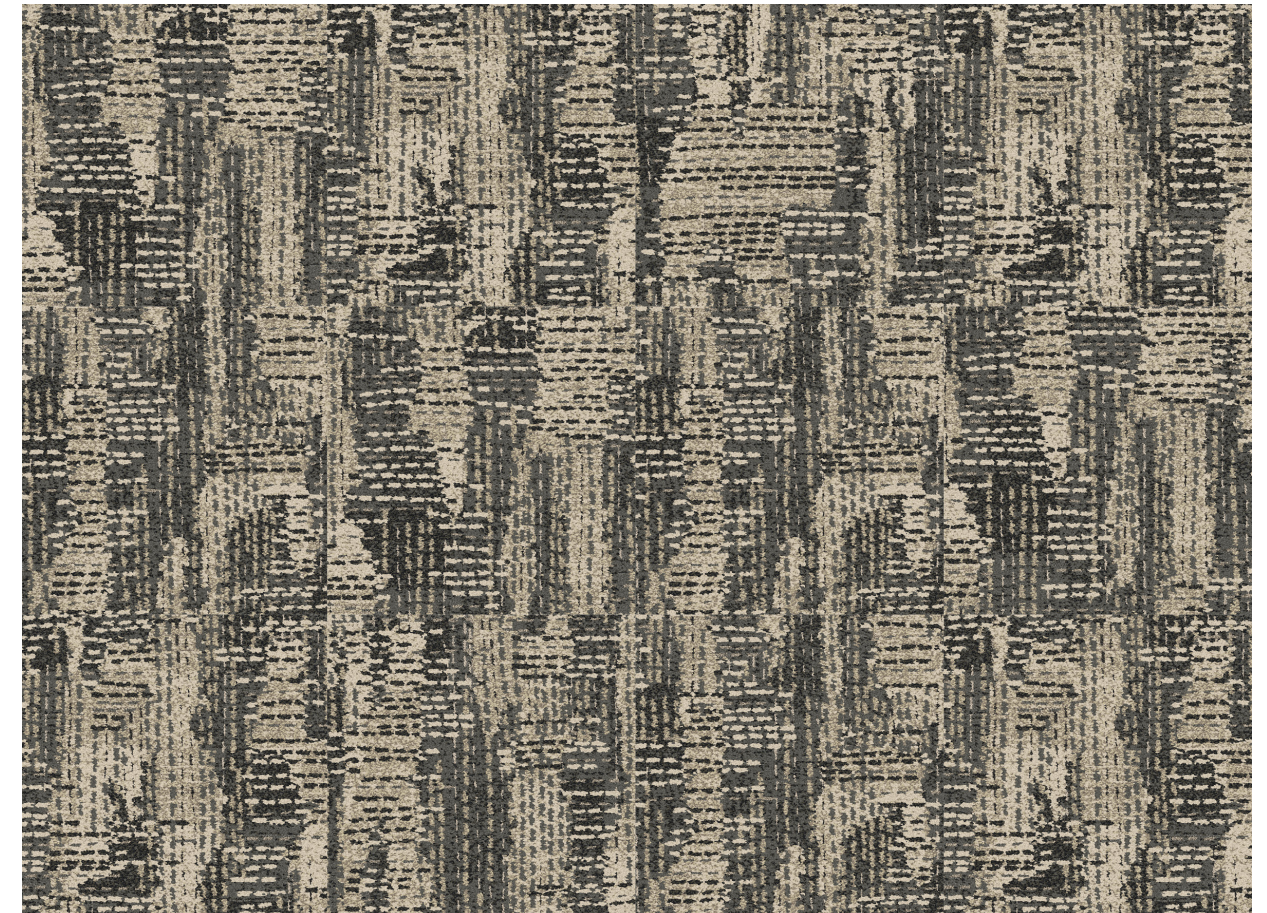
D

CJ324



CT86279

24 x 24" Carpet Tile | Shown in Monolithic



A

6116



B

BQ818



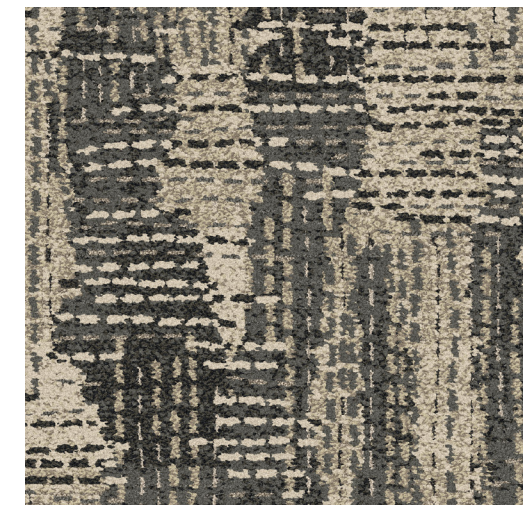
C

5500D



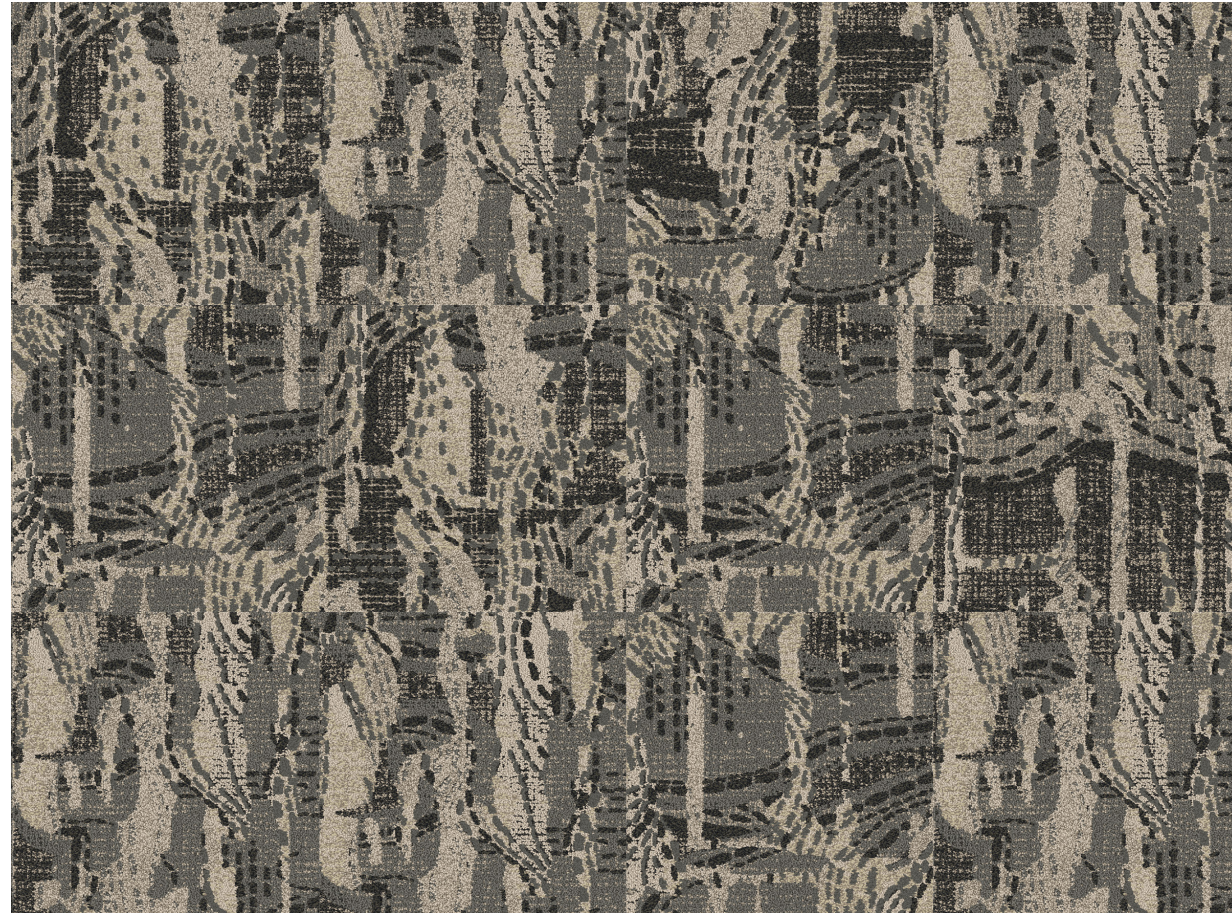
D

CJ324

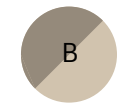


CT86268

24 x 24" Carpet Tile | Shown in Monolithic



6116



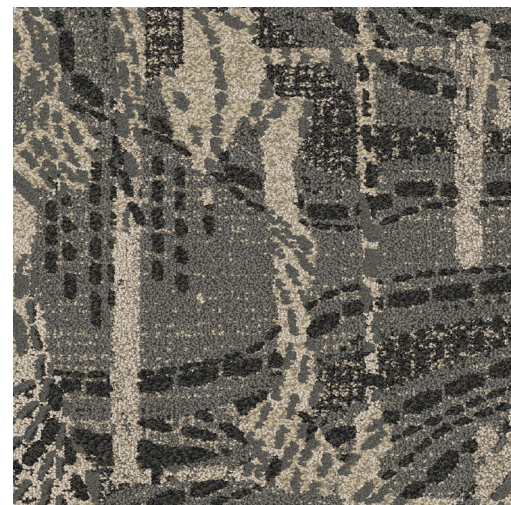
BQ818



5500D

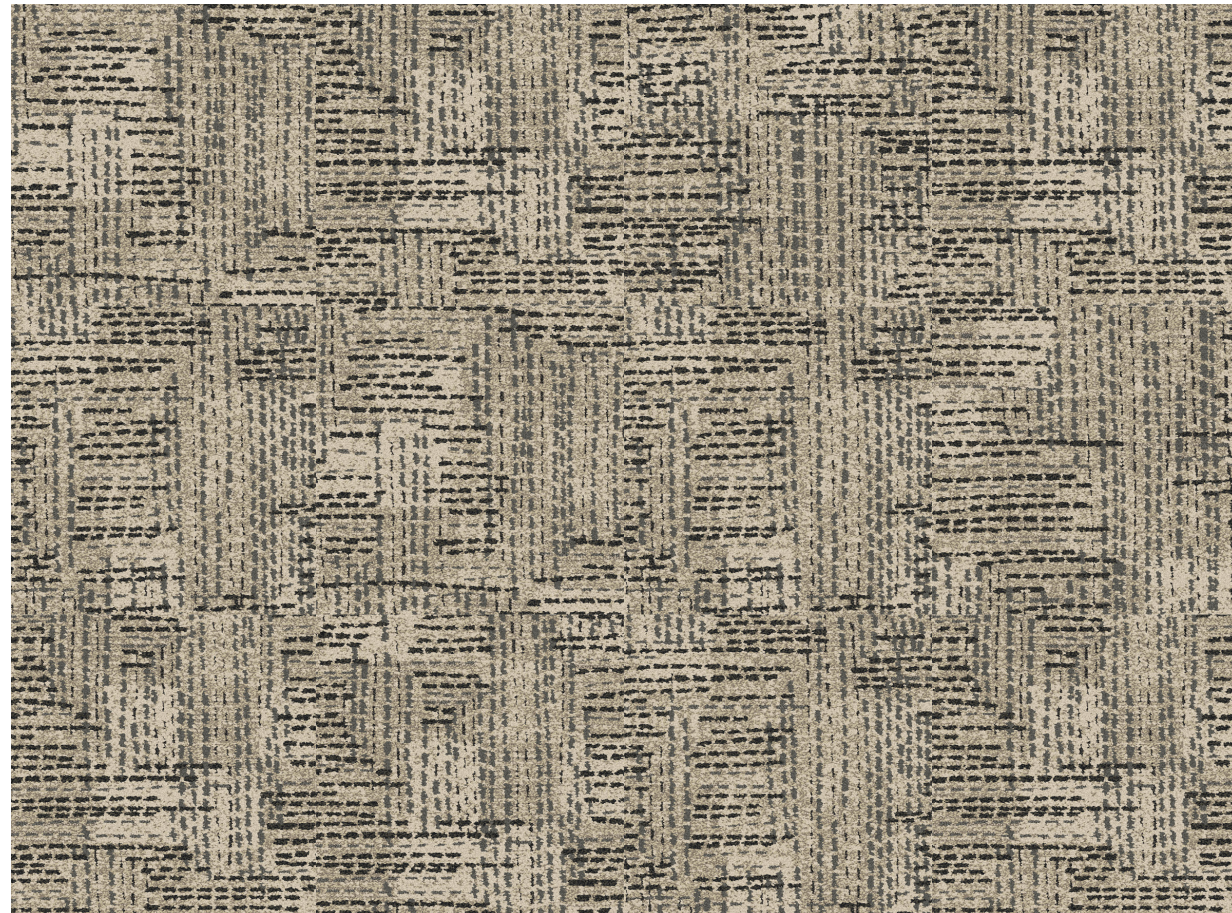


CJ324



CT86276

24 x 24" Carpet Tile | Shown in Monolithic



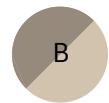
CT86272

24 x 24" Carpet Tile | Shown in Monolithic



A

6116



B

BQ818



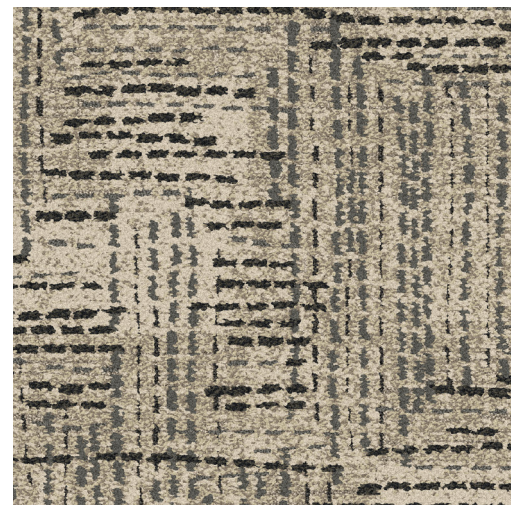
C

5500D



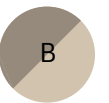
D

CJ324



A

6116



B

BQ818



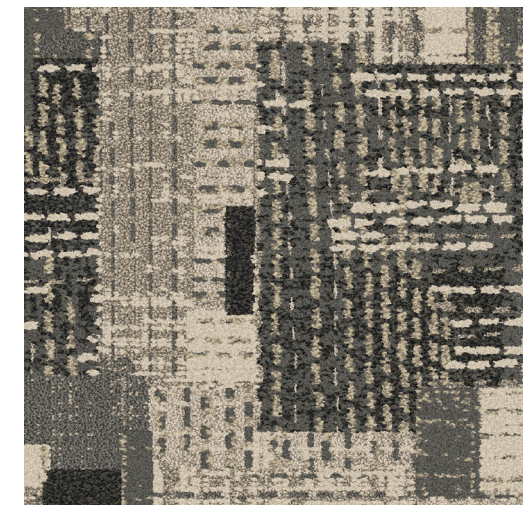
C

5500D



D

CJ324



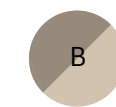


CT86269

24 x 24" Carpet Tile | Shown in Monolithic



6116



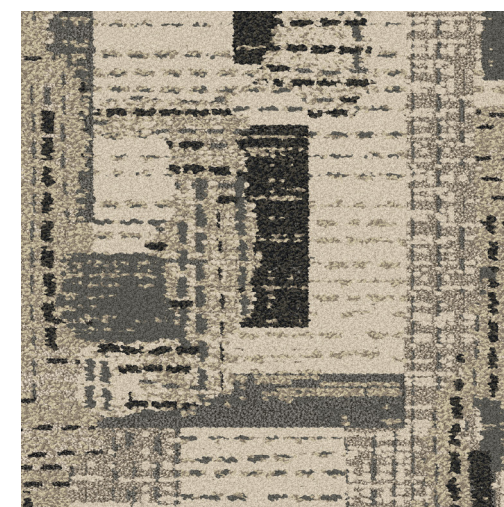
BQ818



5500D

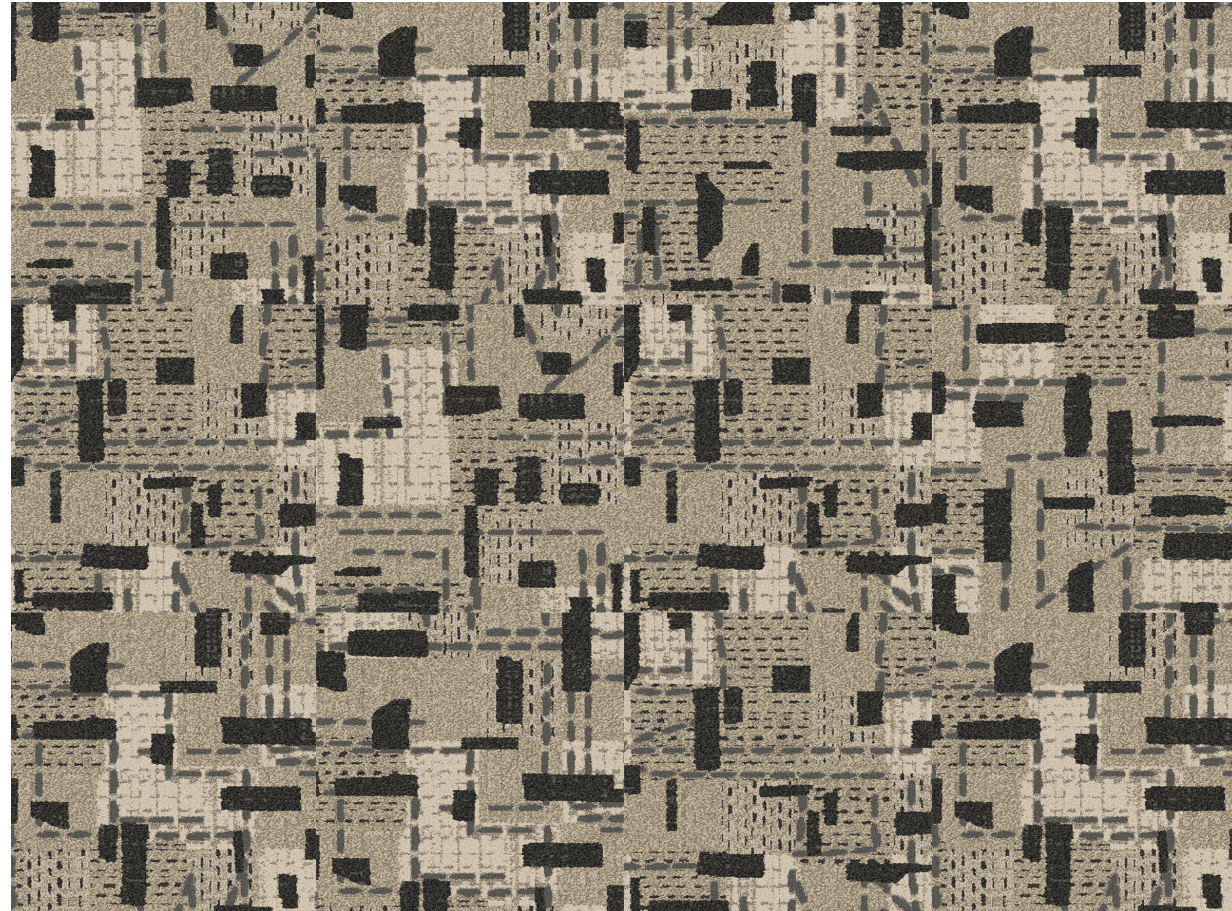


CJ324

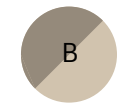


CT86274

24 x 24" Carpet Tile | Shown in Monolithic



6116



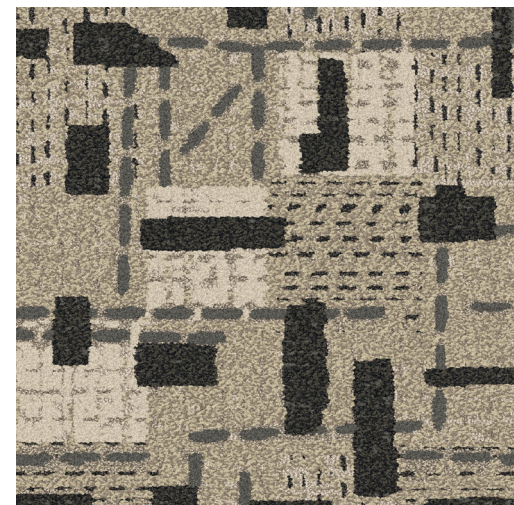
BQ818



5500D

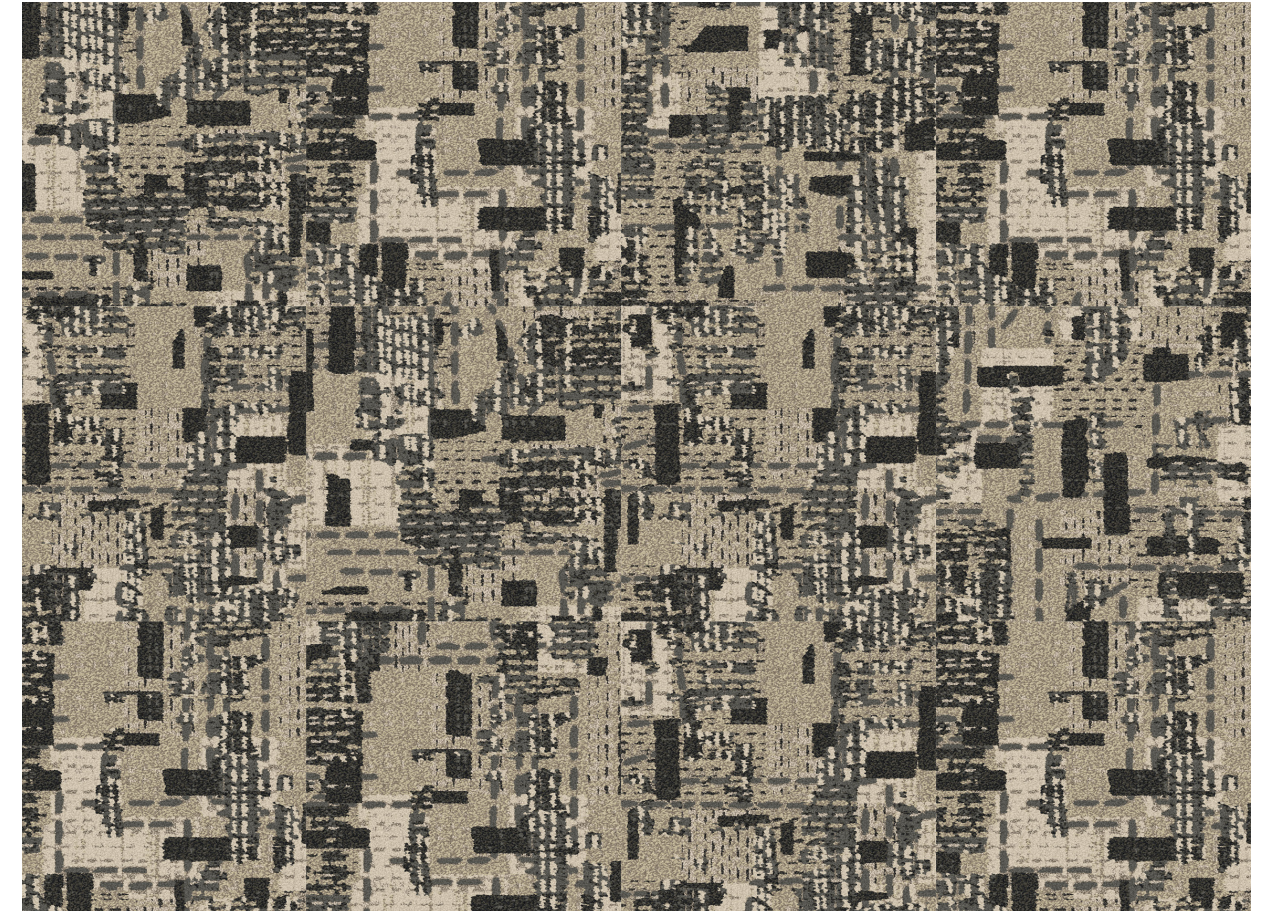


CJ324

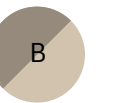


CT86277

24 x 24" Carpet Tile | Shown in Monolithic



6116



BQ818



5500D



CJ324



**“WE ALL ARE TAPESTRIES,
WOVEN OF THE WORLD.
WE ARE LIFELINES
INTERLACING, YARN OF
MANY SOURCES SWIRLED.”**

-KATEY HOWES



CT86269
CUSTOM CARPET TILE

CT86276
CUSTOM CARPET TILE

* The floor plans shown are inspired by Connected Threads patterns. These renditions have been customized to display the possibilities of the collection.

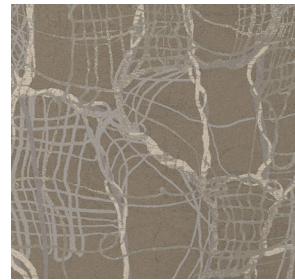
EXPLORE FOUNDRY

A Myriad of Choices—Designers can expand their vision of the Connected Threads collection by using our Foundry Custom Design Tool. Easily customize color and pattern to go beyond the collection portfolio and find inspiration in new patterns, selected to complement the styles of Connected Threads and expand the range of possibilities with non-standard products. Experiment with Foundry at foundry.shawhospitality.com

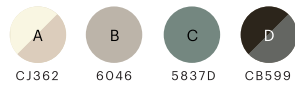
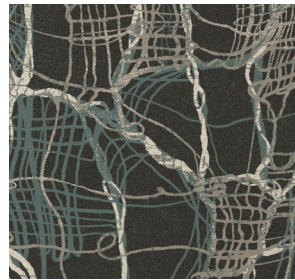
The patterns are designed in a variety of four and six colorpoint constructions that offer variation and flexibility in visuals and price points. The colorpoint construction creates textured carpets using varied pile height capabilities for full custom patterns of any length, creating effortless transitions from room to room.

4 COLORWAYS

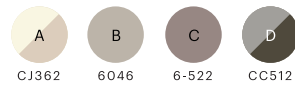
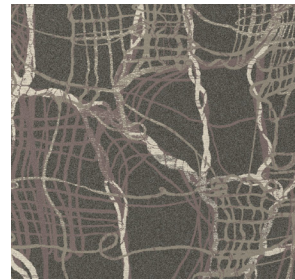
BUNDLED



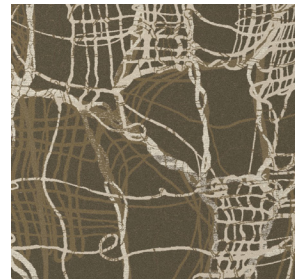
APTITUDE



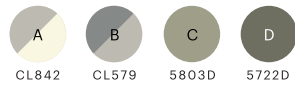
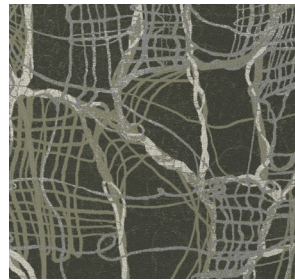
REVERIE



HERITAGE



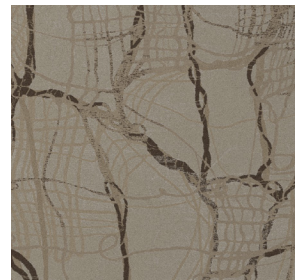
CLOAK



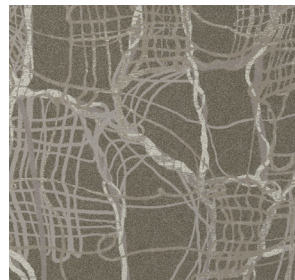
GENTLE



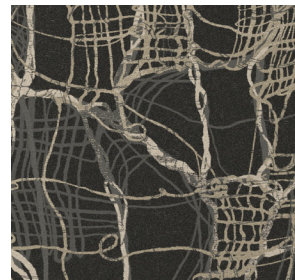
TRADITION



COCOON



CONNECTED

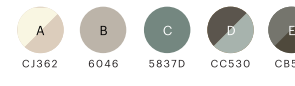


6 COLORWAYS

BUNDLED



APTITUDE



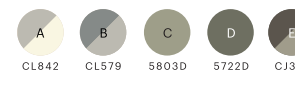
REVERIE



HERITAGE



CLOAK



GENTLE



TRADITION



COCOON



CONNECTED



Weaving a New Story

HOW TO FINGER KNIT

STEP 1: Hold the yarn between the thumb and index finger of your non-dominant hand, leaving a short length of extra yarn (the "tail") at the end.

STEP 2: Weave it over your index finger, under your middle finger, over your ring finger, and around your pinky finger.

STEP 3: Repeat this sequence back in the opposite direction. Wrap the yarn under your index finger, over your middle finger and under your index finger. Then repeat the original wrapping pattern one more time, until there are two wrappings on each of those four fingers.

STEP 4: From the top of your hand, starting with your index finger, take the top loop of yarn and pull it down, over (the bottom loop), and off of your finger. Once finished, the bottom loop should now be on the inside of your index finger, repeat with next 3 fingers.

STEP 5: Repeat the original wrapping pattern again, until there are two wrappings on each of those four fingers. Repeat STEP 4 and STEP 5 until your knitting has reached your desired length.



At the heart of Shaw Contract, we create products and solutions that positively impact people and the planet.

We are Design Optimists.



ShawContract[®]
hospitality

Material Health

We design and manufacture products to optimize human environments.



Cradle to Cradle Certified[®] Silver

Connected Threads styles are third-party verified as being safe, circular, and responsibly made.



Indoor Air Quality

People spend 90% of their time indoors, making these environments critical to our wellbeing. These products are Green Label Plus (GLP) Certified, meeting the California Department of Public Health (CDPH) indoor air quality standards for low-emitting products.



Product Transparency

Connected Threads styles have an HPD, which is a transparent disclosure of product content and associated health information.



LBC Red List Approved

Connected Threads styles are LBC Red List Approved. Proprietary ingredients are not disclosed on the Declare label, but all raw materials have been third-party confirmed as being compliant with the RED LIST of the Living Building Challenge.

Carbon Impact

We are a positive force in the global effort to collectively fight climate change.



50% Reduced Carbon Footprint

As a result of Shaw's investments to help reduce our energy and greenhouse gas impact, we have cut our Scope 1 & 2 emissions by more than half since our 2010 baseline.



Carbon Neutral

This collection of carpet tile is carbon neutral and is manufactured in a carbon neutral manufacturing location.



Low Embodied Carbon

Connected Threads styles have a third-party verified EPD.



EcoSolution Q100[™] Reduces Carbon

EcoSolution Q100[™] is a high-performance nylon fiber with 100% recycled content, optimized for low embodied carbon. Every square yard reduces the carbon impact by 42%, versus traditional carpet tile.

Circular Economy

We practice a regenerative, closed-loop approach to sustainability.

re[TURN][™] We Want it Back*

At the end of its useful life, we'll reclaim and recycle carpet to make more carpet products. Since 2006, Shaw has reclaimed and recycled nearly 1 billion pounds of post consumer carpet reducing landfill waste.

Diversity, Equity & Inclusion

We nurture an environment where every voice and perspective can be heard, with equal value placed on seen and unseen experiences.



Supplier Diversity Program

We promote supplier participation that is reflective of Shaw Industries' diverse customer base and local community. More than 42% of our spend* is with small and diverse businesses. We believe having a strong Supplier Diversity Program is strategic for bringing more innovation to our businesses and opening new markets for growth.

*Allowable spend is domestic (US) spend in categories in which we have diverse suppliers from which to choose.

Every thread in the tapestry of your life is worth weaving.

For more information about these attributes, contact
your local Shaw Contract account manager, visit us at
shawcontract.com or call 1.800.257.7429.



ShawContract®
hospitality